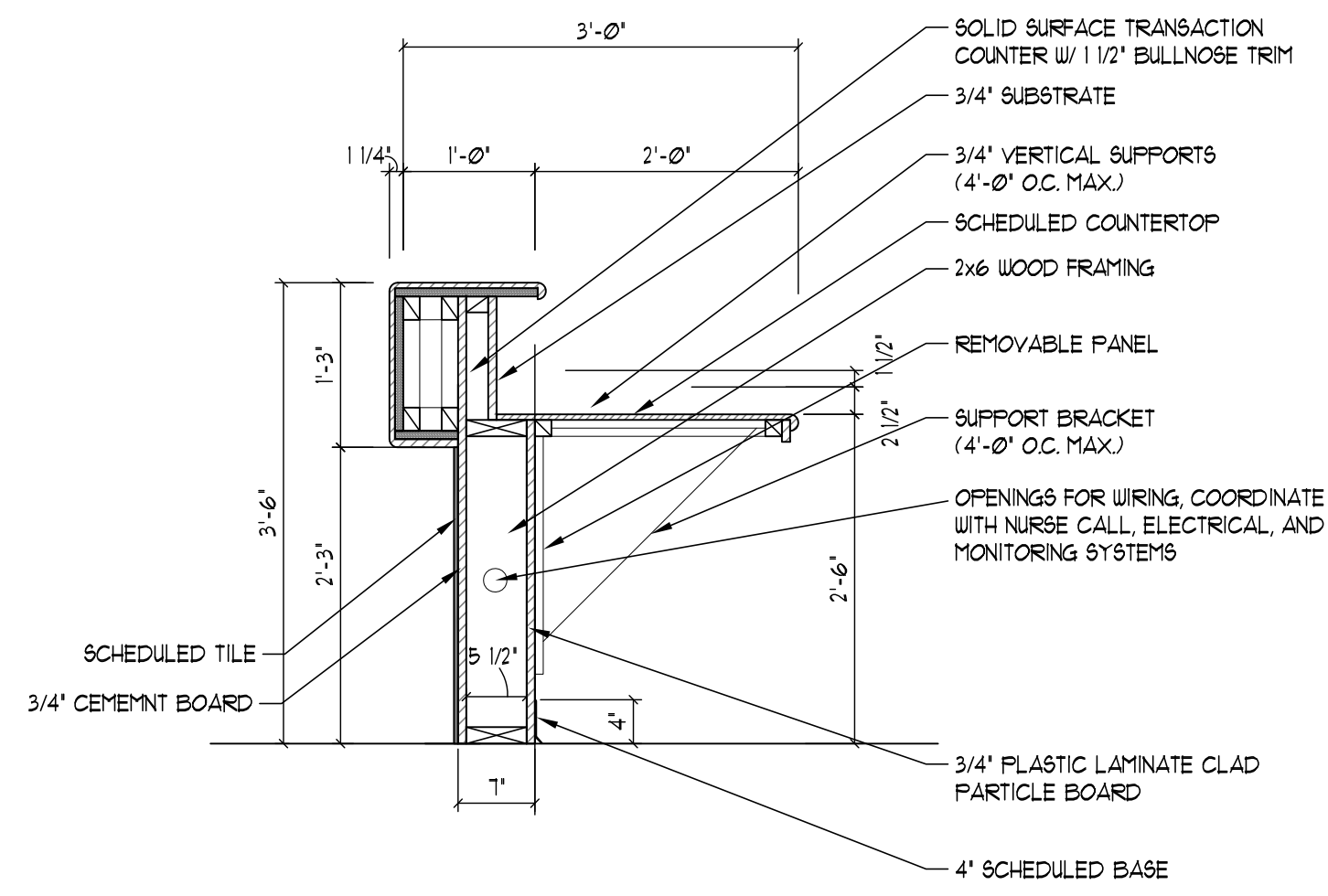
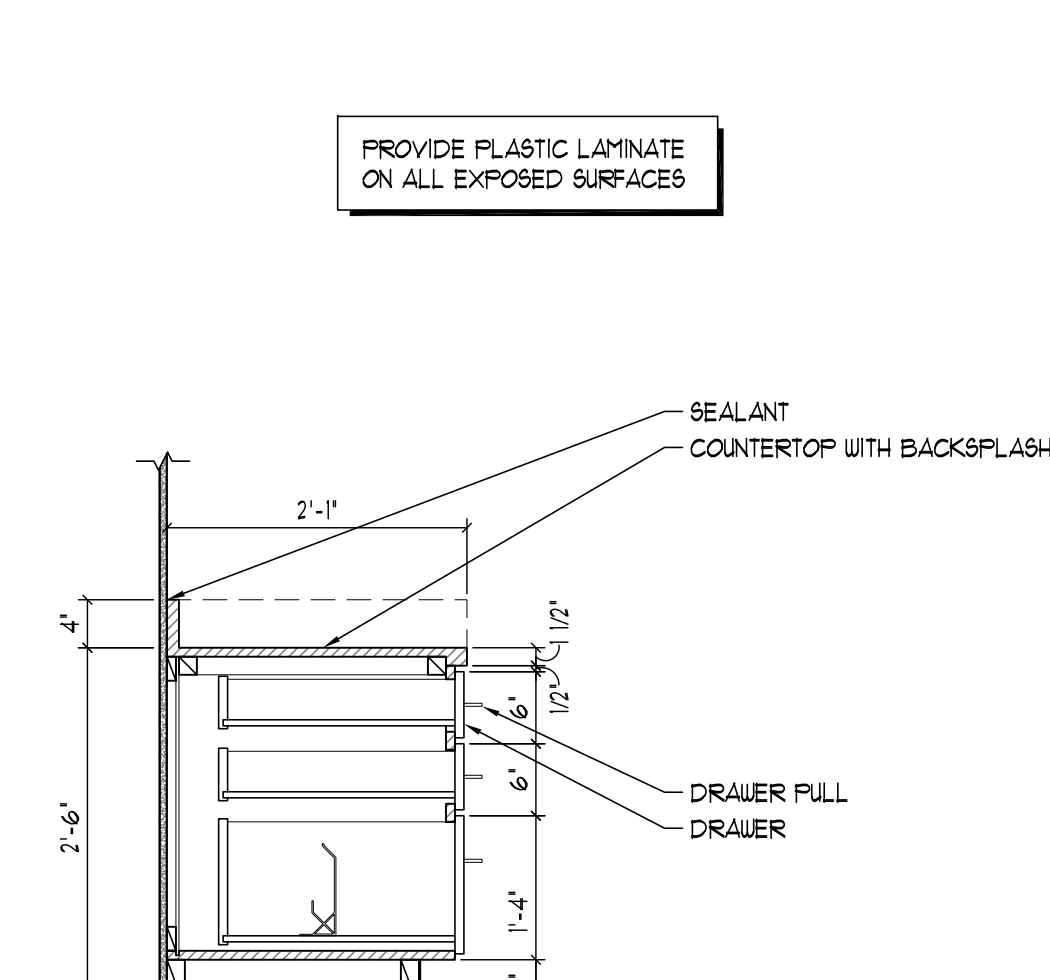


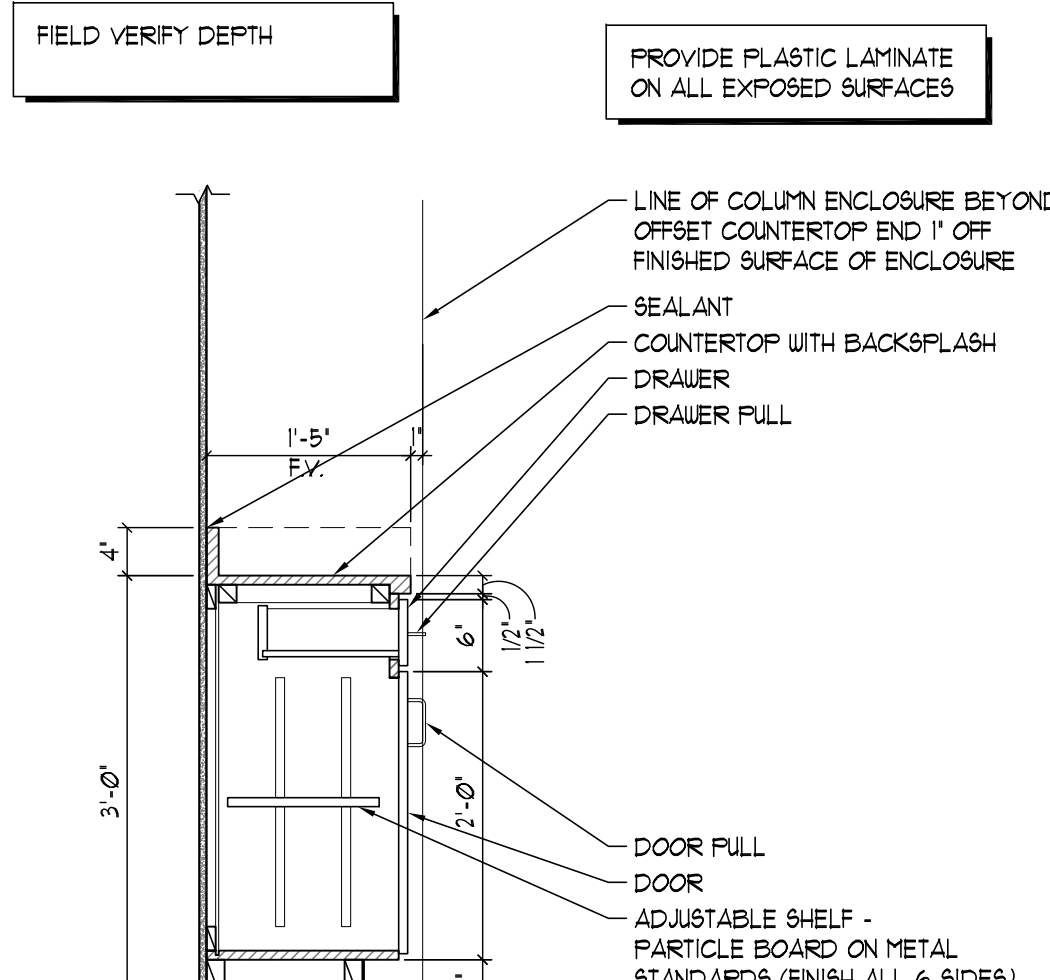
three eighths inch = one foot
one eighth inch = one foot
one quarter inch = one foot
three quarters inch = one foot
one half inch = one foot
one inch = one foot
one and one half inches = one foot
two inches = one foot
three inches = one foot
four inches = one foot
five inches = one foot
six inches = one foot
seven inches = one foot
eight inches = one foot
nine inches = one foot
ten inches = one foot
eleven inches = one foot
twelve inches = one foot
thirteen inches = one foot
fourteen inches = one foot
fifteen inches = one foot
sixteen inches = one foot
seventeen inches = one foot
eighteen inches = one foot
nineteen inches = one foot
twenty inches = one foot
twenty one inches = one foot
twenty two inches = one foot
twenty three inches = one foot
twenty four inches = one foot
twenty five inches = one foot
twenty six inches = one foot
twenty seven inches = one foot
twenty eight inches = one foot
twenty nine inches = one foot
thirty inches = one foot
thirty one inches = one foot
thirty two inches = one foot
thirty three inches = one foot
thirty four inches = one foot
thirty five inches = one foot
thirty six inches = one foot
thirty seven inches = one foot
thirty eight inches = one foot
thirty nine inches = one foot
forty inches = one foot
forty one inches = one foot
forty two inches = one foot
forty three inches = one foot
forty four inches = one foot
forty five inches = one foot
forty six inches = one foot
forty seven inches = one foot
forty eight inches = one foot
forty nine inches = one foot
fifty inches = one foot
fifty one inches = one foot
fifty two inches = one foot
fifty three inches = one foot
fifty four inches = one foot
fifty five inches = one foot
fifty six inches = one foot
fifty seven inches = one foot
fifty eight inches = one foot
fifty nine inches = one foot
sixty inches = one foot
sixty one inches = one foot
sixty two inches = one foot
sixty three inches = one foot
sixty four inches = one foot
sixty five inches = one foot
sixty six inches = one foot
sixty seven inches = one foot
sixty eight inches = one foot
sixty nine inches = one foot
seventy inches = one foot
seventy one inches = one foot
seventy two inches = one foot
seventy three inches = one foot
seventy four inches = one foot
seventy five inches = one foot
seventy six inches = one foot
seventy seven inches = one foot
seventy eight inches = one foot
seventy nine inches = one foot
eighty inches = one foot
eighty one inches = one foot
eighty two inches = one foot
eighty three inches = one foot
eighty four inches = one foot
eighty five inches = one foot
eighty six inches = one foot
eighty seven inches = one foot
eighty eight inches = one foot
eighty nine inches = one foot
ninety inches = one foot
ninety one inches = one foot
ninety two inches = one foot
ninety three inches = one foot
ninety four inches = one foot
ninety five inches = one foot
ninety six inches = one foot
ninety seven inches = one foot
ninety eight inches = one foot
ninety nine inches = one foot
one hundred inches = one foot



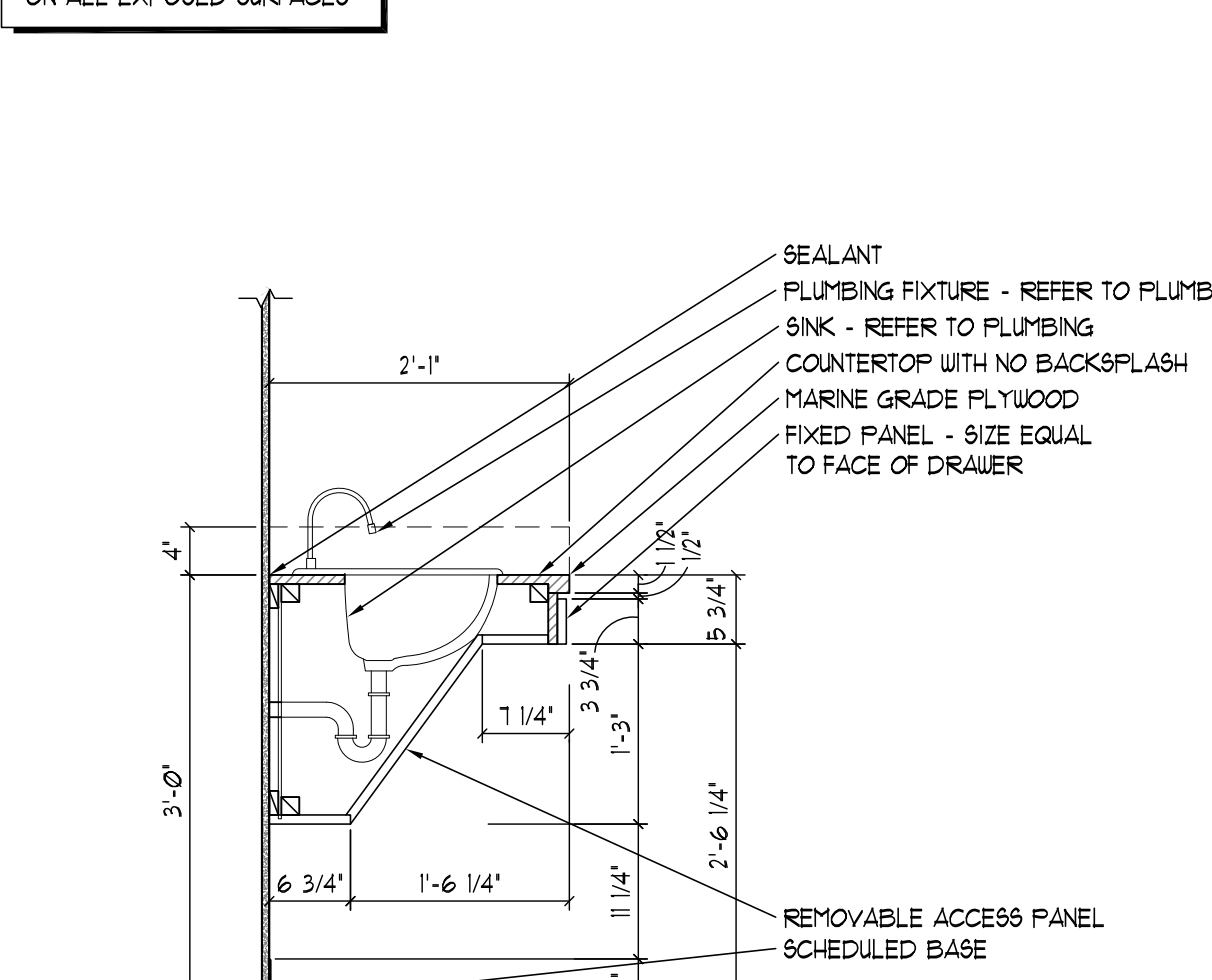
30 HIGH RECEPTION COUNTERTOP
SCALE: 3/4" = 1'-0"



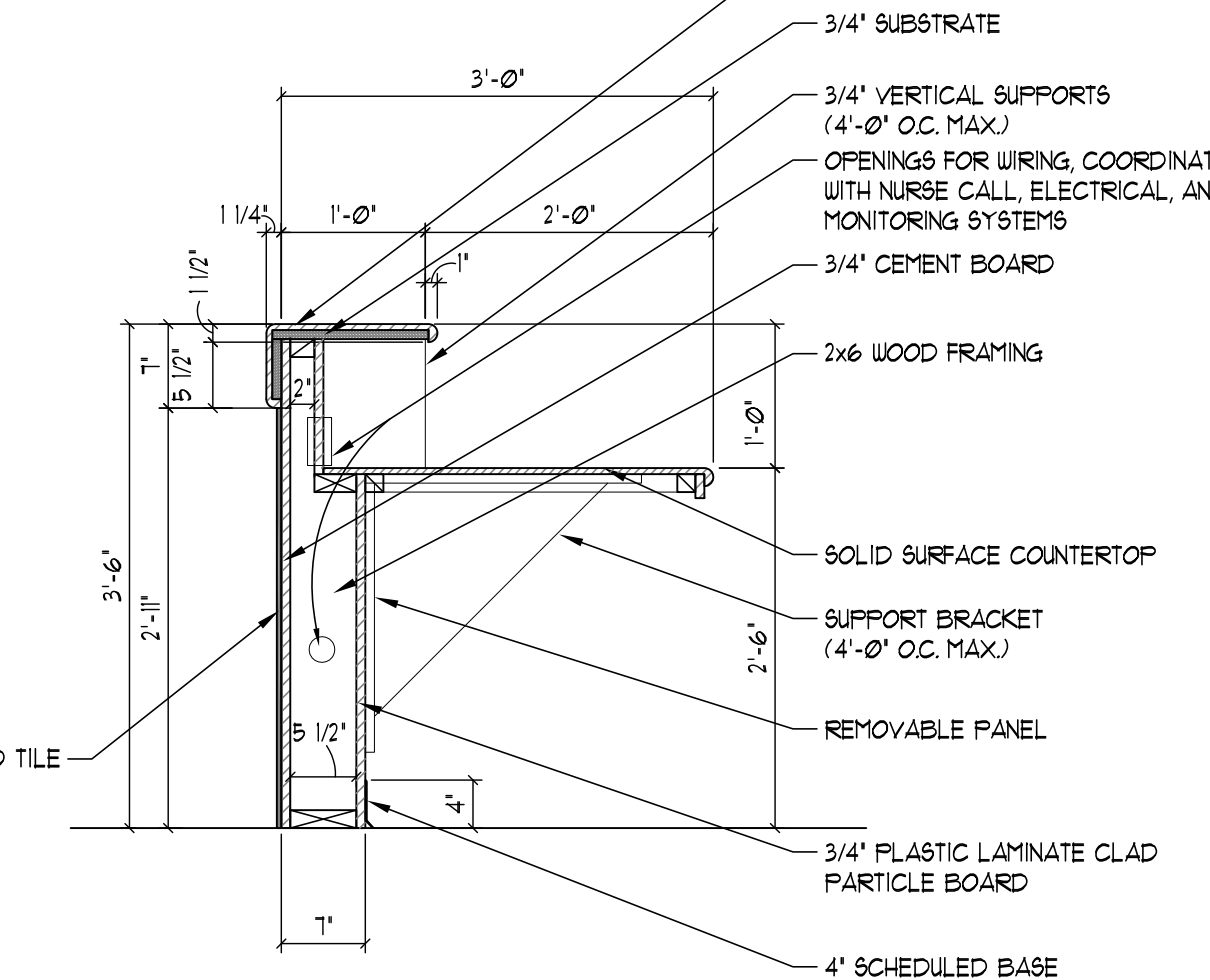
27 30" HIGH BASE - DB THREE DRAWER
SCALE: 3/4" = 1'-0"



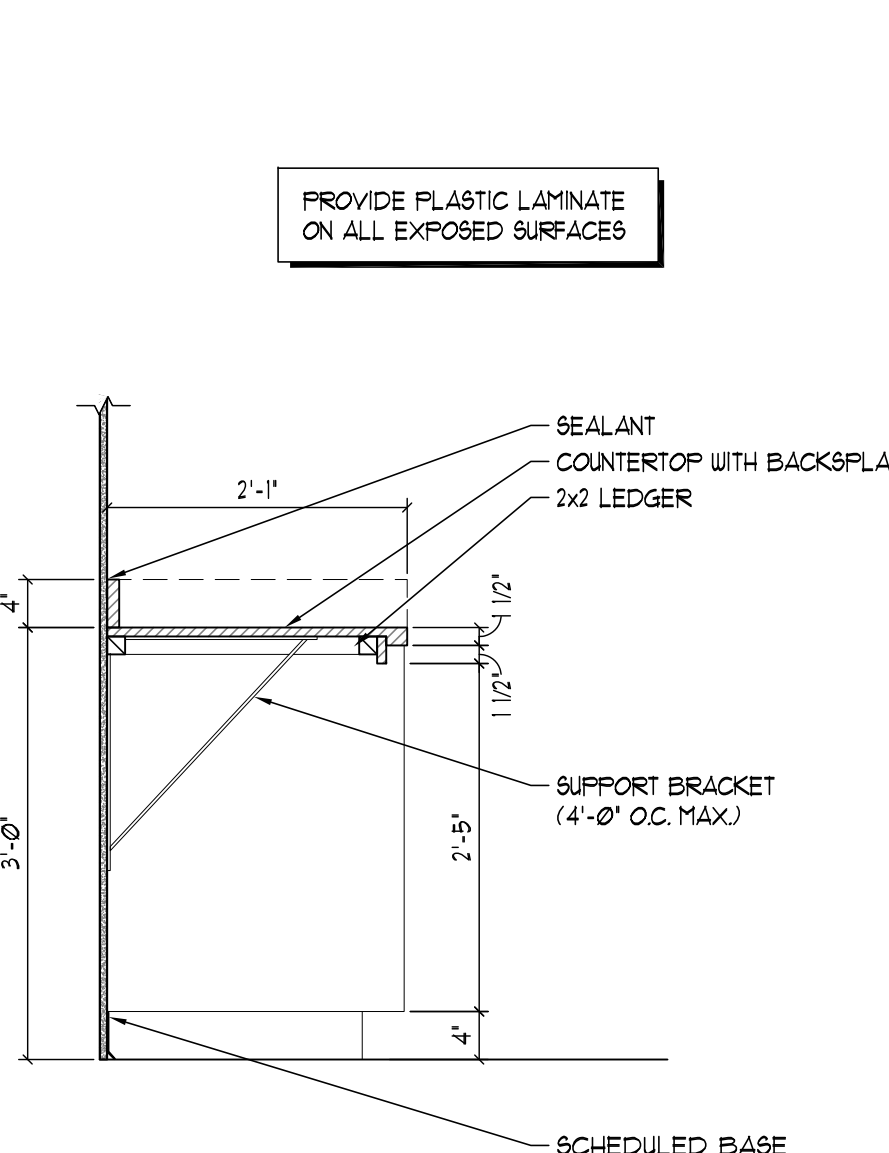
24 36" HIGH BASE ONE DRAWER
SCALE: 3/4" = 1'-0"



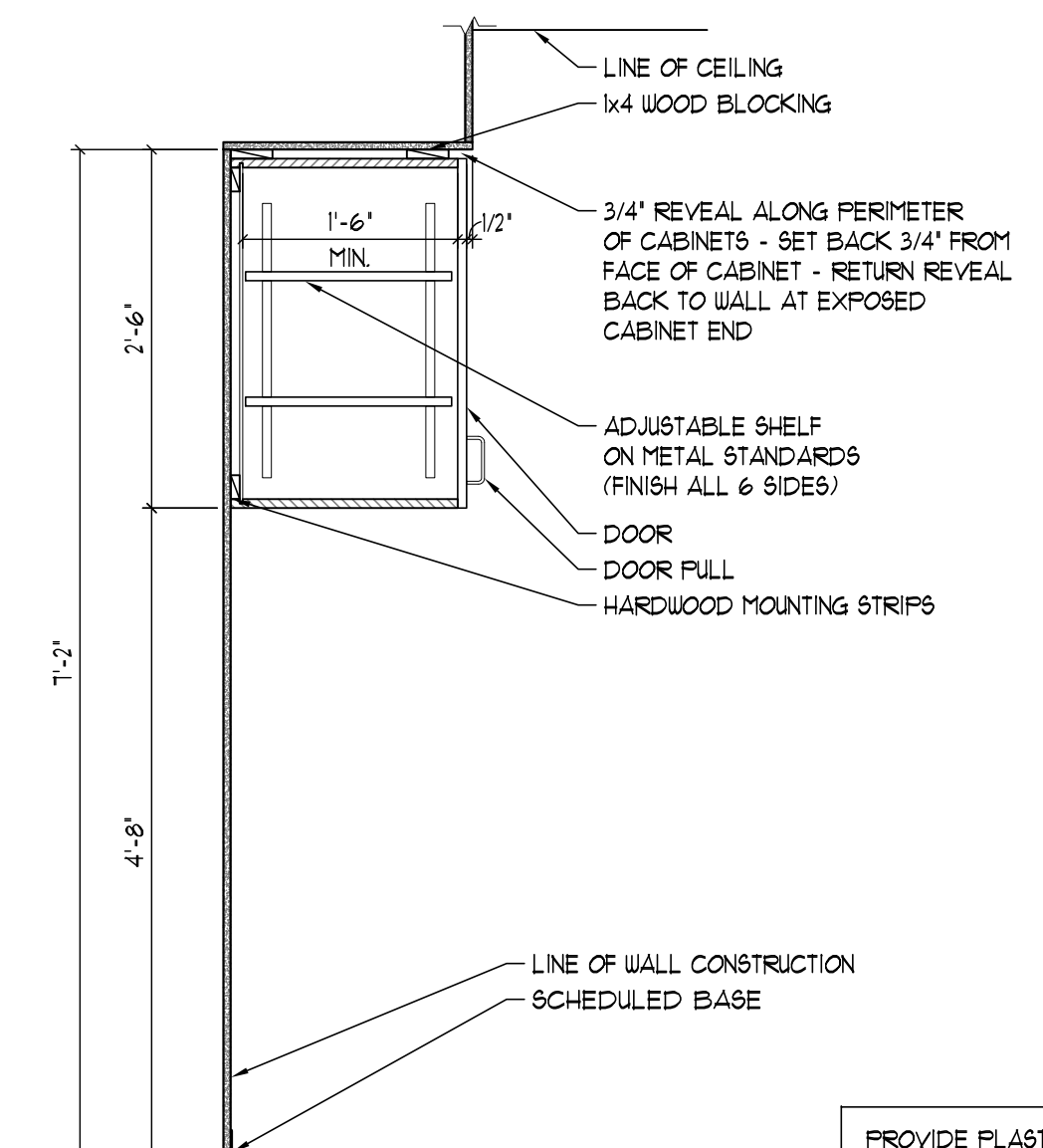
21 36" HIGH SINK BASE
SCALE: 3/4" = 1'-0"



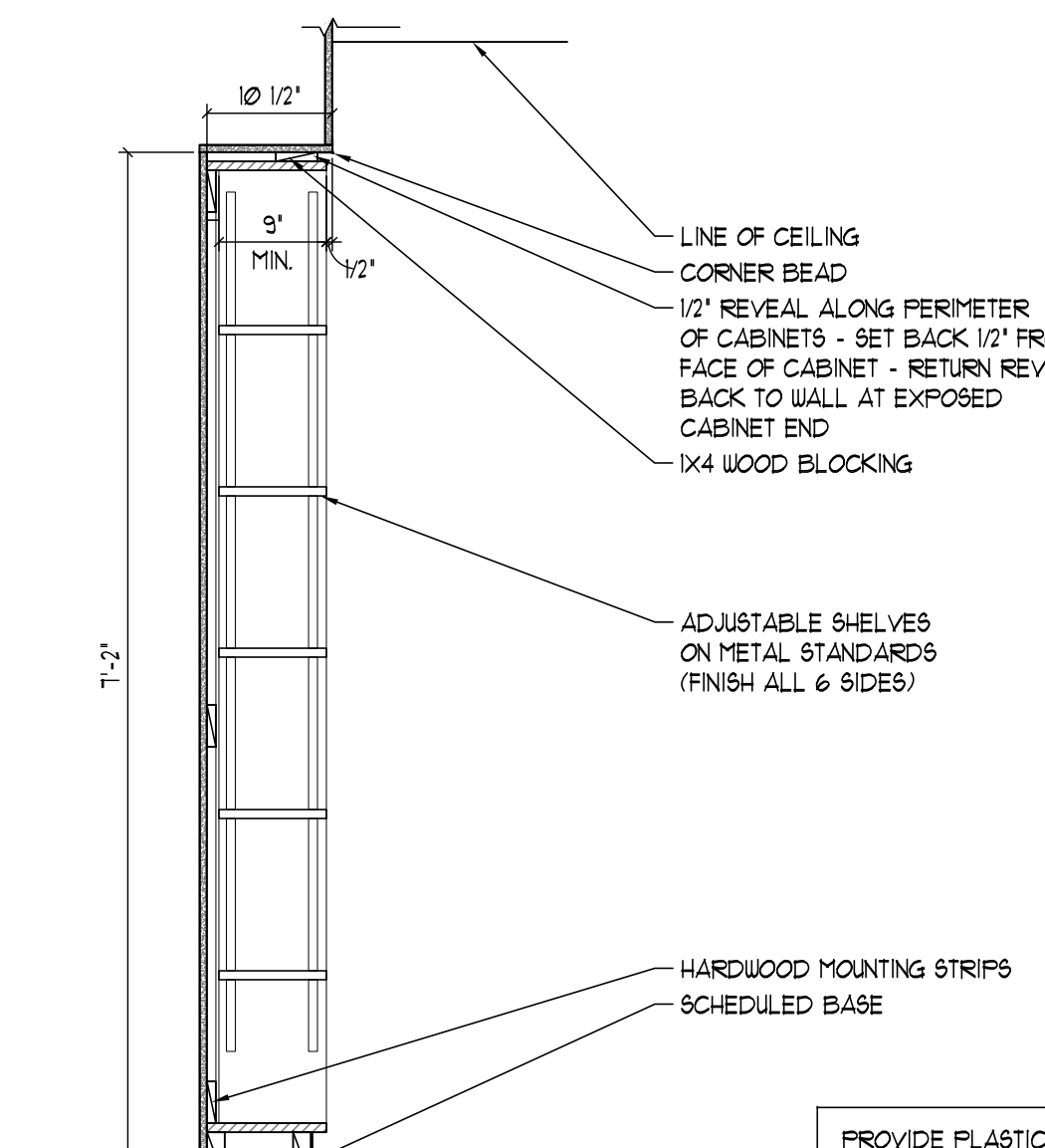
18 ISLAND WORKSTATION
SCALE: 3/4" = 1'-0"



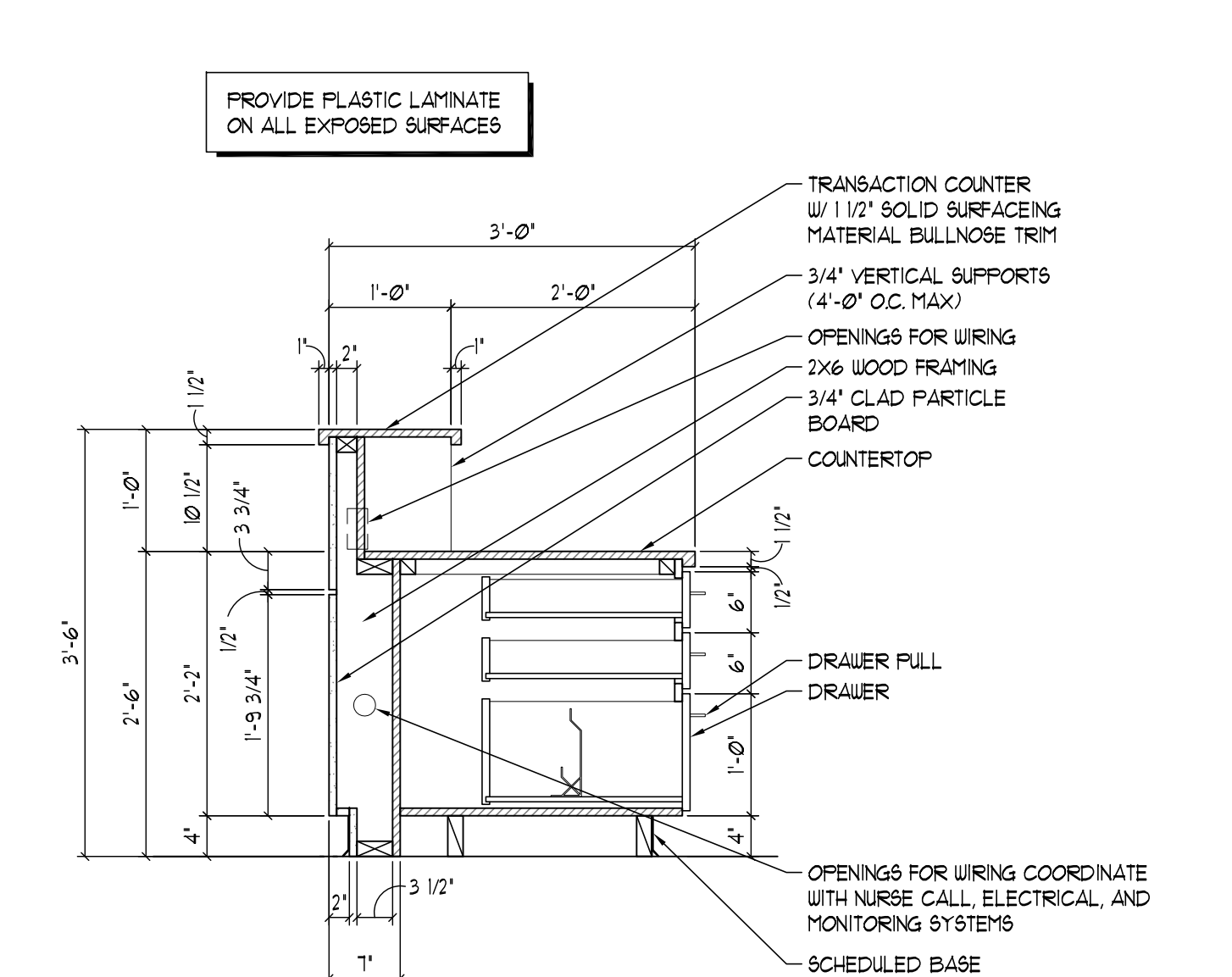
29 36" HIGH WORK SURFACE - KA
SCALE: 3/4" = 1'-0"



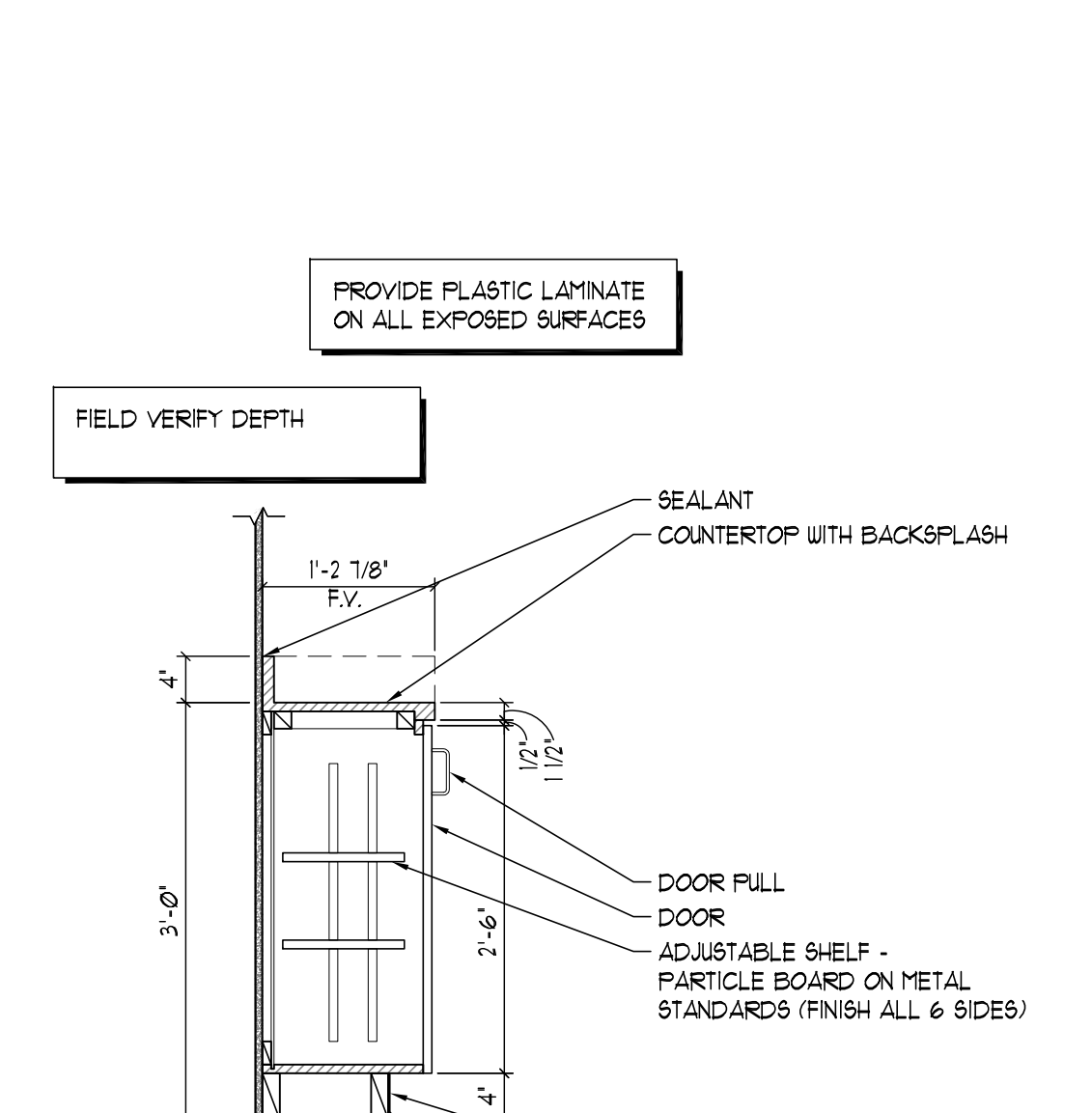
26 30" WALL CABINET - 18" DEEP
SCALE: 3/4" = 1'-0"



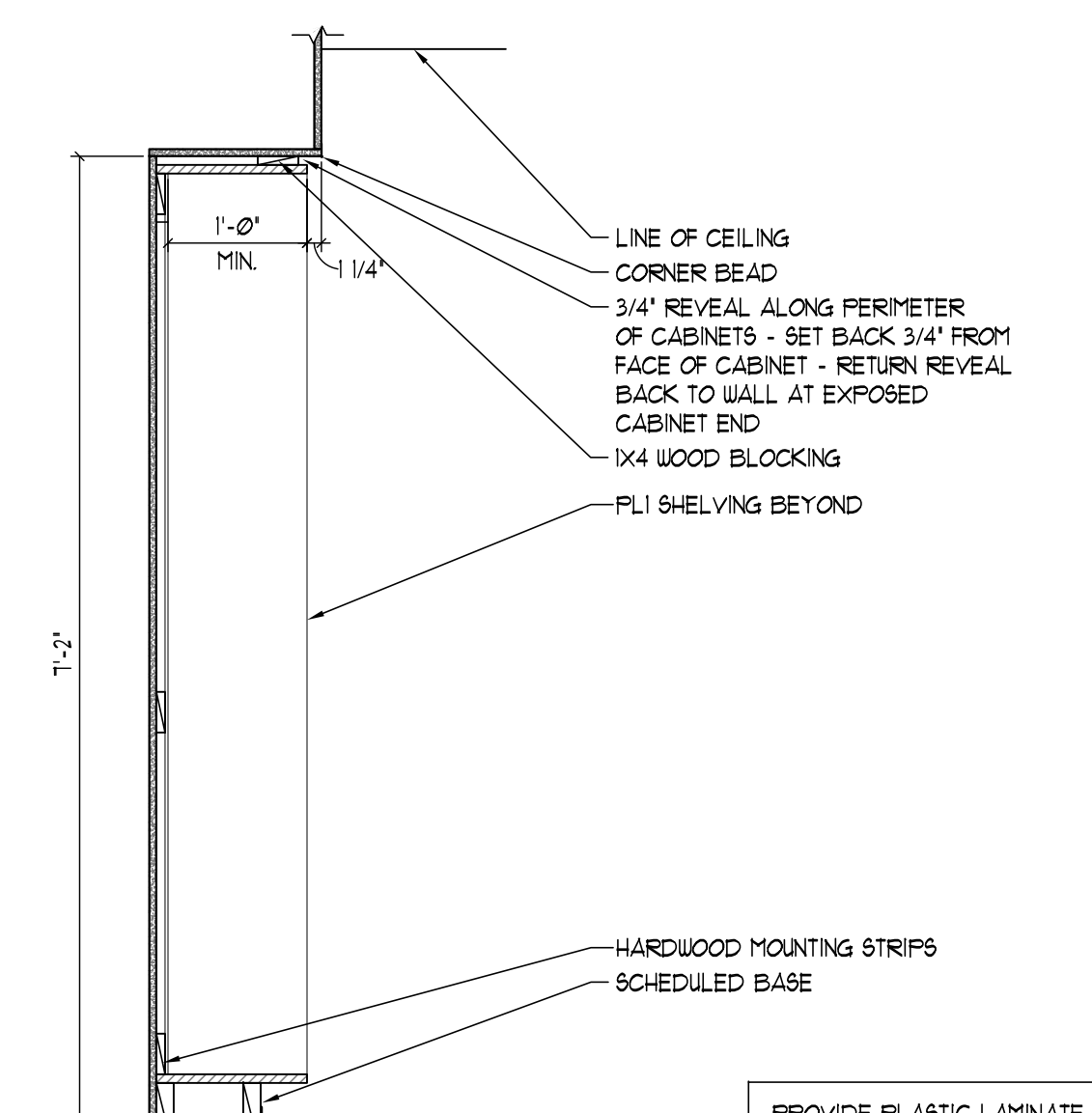
23 9" DEEP SHELVES ADJUSTABLE SHELVES OPEN
SCALE: 3/4" = 1'-0"



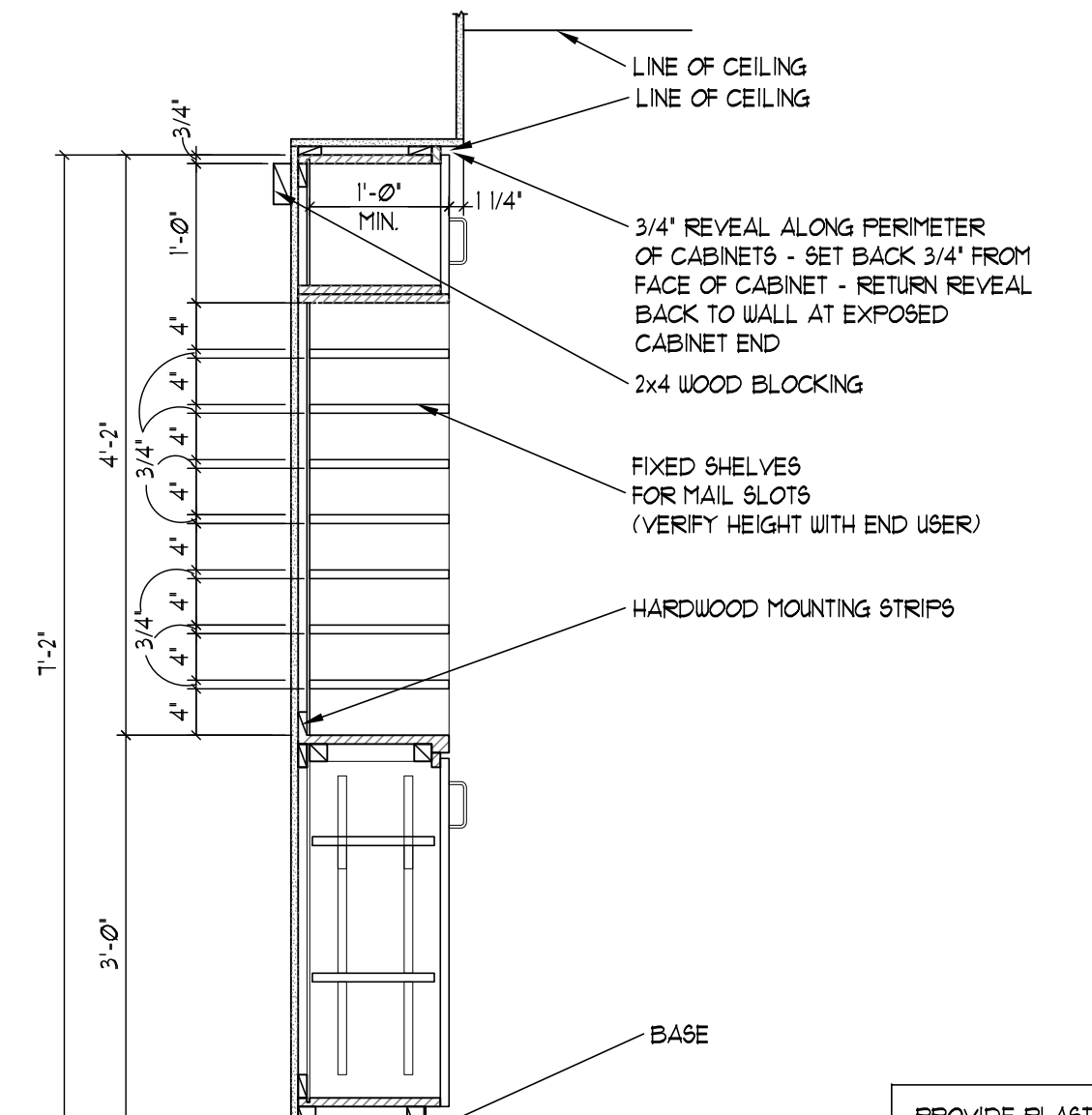
20 NURSE STATION 3 DRAWER BASE
SCALE: 3/4" = 1'-0"



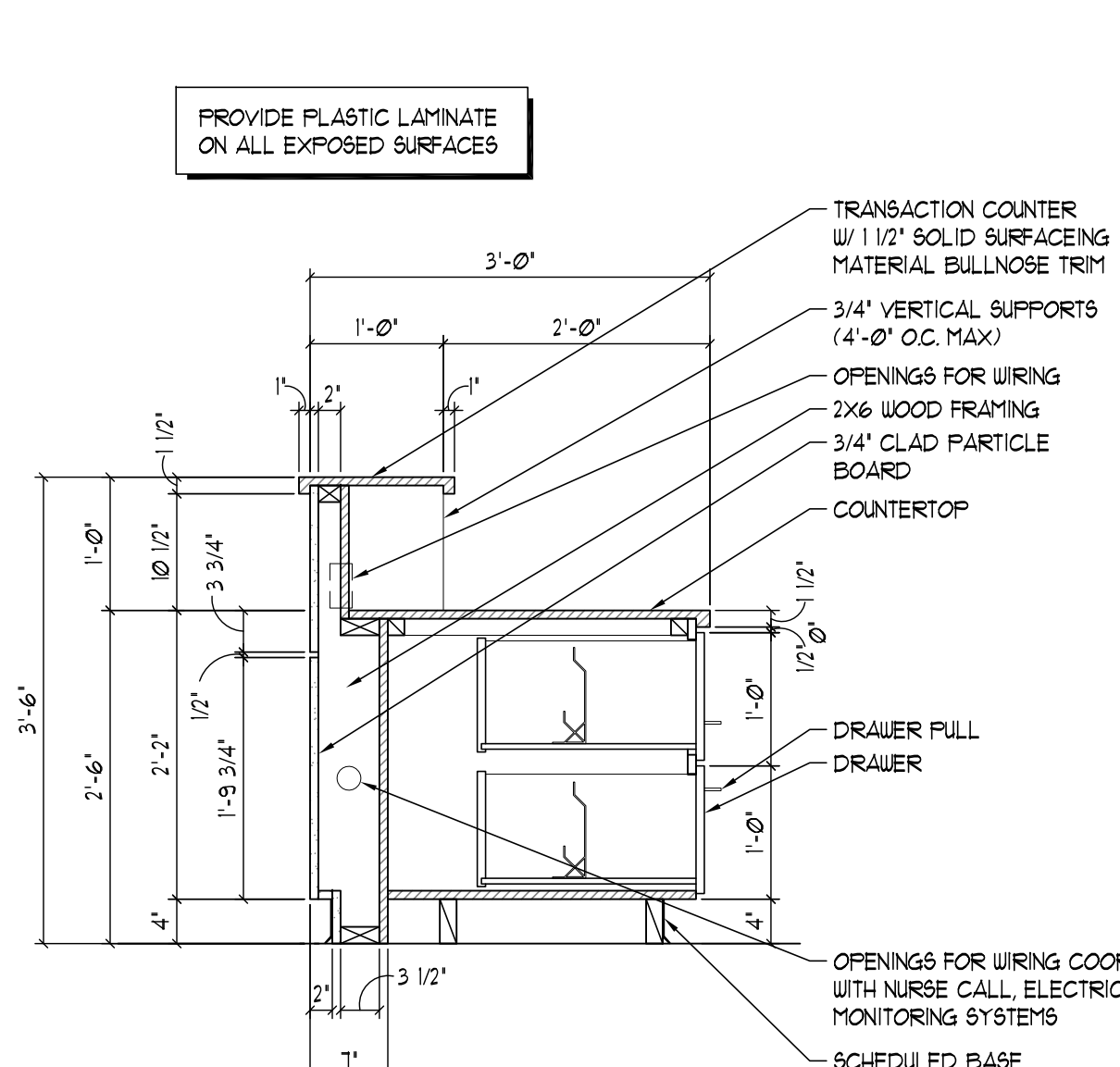
17 36" HIGH BASE DOOR BASE
SCALE: 3/4" = 1'-0"



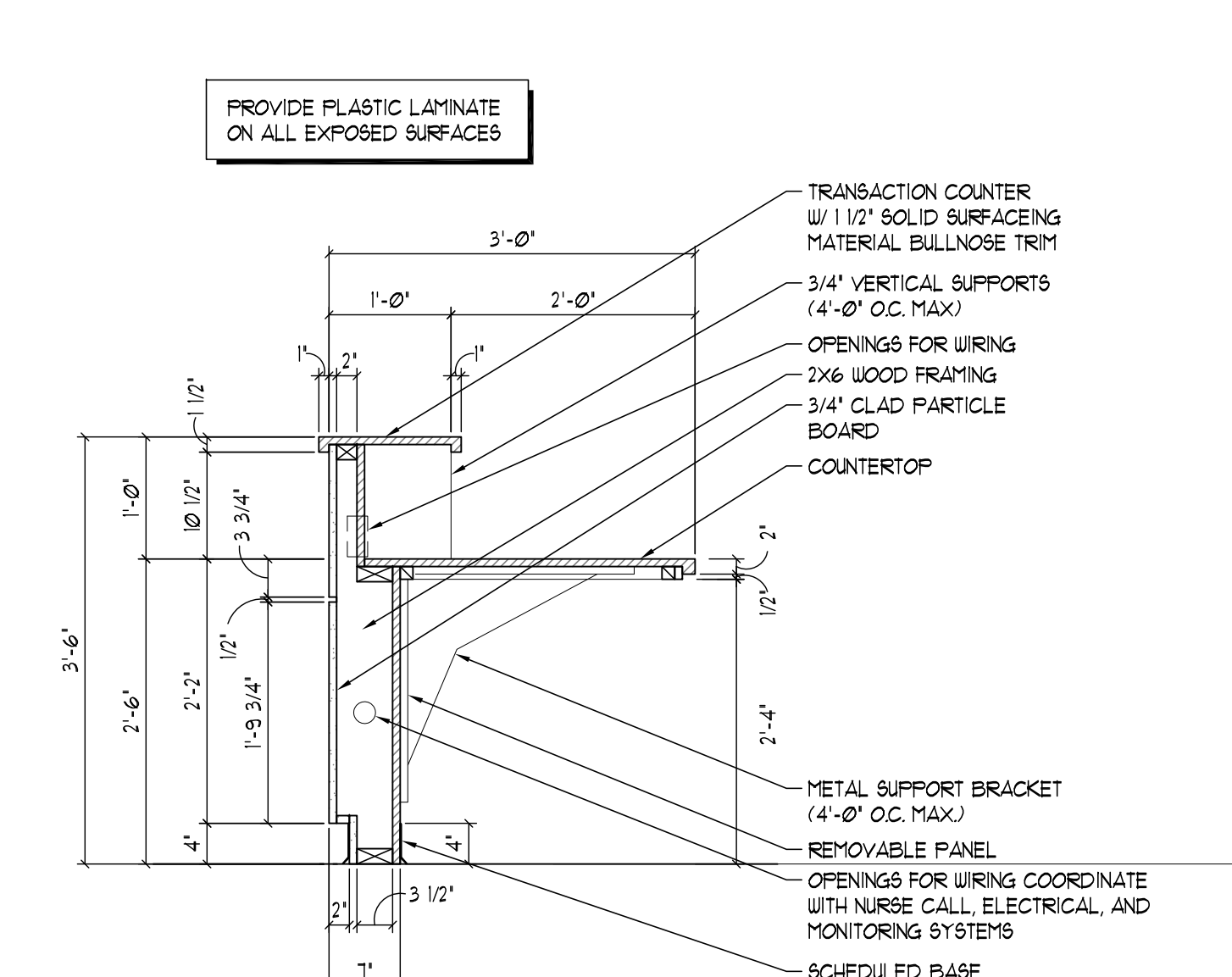
28 24" DEEP FULL HEIGHT VERTICAL SHELVES
SCALE: 3/4" = 1'-0"



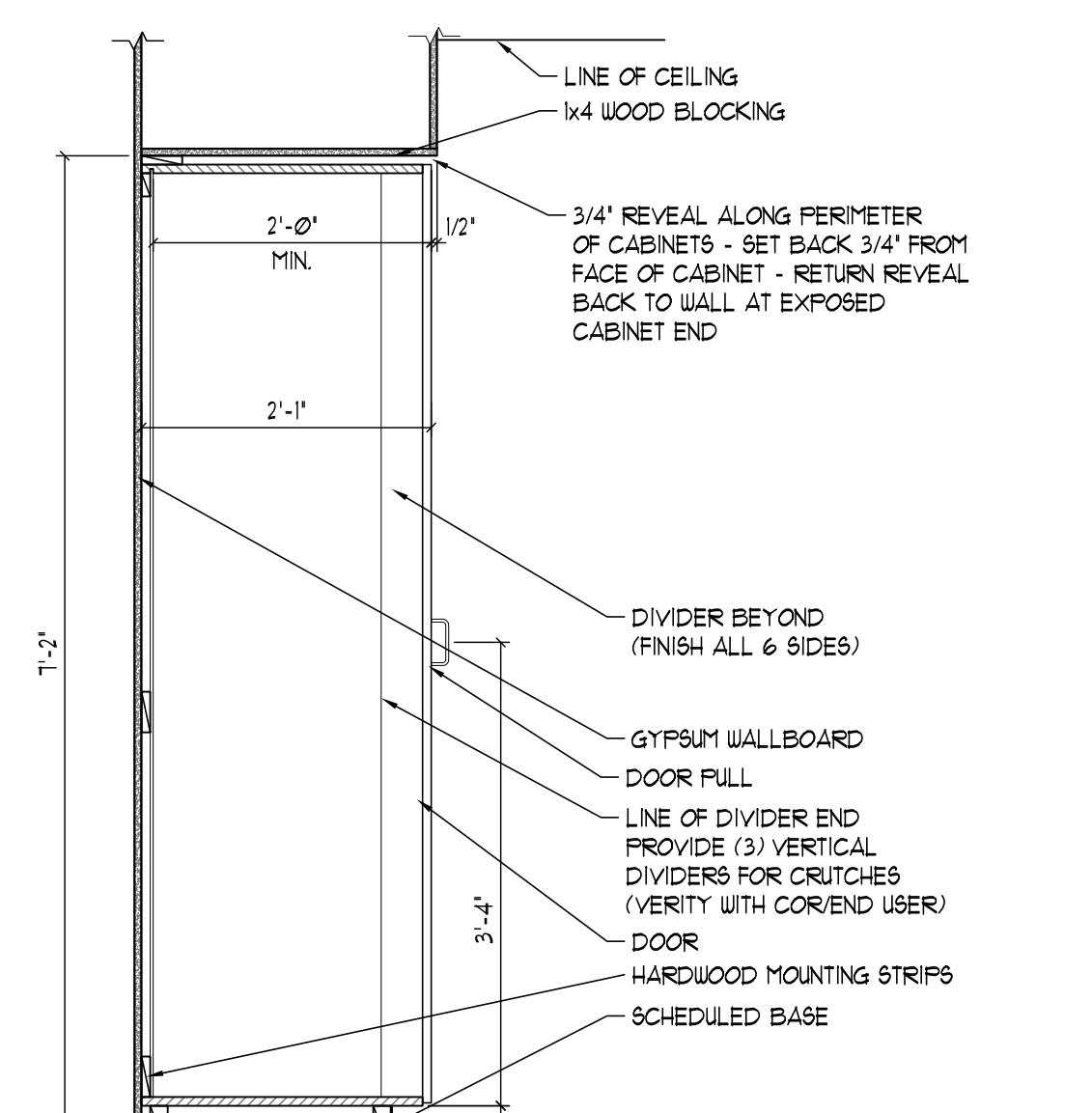
25 MAIL SLOTS
SCALE: 3/4" = 1'-0"



22 NURSE STATION 3 DRAWER BASE
SCALE: 3/4" = 1'-0"



19 NURSE STATION KNEE SPACE
SCALE: 3/4" = 1'-0"



16 24" DEEP FULL HEIGHT W/ DIVIDERS
SCALE: 3/4" = 1'-0"

CONSULTANTS:		PROJECT MANAGERS AND ENGINEERS:		Drawing Title CASEWORK SECTIONS		Project Title RENOVATE ED & PRIMARY CARE Phase 1 & 2		Project Number 667-10-100		Office of Construction and Facilities Management Department of Veterans Affairs	
				Approved: Project Director		Location SHREVEPORT VAMC 510 EAST STONER AVE		Building Number 1N, 1E			
						Date 01/09/13		Drawing Number A12.2			
						Checked JAH		Drawn CSH			
Revisions:		Date		3 EXECUTIVE COURT, UNIT 4 SOUTH BARRINGTON, IL 60010				Dwg. 36 of 112			

The Estopinal Group
820 Jordan Street, Suite 507
Shreveport, LA 71101
tel. 318.424.3700
fax 318.424.3764

TNF A VETERAN OWNED COMPANY
3 EXECUTIVE COURT, UNIT 4
SOUTH BARRINGTON, IL 60010