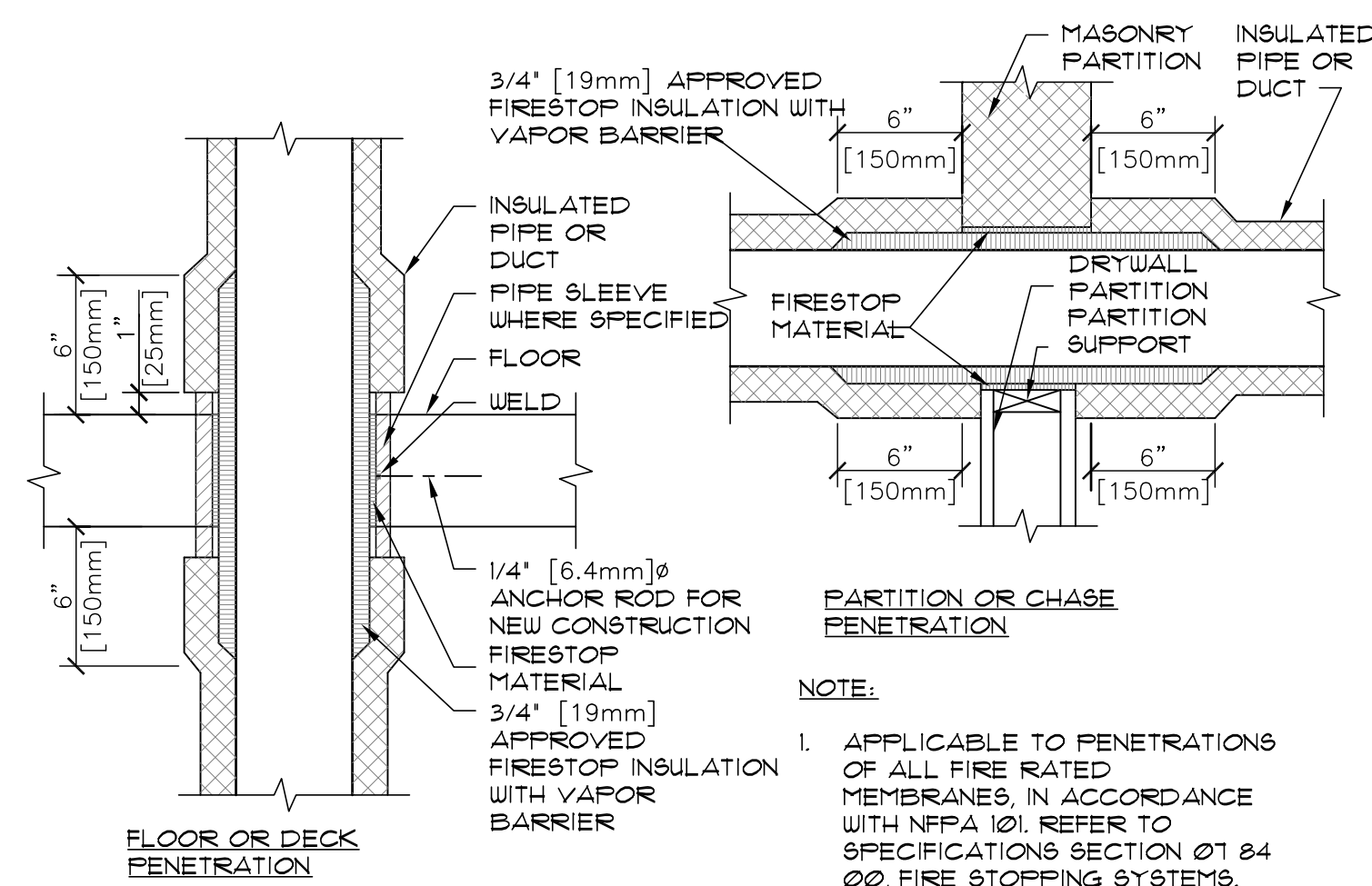


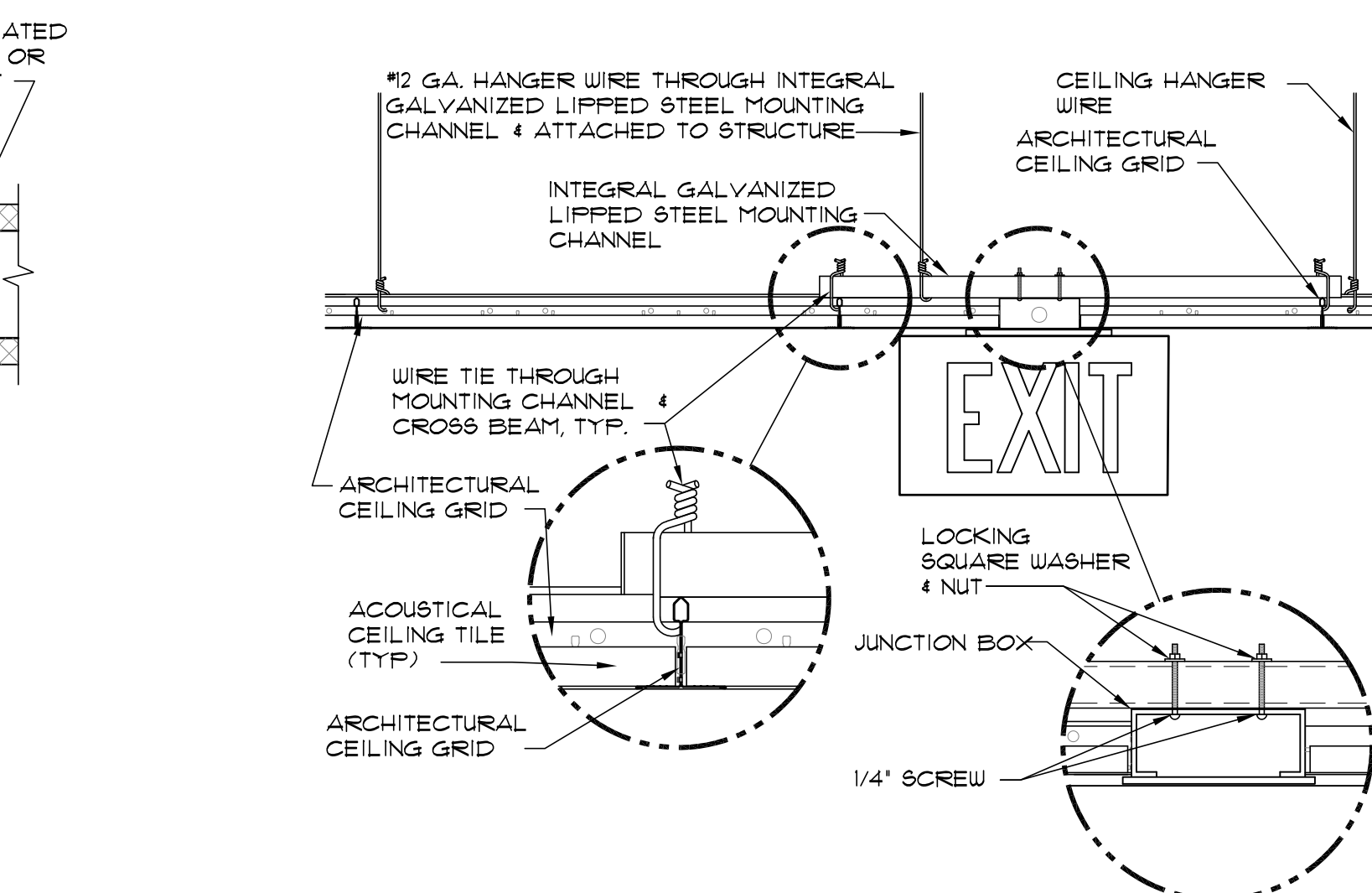
09 TYPICAL CORNER DETAIL

SCALE: NTS



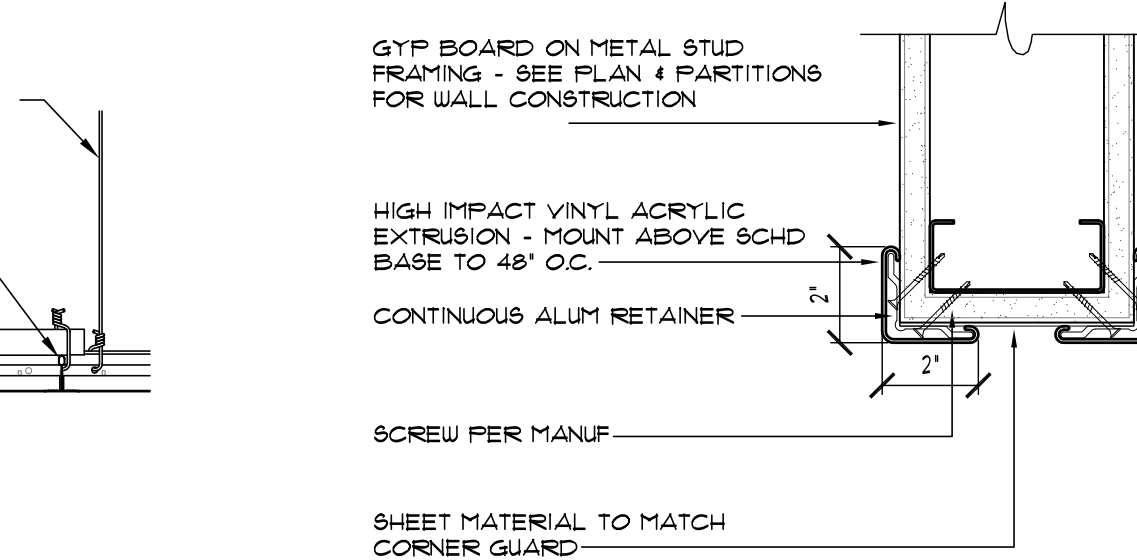
02 DEFLECTION SYSTEM - 1 HR RATED GYPSUM BOARD FIRE RATED CONCRETE DECK

SCALE: 3\"/>



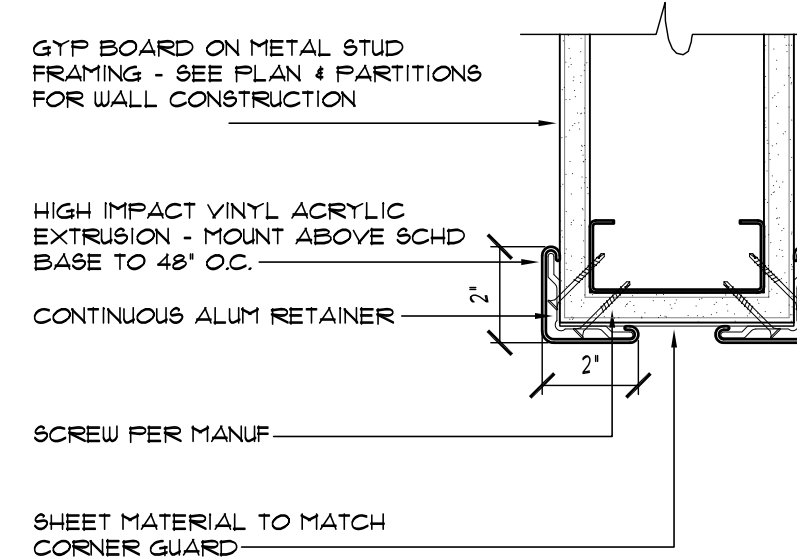
01 SINGLE CORNERGUARD SURFACE MOUNT

3\"/>



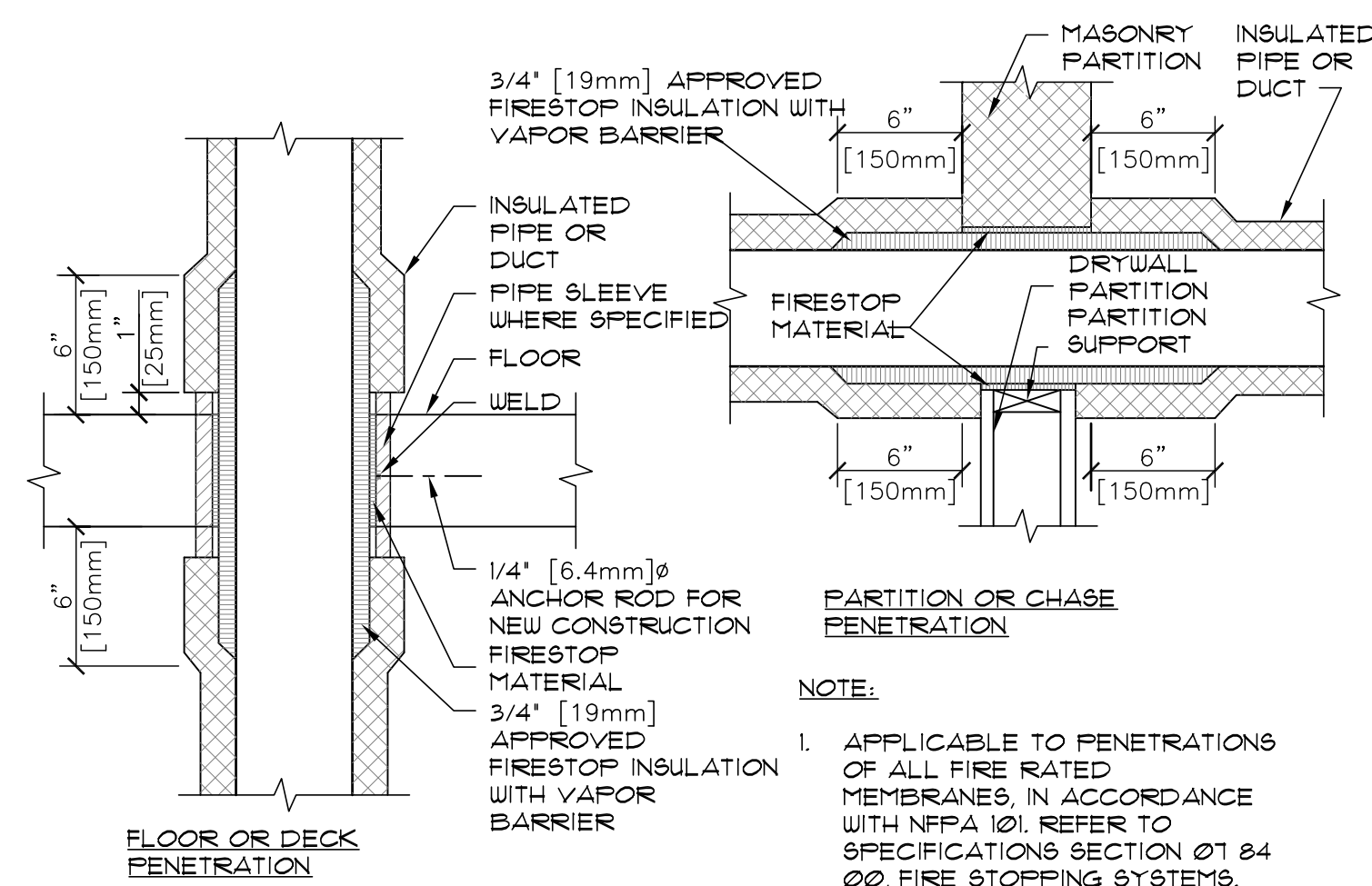
07 DOUBLE CORNERGUARD SURFACE MOUNT

3\"/>



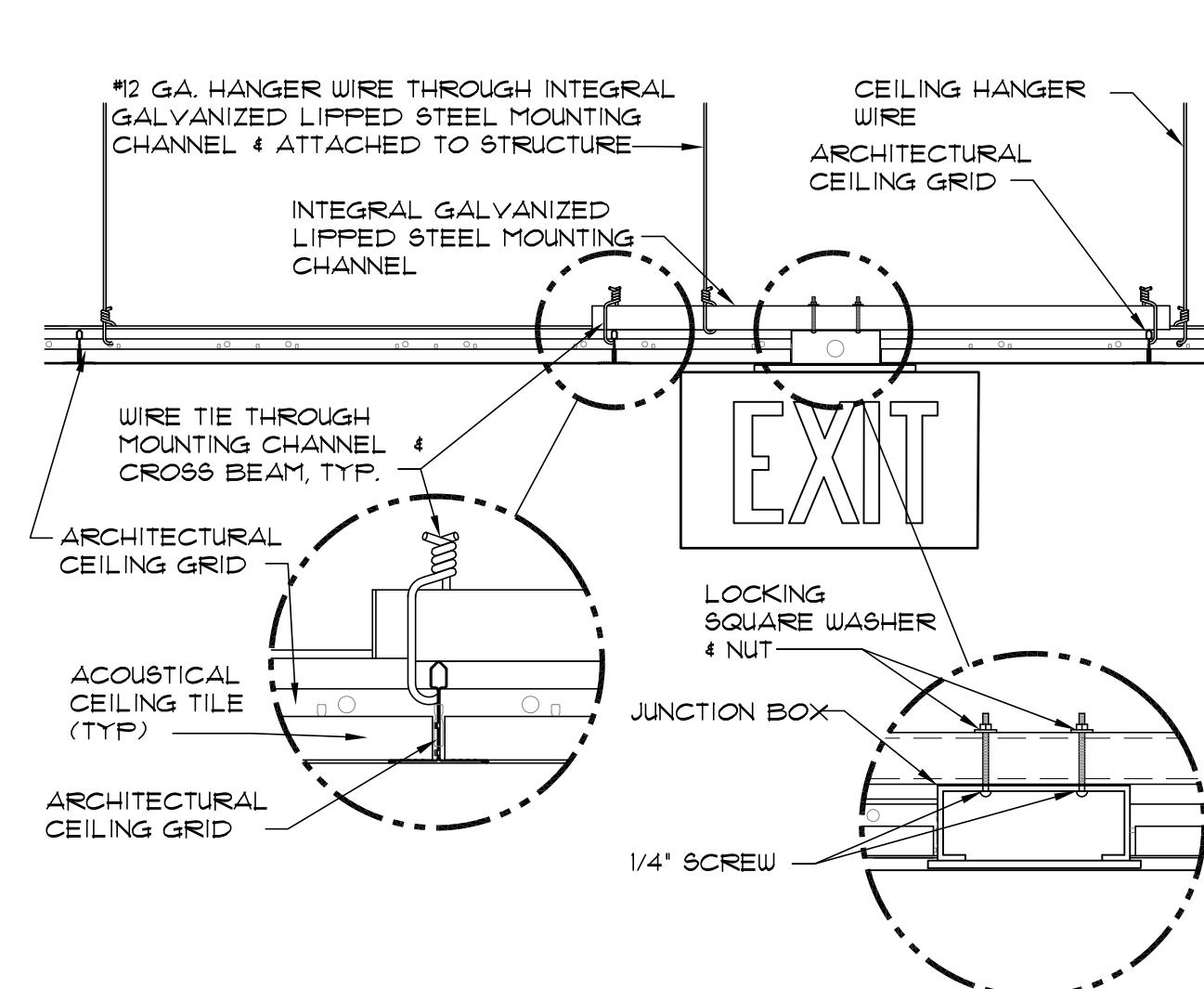
03 PIPE/DUCT PENETRATION OF SMOKE / FIRE BARRIERS

NTS



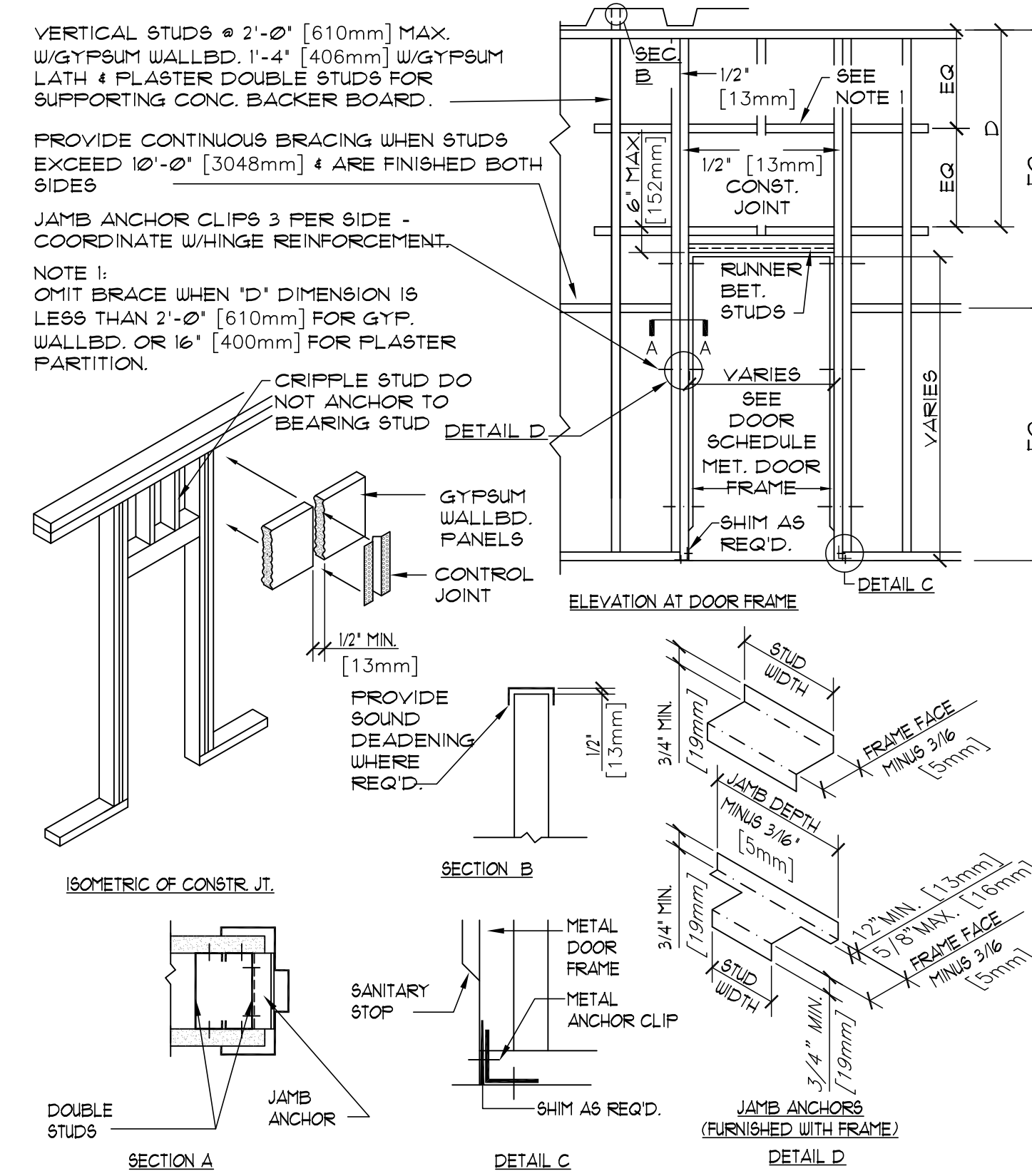
04 EXIT SIGN MOUNTING LAY-IN CEILING

NTS



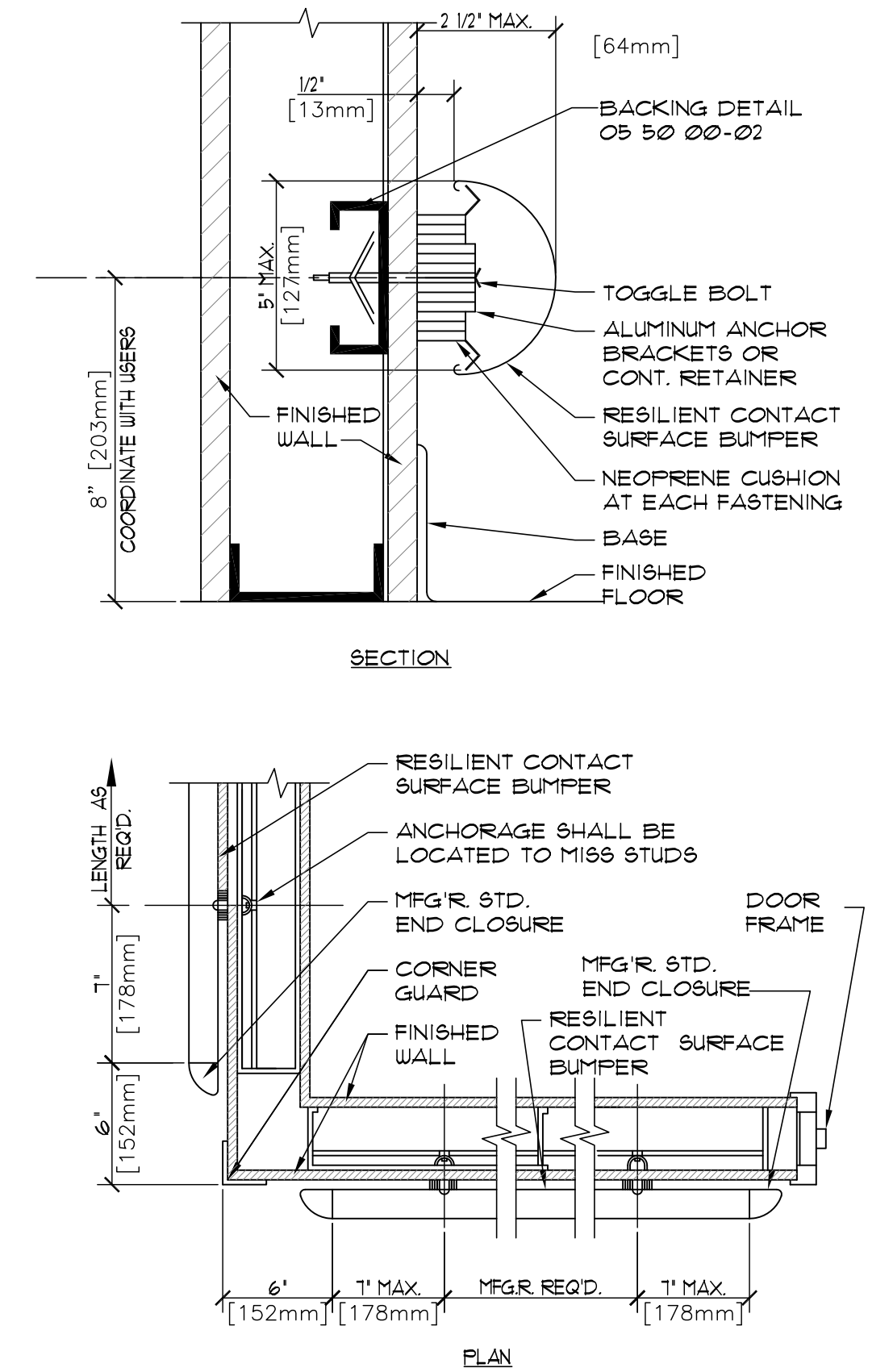
05 PARTITION FRAMING FOR DOORS

NTS



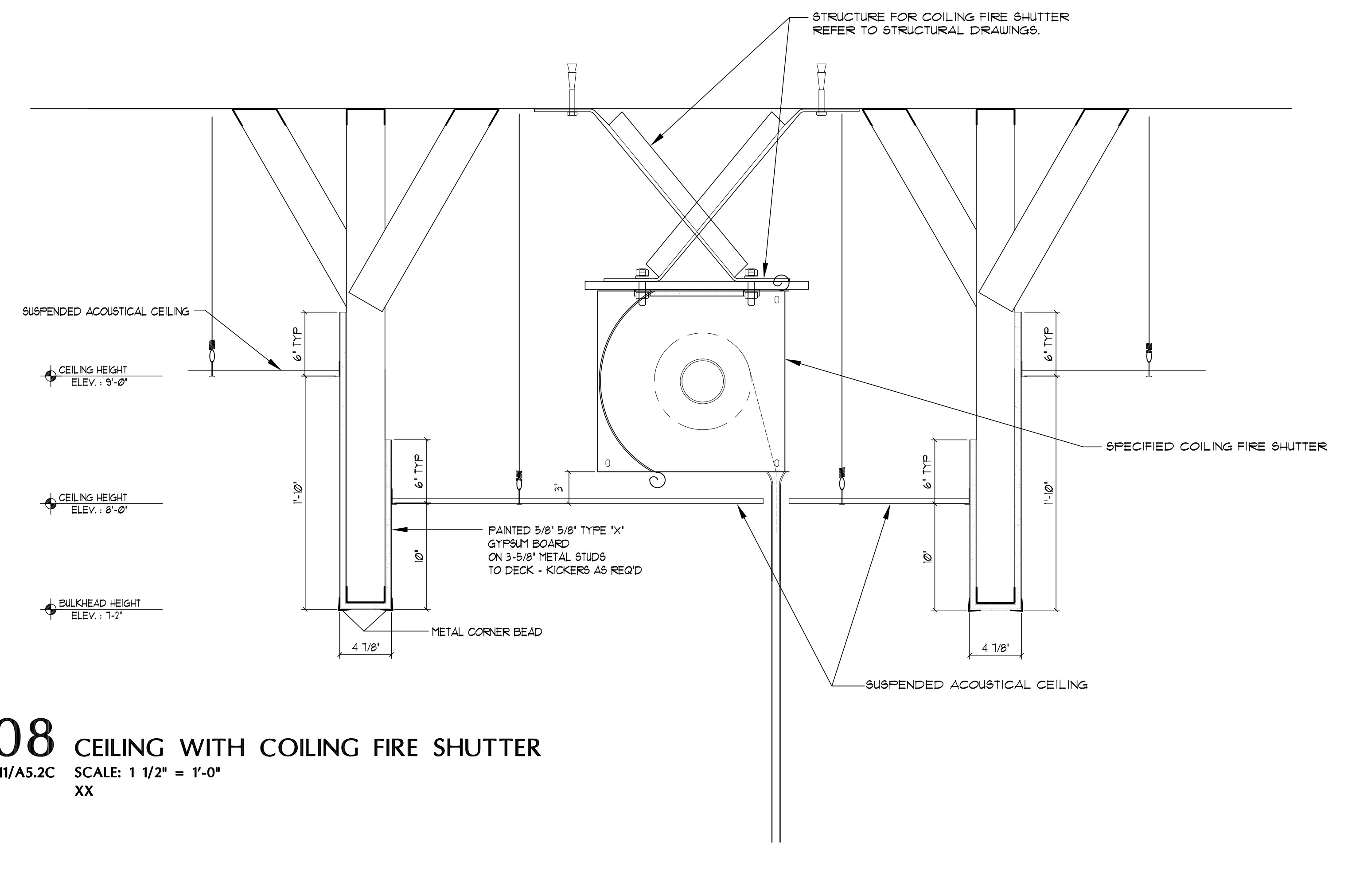
06 WALL GUARDS

NTS



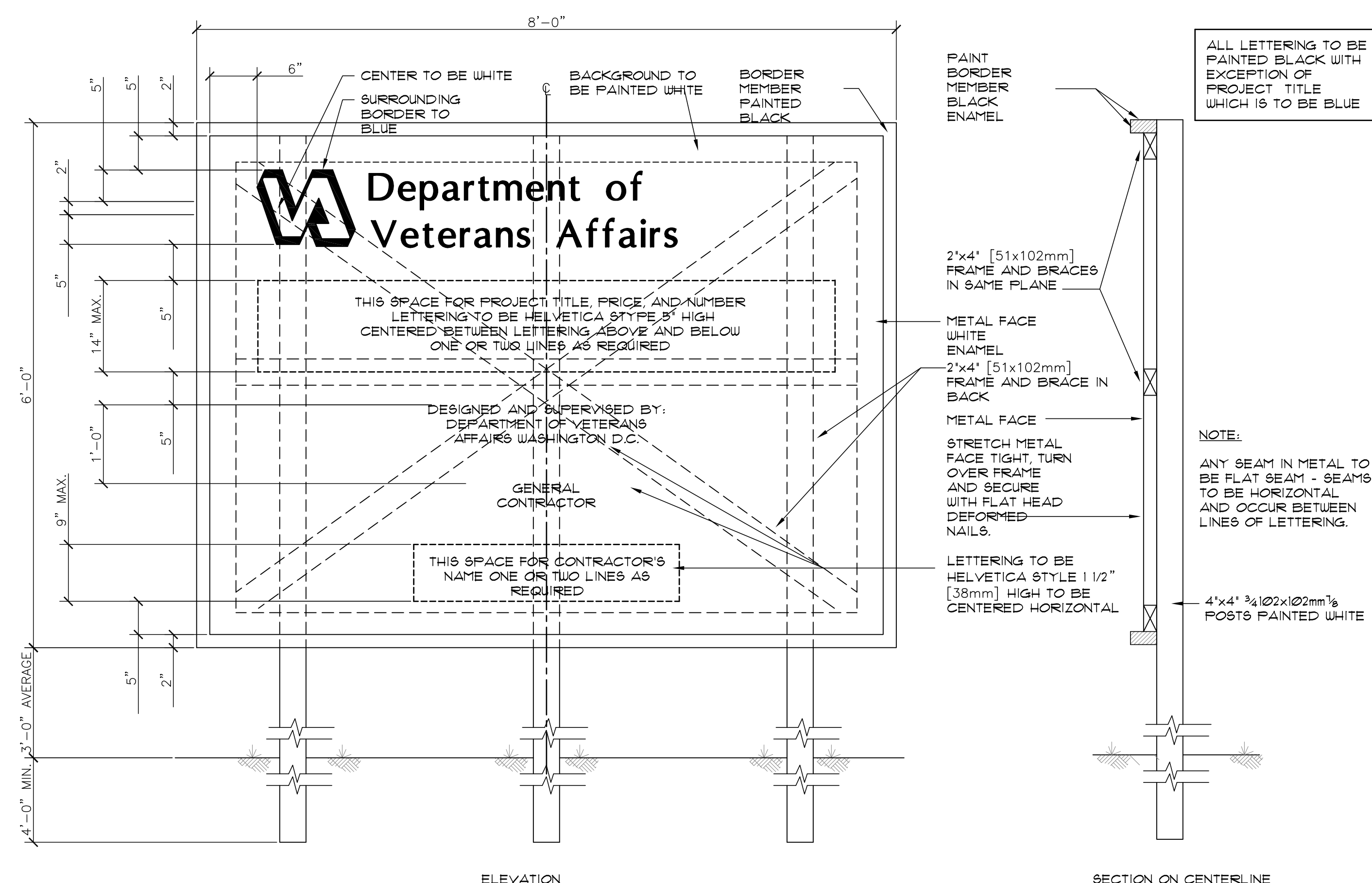
08 CEILING WITH COILING FIRE SHUTTER

11/A5.2C
SCALE: 1 1/2\"/>



10 CONSTRUCTION SIGN

NTS



CONSULTANTS:



820 Jordan Street, Suite 507 tel. 318.424.3700
Shreveport, LA 71101 fax 318.424.3764

PROJECT MANAGERS AND ENGINEERS:



3 EXECUTIVE COURT, UNIT 4
SOUTH BARRINGTON, IL 60010

Drawing Title
MISCELLANEOUS DETAILS

Approved: Project Director

Project Title
RENOVATE ED & PRIMARY CARE
Phase 1 & 2

Location
SHREVEPORT VAMC
510 EAST STONER AVE

Date
01/09/13

Checked
JAH

Drawn
CSH

Project Number
667-10-100

Building Number
IN, IE

Drawing Number
A13.1

Dwg. 37 of 112

Office of
Construction
and Facilities
Management

