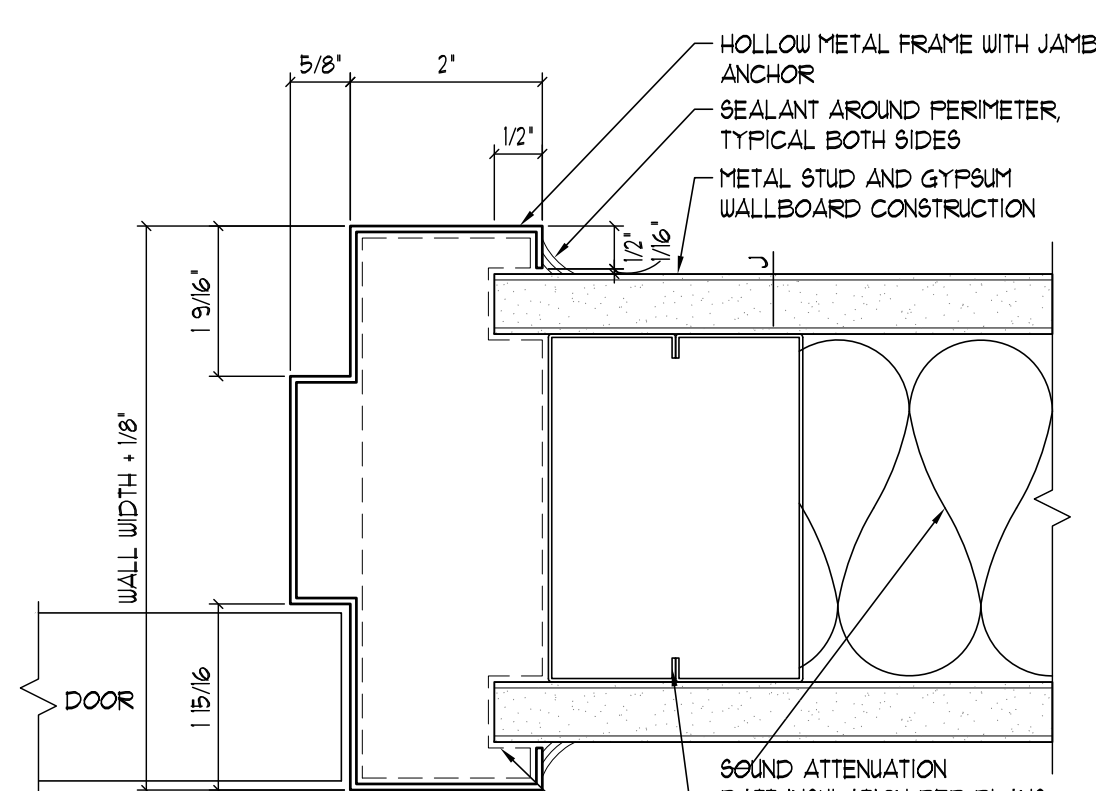


07 EXTERIOR SLIDING DOOR HEAD/SILL DETAIL

SCALE: 3"=1'-0"



02 WALL TYPE J
TYPICAL JAMB -
HOLLOW METAL
SCALE: 6"=1'-0"



04 NOT USED
SCALE: 3"=1'-0"

REFER TO PROJECT MANUAL FOR DOOR HARDWARE
* VERIFY FUNCTION WITH OWNER

1 FRAME ELEVATION
SCALE: 1/4"=1'-0"

2 INTERIOR FRAME
SCALE: 1/4"=1'-0"

3 INTERIOR FRAME
SCALE: 1/4"=1'-0"

4 INTERIOR FRAME
SCALE: 1/4"=1'-0"

5 INTERIOR FRAME
SCALE: 1/4"=1'-0"

6 INTERIOR FRAME
SCALE: 1/4"=1'-0"

7 INTERIOR FRAME
SCALE: 1/4"=1'-0"

8 FRAME ELEVATION
SCALE: 1/4"=1'-0"

9 FRAME ELEVATION
SCALE: 1/4"=1'-0"

- A. ALL FRAMES ARE TO BE HELDED CONSTRUCTION
- B. PROVIDE DOUBLE STRUCTURAL STUDS AT JAMBS WITH OPENINGS GREATER THAN 4'-0".
- C. REFER TO THE PARTITION TYPES FOR ADDITIONAL INFORMATION.
- D. PROVIDE 2" HEIGHT STRUCTURAL STUDS TO THE STRUCTURAL DECK ABOVE AT ALL FRAMED OPENINGS.
- E. PROVIDE SOUND ATTENUATION BATT INSULATION WHERE INDICATED ON THE FLOOR PLANS.
- F. ALL JAMBS ARE TO BE GROUTED SOLID.
- G. ALL FRAMES ARE TO BE SPACED AT THE JAMB ANCHORS.
- H. PROVIDE MINIMUM THREE JAMB ANCHORS PER JAMB SIDE.
- I. ALL RATED DOORS SHALL INCLUDE RATED HARDWARE AND FRAMES.
- J. PROVIDE 2" ARMOR ON ALL GLASS AREAS AS INDICATED ON SCHEDULE. ARMOR SHALL BE ADHERED WITH SELF-ADHESIVE.
- K. MAGNETIC HOLD OPENERS SHALL BE TIED INTO FIRE ALARM SYSTEM AND SUPPLIED BY VENDOR.
- L. ACCESS CONTROL AND POWER SUPPLY SHALL BE PROVIDED BY VENDOR.
- M. PROVIDE SILENCERS FOR ALL DOOR FRAMES.
- N. ALL DOORS WITH MANUAL PULL BOLTS SHALL HAVE DUST PROOF STRIKE.
- O. REFER TO ARCHITECTURAL PLOTTING FOR THE LOCATION OF CARD READERS AND PUSH PADS THAT SHALL BE PROVIDED FOR AUTOMATIC DOORS.

ACCORDION DOOR	INSULATED
ACOUSTICAL PANEL	KEY PAD
AUTOMATIC	LEAD LINED
BI-FOLD	MOTORIZED
BI-PARTING	OVERHEAD COILING DOOR
BONOMOURED LIGHT	OVERHEAD SECTIONAL DOOR
BUTT GLAZED	OVERHEAD SHUTTER
CARD READER	PAINT
COUNTER SHUTTER	PASS-THRU
DOUBLE DOORS	PUSH PAD
DOUBLE EGRESS DOORS	RIF SHIELDS
DUTCH DOORS	REVOLVING DOOR
EMERGENCY STRIKE	SCREEN
ENTRANCE SLIDER	SIGELIGHT
EXISTING TO BE RELOCATED	SLIDING GLASS
EXISTING TO REMAIN	SLOPED
FIRE CURTAIN	STOREROOM
FIRE SHUTTER	TE INFO FIRE ALARM SYSTEM
FIXED PANEL	TE INFO SECURITY SYSTEM
HOLD OPEN(S)	TRIPLX PANEL
	W/O DOOR

NOTE: NOT ALL HARDWARE LISTED IN THE LEGEND IS UTILIZED IN THIS PROJECT.	CONTROL:	
DOOR:	C1	CLOSER STANDARD
AL1	C2	CLOSER W/ MAGNETIC HOLD OFFENS
ASL	C3	CLOSER W/ DELAYED ACTION
GL	C4	WALL STOP
GL	C5	FLOOR STOP
AL1	C6	OVERHEAD STOP
AL1	C7	MAGNETIC LOCK
SCU	C8	ELECTRIC STRIKE
IG	C9	AUTOMATIC DOOR OPERATOR
IG	C10	DOOR OPERATOR PUSH PADS
IG	C11	ACCESS CONTROL / CARD READER
FRAME:	C12	COORDINATOR
AL1	C13	COMBO STRIKE AND RESCUE STOP
AL1	C14	CLOSER CONCEALED
AL1	C15	CLOSER W/ INTEGRAL STOP
GLAZING:	C16	ROLLER BUFFER
C	C17	DELAYED EGRESS SYSTEM
E		
F	PROTECTION:	
F	P1	KICK PLATE
P	P2	DOOR ARMOR
P	P3	MOP PLATE
S	P4	DOOR EDGE PROTECTION
LG		
LG	SEAL:	
	51	WEATHER STRIPPING
HINGES:	52	THRESHOLD
H1	53	ASTRA-GAL
H2	54	AUTOMATIC DOOR BOTTOM
C2	55	PERIMETER GASKETING
C2	56	DRIP STOP
H1	57	SLEEP
HT		
HT	MSB ABBREVIATIONS:	
HT	ETB	EXISTS TO REMAIN
HT	NA	NOT APPLICABLE
LATCH:	FV	FIELD VERIFY (G2 TO FIELD
L1	FRM	VERIFY PRIORITY TO FABRICATION)
L2	RO	ROUGH OPENING
L3		
L4	REMARKS:	
L5	1.	ANTI LIGATURE HARDWARES
L6	2.	INSULATED AND GALVANIZED DOOR
L7		AND FRAME
L8	3.	ADD COAT HOOK
L9	4.	HARDWARE BY DOOR MANUFACTURER
L10	5.	ADD SPOKE 4 DRAFT CONTROL KIT
L11		W/ POSITIVE LATCHING
L12	6.	NON-REMOVABLE PIN
L13	1.	GALVANIZED FRAME
L14	8.	PROVIDE ONE LATCH FOR BOTTOM LEAF
L15		TOP LEAF LATCH TO BOTTOM LEAF
L16		WITH SURFACE STOP
L17	9.	PROVIDE DOOR PROTECTION ON BOTH SIDES
L18		KEEPT BOTH SIDES
	10.	PROVIDE INTEGRAL BLINDS IN VISION PANEL