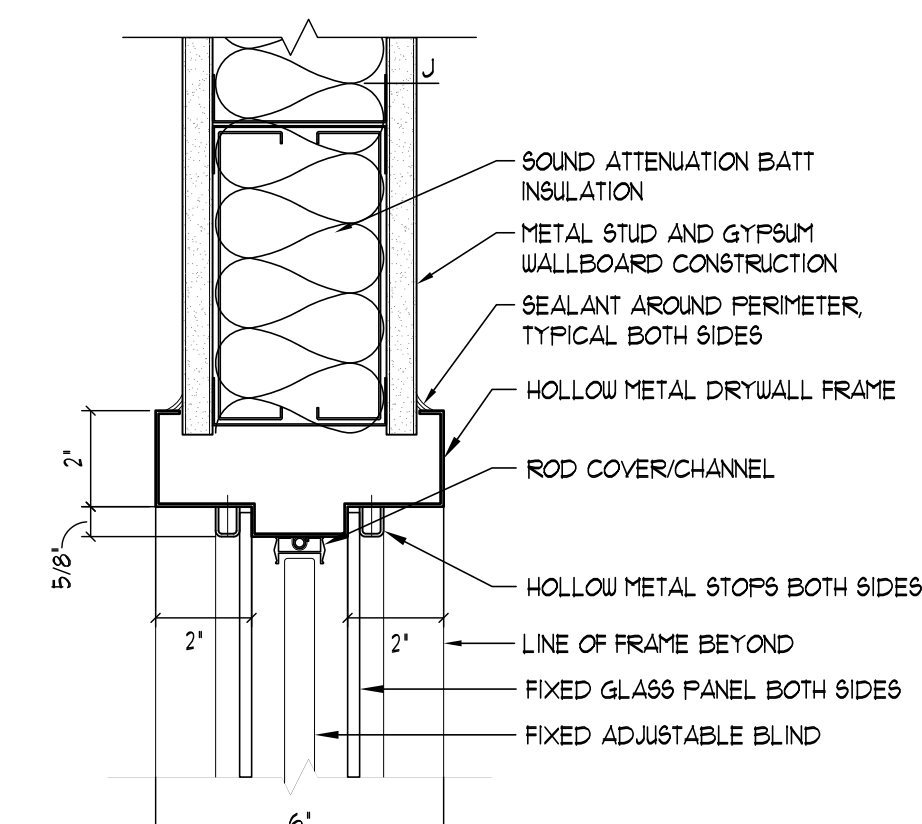
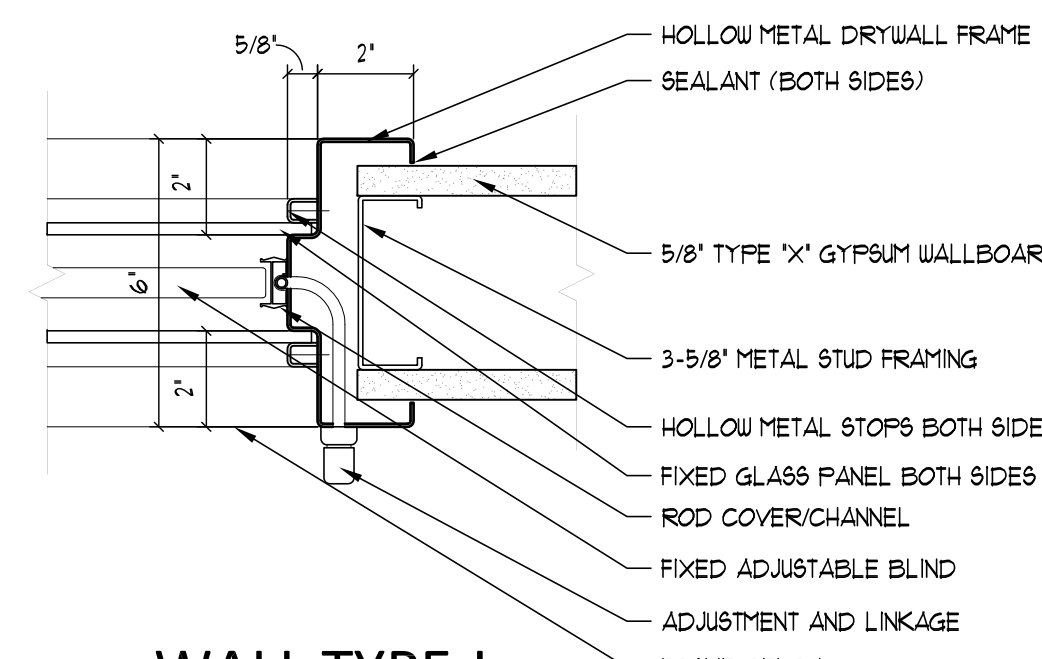


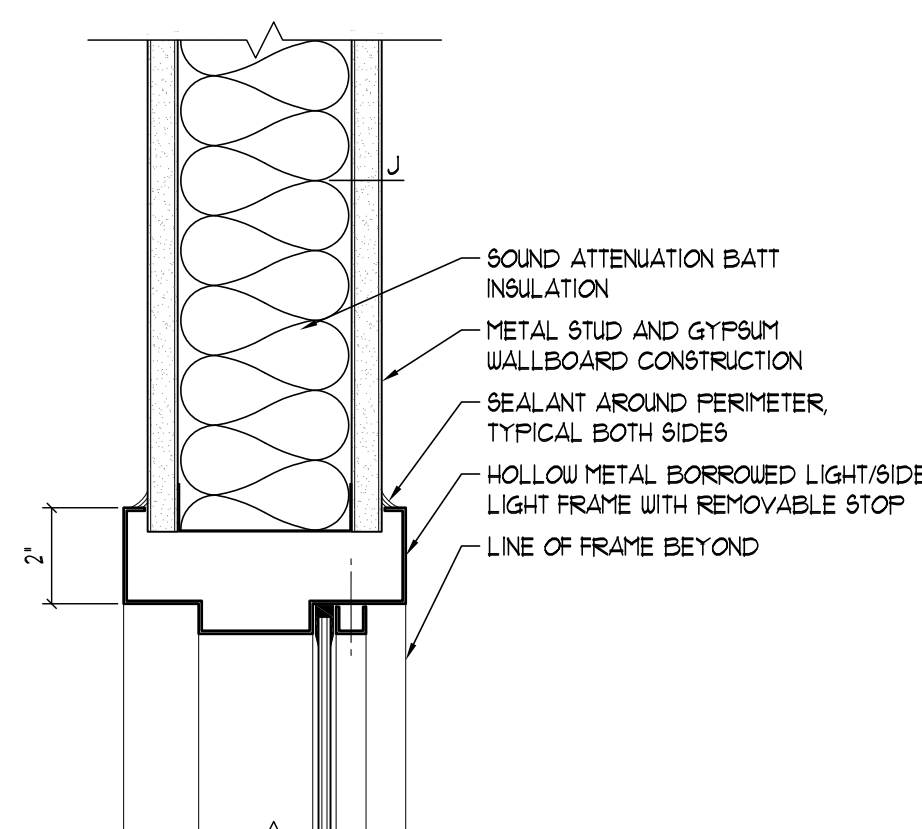
17 WALL TYPE J
JAMB - HOLLOW METAL
TYPICAL DOOR FRAME
SCALE: 3"=1'-0"



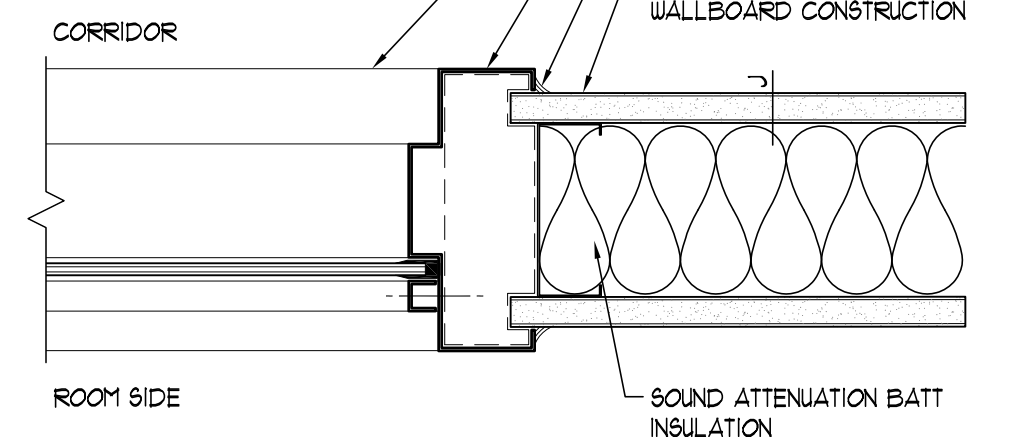
13 WALL TYPE J
HEAD - HOLLOW METAL
SIDELIGHT W/ INTEGRAL BLIND
SCALE: 3"=1'-0"



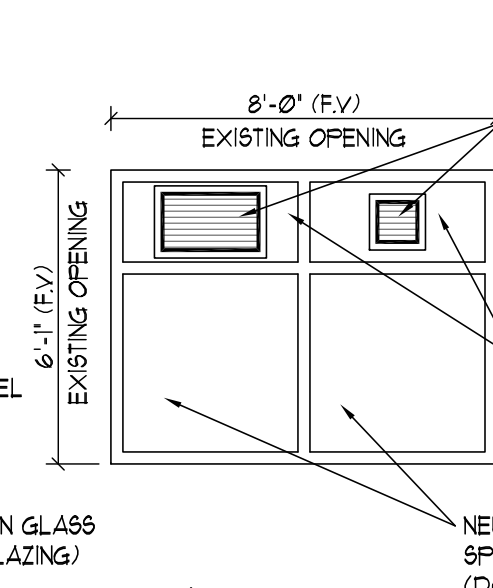
15 WALL TYPE J
JAMB - HOLLOW METAL
SIDELIGHT W/ INTEGRAL BLIND
SCALE: 3"=1'-0"



10 WALL TYPE J
HEAD - HOLLOW METAL
SIDELIGHT/BORROWED LITE
SCALE: 3"=1'-0"

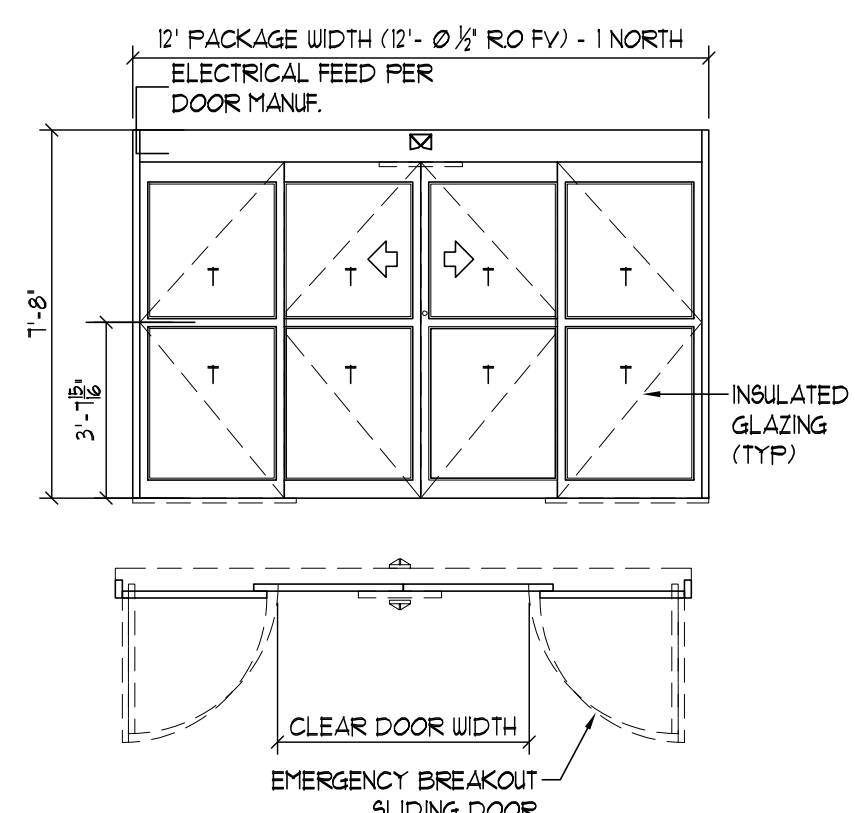


11 WALL TYPE J
JAMB - HOLLOW METAL
SIDELIGHT/BORROWED LIGHT
SCALE: 3"=1'-0"



E LOUVRES
SCALE: 1/4" = 1'-0"

CORRESPONDING ROOM NUMBER



P AUTOMATIC SLIDING DOOR
4 PANEL BI-PART

Scale: AS NOTED

		CONSULTANTS:	<div> The Estopinal Group <small>ARCHITECTS ENGINEERS INTERIORS</small> 820 Jordan Street, Suite 507 tel. 318.424.3700 Shreveport, LA 71101 fax 318.424.3764</div>	<div></div>	PROJECT MANAGERS AND ENGINEERS: <div><div>TNF A VETERAN OWNED COMPANY</div><div>3 EXECUTIVE COURT, UNIT 4 SOUTH BARRINGTON, IL 60010</div></div>	Drawing Title		Project Title		Project Number		Office of Construction and Facilities Management
						OPENING ELEVATIONS - 1 NORTH		RENOVATE ED & PRIMARY CARE Phase 1		667-10-100		
								Location		Building Number		
								SHREVEPORT VAMC 510 EAST STONER AVE		1N		
								Approved: Project Director		Drawing Number		
Date		Checked		Drawn		Dwg. 39 of 112		 Department of Veterans Affairs				
01/09/13		JAH		CSH								
Revisions:												
Date												