

three inches = one foot
one and one half inches = one foot
one inch = one foot
three quarters inch = one foot
one half inch = one foot
three eighths inch = one foot
one quarter inch = one foot
one eighth inch = one foot

ACTIVE: SHREVEPORT PROJECTS\ASH\015\CD ARCH\A-VASH\015-A1401-Opening Schedules.dwg 1-08-13 03:31:14 PM jpharris

Revisions: Date

Revisions: Date

Revisions: Date

Revisions: Date

Revisions: Date

Revisions: Date

Revisions: Date

Revisions: Date

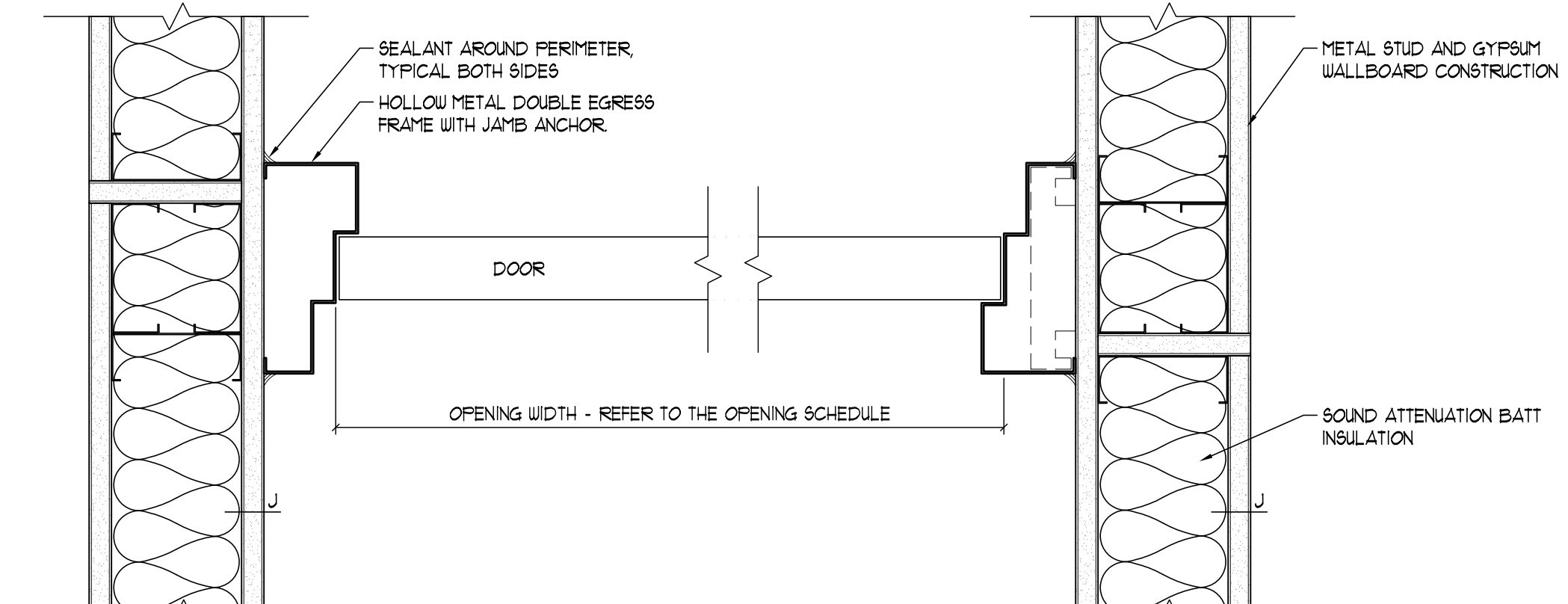
Revisions: Date

Revisions: Date

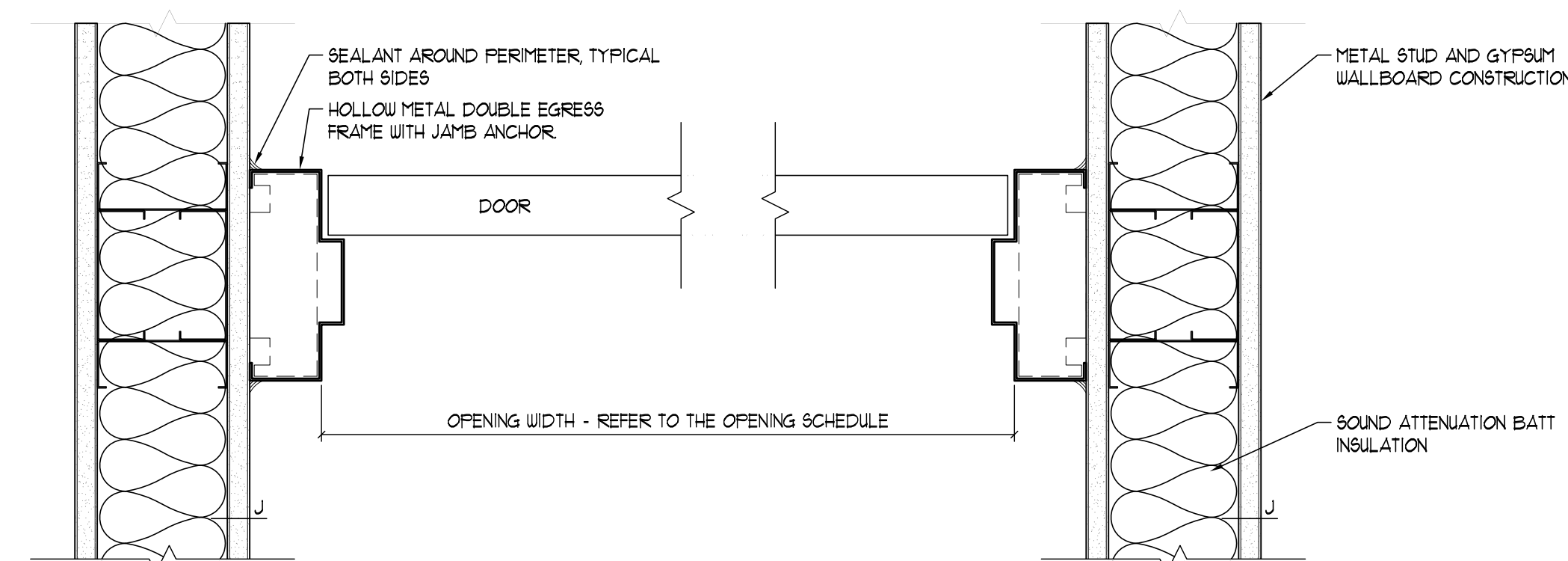
Revisions: Date

Revisions: Date

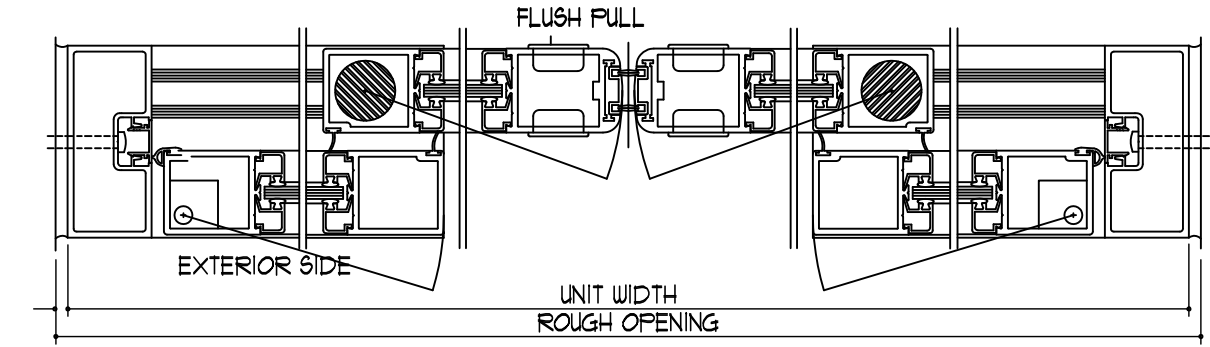
Revisions: Date



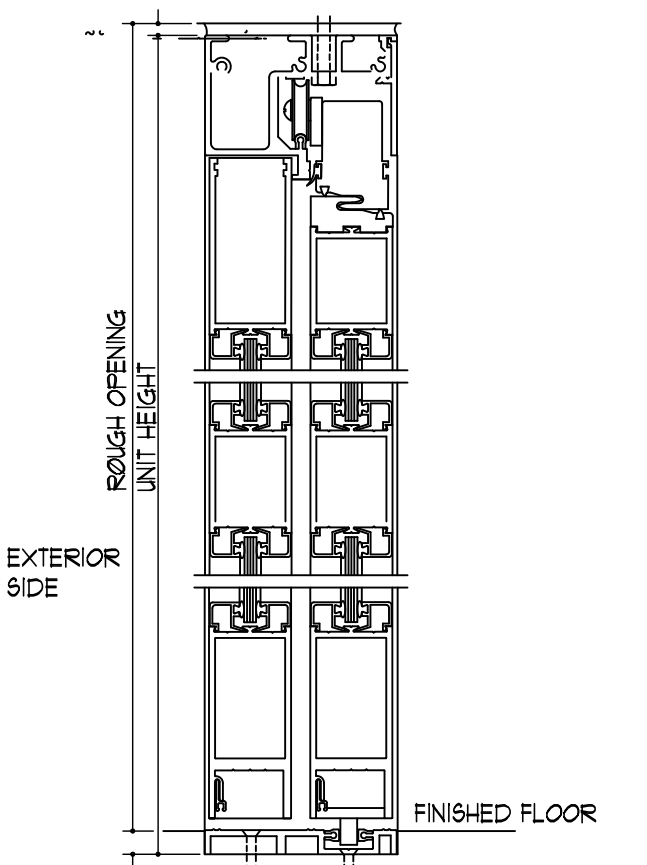
05 WALL TYPE J JAMB - HOLLOW METAL DOUBLE EGRESS FRAME - RATED
SCALE: 3"=1'-0"



04 WALL TYPE J JAMB - HOLLOW METAL DOUBLE EGRESS FRAME - NON-RATED
SCALE: 3"=1'-0"

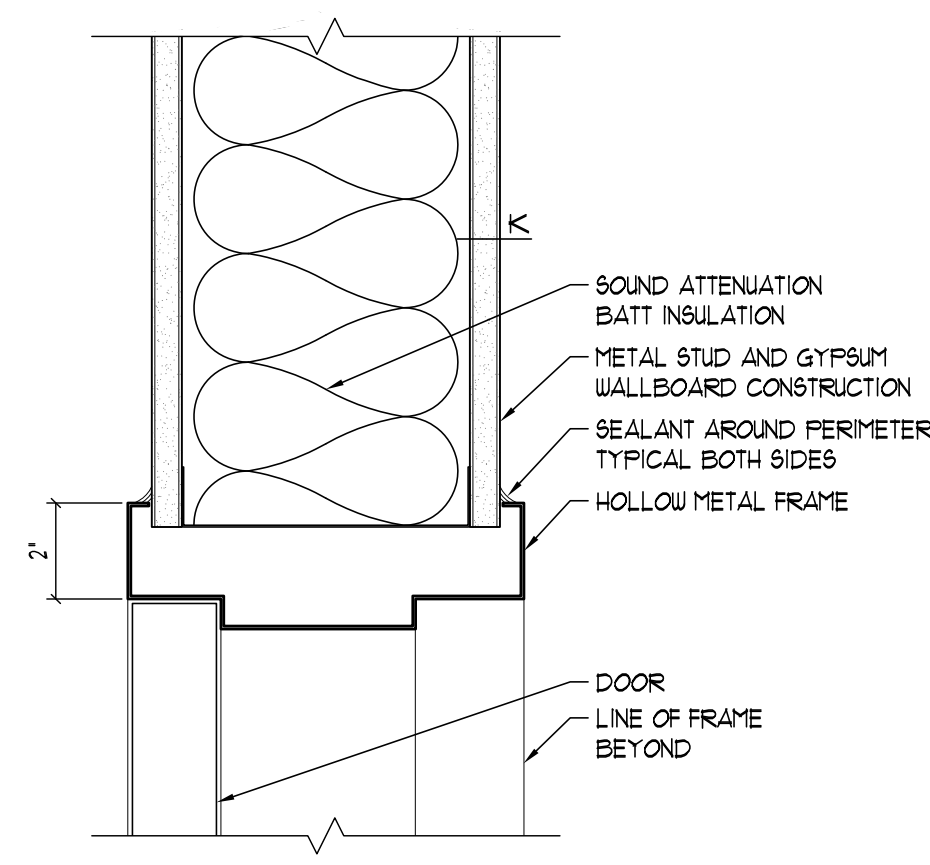


08 EXTERIOR SLIDING DOOR JAMB DETAIL
SCALE: 3"=1'-0"

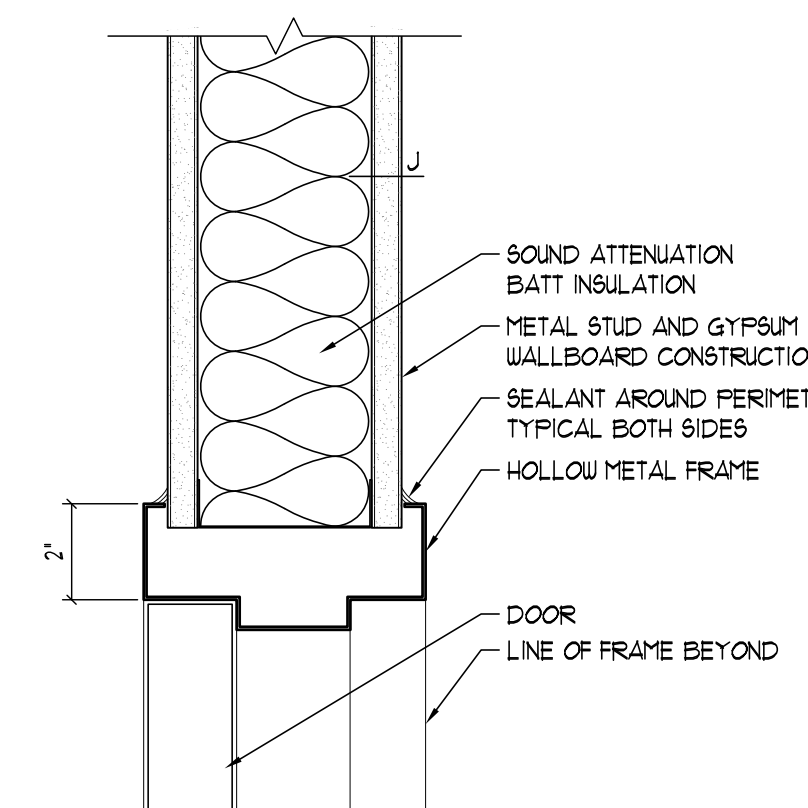


09 EXTERIOR SLIDING DOOR HEAD/SILL DETAIL
SCALE: 3"=1'-0"

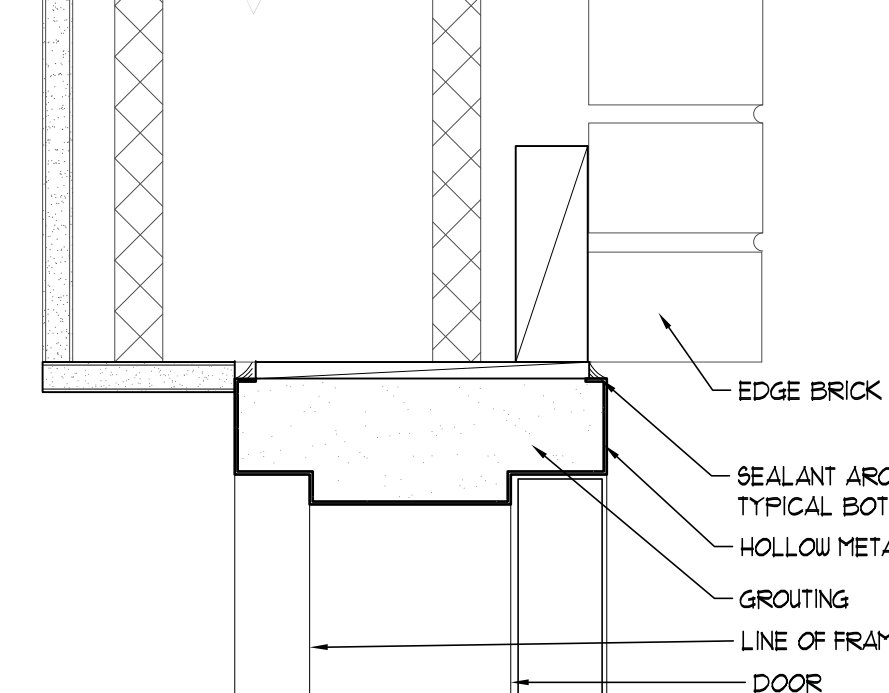
11 WALL TYPE K HEAD - HOLLOW METAL TYPICAL DOOR FRAME
SCALE: 3"=1'-0"



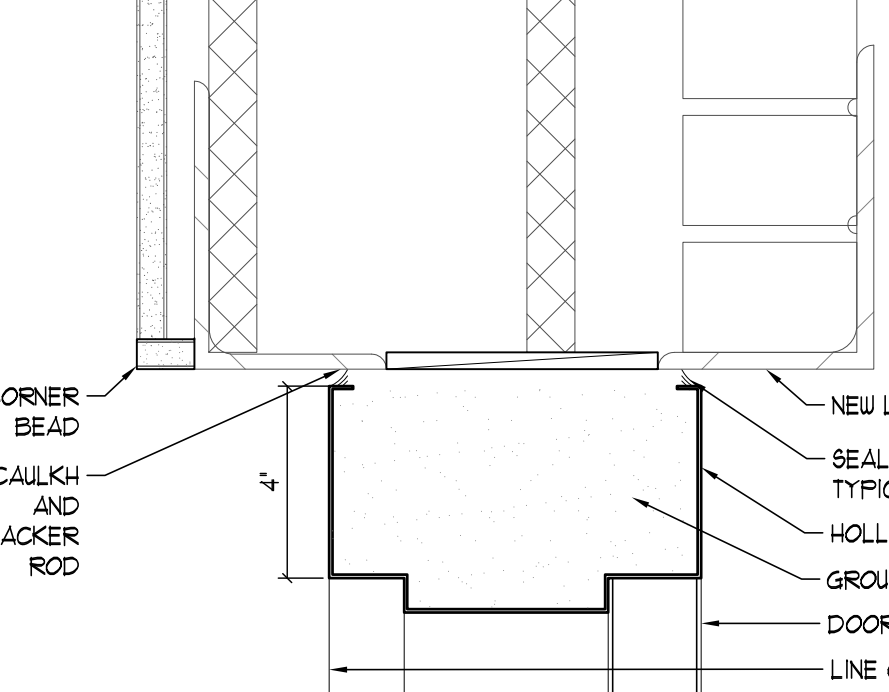
03 WALL TYPE J HEAD - HOLLOW METAL TYPICAL DOOR FRAME
SCALE: 3"=1'-0"



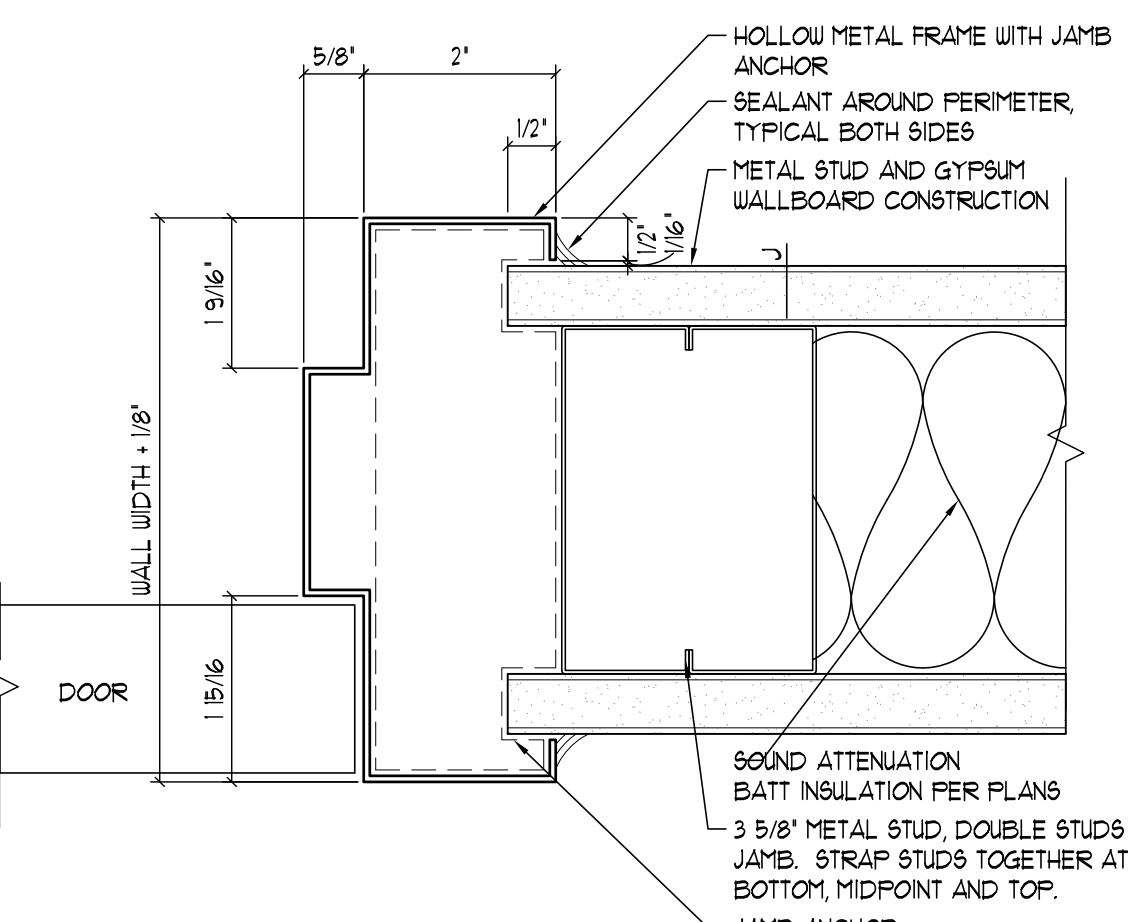
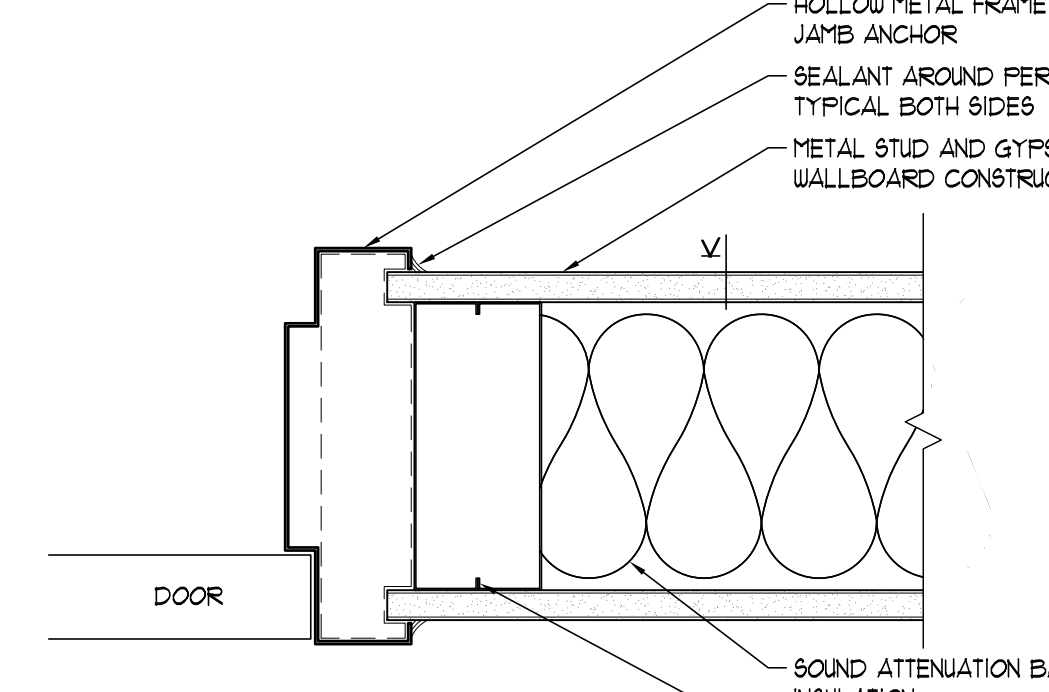
06 JAMB EXTERIOR FRAME
SCALE: 3"=1'-0"



07 HEAD EXTERIOR FRAME
SCALE: 3"=1'-0"

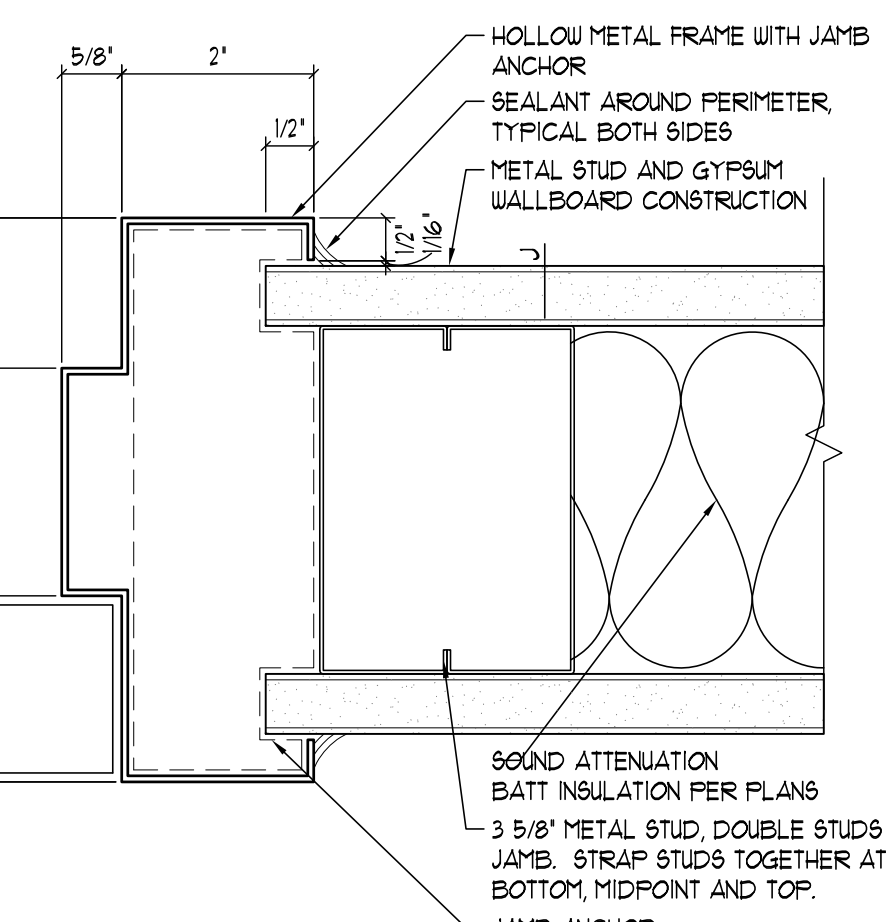


10 WALL TYPE K JAMB - HOLLOW METAL TYPICAL DOOR FRAME
SCALE: 3"=1'-0"



02 WALL TYPE J TYPICAL JAMB - HOLLOW METAL
SCALE: 6"=1'-0"

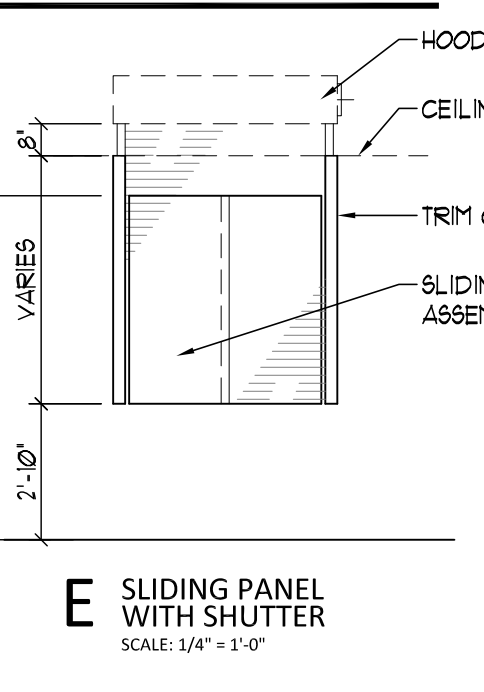
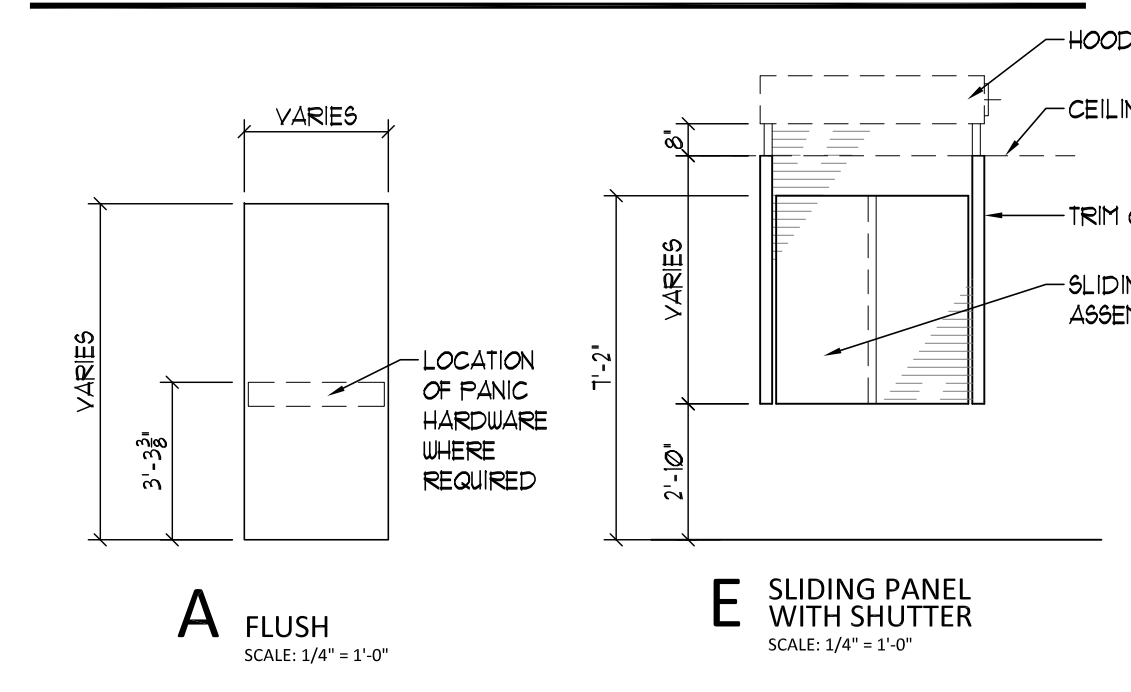
01 NOT USED
SCALE: 3"=1'-0"



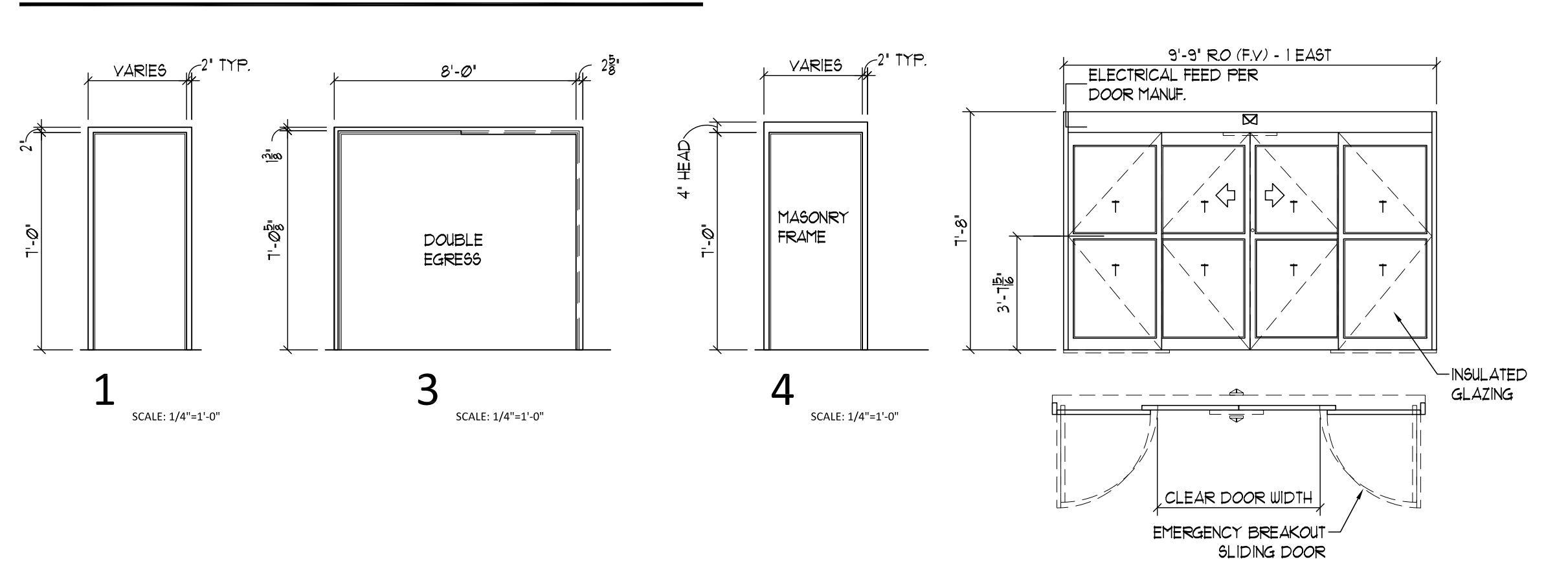
REFER TO PROJECT MANUAL/SPECIFICATIONS FOR HARDWARE SCHEDULES
** ALWAYS UNLOCKED FROM INSIDE, LOCKED FROM OUTSIDE AFTER HOURS. VERIFY FUNCTION WITH OWNER

OPENING SCHEDULE													
NUMBER	LABEL (MIN)	OPENING INFORMATION			DOOR SIZE/BORROWED LIGHT SIZE		FRAME		GLAZING	HDW SET	OPENING DETAILS		
		WxH	THICKNESS	ELEV.	MATL	ELEV.	MATL	GLAZING			HEAD	JAMB	SILL
IE1-A	--	3'-0" x 7'-0"	1 3/4"	A	SCW	I	HM	--	3E	03	02	02	--
IE1-B	--	3'-0" x 7'-0"	1 3/4"	A	SCW	I	HM	--	3E	03	02	02	--
IE2	--	3'-0" x 7'-0"	1 3/4"	A	SCW	I	HM	--	1L	03	02	02	--
IE3	--	3'-0" x 7'-0"	1 3/4"	A	SCW	I	HM	--	1L	03	02	02	--
IE4	--	3'-0" x 7'-0"	1 3/4"	A	SCW	I	HM	--	1L	03	02	02	--
IE5	--	3'-0" x 7'-0"	1 3/4"	A	SCW	I	HM	--	2G	03	02	02	--
IE6	--	3'-0" x 7'-0"	1 3/4"	A	SCW	I	HM	--	1L	03	02	02	--
IE6A-A	--	3'-0" x 7'-0"	1 3/4"	A	SCW	I	HM	--	4B	03	02	02	--
IE6A-B	--	3'-0" x 7'-0"	1 3/4"	A	SCW	I	HM	--	4B	03	02	02	--
IE7	--	3'-0" x 7'-0"	1 3/4"	A	SCW	I	HM	--	1L	03	02	02	--
IE8	--	3'-0" x 7'-0"	1 3/4"	A	SCW	I	HM	--	1L	03	02	02	--
IE9	--	3'-0" x 7'-0"	1 3/4"	A	SCW	I	HM	--	1L	03	02	02	--
IE10	--	3'-0" x 7'-0"	1 3/4"	A	SCW	I	HM	--	1L	03	02	02	--
IE11	--	3'-0" x 7'-0"	1 3/4"	A	SCW	I	HM	--	4P	03	02	02	--
IE12	45 MIN	3'-0" x 7'-0"	1 3/4"	A	SCW	I	HM	--	9H-3C	03	02	02	CII
IE13	--	3'-0" x 7'-0"	1 3/4"	A	SCW	I	HM	--	1L	03	02	02	--
IE14	--	3'-0" x 7'-0"	1 3/4"	A	SCW	I	HM	--	1L	03	02	02	--
IE15	--	3'-0" x 7'-0"	1 3/4"	A	SCW	I	HM	--	1L	03	02	02	--
IE16	--	3'-0" x 7'-0"	1 3/4"	A	SCW	I	HM	--	1L	03	02	02	--
IE17	--	3'-0" x 7'-0"	1 3/4"	A	SCW	I	HM	--	1L	03	02	02	--
IE18	--	3'-0" x 7'-0"	1 3/4"	A	SCW	I	HM	--	4E	03	02	02	--
IE19	--	3'-0" x 7'-0"	1 3/4"	A	SCW	I	HM	--	3E	03	02	02	--
IE20	45 MIN	3'-0" x 7'-0"	1 3/4"	A	SCW	I	HM	--	5D	03	02	02	CII
IE21	--	3'-0" x 7'-0"	1 3/4"	A	SCW	I	HM	--	1L	03	02	02	--
IE22	45 MIN	3'-0" x 7'-0"	1 3/4"	A	SCW	I	HM	--	9H-3C	03	02	02	CII
IE23	--	3'-0" x 7'-0"	1 3/4"	A	SCW	I	HM	--	1L	03	02	02	--
IE24	--	3'-0" x 7'-0"	1 3/4"	A	SCW	I	HM	--	2G	03	02	02	--
IE25	--	3'-0" x 7'-0"	1 3/4"	A	SCW	I	HM	--	1L	03	02	02	--
IE26-A	--	3'-6" x 7'-0"	1 3/4"	A	SCW	I	HM	--	2G	03	02	02	--
IE26-B	--	3'-6" x 7'-0"	1 3/4"	A	SCW	I	HM	--	2G	03	02	02	--
IE27	--	3'-0" x 7'-0"	1 3/4"	A	SCW	I	HM	--	3E	03	02	02	--
IE28	--	3'-0" x 7'-0"	1 3/4"	A	SCW	I	HM	--	3E	03	02	02	--
IE29	--	3'-0" x 7'-0"	1 3/4"	A	SCW	I	HM	--	3E	03	02	02	--
IE30	--	3'-0" x 7'-0"	1 3/4"	A	SCW	I	HM	--	1L	03	02	02	--
IE60	--	3'-0" x 7'-0"	1 3/4"	A	SCW	I	HM	--	4B	03	02	02	--
300B	45 MIN	3'-6" x 7'-0"	1 3/4"	A	SCW	4	HM	--	E2	07	06	--	--
300C	--	3'-0" x 7'-0"	1 3/4"	A	SCW	I	HM	--	5D	03	02	02	--
300E	--	3'-6" x 7'-0"	1 3/4"	A	SCW	I	HM	--	8E	03	02	02	CII
300F	--	3'-0" x 7'-0"	1 3/4"	A	SCW	I	HM	--	8E	03	02	02	CII
300G	--	3'-6" x 7'-0"	1 3/4"	A	SCW	I	HM	--	8E	03	02	02	CII
300A-A	--	9'-0" x 7'-0"	--	MFGR	AL	0	AL	T	--	03	08	--	FV, RO, ASL
300A-B	--	9'-0" x 7'-0"	--	MFGR	AL	0	AL	T	--	03	08	--	FV, RO, ASL

DOOR ELEVATIONS:



FRAME ELEVATIONS:



GENERAL OPENING NOTES:

- A. ALL FRAMES ARE TO BE WELDED CONSTRUCTION.
- B. PROVIDE DOUBLE STRUCTURAL STUDS AT JAMBS WITH OPENINGS GREATER THAN 4'-0".
- C. REFER TO THE PARTITION TYPES FOR ADDITIONAL INFORMATION.
- D. PROVIDE FULL HEIGHT STRUCTURAL STUDS TO THE STRUCTURAL DECK ABOVE AT ALL FRAMED OPENINGS.
- E. PROVIDE SOUND ATTENUATION BATT INSULATION WHERE INDICATED ON THE FLOOR PLANS.
- F. ALL FRAMES ARE TO BE GROUTED SOLID.
- G. ALL FRAMES ARE TO BE SPOT GROUTED AT THE JAMB ANCHORS.
- H. PROVIDE MINIMUM THREE JAMB ANCHORS PER JAMB SIDE.
- I. ALL RATED DOORS SHALL INCLUDE RATED HARDWARE AND FRAMES.
- J. PROVIDE DOOR ARMOR ON PUSH SIDE AS INDICATED ON SCHEDULE. ARMOR SHALL BE ADHERED WITH SELF-ADHESIVE.
- K. MAGNETIC HOLD OPENS SHALL BE TIED INTO FIRE ALARM SYSTEM AND SUPPLIED BY VENDOR.
- L. ACCESS CONTROL AND POWER SUPPLY SHALL BE PROVIDED BY VENDOR.
- M. PROVIDE SILENCERS FOR ALL DOOR FRAMES.
- N. ALL DOORS WITH MANUAL FLUSH BOLTS SHALL HAVE DUST PROOF STRIKE.
- O. REFER TO ARCHITECTURAL FLOOR PLANS FOR LOCATIONS OF CARD READERS AND PUSH PADS THAT SHALL BE PROVIDED FOR AUTOMATIC DOORS.

COMMON REMARKS FOR THE OPENING SCHEDULE:

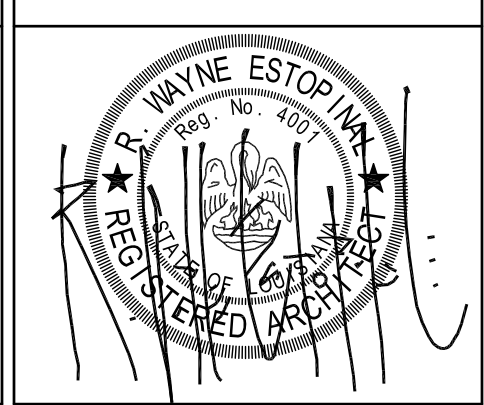
- ACCORDION DOOR
- ACOUSTICAL PANEL
- AUTOMATIC
- BI-FOLD
- BI-PARTING
- BORROWED LIGHT
- BUTT GLAZED
- CARD READER
- COUNTER SHUTTER
- DOUBLE DOORS
- DOUBLE EGRESS DOORS
- DUTCH DOORS
- EMERGENCY STRIKE
- ENTRANCE SLIDER
- EXISTING TO BE RELOCATED
- EXISTING TO REMAIN
- FIRE CURTAIN
- FIRE SHUTTER
- FIXED PANEL
- HOLD OPEN(S)
- ICU SLIDER
- INSULATED
- KEY PAD
- LEAD LINED
- MOTORIZED
- OVERHEAD COILING DOOR
- OVERHEAD SECTIONAL DOOR
- OVERHEAD SHUTTER
- PAINT
- PASS-THRU
- PUSH PAD
- RF SHIELDING
- REVOLVING DOOR
- SCREEN
- SCRELIGHT
- SLIDING GLASS
- SLOPED
- STORMFRONT
- TIE INTO FIRE ALARM SYSTEM
- TIE INTO SECURITY SYSTEM
- TRIPLE PANEL
- WON DOOR

OPENING SCHEDULE LEGEND:

- NOTE: NOT ALL HARDWARE LISTED IN THE LEGEND IS UTILIZED IN THIS PROJECT.
- DOOR: AL ALUMINUM
- ASL AUTO-SLIDER
- GL GLAZING REFER TO GLAZING
- LEGEND
- HM HOLLOW METAL, PAINT
- SCW SOLID CORE WOOD, RATED OR NON-RATED
- IG GALVANIZED
- FRAME: AL ALUMINUM
- HM HOLLOW METAL
- GLAZING: C ETCHED/FROSTED
- F FIRE RATED
- P PLASTIC (SUICIDE RESISTANT)
- R ARCHITECTURAL RESIN
- S SPANDREL
- T TEMPERED GLASS
- LG LAMINATED GLASS
- CONTROL: C1 CLOSER STANDARD
- C2 CLOSER W/ MAGNETIC HOLD OPENS
- C3 CLOSER W/ DELAYED ACTION
- C4 WALL STOP
- C5 FLOOR STOP
- C6 OVERHEAD STOP
- C7 MAGNETIC LOCK
- C8 ELECTRIC STRIKE
- C9 AUTOMATIC DOOR OPERATOR
- C10 DOOR OPERATOR FLUSH PADS
- C11 ACCESS CONTROL CARD READER
- C12 COORDINATOR
- C13 CORE STRIKE AND RESCUE STOP
- C14 CLOSER CONCEALED
- C15 CLOSER W/ INTEGRAL STOP
- C16 ROLLER BUMPER
- C17 DELAYED EGRESS SYSTEM
- SEAL: S1 WEATHER STRIPPING
- S2 THRESHOLD
- S3 ASTRAGAL
- S4 AUTOMATIC DOOR BOTTOM
- S5 PERIMETER GASKETING
- S6 DRAIN STRIP
- S7 SUEEP
- MISC ABBREVIATIONS: ETR EXISTING TO REMAIN
- N/A NOT APPLICABLE
- RV FIELD VERIFY (GO TO FIELD VERIFY PRIOR TO FABRICATION)
- RO ROUGH OPENING
- REMARKS: 1. ANTI LIGATURE HARDWARES
- 2. INSULATED AND GALVANIZED DOOR AND FRAME
- 3. ADD COAT HOOK
- 4. HARDWARE BY DOOR MANUFACTURER
- 5. ADD SMOKE & DRAFT CONTROL KIT
- 6. W/ POSITIVE LATCHING
- 7. NON-REMOVABLE PIN
- 8. GALVANIZED FRAME
- 9. PROVIDE ONE LATCH FOR BOTTOM LEAF
- 10. TOP LEAF LATCHED TO BOTTOM LEAF WITH SURFACE BOLT
- 11. PROVIDE DOOR PROTECTION ON BOTH SIDES
- 12. KEYED BOTH SIDES
- 13. PROVIDE INTEGRAL BLINDS IN VISION PANEL

CONSULTANTS:

The Estopinal Group
820 Jordan Street, Suite 507
Shreveport, LA 71101
tel. 318.424.3700
fax 318.424.3764



PROJECT MANAGERS AND ENGINEERS:

TNF A VETERAN OWNED COMPANY
3 EXECUTIVE COURT, UNIT 4
SOUTH BARRINGTON, IL 60010

Drawing Title
OPENING SCHEDULE - I EAST
Approved: Project Director

Project Title
RENOVATE ED & PRIMARY CARE
Phase 2
Location
SHREVEPORT VAMC
510 EAST STONER AVE
Date
01/09/13
Checked
JAH
Drawn
CSH

Project Number
667-10-100
Building Number
1E
Drawing Number
A14.E1
Dwg. 40 of 112

Office of Construction and Facilities Management
Department of Veterans Affairs