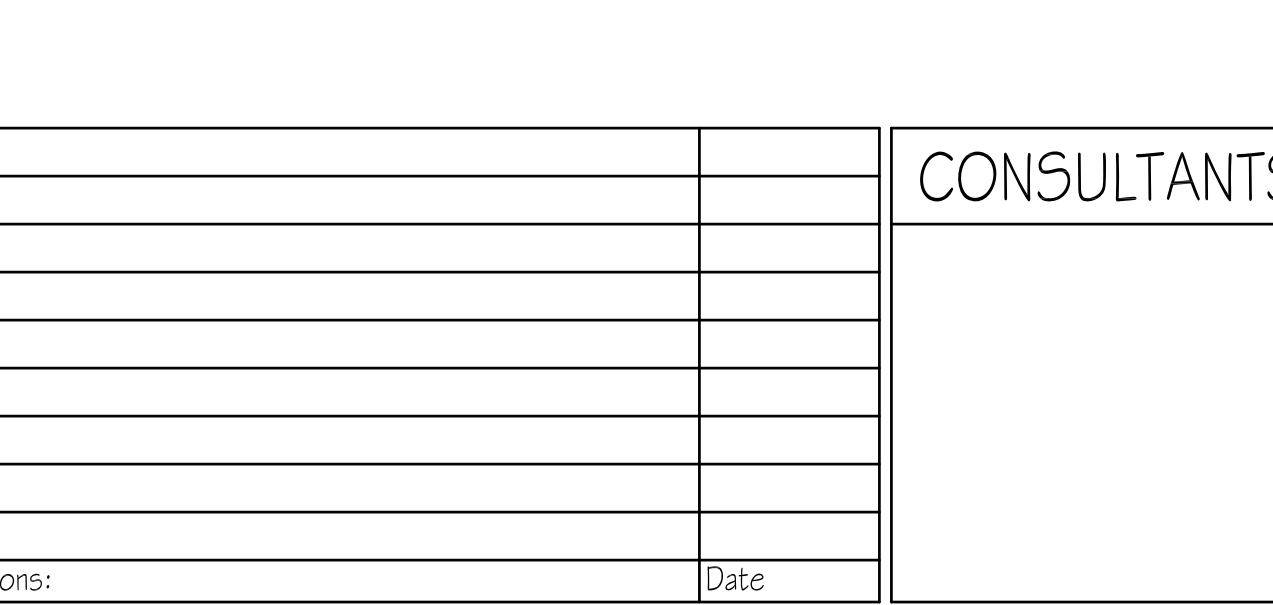
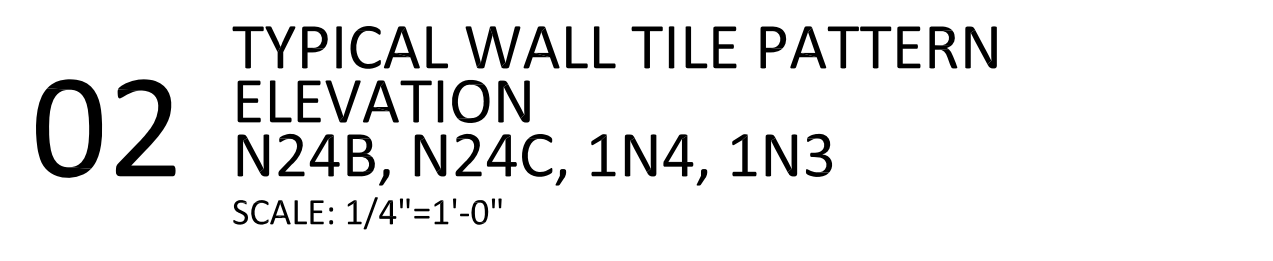
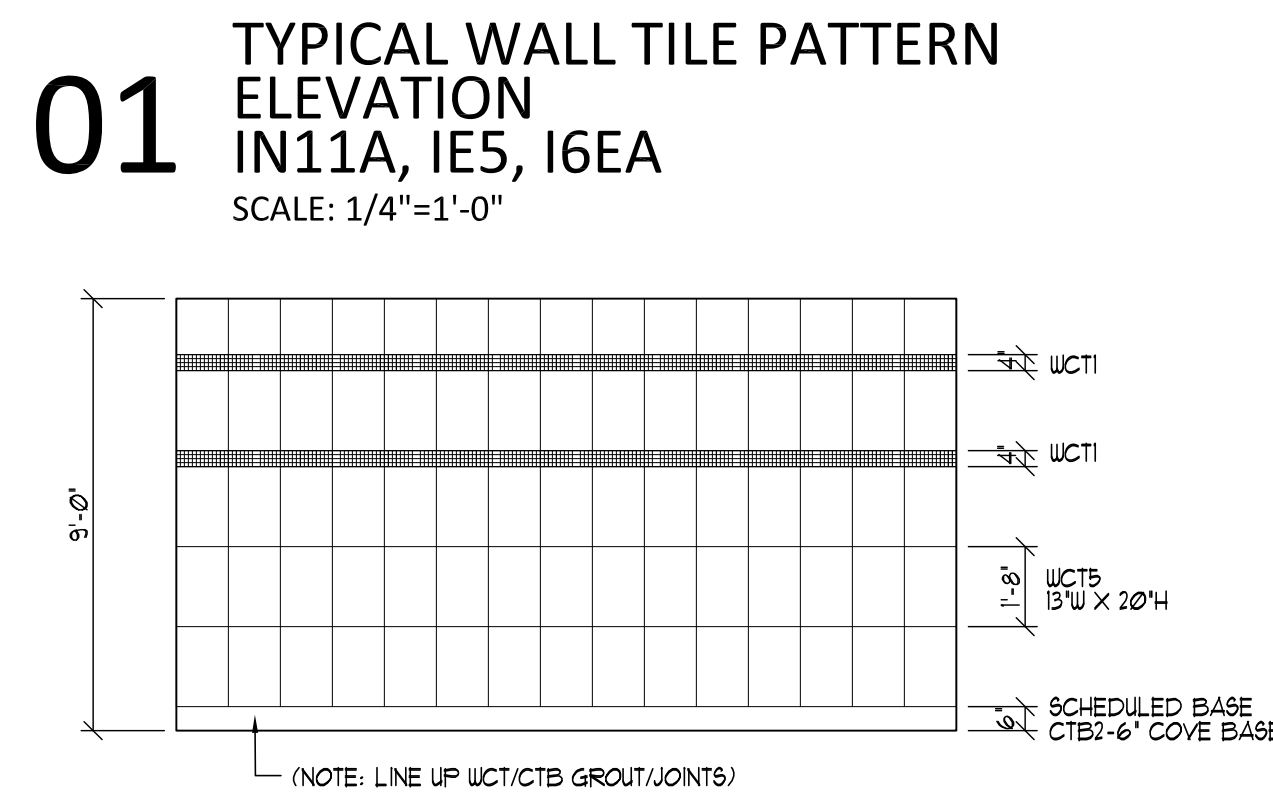
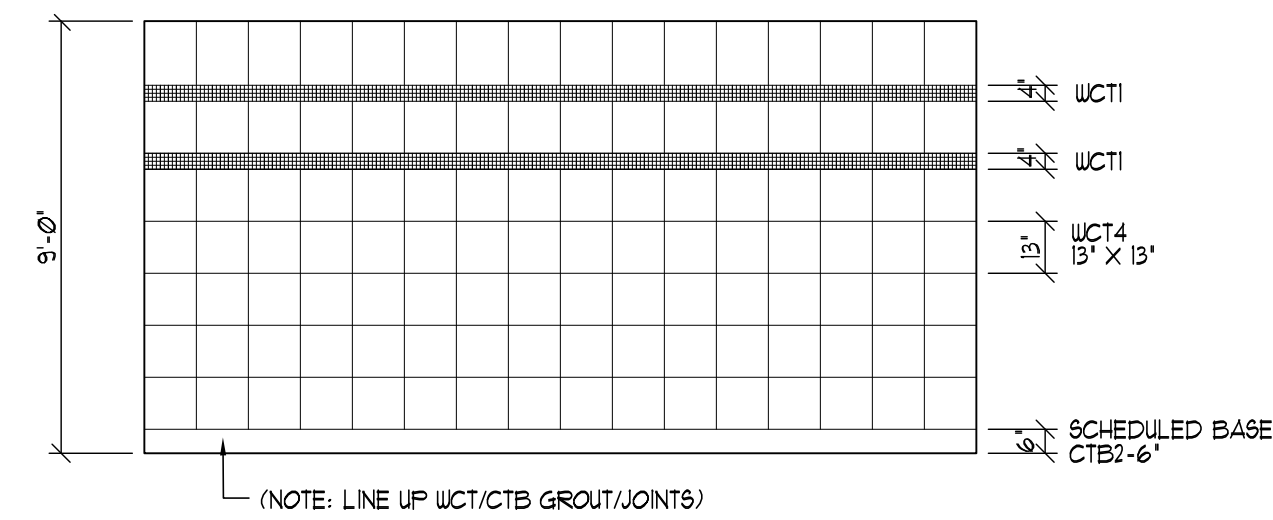


ROOM FINISH SCHEDULE - NORTH - EMERGENCY						
ROOM NUMBER	ROOM NAME	FLOOR	BASE MATL	WALLS	CEILING	REMARKS
IN6	WAITING	LV2	RB1/ICB1	FT2/UCT12	APC1/RGB	CG1, CG1 ① ② ⑥
100B	CORRIDOR	LV2	RB1	FT12/UCT12	APC1/RGB	CG1 ① ④
IN1	REGISTRATION	LV2	RB1	FT12	APC1/RGB	FLI CABINET, FL2 COUNTERTOP, S91, CG1 ① ④
100A	VESTIBULE	UCM1	RB2	PT2/SUI	RGB1	CG1 ③
200B	DECON	CT3	CTB3	UCT6	ERGB	N/A
200A	AMBULANCE VESTIBULE	UCM1	RB2	PT2	RGB	④
IN21	TRIAGE 1	LV2	RB3	PT13/SUI	APC1/RGB	FLI CABINET, S91 COUNTERTOP, CG1 ②3
IN22	TRIAGE 2	LV2	RB3	PT14/SUI	APC1/RGB	FLI CABINET, S91 COUNTERTOP, CG1 ②3
100C	CORRIDOR	LV2	RB1	PT1	APC1/RGB	CG1/HR ①
IN23	SOILED UTILITY	USV1	RB3	EPT2/SUI	APC1/ERGB	FLI CABINET, S91 COUNTERTOP, CG1 ⑥
IN20	MEDS	LV2	RB3	PT14/SUI	APC1, RGB	FLI CABINET, S91 COUNTERTOP, ⑥
200C	CORRIDOR	LV2	RB1	PT12/SUI	APC1, RGB	CG1, SUI ① ⑥
IN8	LIFE SUPPORT 8	USV1	RB3	PT13/SUI	APC2/RGB	FLI CABINET, S91 COUNTERTOP, CG1, SUI ②3
IN9	LIFE SUPPORT 1	USV1	RB3	PT14/SUI	APC2/RGB	FLI CABINET, S91 COUNTERTOP, CG1, SUI ②3
IN10	LIFE SUPPORT 6	USV1	RB3	PT13	APC2/RGB	FLI CABINET, S91 COUNTERTOP, CG1, SUI ②3
IN11A	TLT-PT	CT1	CTB 2	UCT14/EPT2	ERGB	⑩
IN11	LIFE SUPPORT 5	USV1	RB3	EPT4/SUI	ERGB	FLI CABINET, S91 COUNTERTOP, SUI ②3
IN12	LIFE SUPPORT 4	USV1	RB3	PT13/SUI	APC2/RGB	FLI CABINET, S91 COUNTERTOP, CG1, SUI ②3 ⑤
IN13	LIFE SUPPORT 3	USV1	RB3	PT14/SUI	APC2/RGB	FLI CABINET, S91 COUNTERTOP, CG1, SUI ②3 ⑤
IN14	LIFE SUPPORT 2	USV1	RB3	PT13/SUI	APC2/RGB	FLI CABINET, S91 COUNTERTOP, CG1, SUI ②3 ⑤
IN15	LIFE SUPPORT 1	USV1	RB3	EPT4/SUI	ERGB	FLI CABINET, S91 COUNTERTOP, SUI ②3
200D	CORRIDOR	LV2	RB1	FT12	APC1/RGB	CG1 ①
IN5	NURSE STATION	LV1	RB3	PT12	APC1/RGB	FLI CABINET, FL2 COUNTERTOP, S91 ① ④ ⑥ CG1
IN16	CLEAN SUPPLY	LV2	RB3	PT11/SUI	APC1	CG1 ①
IN17	LIFE SUPPORT 9	USV1	RB3	EPT3/SUI	ERGB	②9 CG1, UG1
IN18	LIFE SUPPORT 10	USV1	RB3	EPT4/SUI	ERGB	②9 CG1
200E	CORRIDOR	LV2	RB1	PT12/SUI	APC1/RGB	UG1, S91 COUNTERTOP, CG1 ⑤
200F	CORRIDOR	LV2	RB1	PT12/SUI	APC1	CG1 ⑤
N24A	ELEC.	SC1	RB3	PT1	OPEN	N/A
100F	LINEN	N/A	N/A	N/A	N/A	N/A
N24B	TLT-MALE	CT2	CTB 2	UCT15/EPT2	APC1	③
N24C	TLT-FEMALE	CT2	CTB 2	UCT15/EPT2	APC1	③
IN24D	WORK	LV1	RB1,3	PT 1,3	APC1	FLI CABINET, FL2 COUNTERTOP ① ②9
IN24	CORRIDOR	LV2	RB1,3	PT1/SUI	APC1/RGB	FLI CABINET, FL2 COUNTERTOP, CG1 ⑤ ④ ①
IN24E	FAST TRACK	LV2	RB1	PT3/SUI	APC1	CG1 ② ① UG1
IN24F	FAST TRACK	LV2	RB1	PT3/SUI	APC1	CG1 ② ① UG1
IN24G	FAST TRACK	LV2	RB1	PT3/SUI	APC1	CG1 ② ① UG1
100D	CORRIDOR	LV2	RB1	FT12	APC1/RGB	CG1, HRI ① ⑥
IN5	STORAGE	LV2	RB3	PT11/SUI	APC1	②9
IN4	TLT-PUB	CT2	CTB 2	UCT 15	APC1	③ ⑤
IN3	TLT-PUB	CT2	CTB 2	UCT 15	APC1	③
IN2	TELEPHONE	N/A	N/A	N/A	N/A	N/A
IN24H	BREAK	LV1	RB3	PT1,3	APC 1/RGB	FLI CABINET, FL2 COUNTERTOP, CG1
IN25	HKFP	SC1	RB3	EPT1	ERGB	FLI CABINET ⑤
1U27D	MEDICAL DIRECTOR	LV1	RB3	PT2	APC 1	CR1 ②
1U27C	NURSE MANAGER	LV1	RB3	PT2	APC 1	CR1 ②
1U27B	STORAGE	LV2	RB3	PT11/SUI	APC 1	②9
1U27A	OFFICE/STORAGE	LV1	RB3	PT2	APC 1	CR1 ②
1U27	CORRIDOR	LV1	RB1	PT1	APC 1	N/A
1U26D	POLICE	LV1	RB3	PT2	APC 1	CR1, CG1 ②
IN1A	CORRIDOR	LV2	RB1	PT2/SUI	APC 1	③
100E	CORRIDOR	LV2	RB1	PT1	APC 1	CG1, HRI



## GENERAL INTERIOR DESIGN NOTES:

- ALL HOLLOW METAL DOOR FRAMES SHALL BE PAINTED PT5 UNLESS OTHERWISE NOTED.
- PROVIDE TRANSITION STRIP AT ALL FLOORING MATERIAL JUNCTURES. REFER TO DIAN AND IDIAE FLOORING TRANSITIONS. CENTER OF TRANSITION STRIP TO BE LOCATED UNDER CENTER OF DOOR.
- REFER TO FLOOR FINISH PLANS FOR ACCENT PAINT LOCATIONS.
- ALL WINDOW SILLS SHALL BE S92, UNLESS OTHERWISE NOTED.
- NOT USED.
- ALL FLOORING MATERIALS TO EXTEND TO WALL UNDER OPEN COUNTERS.
- INDICATES WALL PROTECTION LOCATION (REFER TO A4 SERIES).
- PAINT FACE OF BULKHEADS TO MATCH ADJACENT WALL COLOR UNLESS NOTED OTHERWISE.
- PROVIDE BLOCKING AS NEEDED FOR ALL WINDOW TREATMENTS.
- INSTALL HANDRAIL AT 34" TO TOP OF RAIL.
- INSTALL CORNER GUARDS ABOVE SCHEDULED BASE TO HEIGHT AS INDICATED BY PRODUCT.
- DOOR SPECIES AND COLOR: MARSHFIELD DOOR SYSTEMS, BIRCH NATURAL, ROTARY QT, HONEY 26-95 (VA STANDARD).
- ALL MIRRORS SHALL BE INSTALLED ON TOP OF TILE.

## REMARKS & KEYNOTES

- REFER TO REFLECTED CEILING PLAN FOR ACCENT PAINT LOCATIONS AT BULKHEADS. CHAIR RAIL SHALL BE INSTALLED ACCORDING TO SPECIFIED FURNITURE PER AREA. HEIGHTS WILL VARY. OWNER TO PROVIDE INSTALLATION HEIGHTS.
- PROVIDE UCT ON ALL WALLS. REFER TO 02/DIN FOR TILE PATTERN AND DIMENSIONS.
- REFER TO INTERIOR ELEVATIONS FOR CASEWORK FINISH INFORMATION.
- PROVIDE SUI 4'-0" ABOVE SCHEDULED BASE. PAINT SUI AS SPECIFIED ABOVE TO CEILING LINE.
- PATCH AND MATCH EXISTING FINISHES WHERE NEW FINISHES ARE REQUIRED. EXTENT OF FINISHES.
- PROVIDE SUI AT ALL WALLS. REFER TO ELEVATION 10/AIN FOR DIMENSIONING.
- PROVIDE SUI AT ALL WALLS. REFER TO ELEVATION 10/AIN FOR DIMENSIONS.
- REFER TO 24/AIN FOR COLUMN WRAP FINISHES AND DETAILS.
- PROVIDE SUI 4'-0" ABOVE SCHEDULED BASE. PT1 ABOVE TO CEILING LINE. WALL PROTECTION INSTALLED BELOW WINDOW SILL WHERE APPLICABLE.
- PROVIDE UCT AT UET WALL ONLY. PAINT ALL OTHER WALLS. EPT2. REFER TO 02/DIN FOR THE PATTERN AND DIMENSIONS.
- PROVIDE UCT 15 AT UET WALL ONLY. PAINT ALL OTHER WALLS. EPT2. REFER TO 02/DIN FOR THE PATTERN AND DIMENSIONS.
- REFER TO 03/DIN AND 03/DIEI FOR WALL ELEVATION AND FINISHES. PROVIDE SOFTENED EDGE AT OUTSIDE CORNERS.
- REFER TO 04/DIN FOR WALL ELEVATION AND FINISHES. PROVIDE SOFTENED EDGE AT OUTSIDE CORNERS.
- INSTALL SUI TO A HEIGHT OF 3'-0" ABOVE SCHEDULED BASE. PT1 ABOVE TO CEILING LINE. (IF INSTALLED ADJACENT TO CASEWORK SUI FLUSH WITH TOP OF BACKSPLASH).
- PROVIDE SUI TO A HEIGHT OF 4'-0" ABOVE SCHEDULED BASE. EPT2 TO CEILING LINE.
- ALL WALLS SHALL RECEIVE PT1/SUI. REFER TO 2U/AIN FOR SUI INSTALLATION HEIGHT.
- REFER TO ELEVATION 04/DIN AND 04/DIEI FOR TILE PATTERN AND DIMENSIONS.
- NOT USED.
- PROVIDE SUI AS INDICATED ON A4 SERIES. REFER TO ELEVATIONS FOR DIMENSIONS. PAINT AS SCHEDULED ABOVE WALL PROTECTION TO CEILING LINE.
- NOT USED.
- PROVIDE SUI AS INDICATED ON A4/AIN. PT ABOVE AS SPECIFIED TO CEILING LINE. WALL PROTECTION INSTALLED BELOW WINDOW SILL.
- PROVIDE RB1 ON FACE AND SIDE OF WALL. TERMINATE IN CORNER RB3 AT CASEWORK.
- PROVIDE SUI ABOVE SCHEDULED BASE. REFER TO ELEVATION 34/AIN FOR SUI HEIGHT. PT3 ABOVE TO CEILING LINE.
- INSTALL SUI 4'-0" ABOVE SCHEDULED BASE. PT1 ABOVE TO CEILING LINE. PROVIDE SUI ABOVE SCHEDULED BASE TO A HEIGHT OF 4'-0" AT INDICATED AREAS. PT2 ABOVE TO CEILING LINE.
- HALF WALL CAPPED WITH S91.
- PROVIDE UT7 BETWEEN NEW WALL AND EXISTING WINDOW. CONTRACTOR TO MATCH FACILITIES EXISTING WINDOW SHADES.

## FLOORING TRANSITIONS

