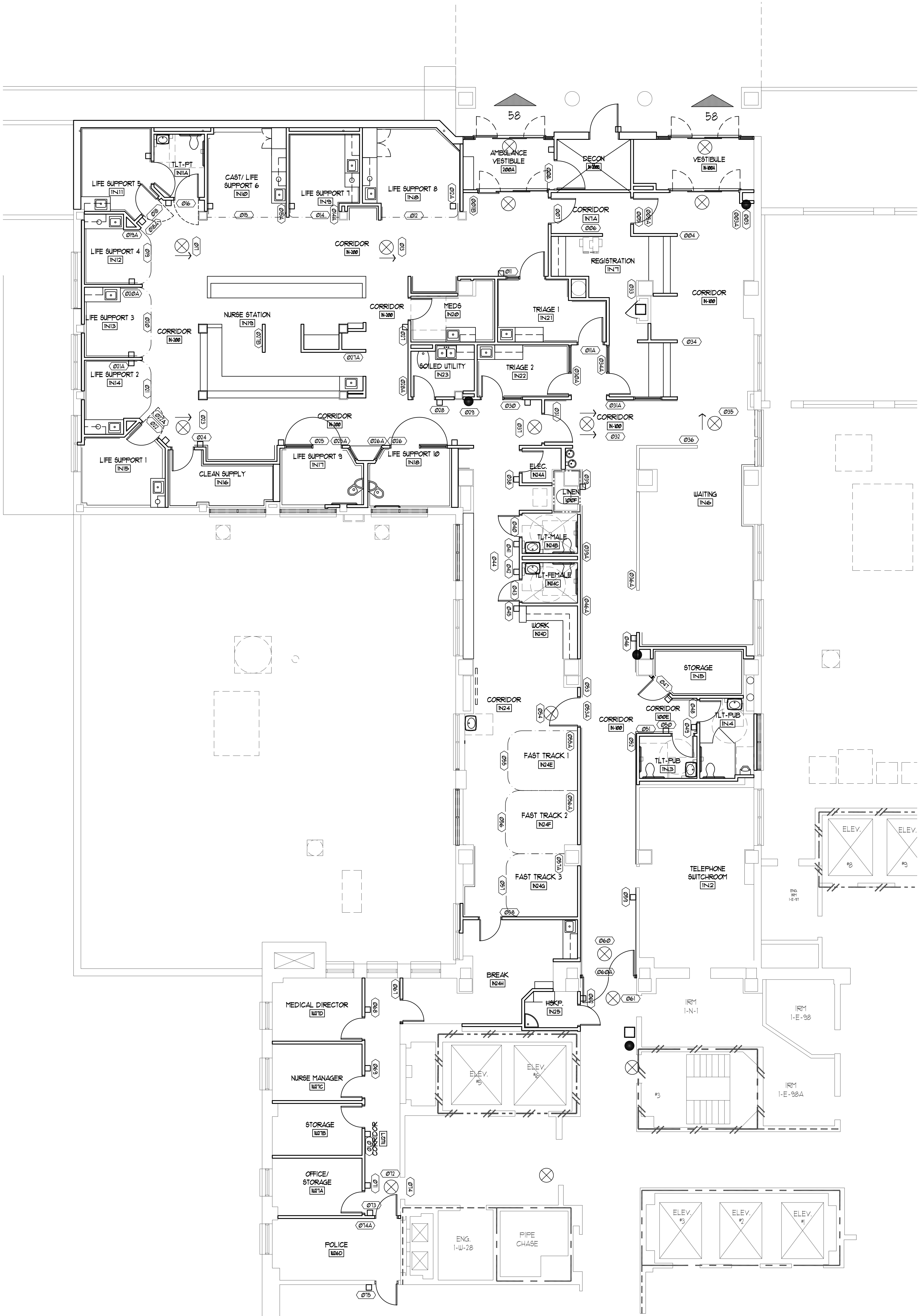


GENERAL CONTRACTOR IS TO SUBMIT SIGNAGE SHOP DRAWINGS,  
FINAL ROOM NAMES AND LOCATIONS WILL BE DETERMINED BY VA  
COR

SIGNAGE LEGEND - 1N - EMERGENCY

SIGN NUMBER	SIGNAGE TYPE	SIGNAGE TEXT	NOTES
003	INF-2	FIRE EXTINGUISHER	--
003A	INF-5	--	--
004	PRO-2	CHECK-IN	COORDINATE TEXT WITH COR
005	RID-2	INTA	--
005A	INF-3	AUTH PERSONNEL ONLY	--
006	RID-2	INT	--
007	RID-2	IN200	--
008	RID-2	IN200-B	--
011	RID-2	IN21	--
011A	RID-2	IN21	--
011B	INF-5	--	--
012	PRO-2	--	COORDINATE TEXT WITH COR
012A	RR-4	IN8	--
013	INF-1	EXIT	CEILING MOUNTED
014	PRO-2	--	COORDINATE TEXT WITH COR
014A	RR-4	IN9	--
015	PRO-2	--	COORDINATE TEXT WITH COR
015A	RR-4	IN10	--
016	RR-4	IN1A	--
017	INF-1	EXIT	CEILING MOUNTED
018	PRO-2	--	COORDINATE TEXT WITH COR
018A	RR-4	IN11	--
019	PRO-2	--	COORDINATE TEXT WITH COR
019A	RR-4	IN12	--
020	PRO-2	--	COORDINATE TEXT WITH COR
020A	RR-4	IN13	--
021	PRO-2	--	COORDINATE TEXT WITH COR
021A	RR-4	IN14	--
022	PRO-2	--	COORDINATE TEXT WITH COR
022A	RR-4	IN15	--
023	INF-1	EXIT	CEILING MOUNTED
024	RID-2	IN16	--
025	PRO-2	--	COORDINATE TEXT WITH COR
025A	RR-4	IN17	--
026	PRO-2	--	COORDINATE TEXT WITH COR
026A	RR-4	IN18	--
027	RID-2	IN20	--
027A	RID-2	IN19	--
027B	INF-5	--	--
028	RID-2	IN23	--
028A	REG-2	--	--
029	INF-2	FIRE EXTINGUISHER	--
030	RID-2	IN22	--
030A	RID-2	IN22	--
031	INF-3	AUTH PERSONNEL ONLY	--
031A	DIR-1	--	COORDINATE ADD. TEXT WITH COR
032	INF-1	EXIT	CEILING MOUNTED
033	INF-2	FIRE EXTINGUISHER	--
034	PRO-2	CHECK-IN	--
034A	PRO-2	INT	--
035	INF-6	EXIT	--
036	RID-2	IN6	--
036A	RID-2	IN6	--
037	INF-1	EXIT	CEILING MOUNTED
038	RID-2	IN24A	--
039	INF-2	FIRE EXTINGUISHER	--
039A	REG-2	--	--
040	RR-4	IN24B	--
041	RR-3	--	--
042	RR-4	IN24C	--
043	RR-2	--	--
044	PRO-1	--	--
045	RID-2	IN24D	--
046	INF-2	FIRE EXTINGUISHER	--
046A	DIR-1	--	COORDINATE TEXT WITH COR
047	RID-2	IN5	--
048	RR-4	IN4	--
049	RR-3	--	--
050	RR-4	IN3	--
051	RR-2	--	--
052	PRO-1	--	--
053	RID-2	IN24	--
053A	INF-3	AUTH PERSONNEL ONLY	--
054	INF-1	EXIT	CEILING MOUNTED
055	PRO-2	--	COORDINATE TEXT WITH COR
055A	RR-4	IN24E	--
056	PRO-2	--	COORDINATE TEXT WITH COR
056A	RR-4	IN24F	--
057	PRO-2	--	COORDINATE TEXT WITH COR
057A	RR-4	IN24G	--
058	RID-2	IN24H	--
059	RR-4	IN2	--
060	INF-6	EXIT	--
060A	XX-X	I-NORTH	--
061	INF-6	EXIT	--
062	RID-2	IN25	--
067	RID-2	IN24H	--
068	RID-2	IN27D	--
069	RID-2	IN27C	--
070	RID-2	IN27B	--
071	RID-2	IN27A	--
072	INF-1	EXIT	CEILING MOUNTED
073	RID-2	IN26D	--
074	RID-2	IN27	--
074A	INF-5	--	--
075	RID-2	IN26D	--

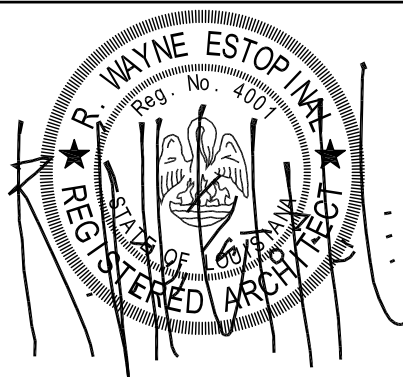


01 FIRST FLOOR  
SIGNAGE PLAN - 1NORTH  
SCALE: 1/8"=1'-0"

CONSULTANTS:



The Estopinal Group  
820 Jordan Street, Suite 507 tel. 318.424.3700  
Shreveport, LA 71101 fax 318.424.3764



PROJECT MANAGERS AND ENGINEERS:

**TNF** A VETERAN  
OWNED COMPANY  
3 EXECUTIVE COURT, UNIT 4  
SOUTH BARRINGTON, IL 60010

Room Signage Plan- 1N

Approved: Project Director

Project Title  
RENOVATE ED & PRIMARY CARE

Location  
SHREVEPORT VAMC  
510 EAST STONER AVE

Date  
01/09/13

Checked  
JAH

Drawn  
CSH

Project Number  
667-10-100

Building Number

Drawing Number

IDI.N2

Dwg. 44 of 112

Office of  
Construction  
and Facilities  
Management



Scale: AS NOTED