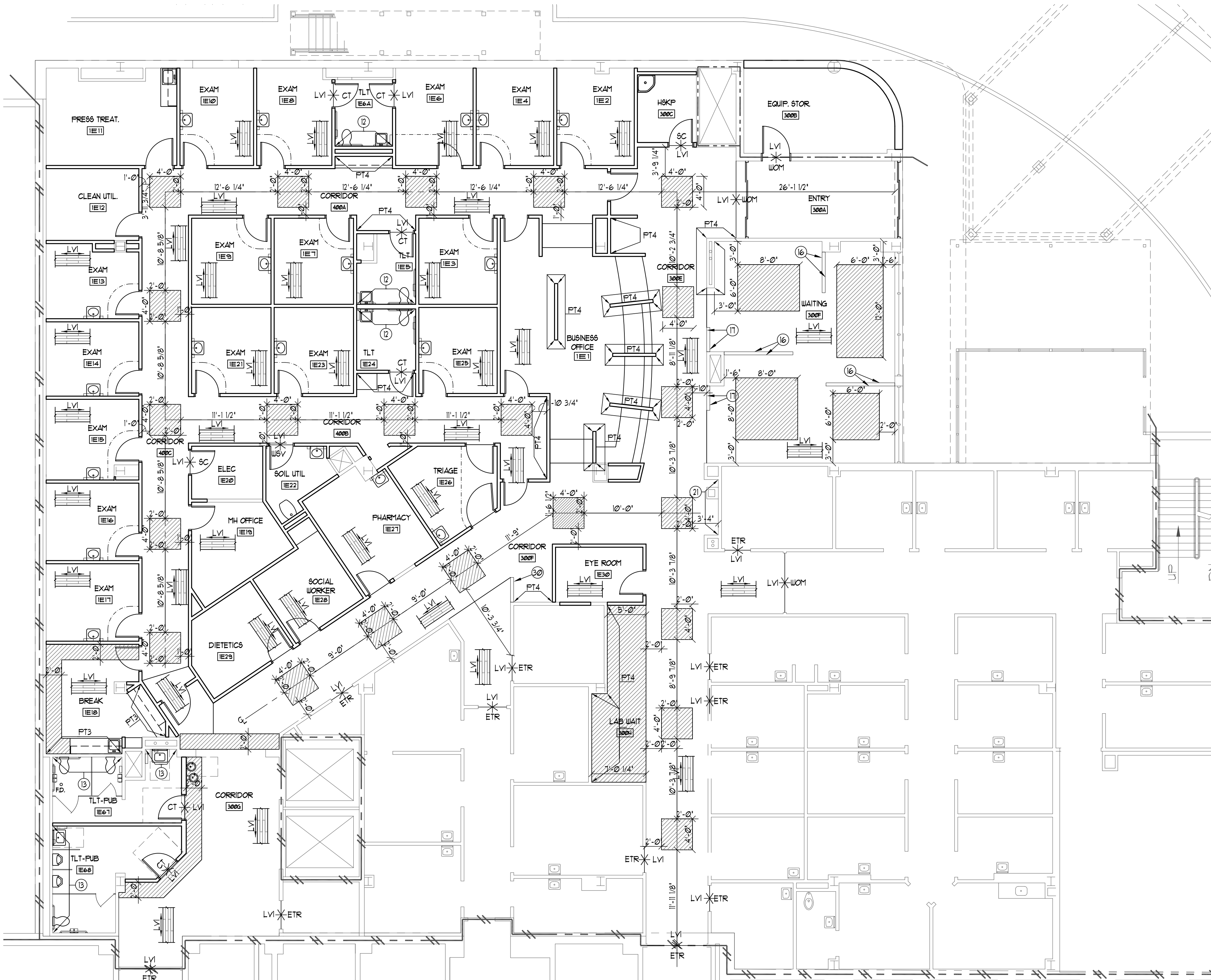


ROOM FINISH SCHEDULE - EAST - PRIMARY CARE					
ROOM NUMBER	ROOM NAME	FLOOR	BASE MATL	WALLS	CEILING
IE1	BUSINESS OFFICE	LVI	RB3	PT14	APCI/PGB
IE2	EXAM	LVT1	RB3	PT2/SUI	APCI
IE3	EXAM	LVT1	RB3	PT3/SUI	APCI
IE4	EXAM	LVT1	RB3	PT4/SUI	APCI
IE5	TLT	CT1	CTB2	WCT14/EPT2	APCI
IE6	EXAM	LVT1	RB3	PT2/SUI	APCI
IE6A	TLT	CT1	CTB2	WCT14/EPT2	APCI
IE7	EXAM	LVT1	RB3	PT3/SUI	APCI
IE8	EXAM	LVT1	RB3	PT2/SUI	APCI
IE9	EXAM	LVT1	RB3	PT3/SUI	APCI
IE10	EXAM	LVT1	RB3	PT4/SUI	APCI
IE11	PRESS. TREAT.	LVT1	RB3	PT3/SUI	APCI/PGB
IE12	CLEAN UTIL.	LVT2	RB3	PT1/SUI	APCI
IE13	EXAM	LVT1	RB3	PT2/SUI	APCI
IE14	EXAM	LVT1	RB3	PT3/SUI	APCI
IE15	EXAM	LVT1	RB3	PT4/SUI	APCI
IE16	EXAM	LVT1	RB3	PT2/SUI	APCI
IE17	EXAM	LVT1	RB3	PT3/SUI	APCI
IE18	BREAK	LVT12	RB3	PT13	APCI/PGB
IE19	MH OFFICE	LVT1	RB3	PT4	APCI
IE20	ELEC.	SC1	RB3	PT1	APCI
IE21	EXAM	LVT1	RB3	PT3/SUI	APCI
IE22	SOIL UTIL.	USV1	RB3	EPT2/SUI	APCI
IE23	EXAM	LVT1	RB3	PT4/SUI	APCI
IE24	TLT	CT1	CTB2	WCT14/EPT2	APCI
IE25	EXAM	LVT1	RB3	PT2/SUI	APCI
IE26	TRIAGE	LVT1	RB3	PT3/SUI	APCI
IE27	PHARMACY	LVT1	RB3	PT4/SUI	APCI
IE28	SOCIAL WORKER	LVT1	RB3	PT3	APCI/PGB
IE29	DIETETICS	LVT1	RB3	PT4	APCI
IE30	EYE ROOM	LVT1	RB3	PT3	APCI
IE67	TLT-PUB	CT2	CTB2	WCT15/EPT2	APCI
IE68	TLT-PUB	CT2	CTB2	WCT15/EPT2	APCI
300A	ENTRY	UCM1	RB2	PT4	APCI
300B	EQUIP. STORAGE	LVT2	RB3	PT1/SUI	APCI
300C	H&KP	SC1	RB3	EPT1	APCI
300D	WAITING	LVT12	RB1	PT4/UCT12	APCI/PGB
300E	CORRIDOR	LVT12	RB1	PT14	APCI/PGB
300F	CORRIDOR	LVT12	RB1	PT1	APCI
300G	CORRIDOR	LVT12	RB1	PT1	APCI
300H	LAB WAIT	LVT2	RB1	PT14	APCI/PGB
400A	CORRIDOR	LVT12	RB1/RB3	PT14	APCI/PGB
400B	CORRIDOR	LVT12	RB1/RB3	PT14	APCI/PGB
400C	CORRIDOR	LVT12	RB1	PT1	APCI

NOTE:
* RUBBER BASE 3 AT CASEWORK ONLY.



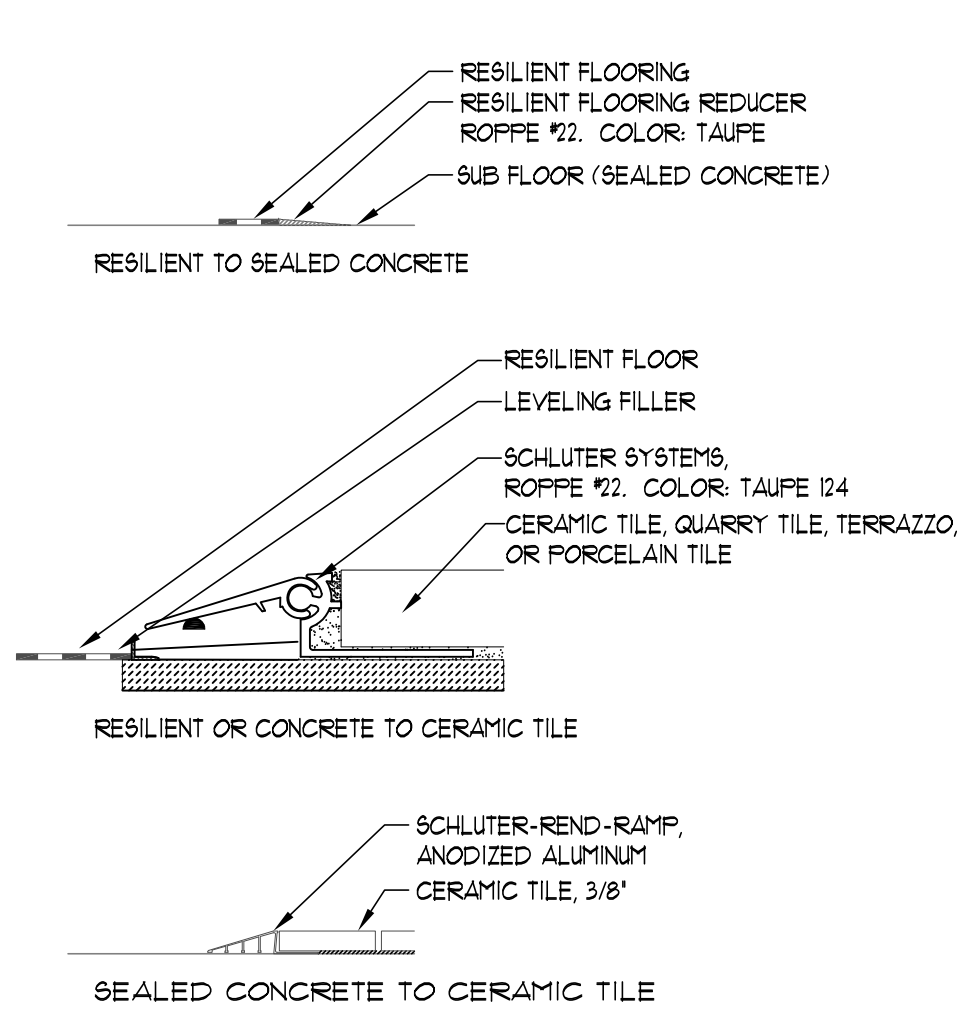
REMARKS & KEYNOTES

- REFER TO REFLECTED CEILING PLAN FOR ACCENT PAINT LOCATIONS AT BULKHEADS.
- CHAIR RAIL SHALL BE INSTALLED ACCORDING TO SPECIFIED FURNITURE PER AREA. HEIGHTS WILL VARY. OWNER TO PROVIDE INSTALLATION HEIGHTS.
- PROVIDE UCT ON ALL WALLS. REFER TO 01/DIN FOR TILE PATTERN AND DIMENSIONS.
- REFER TO INTERIOR ELEVATIONS FOR CASEWORK FINISH INFORMATION.
- PROVIDE SUI 4'-0" ABOVE SCHEDULED BASE. PAINT SUI AS SPECIFIED ABOVE TO CEILING LINE.
- PATCH AND MATCH EXISTING FINISHES WHERE NEW FINISHES ARE REQUIRED.
- EXTENT OF FINISHES.
- PROVIDE SUI AT ALL WALLS. REFER TO ELEVATION 01/AINI FOR DIMENSIONING.
- PROVIDE SUI AT ALL WALLS. REFER TO ELEVATION 01/AINI FOR DIMENSIONS.
- REFER TO 24/AINI FOR COLUMN WRAP FINISHES AND DETAILS.
- PROVIDE SUI 4'-0" ABOVE SCHEDULED BASE. PT1 ABOVE TO CEILING LINE. WALL PROTECTION INSTALLED BELOW WINDOW SILL WHERE APPLICABLE.
- PROVIDE UCT AT UET WALL ONLY. PAINT ALL OTHER WALLS. EPT2. REFER TO 01/DIN FOR THE PATTERN AND DIMENSIONS.
- PROVIDE UCT 15 AT UET WALL ONLY. PAINT ALL OTHER WALLS. EPT2. REFER TO 01/DIN FOR THE PATTERN AND DIMENSIONS.
- PROVIDE SUI AT INDICATED AREAS. REFER TO ELEVATION 34/AINI. WALL PROTECTION INSTALLED BELOW WINDOW SILL. PT1 ABOVE TO CEILING LINE.
- PROVIDE FRP ABOVE SCHEDULED BASE TO 4'-0" HIGH ON ALL WALLS. EPT1 ABOVE TO CEILING LINE.
- REFER TO 03/DIN AND 03/DEI FOR WALL ELEVATION AND FINISHES. PROVIDE SOFTENED EDGE AT OUTSIDE CORNERS.
- REFER TO 04/DIN FOR WALL ELEVATION AND FINISHES. PROVIDE SOFTENED EDGE AT OUTSIDE CORNERS.
- INSTALL SUI TO A HEIGHT OF 3'-0" ABOVE SCHEDULED BASE. PT1 ABOVE TO CEILING LINE. (IF INSTALLED ADJACENT TO CASEWORK SUI FLUSH WITH TOP OF BACKFLASH).
- PROVIDE SUI TO A HEIGHT OF 4'-0" ABOVE SCHEDULED BASE. EPT2 TO CEILING LINE.
- ALL WALLS SHALL RECEIVE PT1/SUI. REFER TO 21/AINI FOR SUI INSTALLATION HEIGHT.
- REFER TO ELEVATION 04/DIN AND 04/DEI FOR TILE PATTERN AND DIMENSIONS.
- NOT USED.
- PROVIDE SUI AS INDICATED ON A4 SERIES. REFER TO ELEVATIONS FOR DIMENSIONS. PAINT AS SCHEDULED ABOVE WALL PROTECTION TO CEILING LINE.
- NOT USED.
- PROVIDE SUI ABOVE SCHEDULED BASE. REFER TO ELEVATION 34/AINI FOR SUI HEIGHT. PT1 ABOVE TO CEILING LINE.
- PROVIDE SUI ON FACE AND SIDE OF WALL. TERMINATE IN CORNER RB3 AT CASEWORK.
- PROVIDE SUI ABOVE SCHEDULED BASE. REFER TO ELEVATION 34/AINI FOR SUI HEIGHT. PT1 ABOVE TO CEILING LINE.
- INSTALL SUI 4'-0" ABOVE SCHEDULED BASE. PT1 ABOVE TO CEILING LINE.
- PROVIDE SUI ABOVE SCHEDULED BASE TO A HEIGHT OF 4'-0" AT INDICATED AREAS. PT1 ABOVE TO CEILING LINE.
- HALF WALL CAPPED WITH S61.
- PROVIDE U7 BETWEEN NEW WALL AND EXISTING WINDOW. CONTRACTOR TO MATCH FACILITIES EXISTING WINDOW SHADES.

GENERAL INTERIOR DESIGN NOTES:

- ALL HOLLOW METAL DOOR FRAMES SHALL BE PAINTED PT5 UNLESS OTHERWISE NOTED.
- PROVIDE TRANSITION STRIP AT ALL FLOORING MATERIAL JUNCTURES. REFER TO IDIAN AND IDIAE FLOORING TRANSITIONS. CENTER OF TRANSITION STRIP TO BE LOCATED UNDER CENTER OF DOOR.
- REFER TO FLOOR FINISH PLANS FOR ACCENT PAINT LOCATIONS.
- ALL WINDOW SILLS SHALL BE S62, UNLESS OTHERWISE NOTED.
- NOT USED.
- ALL FLOORING MATERIALS TO EXTEND TO WALL UNDER OPEN COUNTERS.
- SERIES _____ INDICATES WALL PROTECTION LOCATION (REFER TO A4).
- PAINT FACE OF BULKHEADS TO MATCH ADJACENT WALL COLOR UNLESS NOTED OTHERWISE.
- PROVIDE BLOCKING AS NEEDED FOR ALL WINDOW TREATMENTS.
- INSTALL HANDRAIL AT 34" TO TOP OF RAIL.
- INSTALL CORNER GUARDS ABOVE SCHEDULED BASE TO HEIGHT AS INDICATED BY PRODUCT.
- DOOR SPECIES AND COLOR: HARSHFIELD DOOR SYSTEMS, BIRCH NATURAL, ROTARY CUT, HONEY 26-35 (VIA STANDARD).
- ALL MIRRORS SHALL BE INSTALLED ON TOP OF TILE.

FLOORING TRANSITIONS



FINISH MATERIAL LEGEND:

LEGEND:

APC	ACOUSTICAL PANEL CEILING	PGB	PAINTED GYPSUM BOARD
CC	CUBICLE CURTAIN	PL	PLASTIC LAMINATE
CG	CORNER GUARD	FT	PAINT
CR	CHAIR RAIL	RB	RESILIENT BASE
CT	CERAMIC TILE	SC	SEALED CONCRETE
CTB	CERAMIC TILE BASE	S6	SOLID SURFACE
EPT	EPOXY PAINT	UCT	CERAMIC WALL TILE
EPGB	EPOXY PAINTED GYPSUM BOARD	UG	WALL GUARD
ETR	EXISTING TO REMAIN	UCM	WALK OFF MAT
HR	HANDRAIL	USV	WELDED SHEET VINYL
LV	LUXURY VINYL	UT	WINDOW TREATMENT

FLOORING:

- LVI AR*STRONG NATURAL CREATIONS ARBOR ART, TP046, CERISIER MIEL, 4' X 36"
- LVT2 AR*STRONG NATURAL CREATIONS EARTH CUTS, TP95, KASHMIR SAND, 12' X 24"
- USV1 AR*STRONG MED*TECH 88435 FUMICE STONE, WELD ROD, UP432, (REFER TO SPECIFICATIONS FOR FLOORING INSTALLATION METHODS).
- CT1 DALTILE VERANDA SOLIDS AND TONES. COLOR: GRAVEL. SIZE: 3' X 3' MOSAIC.
- CT2 DALTILE VERANDA SOLIDS AND TONES. COLOR: GRAVEL. SIZE: 13' X 20"
- CT3 DALTILE VERANDA SOLIDS AND TONES. COLOR: GRAVEL. SIZE: 13' X 20"
- SC1 BASF SONNOCRETE KURE-N-SEAL UB.
- PM1 SHAW CONTRACT GROUP WELCOME TILE. STYLE: 59410. COLOR: CHOCOLATE 1012. TILE INSTALLATION METHOD: 1/4 TURN.

BASE:

- CTB1 DALTILE VERANDA SOLIDS AND TONES, 3-36EST.
- SIZE: 6' X 13'.
- GROUT: TEC ANTIGUE WHITE 940. (LINE UP GROUT/JOINT LINES WITH CT AND UCT.)
- CTB2 DALTILE VERANDA SOLIDS AND TONES, COVE BASE 3-36EST.
- SIZE: 6' X 13'.
- COLOR: GRAVEL.
- GROUT: TEC LIGHT SMOKE 915, EPOXY. (LINE UP GROUT/JOINT LINES WITH CT AND UCT.)
- CTB3 DALTILE SURETREAD PAVES COVE BASE P-3665.
- SIZE: 6' X 6'.
- COLOR: GOLDEN BROWN 0078, 6' X 6'.
- GROUT: TEC 985 SAND, EPOXY.
- RB1 ROFFE PINNACLE RUBBER COVE BASE, 6' H, 1/8" GAUGE.
- COLOR: 124 TAUPE. 120 FT. COILS.
- PREFORMED INSIDE/OUTSIDE FACTORY CORNER.
- RB2 ROFFE PINNACLE RUBBER STRAIGHT BASE, 6' H, 1/8" GAUGE.
- COLOR: 133 BLACK BROWN 120 FT. COILS.
- PREFORMED INSIDE/OUTSIDE FACTORY CORNER.
- RB3 ROFFE PINNACLE RUBBER COVE BASE, 4' H, 1" GAUGE. COLOR: 124 TAUPE. 120 FT. COILS.
- PREFORMED INSIDE/OUTSIDE FACTORY CORNER.

WALLS:

- UCT1 DALTILE GLASS REFLECTIONS (MOSAIC) GR21MSIP, 1' X 1' MS. GROUT URBAN CAMOUFLAGE.
- GROUT: 1) TEC ANTIGUE WHITE 940 EPOXY, INSTALLED WITH UCT2.3
- 2) TEC LIGHT SMOKE 915, EPOXY, INSTALLED WITH UCT4.5.
- UCT2 DALTILE VERANDA SOLIDS AND TONES. COLOR: SAND. SIZE: 13' X 20".
- GROUT: TEC ANTIGUE WHITE 940 EPOXY. INSTALL TILE TO LINE UP WITH CTB2.
- UCT3 DALTILE VERANDA SOLIDS AND TONES. COLOR: SAND. SIZE: 3' X 20".
- GROUT: TEC ANTIGUE WHITE 940 EPOXY.
- UCT4 DALTILE VERANDA SOLIDS AND TONES. COLOR: GRAVEL. SIZE: 13' X 13".
- GROUT: TEC LIGHT SMOKE 915, EPOXY.
- UCT5 DALTILE VERANDA SOLIDS AND TONES. COLOR: GRAVEL. SIZE: 13' X 20".
- GROUT: TEC LIGHT SMOKE 915, EPOXY.
- UCT6 DALTILE GLAZED WALL TILE, SEMI-GLOSS, ARCTIC WHITE 0190, 6' X 6".
- GROUT: TEC 910 BRIGHT WHITE EPOXY.

EPT1:

- NOT USED.
- EPT2 SHERWIN WILLIAMS 0046 WHITE HYACINTH SEMI-GLOSS, EPOXY.
- EPT3 SHERWIN WILLIAMS 6278 RAIN, SEMI-GLOSS, EPOXY.
- EPT4 SHERWIN WILLIAMS 2860 SAGE, SEMI-GLOSS, EPOXY.
- PT1 SHERWIN WILLIAMS 0046 WHITE HYACINTH, SEMI-GLOSS.
- PT2 SHERWIN WILLIAMS 0011 CREWEL TAN, SEMI-GLOSS.
- PT3 SHERWIN WILLIAMS 6278 RAIN, SEMI-GLOSS.
- PT4 SHERWIN WILLIAMS 2860 SAGE, SEMI-GLOSS.
- PT5 SHERWIN WILLIAMS 1801 DRY DOCK, SEMI-GLOSS ENAMEL (DOOR FRAME AND ALL WINDOW TRIM, EXISTING AND NEW).

CEILING:

- APC1 CERTAINTED BAROQUE PERFORMANCE SERIES, BET-51, 24' X 24' X 3/8".
- GRID: CHICAGO METALLIC SUSPENSION GRID. MATCH HOSPITAL STANDARD GRID.
- COORDINATE WITH GOR.
- APC2 GRID: 15/6" STANDARD PRELUBE WHITE. (HIGH NRC RATING/ LIFE SUPPORT AREA).
- SHERWIN WILLIAMS CEILING WHITE.
- PGB1 SHERWIN WILLIAMS CEILING WHITE, EPOXY.
- EPGB SHERWIN WILLIAMS CEILING WHITE, EPOXY.

WALL PROTECTION:

- CG1 INPRO CORPORATION SURFACE MOUNT BLUNOSE 1502N, 3'3/4", 90", COLOR: WHITE SAND 0103.
- INPRO CORPORATION CHAIR RAIL, 2600, 3/4", COLOR: WHITE SAND 0103.
- INPRO CORPORATION HAND RAIL, 800, 5-1/2" H, COLOR: WHITE SAND 0103.
- INPRO CORPORATION RIGID VINYL SHEET, 0407, VELVET TEXTURE, COLOR: WHITE SAND 0103, TOP CAP.
- UG INPRO CORPORATION WALL GUARD 1600, 6", COLOR: WHITE SAND 0103.

PLASTIC LAMINATES:

- PL1 FORMICA 3508-58 TATAMI MAT, MATTE FINISH.
- PL2 WILSONART 4841-60 DESERT ZEPHYR.

SOLID SURFACING MATERIAL:

- S61 CORIAN POSSIL.
- S62 CORIAN WITCH HAZEL (WINDOW SILLS).

WINDOW TREATMENT: (CONTRACTOR FURNISHED, CONTRACTOR INSTALLED)

- UT1 DRAPER SOLAR CONTROL SHADING SYSTEMS. 3%. COLOR: TED.
- UT2 SEE KEYNOTE 31.

CUBICLE CURTAIN: (CONTRACTOR FURNISHED, CONTRACTOR INSTALLED)

- CCI MOMENTUM TEXTURES, NAPA, COLOR: GAIA. (FULL FABRIC CURTAIN, NO MESH TOP).

FLOOR PATTERN LEGENDS

LUXURY VINYL LEGEND:

- LV1
- LV2
- LV2 (WHEN SPECIFIED AS A FIELD TILE, REFER TO ROOM FINISH SCHEDULE)

Scale: AS NOTED

Revisions:		Date:		CONSULTANTS:		PROJECT MANAGERS AND ENGINEERS:		Drawing Title		Project Title		Project Number		Office of Construction and Facilities Management	
								FLOOR FINISH PLAN AND SCHEDULE - IE		RENOVATE ED & PRIMARY CARE		667-10-100		Department of Veterans Affairs	
								Approved: Project Director		Location		Building Number			
										SHREVEPORT VAMC				Dwg. 45 of 112	
										510 EAST STONER AVE		Drawing Number			
										Date		Checked		Drawn	
										01/09/13		JAH		CSH	