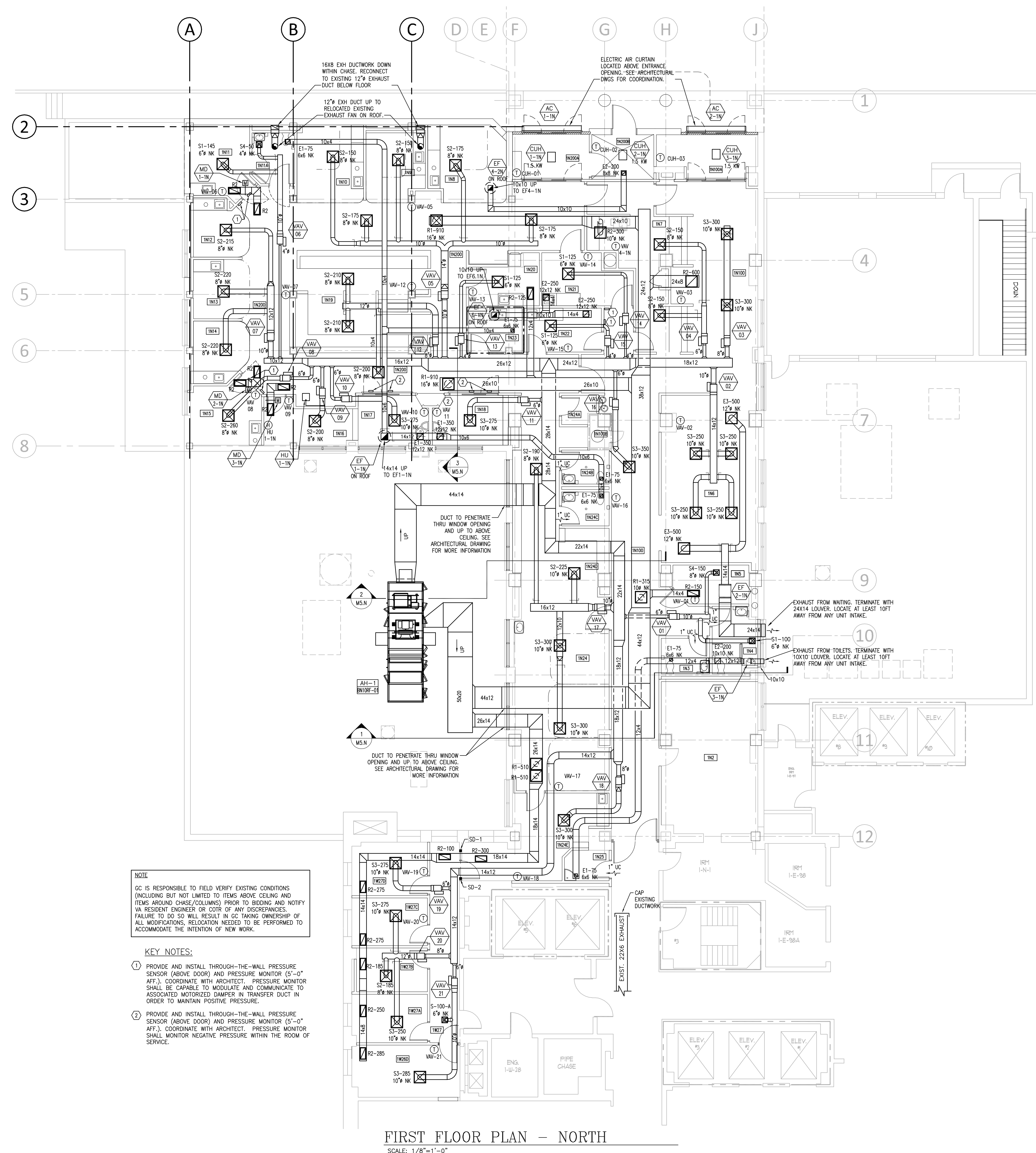


three inches = one foot  
one and one half inches = one foot  
one inch = one foot  
three quarters inch = one foot  
one half inch = one foot  
three eighths inch = one foot  
one quarter inch = one foot  
one eighth inch = one foot

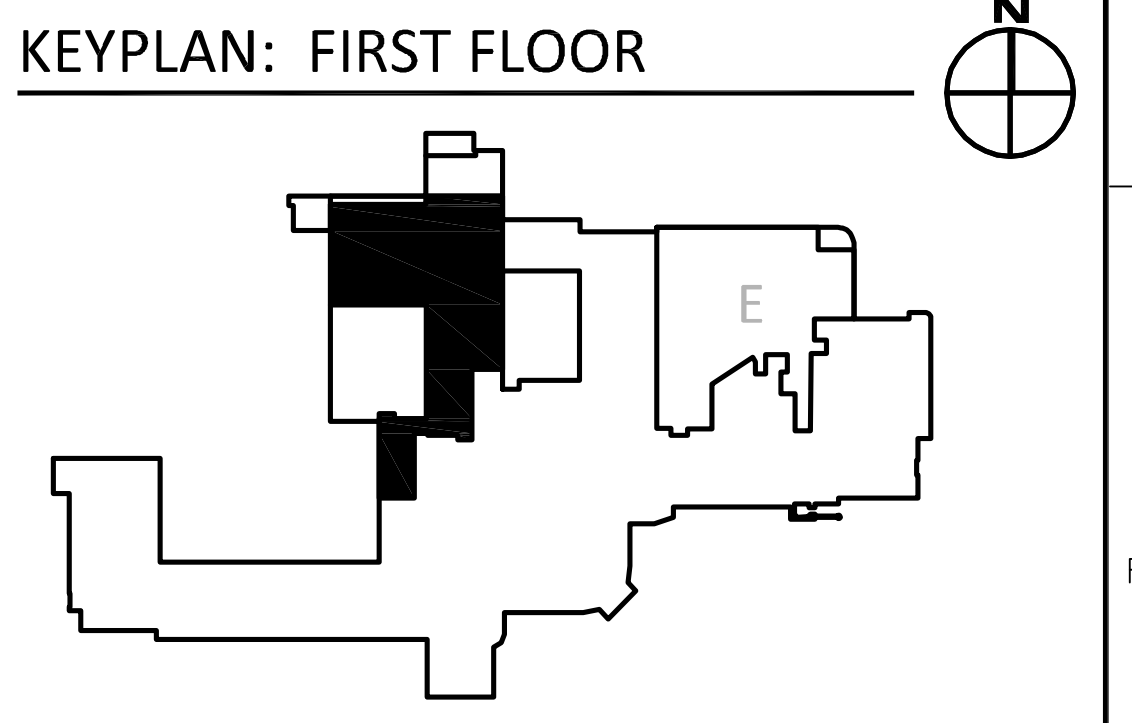


NOTE  
GC IS RESPONSIBLE TO FIELD VERIFY EXISTING CONDITIONS (INCLUDING BUT NOT LIMITED TO ITEMS ABOVE CEILING AND ITEMS AROUND CHASE/COLUMNS) PRIOR TO BIDDING AND NOTIFY VA RESIDENT ENGINEER OR COTR OF ANY DISCREPANCIES. FAILURE TO DO SO WILL RESULT IN GC TAKING OWNERSHIP OF ALL MODIFICATIONS. RELOCATION NEEDED TO BE PERFORMED TO ACCOMMODATE THE INTENTION OF NEW WORK.

- KEY NOTES:
1. PROVIDE AND INSTALL THROUGH-THE-WALL PRESSURE SENSOR (ABOVE DOOR) AND PRESSURE MONITOR (5'-0" AFF.). COORDINATE WITH ARCHITECT. PRESSURE MONITOR SHALL BE CAPABLE TO MODULATE AND COMMUNICATE TO ASSOCIATED MOTORIZED DAMPER IN TRANSFER DUCT IN ORDER TO MAINTAIN POSITIVE PRESSURE.
  2. PROVIDE AND INSTALL THROUGH-THE-WALL PRESSURE SENSOR (ABOVE DOOR) AND PRESSURE MONITOR (5'-0" AFF.). COORDINATE WITH ARCHITECT. PRESSURE MONITOR SHALL MONITOR NEGATIVE PRESSURE WITHIN THE ROOM OF SERVICE.

FIRST FLOOR PLAN - NORTH  
SCALE: 1/8"=1'-0"

ROOM NAME SCHEDULE	
ROOM NUMBER	ROOM NAME
1N2	TELEPHONE SWITCHROOM
1N3	TLT-PUB
1N4	TLT-PUB
1N5	STORAGE
1N6	WAITING
1N7	REGISTRATION
1N8	LIFE SUPPORT
1N9	LIFE SUPPORT
1N10	CAST/LIFE SUPPORT-6
1N11	LIFE SUPPORT 5
1N11A	TLT-PT
1N12	LIFE SUPPORT-4
1N13	LIFE SUPPORT-3
1N14	LIFE SUPPORT-2
1N15	LIFE SUPPORT-1
1N16	CLEAN SUPPLY
1N17	LIFE SUPPORT-9
1N18	LIFE SUPPORT-10
1N19	NURSE STATION
1N20	MEDS
1N21	TRIAGE-1
1N22	TRIAGE-2
1N23	SOILED UTILITY
1N24	FAST TRACK
1N24A	ELEC.
1N24B	TLT-MALE
1N24C	TLT-FEMALE
1N24D	WORK
1N24E	BREAK
1N25	HSKP.
1W26D	POLICE
1W27A	OFFICE/STORAGE
1W27B	STORAGE
1W27C	NURSE MANAGER
1W27D	MEDICAL DIRECTOR
1N100	CORRIDOR
1N100A	VESTIBULE
1N200	CORRIDOR



FULLY SPRINKLERED  
Scale: AS NOTED

<b>CONSULTANTS:</b>  The Estopinal Group 820 Jordan Street, Suite 507 tel. 318-424.3700 Shreveport, LA 71101 fax 318-424.3768		<b>PROJECT MANAGERS AND ENGINEERS:</b>  A VETERAN OWNED COMPANY 3 EXECUTIVE COURT, UNIT 4 SOUTH BARRINGTON, IL 60010		Drawing Title FIRST FLOOR-NORTH MECHANICAL PLAN Approved Project Director	Project Title RENOVATE ED + PRIMARY CARE Location SHREVEPORT VAMC 510 EAST STONER AVE Date 01/09/13 Checked RM Drawn SL	Project Number 667-10-100 Building Number 1N, 1E Drawing Number M1.N1 Dwg. 57 of 112	Office of Construction and Facilities Management Department of Veterans Affairs
Revisions	Date						