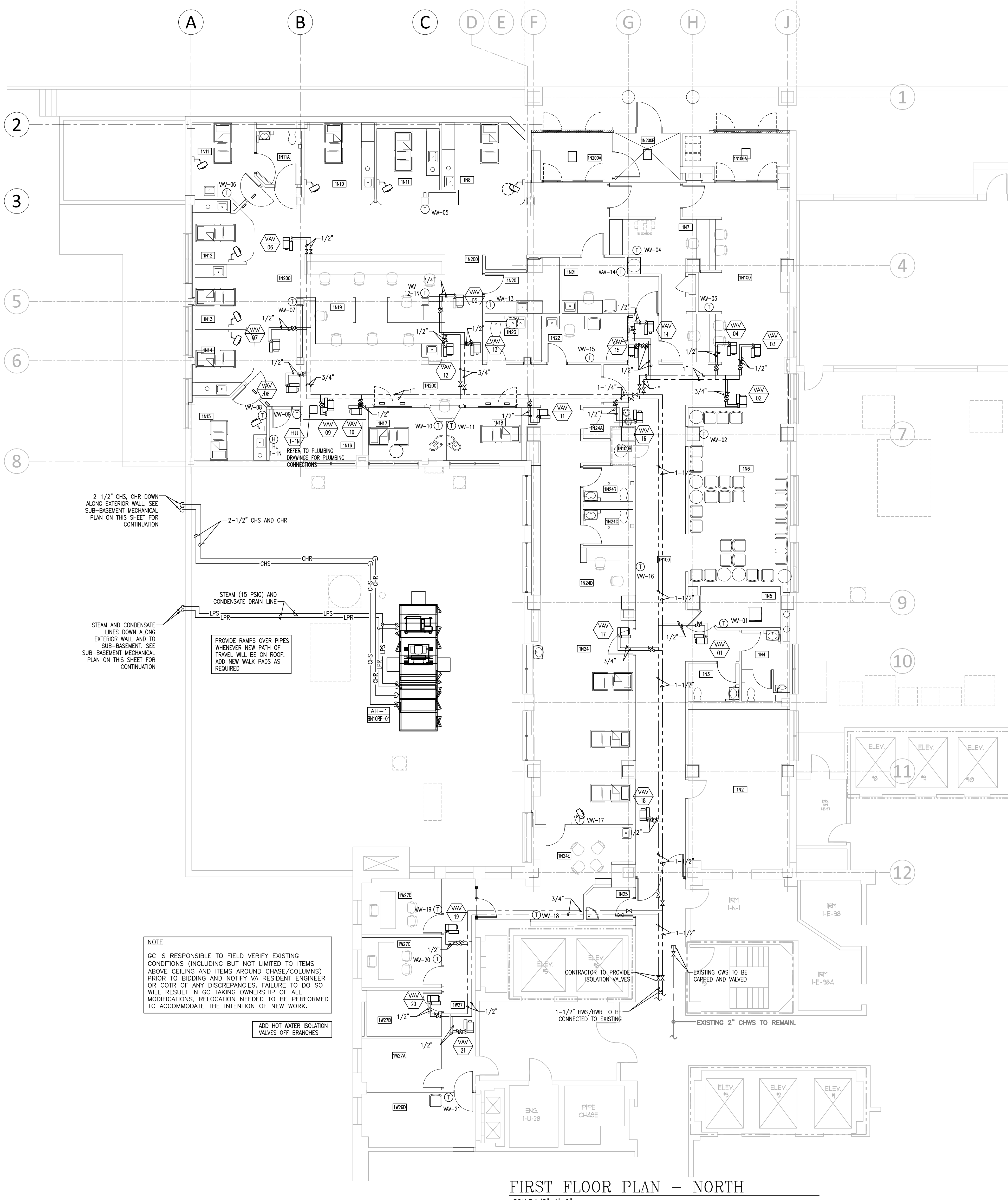
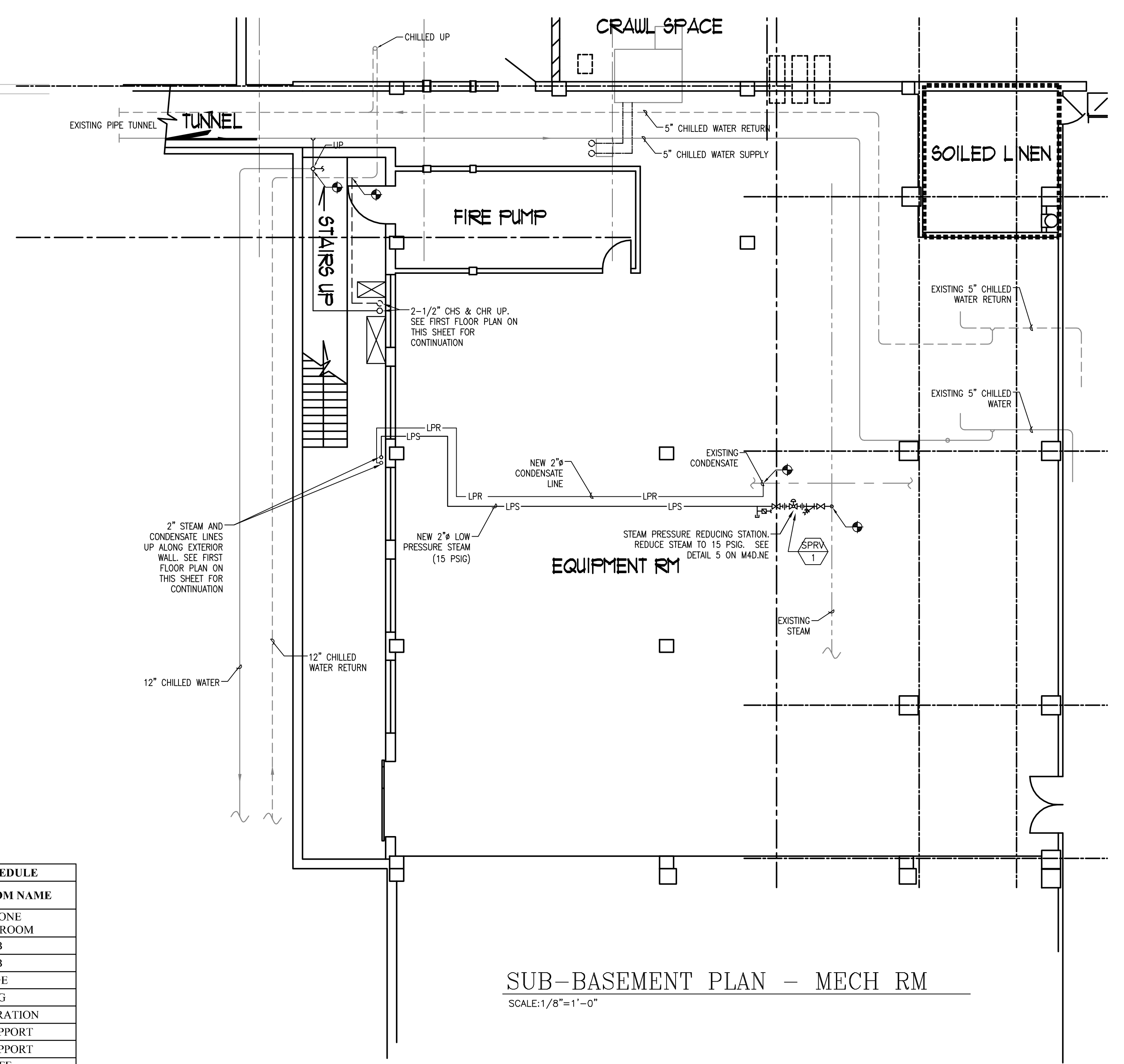


three inches = one foot  
one and one half inches = one foot  
one inch = one foot  
three quarters inch = one foot  
one half inch = one foot  
one eighth inch = one foot  
one quarter inch = one foot  
one eighth inch = one foot

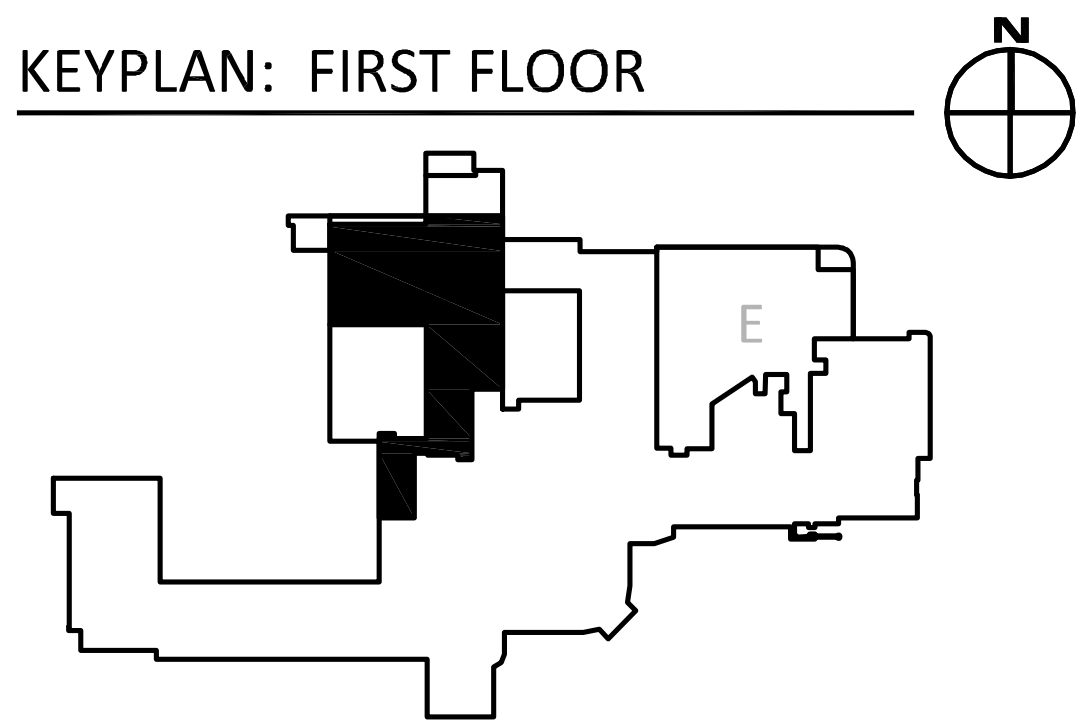


FIRST FLOOR PLAN - NORTH  
SCALE: 1/8"=1'-0"

ROOM NAME SCHEDULE	
ROOM NUMBER	ROOM NAME
IN2	TELEPHONE SWITCHROOM
IN3	TLT-PUB
IN4	TLT-PUB
IN5	STORAGE
IN6	WAITING
IN7	REGISTRATION
IN8	LIFE SUPPORT
IN9	LIFE SUPPORT
IN10	CAS/LIFE SUPPORT-6
IN11	LIFE SUPPORT-5
IN11A	TLT-PT
IN12	LIFE SUPPORT-4
IN13	LIFE SUPPORT-3
IN14	LIFE SUPPORT-2
IN15	LIFE SUPPORT-1
IN16	CLEAN SUPPLY
IN17	LIFE SUPPORT-9
IN18	LIFE SUPPORT-10
IN19	NURSE STATION
IN20	MEDS
IN21	TRIAGE-1
IN22	TRIAGE-2
IN24	FAST TRACK
IN23	SOILED UTILITY
IN24A	ELEC.
IN24B	TLT-MALE
IN24C	TLT-FEMALE
IN24D	WORK
IN24E	BREAK
IN25	HSP.
IN26D	POLICE
IN27A	OFFICE/STORAGE
IN27B	STORAGE
IN27C	NURSE MANAGER
IN27D	MEDICAL DIRECTOR
IN100	CORRIDOR
IN100A	VESTIBULE
IN200	CORRIDOR



SUB-BASEMENT PLAN - MECH RM  
SCALE: 1/8"=1'-0"



FULLY SPRINKLERED  
Scale: AS NOTED

<b>CONSULTANTS:</b>  The Estopinal Group 820 Jordan Street, Suite 507 tel. 318.424.3700 Shreveport, LA 71101 fax 318.424.3764		<b>PROJECT MANAGERS AND ENGINEERS:</b>  A VETERAN OWNED COMPANY 3 EXECUTIVE COURT, UNIT 4 SOUTH BARRINGTON, IL 60010		<b>Drawing Title</b> FIRST FLOOR-NORTH MECHANICAL PIPING PLAN  <b>Approved Project Director</b>	<b>Project Title</b> RENOVATE ED + PRIMARY CARE  <b>Location</b> SHREVEPORT VAMC 510 EAST STONER AVE  <b>Date</b> 01/09/13 <b>Checked</b> RM <b>Drawn</b> SL	<b>Project Number</b> 667-10-100 <b>Building Number</b> 1N, 1E <b>Drawing Number</b> M1.N2 Dwg. 58 of 112	<b>Office of Construction and Facilities Management</b>  Department of Veterans Affairs
---	--	--	--	---	--	---	---