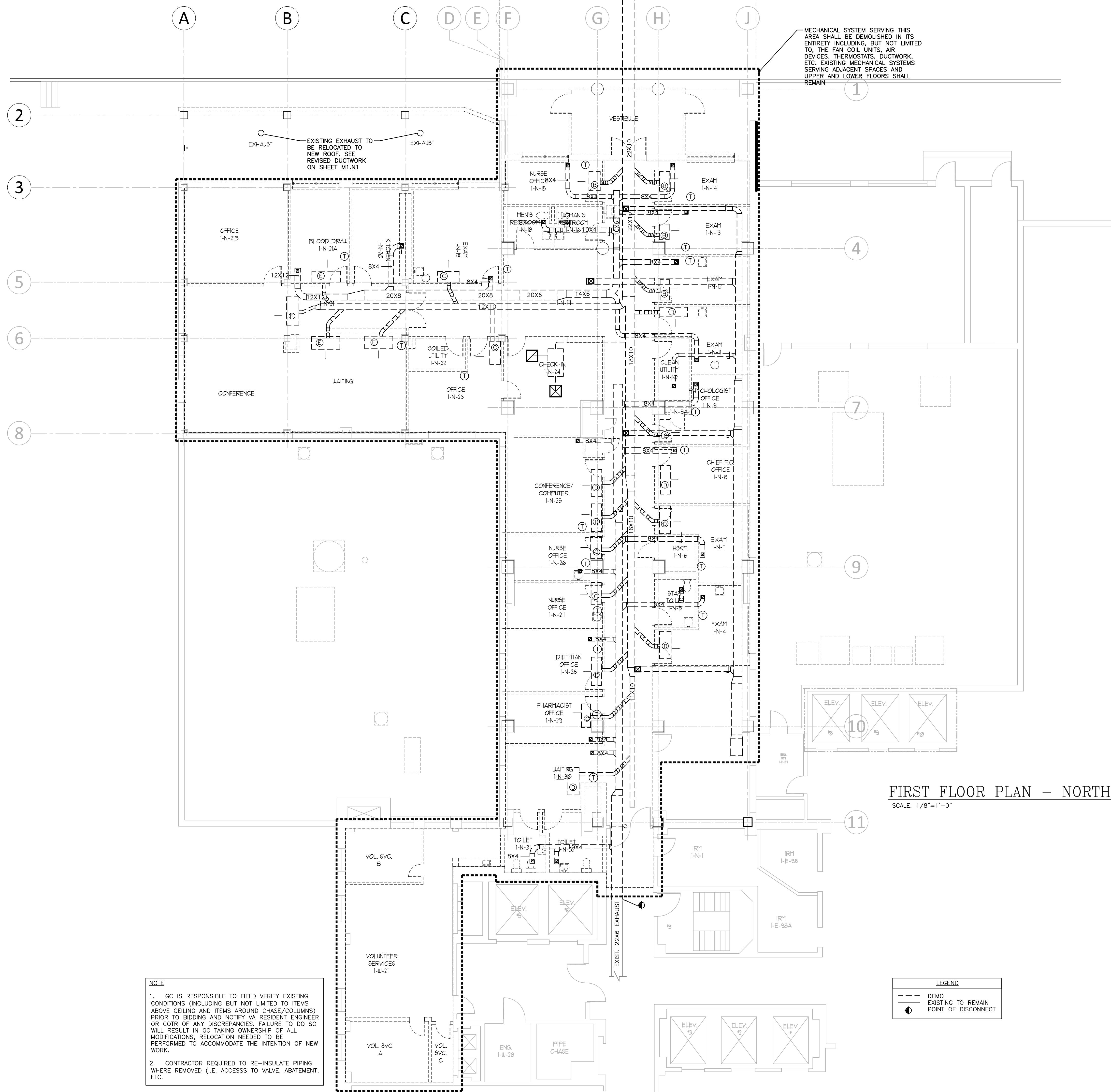


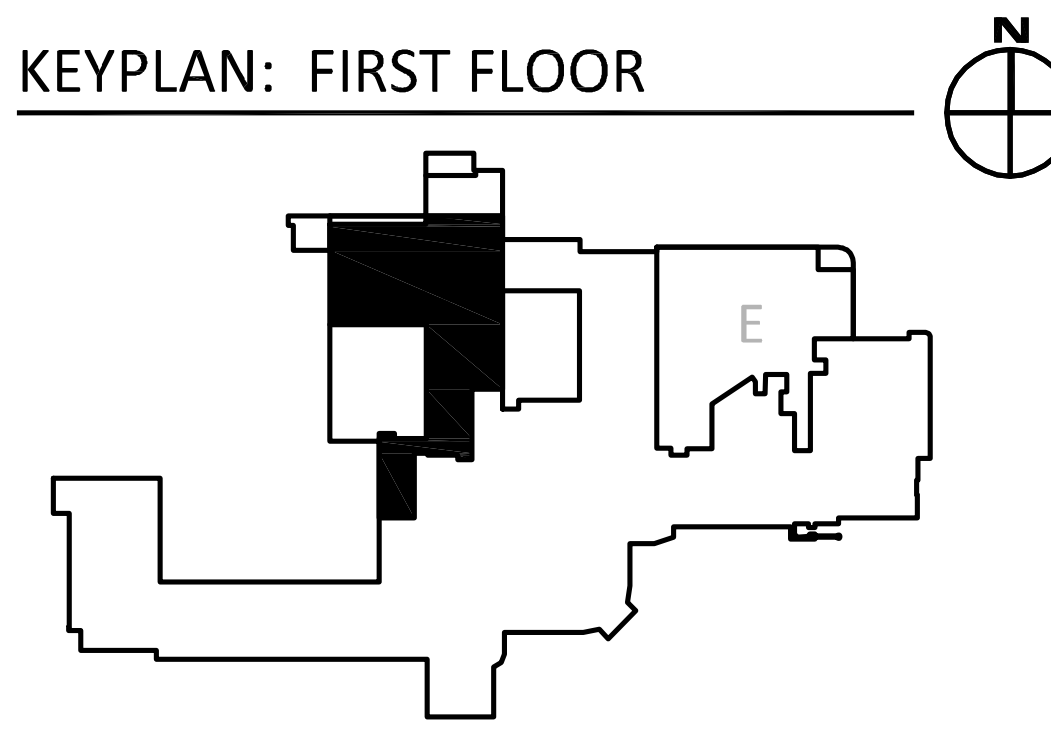
three inches = one foot
one and one half inches = one foot
one inch = one foot
three quarters inch = one foot
one half inch = one foot
three eighths inch = one foot
one quarter inch = one foot
one eighth inch = one foot






FIRST FLOOR PLAN - NORTH
SCALE: 1/8"=1'-0"

NOTE
1. GC IS RESPONSIBLE TO FIELD VERIFY EXISTING CONDITIONS (INCLUDING BUT NOT LIMITED TO ITEMS ABOVE CEILING AND ITEMS AROUND CHASE/COLUMNS) PRIOR TO BIDDING AND NOTIFY VA RESIDENT ENGINEER OR COTE OF ANY DISCREPANCIES. FAILURE TO DO SO WILL RESULT IN GC TAKING OWNERSHIP OF ALL MODIFICATIONS, RELOCATION NEEDED TO BE PERFORMED TO ACCOMMODATE THE INTENTION OF NEW WORK.
2. CONTRACTOR REQUIRED TO RE-INSULATE PIPING WHERE REMOVED (I.E. ACCESS TO VALVE, ABATEMENT, ETC.)

LEGEND
--- DEMO
--- EXISTING TO REMAIN
● POINT OF DISCONNECT



FULLY SPRINKLERED
Scale: AS NOTED

CONSULTANTS:  The Estopinal Group 820 Jordan Street, Suite 507 tel. 318.424.3700 Shreveport, LA 71101 fax 318.424.3764		PROJECT MANAGERS AND ENGINEERS:  A VETERAN OWNED COMPANY 3 EXECUTIVE COURT, UNIT 4 SOUTH BARRINGTON, IL 60010		Drawing Title FIRST FLOOR-NORTH MECHANICAL DEMO Approved Project Director		Project Title RENOVATE ED + PRIMARY CARE Location SHREVEPORT VAMC 510 EAST STONER AVE Date 01/09/13 Checked RM Drawn SL		Project Number 667-10-100 Building Number 1N, 1E Drawing Number M2.N1 Dwg. 61 of 112		Office of Construction and Facilities Management 	
--	--	---	--	--	--	--	--	---	--	--	--