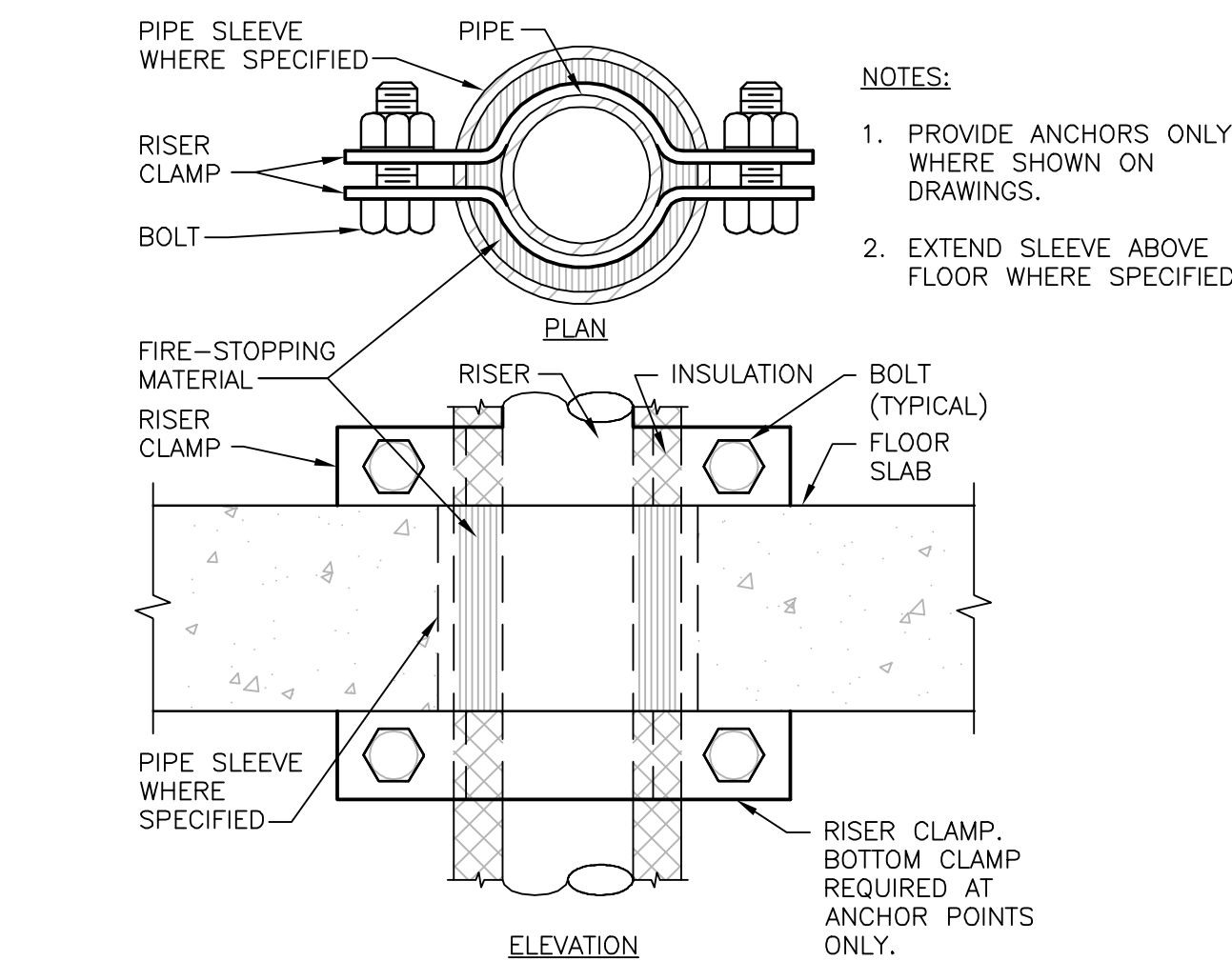
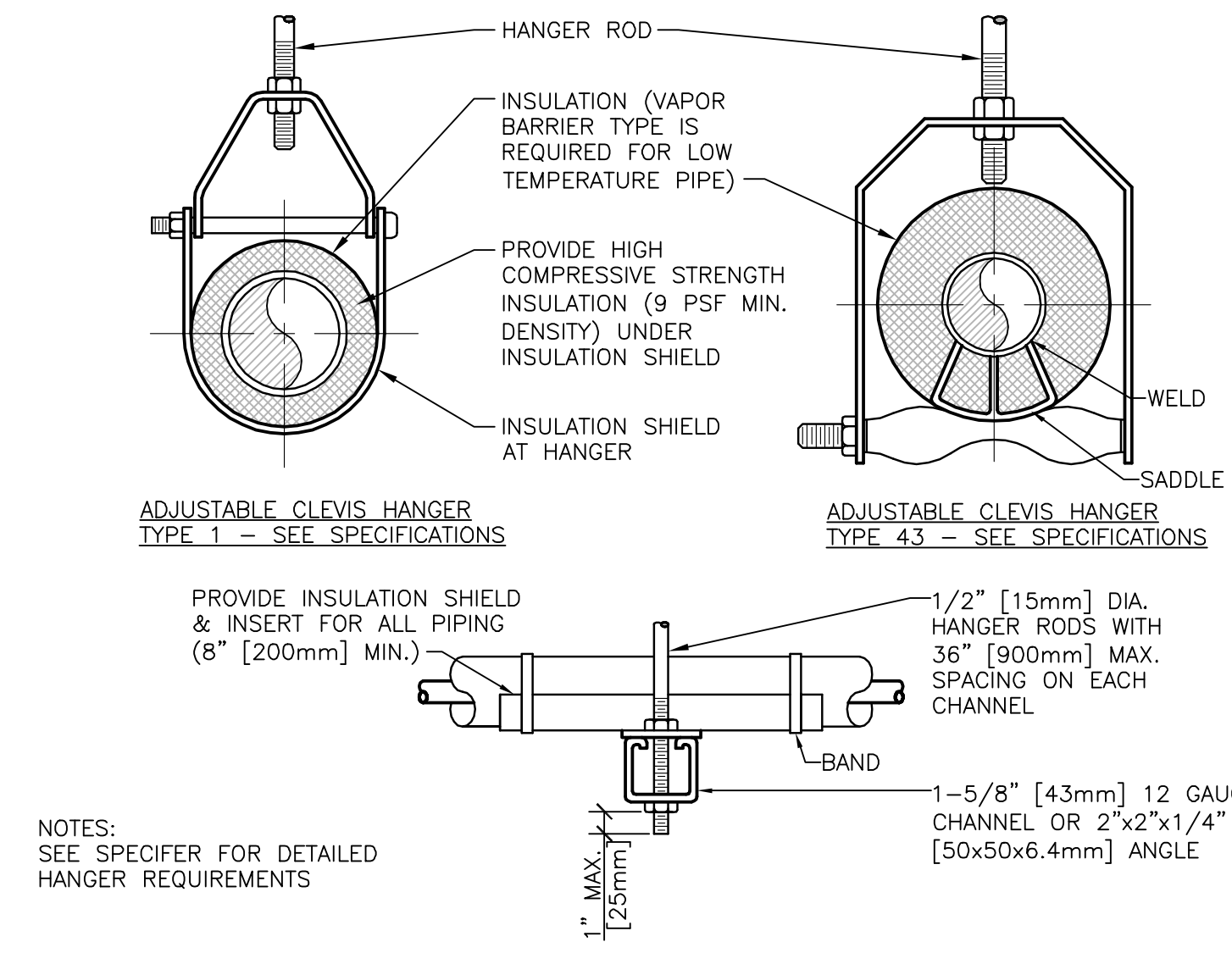


three inches = one foot
one inch = one foot
one half inch = one foot
three quarters inch = one foot
one half inch = one foot
three eighths inch = one foot
one quarter inch = one foot
one eighth inch = one foot



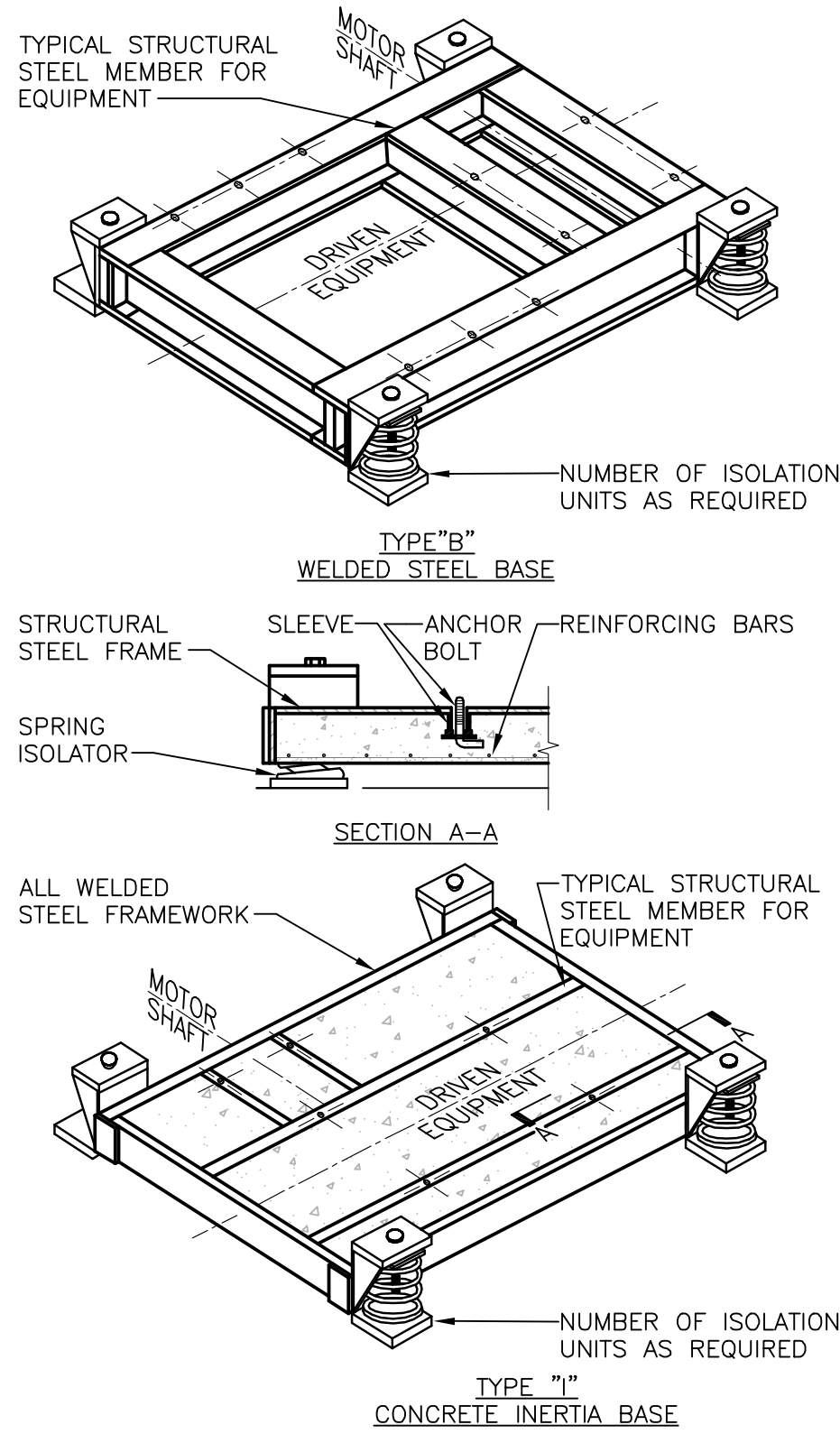
8 SUPPORT ANCHORS FOR PIPE RISERS
N.T.S.



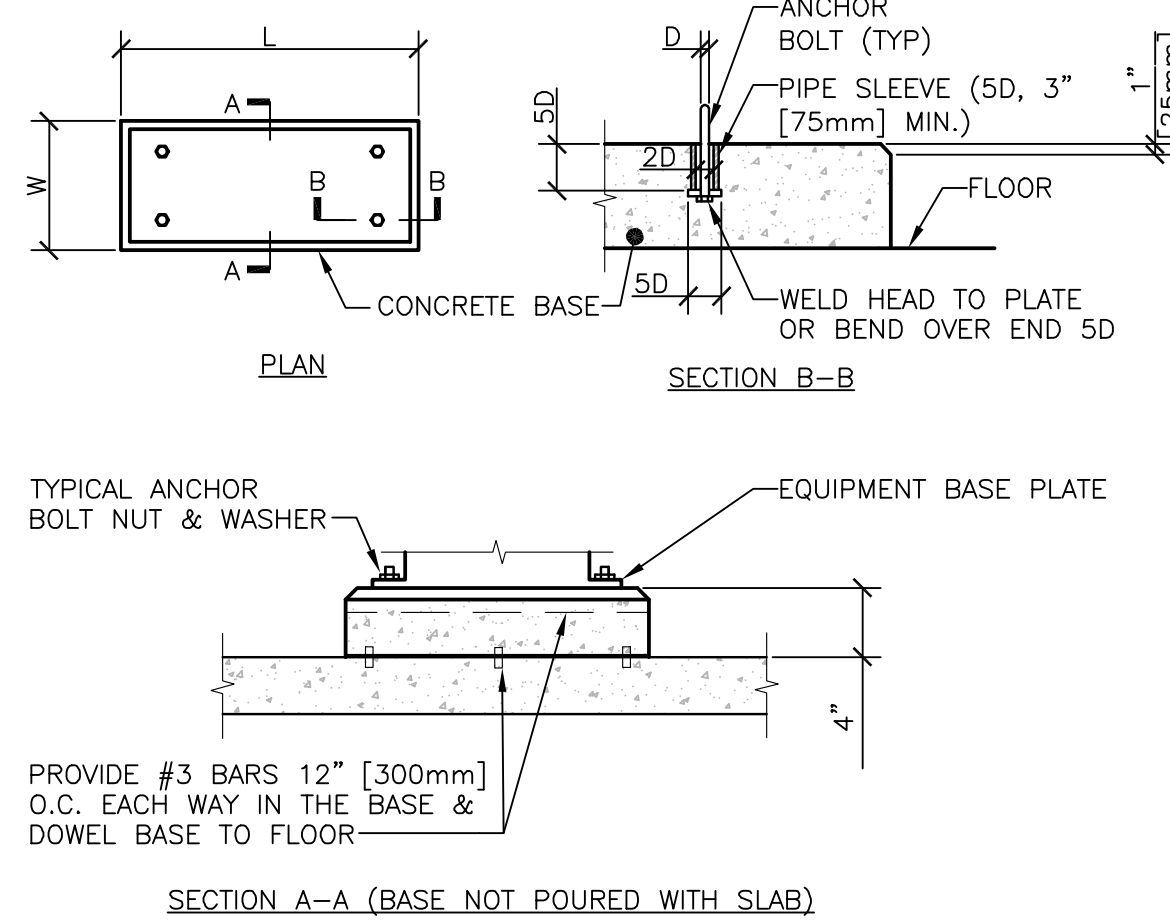
MAXIMUM PIPE/TUBING SUPPORT SPACING																			
NOM. SIZE	IN.	THRU	1	1 1/4	1 1/2	2	2 1/2	3	4	5	6	8	10	12	14	16	18	20	24
	FT.	[20]	[25]	[32]	[40]	[50]	[63]	[75]	[100]	[125]	[150]	[200]	[250]	[300]	[350]	[400]	[450]	[500]	[600]
PIPE	FT.	2100	2100	2100	2700	3000	3400	3700	4100	4900	5200	5800	6700	7000	7600	8200	8500	9100	9600
TUBING	FT.	1500	1800	2100	2400	2400	2700	3000	3700	4000	4100	4900	-	-	-	-	-	-	-

NOTE: FOR TRAPEZE HANGER TAKE SPACING OF SMALLEST SIZE ON TRAPEZE.

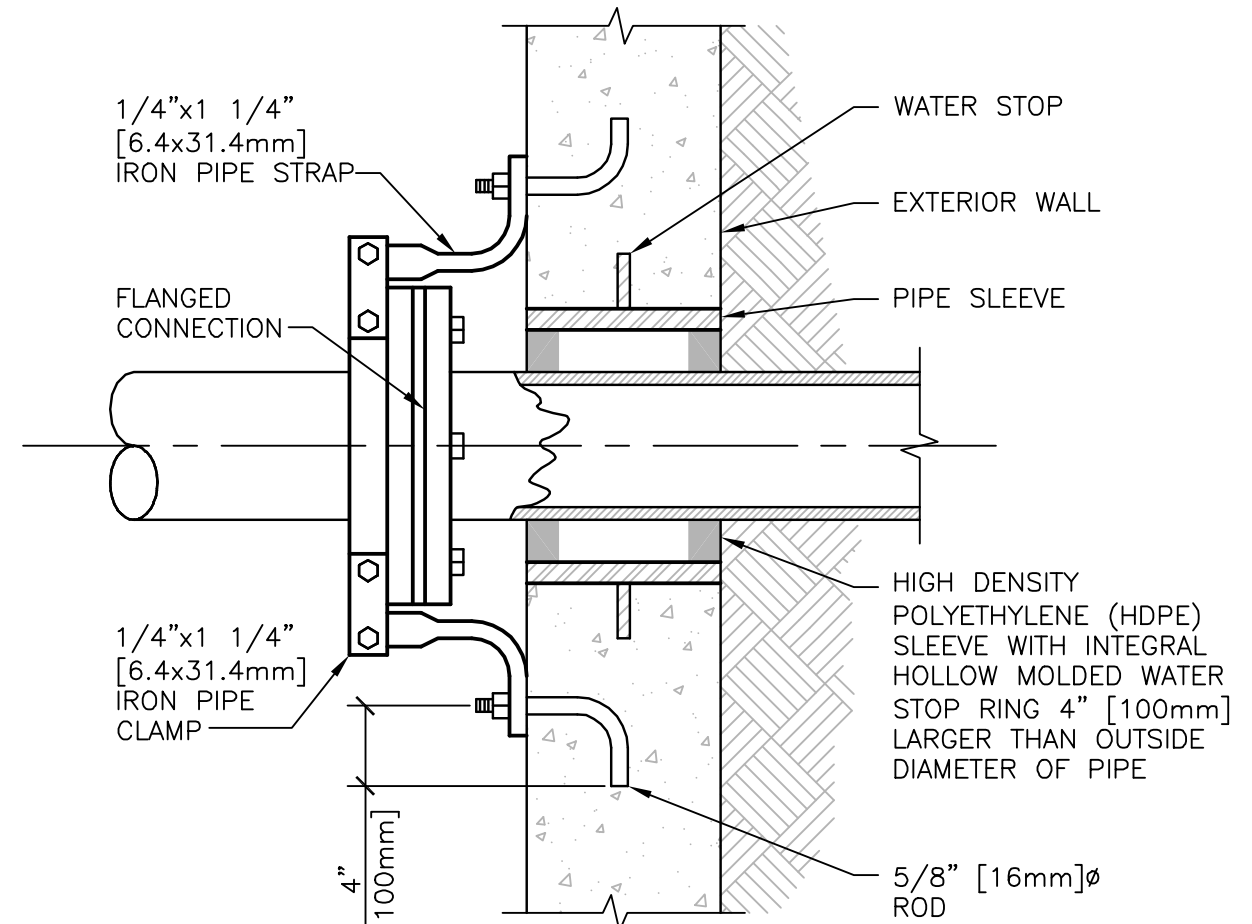
6 PIPE HANGERS
N.T.S.



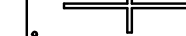
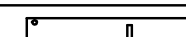
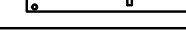
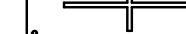
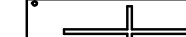
4 VIBRATION ISOLATION BASES
N.T.S.

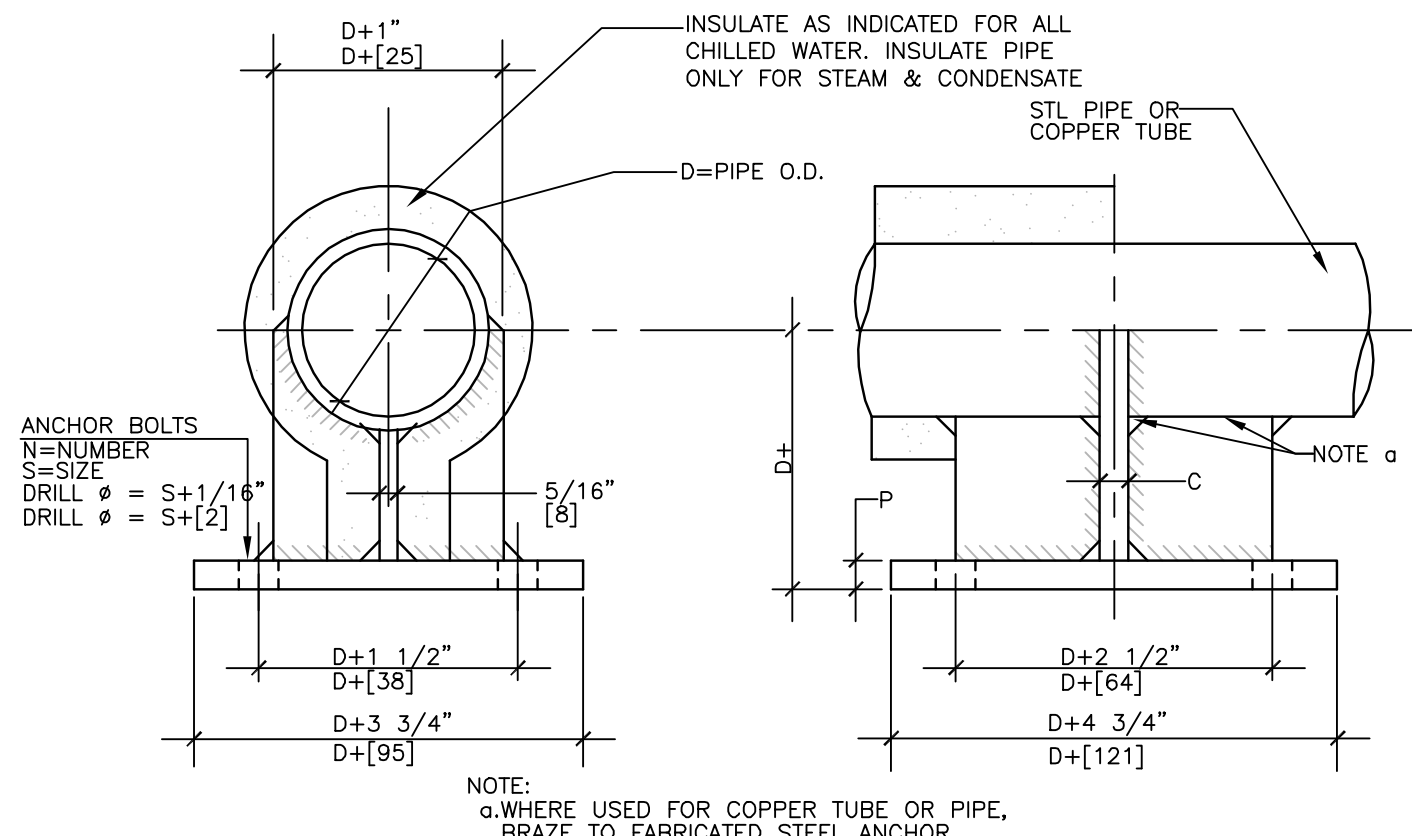


2 CONCRETE EQUIPMENT BASES
N.T.S.

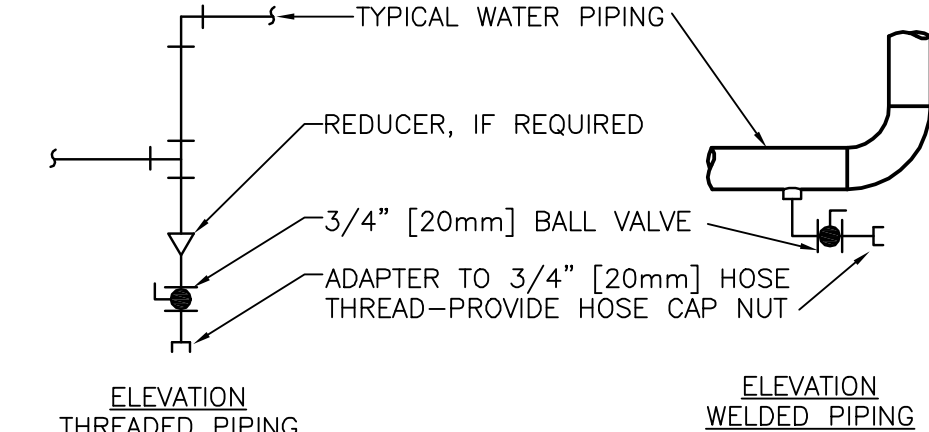


7 PIPE PENETRATIONS
N.T.S.

PIPE ANCHOR SCHEDULE										BOLT PATTERN
D		P		C		N		S		
IN	MM	IN	MM	IN	MM	IN	MM	IN	MM	
4"	102	8"	16	2 1/2"	19	4"	102	3 1/4"	19	
3"	76	2"	13	2 1/2"	13	4"	102	8 5/8"	16	
2 1/2"	64	8"	10	3 1/8"	10	4"	102	8 1/8"	16	
2"	51	3 3/8"	10	3 1/8"	10	4"	102	8 1/8"	16	
1 1/2"	38	3 3/8"	10	1 1/4"	6	4"	102	1 1/2"	13	

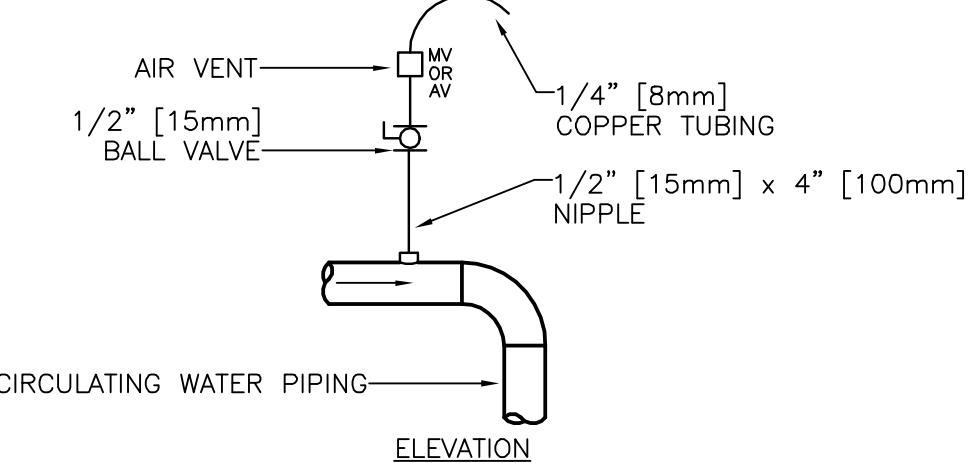


5 SMALL PIPE ANCHOR 1/2" - 4"
N.T.S.



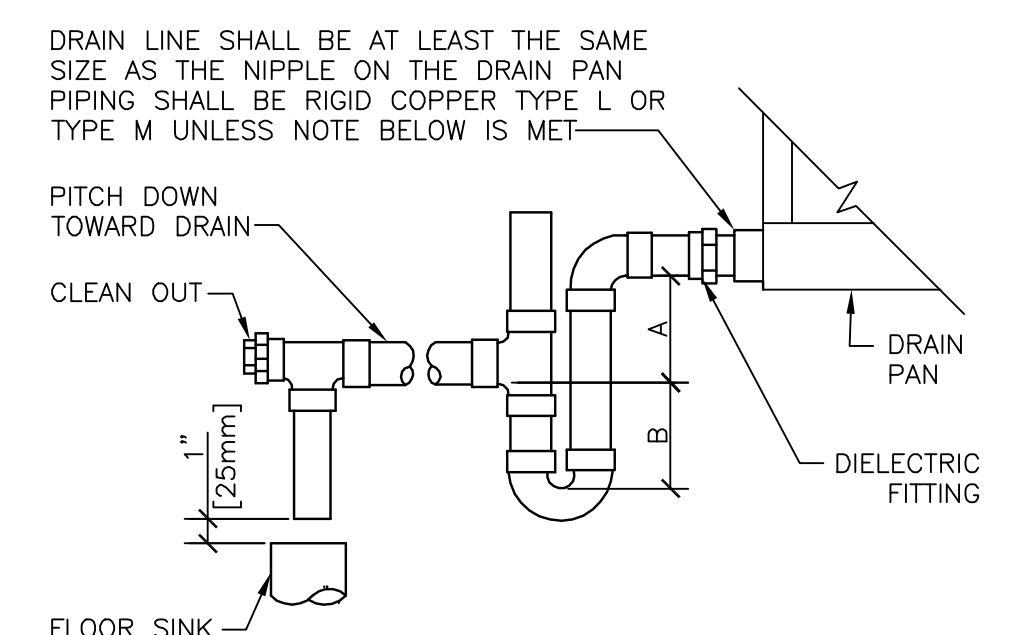
TYPICAL CHILLED AND HOT WATER PIPING DRAIN VALVE CONNECTIONS

- NOTES:
1. DRAIN ALL LOW POINTS AS INDICATED ABOVE.
 2. WHERE SCALE POCKETS ARE SHOWN ON PIPE RISER DIAGRAMS AND/OR PLANS LOCATE DRAIN AT BOTTOM OF SCALE POCKET.



- NOTES:
1. VENT ALL HIGH POINTS INDICATED ABOVE.
 2. IF AUTOMATIC AIR VENTS ARE USED, PIPE DISCHARGE TO DRAIN.

3 DRAIN VALVE AND AIR VENT CONNECTIONS (HYDRONIC SYSTEMS)
N.T.S.



UNIT TYPE

	A	B
DRAW THRU	2" [50mm] PLUS X	X
BLOW THRU	1" [25mm] MINIMUM	2X

WHERE X = STATIC PRESSURE IN PAN

1 AIR HANDLING UNIT DRAIN TRAP DETAIL
N.T.S.