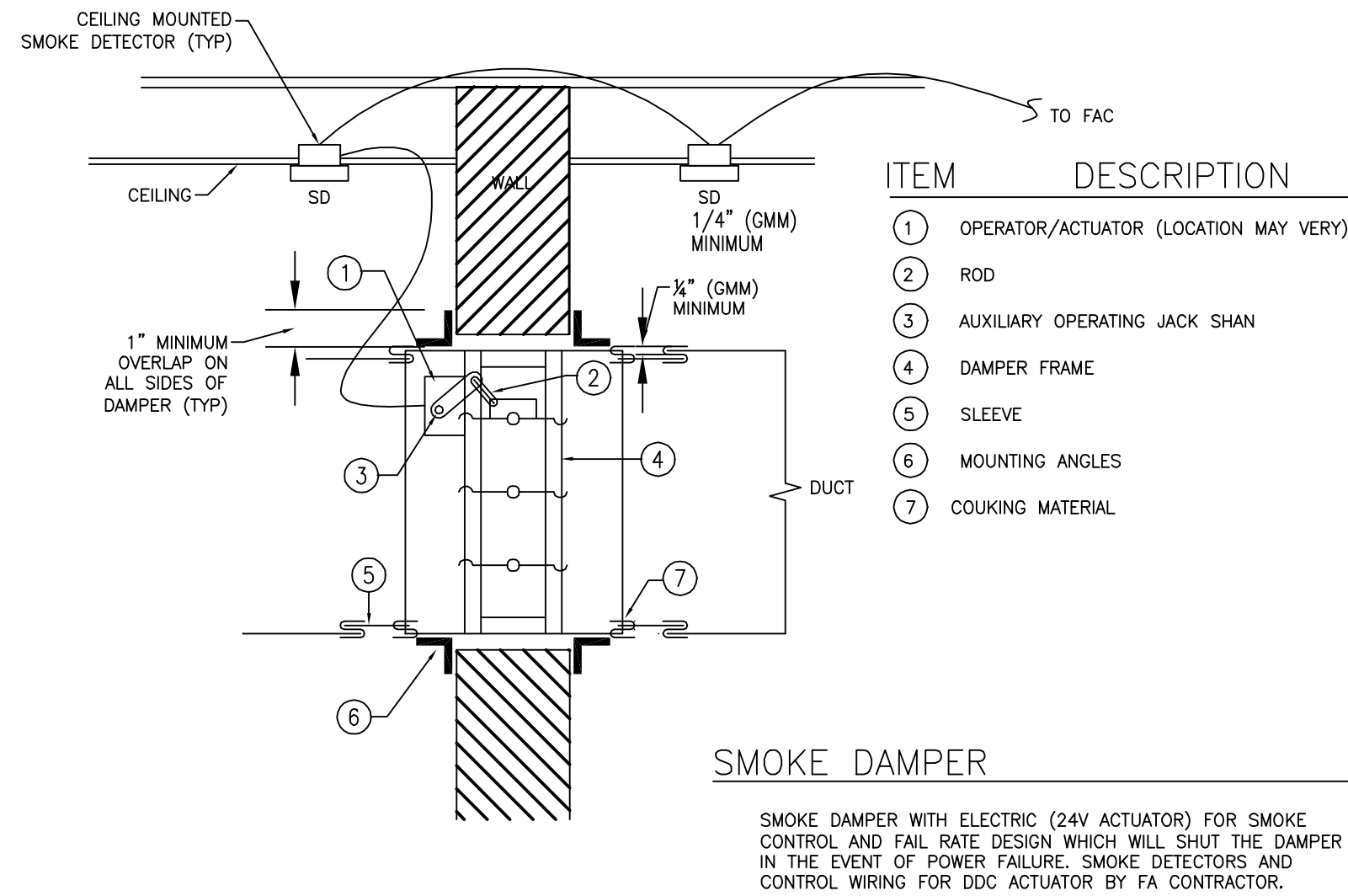
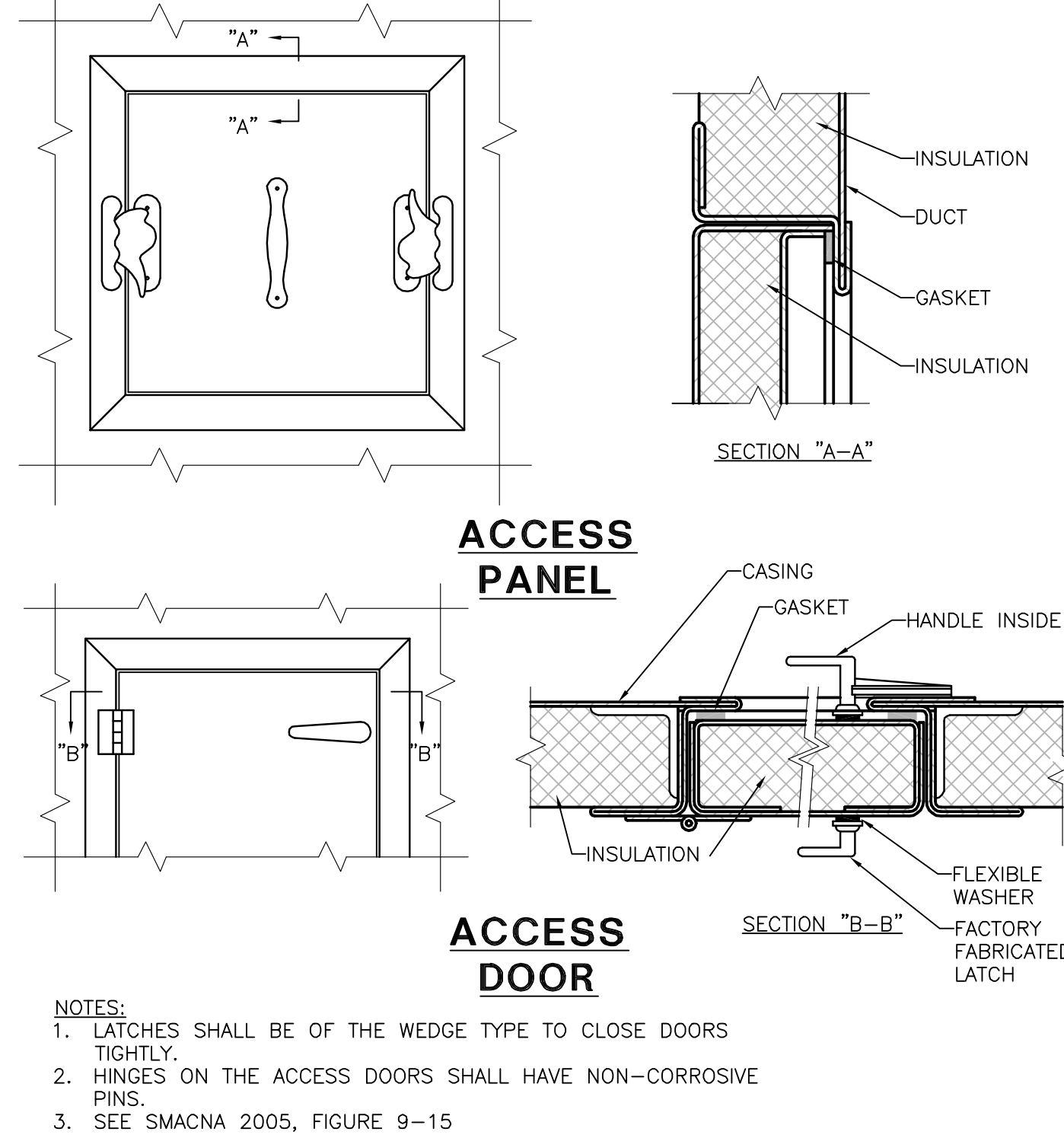


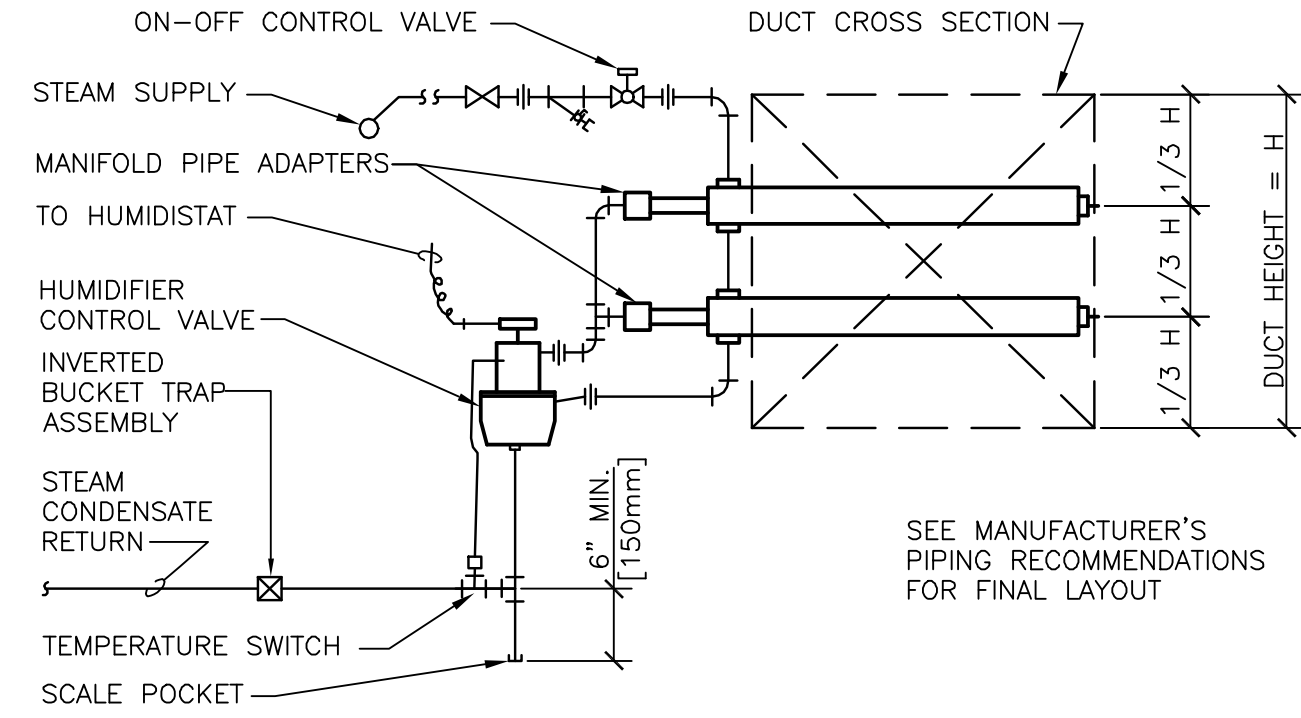
three inches = one foot  
one and one half inches = one foot  
one inch = one foot  
three quarters inch = one foot  
one half inch = one foot  
three eighths inch = one foot  
one eighth inch = one foot  
one quarter inch = one foot  
one eighth inch = one foot



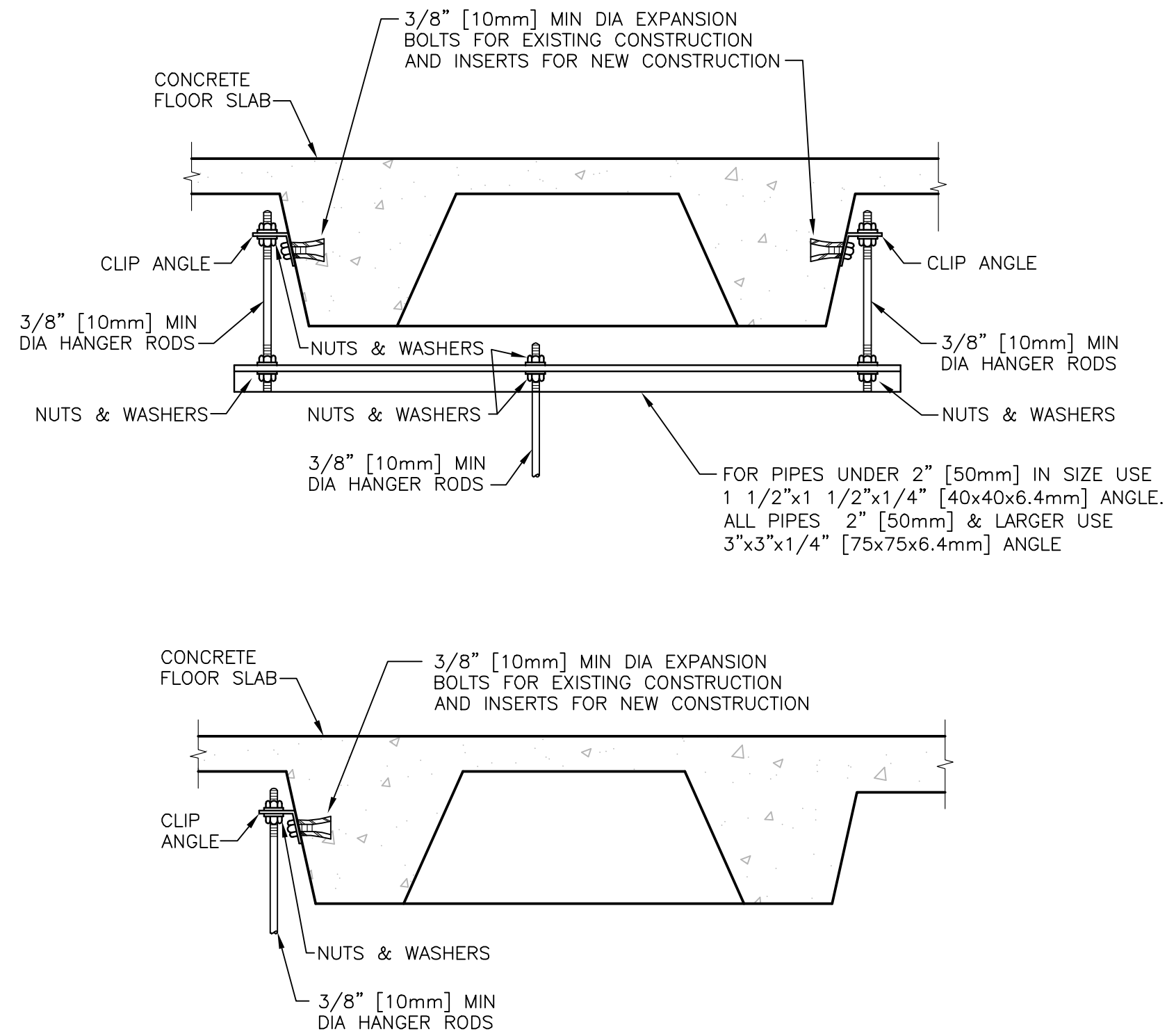
8 SMOKE DAMPER  
N.T.S.



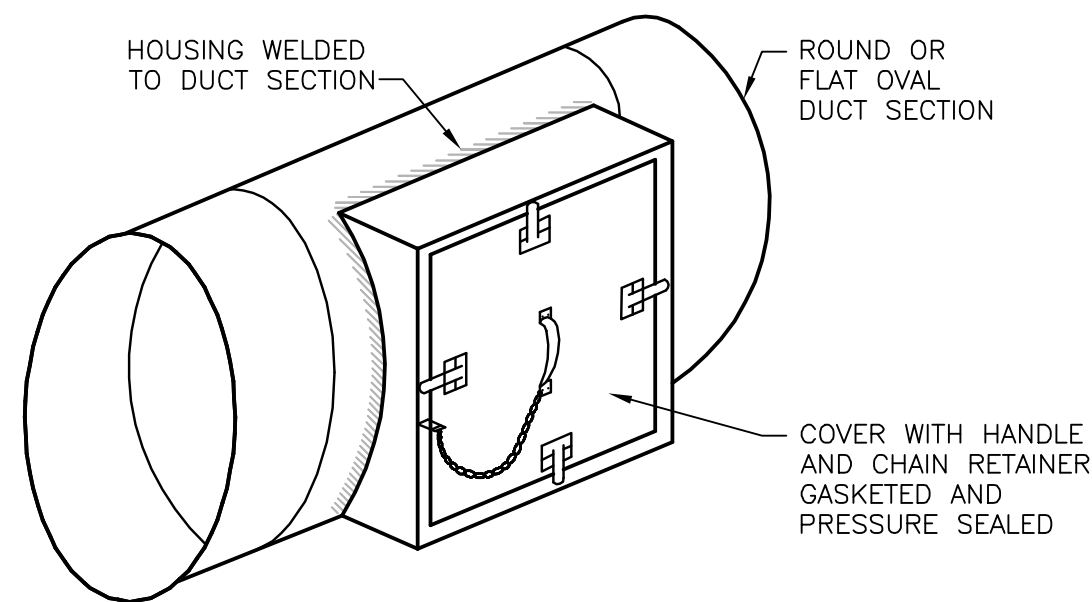
6 ACCESS PANELS  
N.T.S.



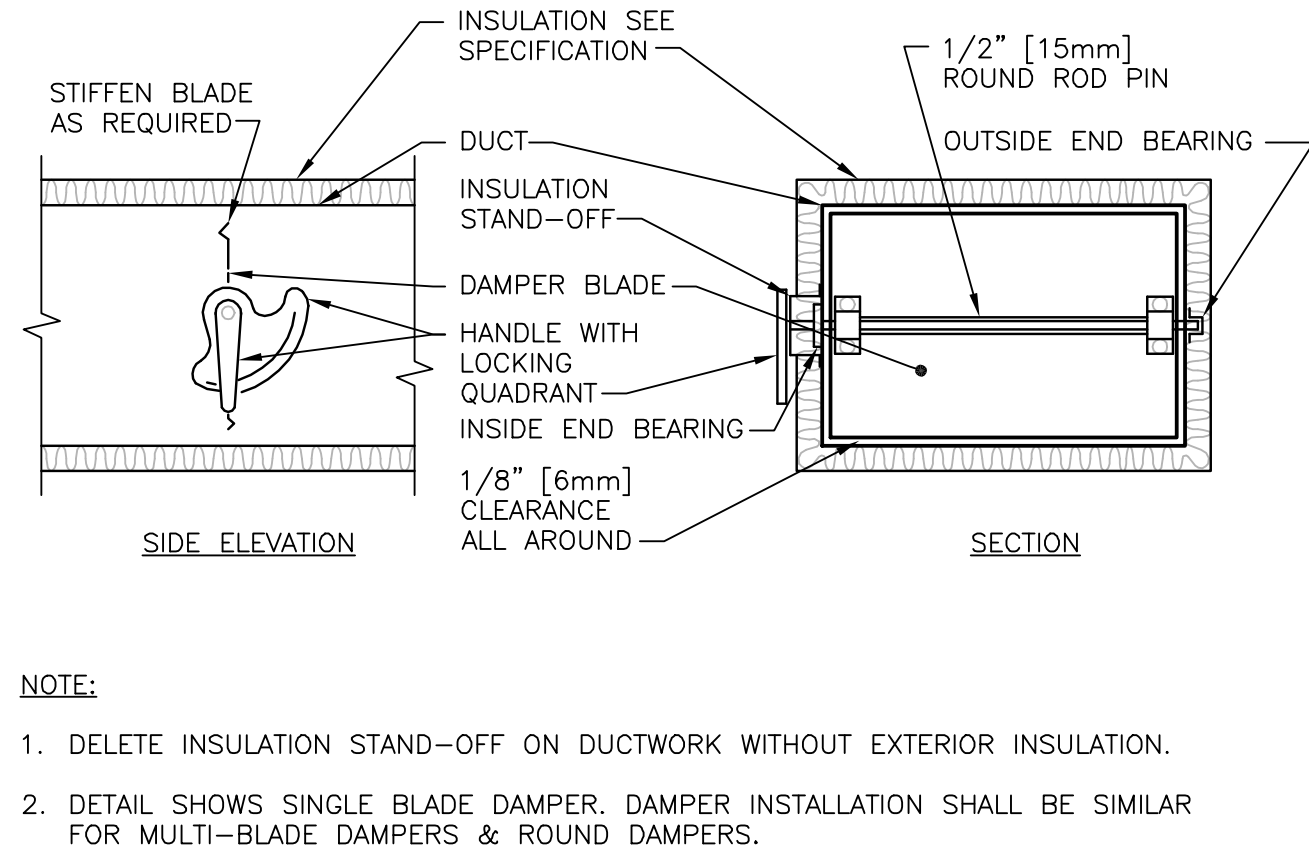
4 STEAM HUMIDIFIER - PIPING CONNECTIONS  
N.T.S.



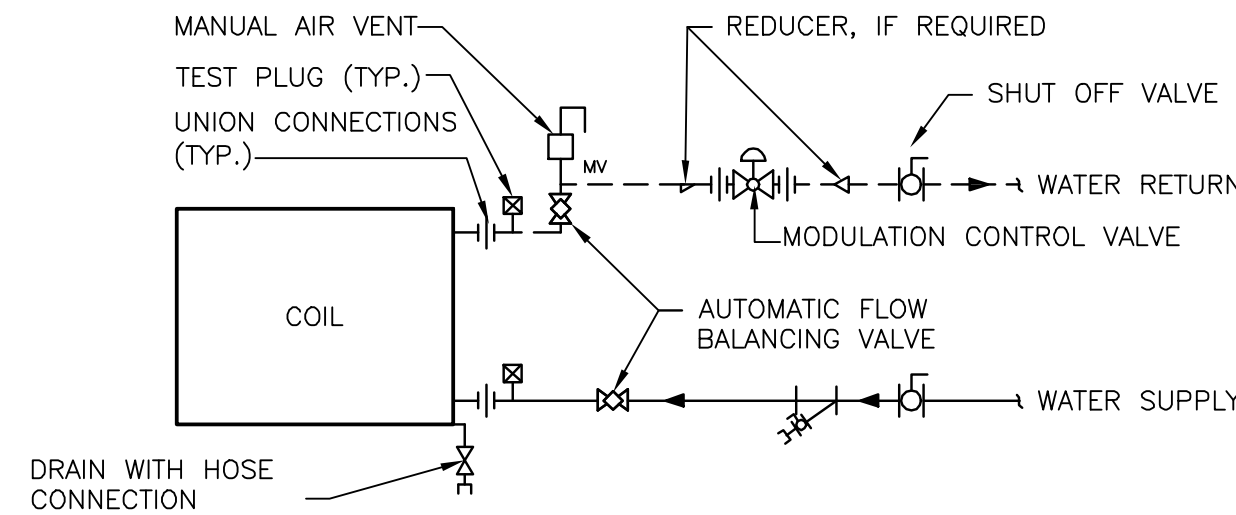
2 SECURING HANGER RODS IN CONCRETE  
N.T.S.



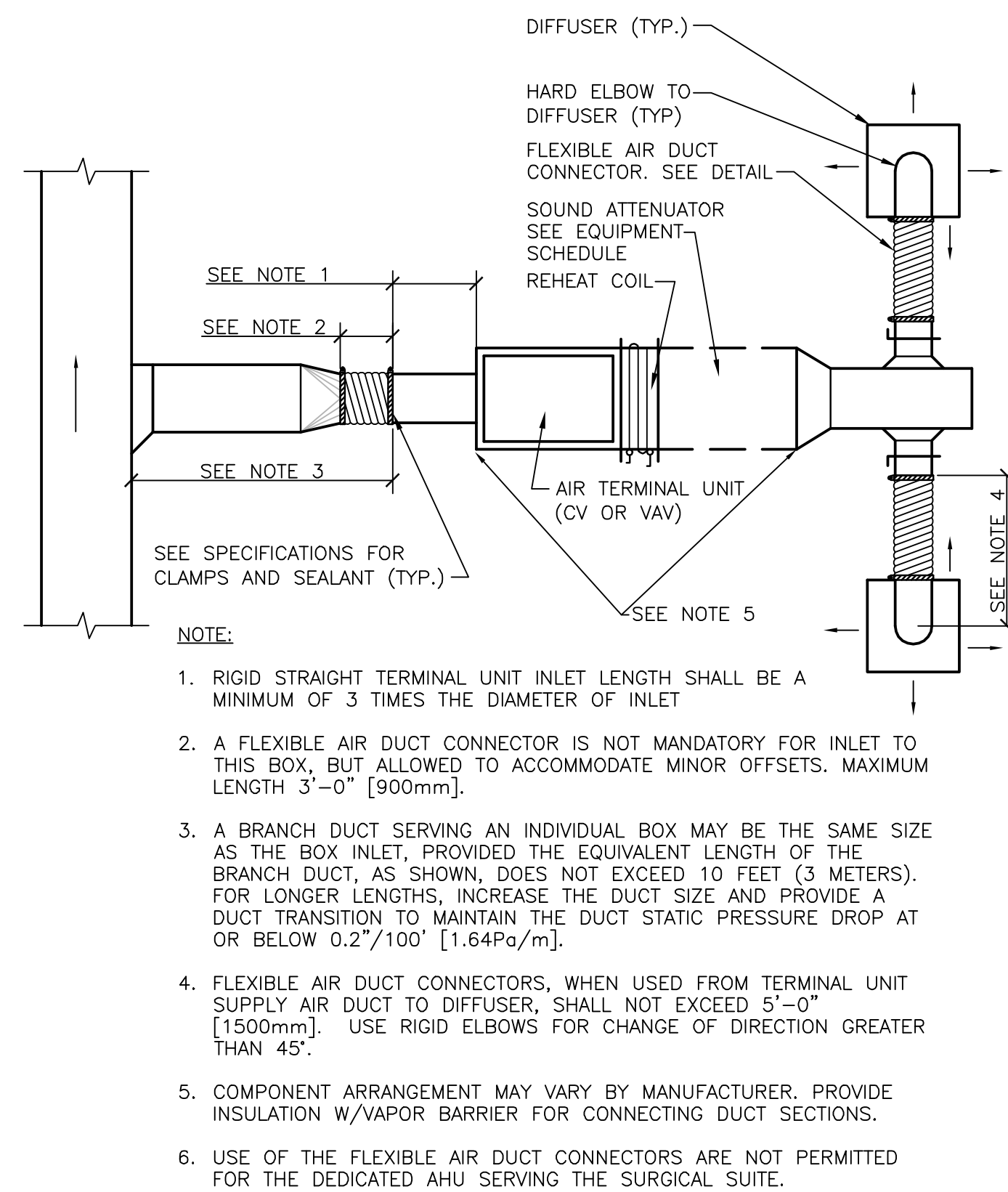
7 ACCESS PANELS - SPIRAL DUCTWORK  
N.T.S.



5 VOLUME DAMPERS  
N.T.S.



3 TERMINAL UNIT WATER COILS - PIPING CONNECTIONS  
N.T.S.



1 DUCT CONNECTIONS - AIR TERMINAL UNITS  
N.T.S.