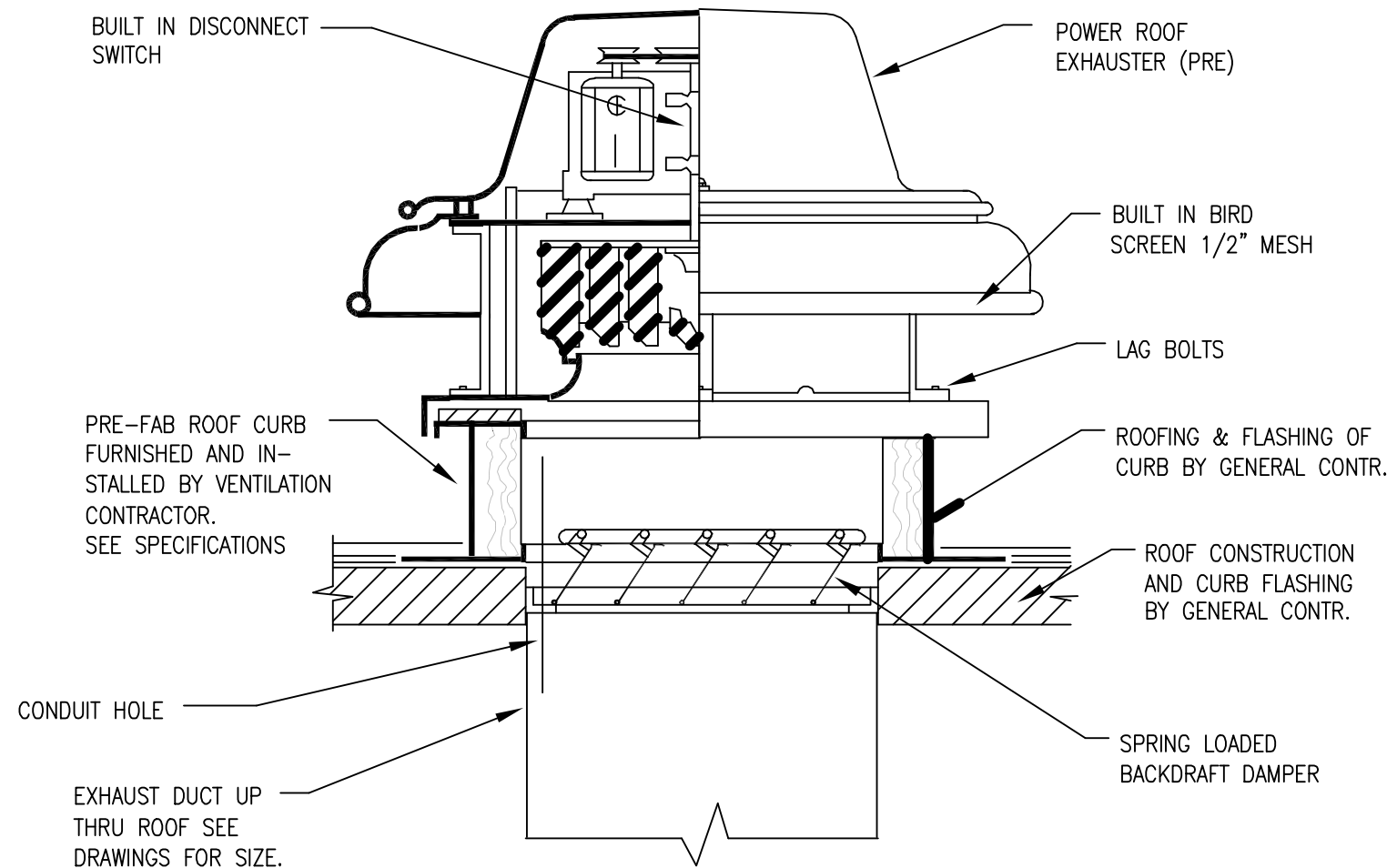
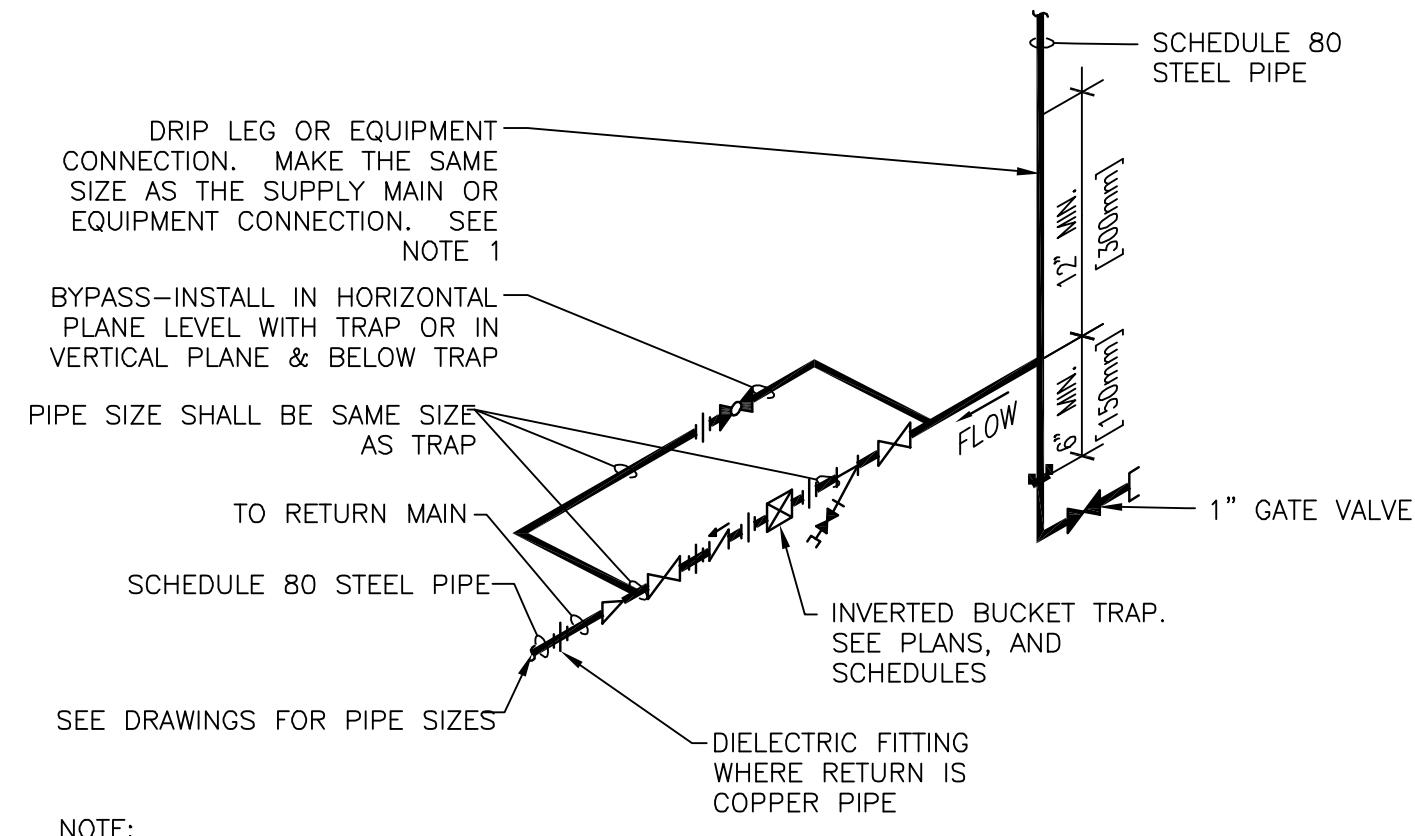


three inches = one foot
one and one half inches = one foot
one inch = one foot
three quarters inch = one foot
one half inch = one foot
three eighths inch = one foot
one quarter inch = one foot
one eighth inch = one foot

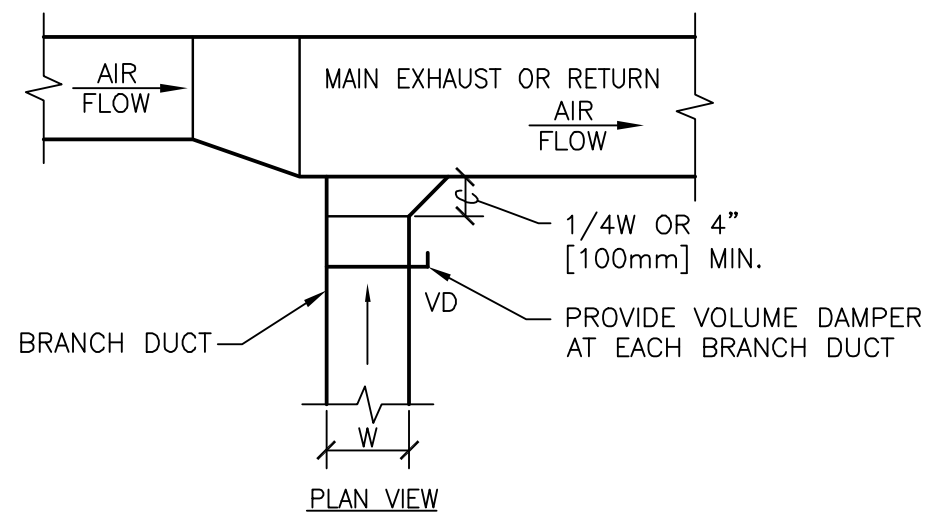


6 ROOF EXHAUST FAN DETAIL
N.T.S.

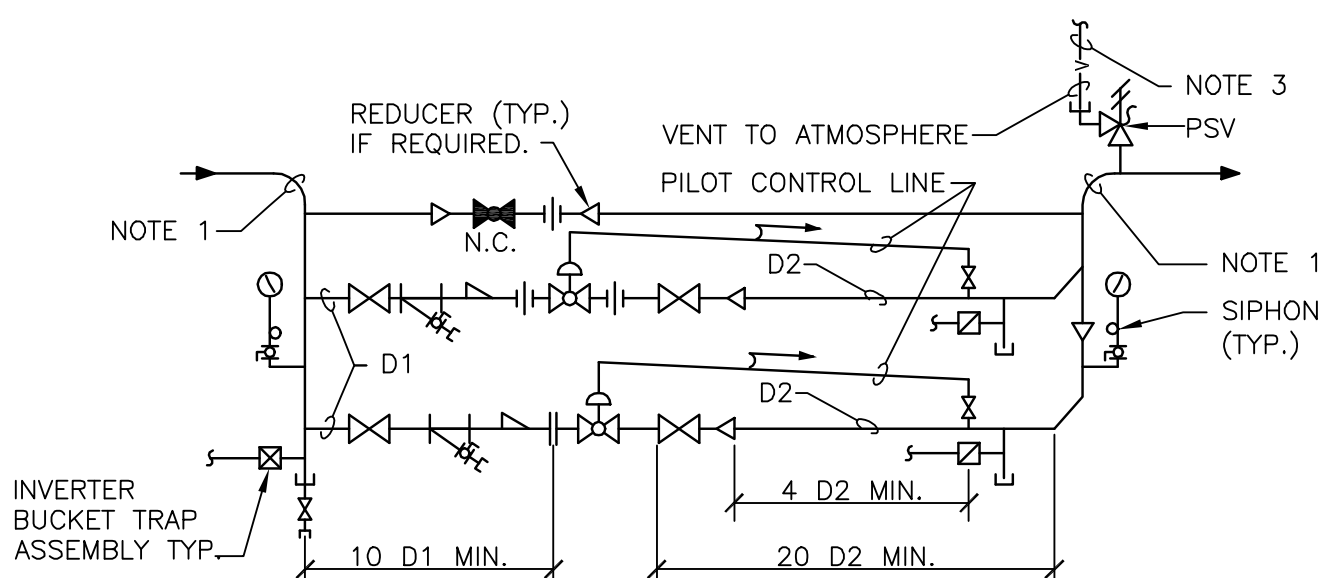


- NOTE:
1. ALL DRIP POINTS ON STEAM MAINS SHALL BE PROVIDED WITH A 12" MINIMUM HIGH DRIPL LEG FROM BOTTOM OF STEAM MAIN TO TRAP INLET. DRIPL LEG SHALL HAVE 6" SCALE POCKET BELOW TRAP INLET.
 2. PROVIDE BYPASS PIPING.

4 INVERTED BUCKET STEAM TRAP ASSEMBLY
N.T.S.

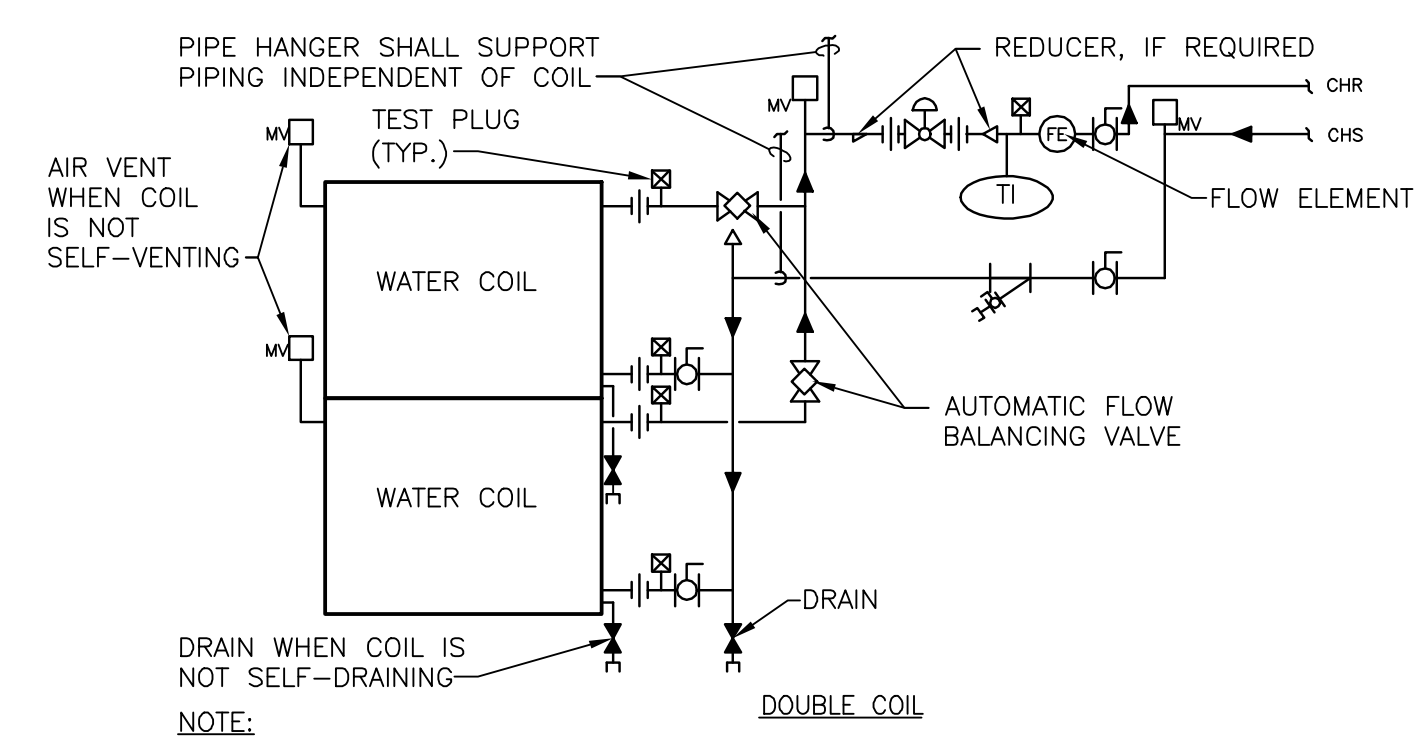


2 EXHAUST OR RETURN BRANCH DUCTWORK
N.T.S.



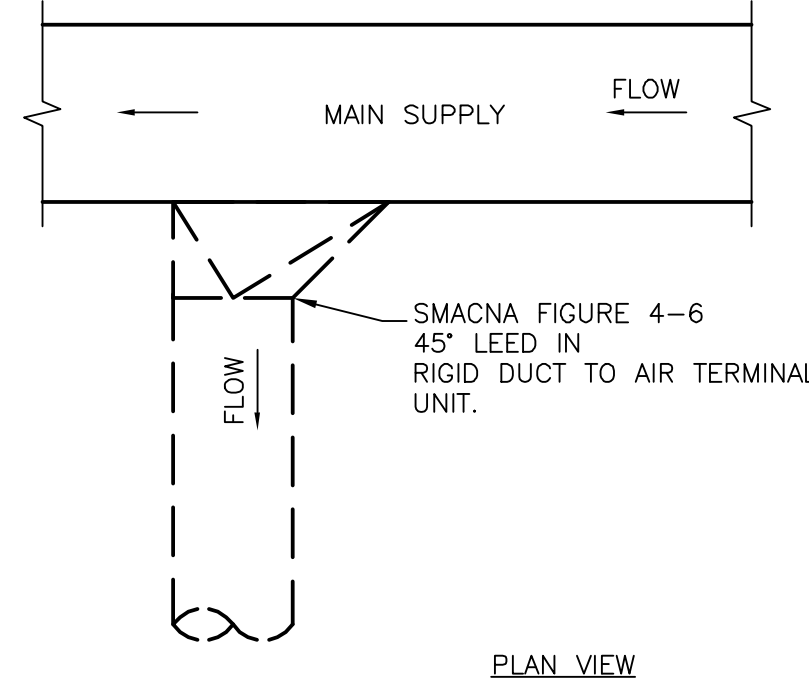
- NOTE:
1. SEE FLOOR PLANS FOR PIPE SIZES.
 2. SEE EQUIPMENT SCHEDULES FOR VALVE DATA AND PIPE SIZES D1 AND D2. INSTALL VALVES AS RECOMMENDED BY MANUFACTURER.
 3. MAKE BYPASS VALVE DISCHARGE PIPE THE SAME SIZE AS D2 FOR THE LARGEST PRV.
 4. PROVIDE NECESSARY UNIONS FOR THE REMOVAL OF VALVE WITH SCREWED CONNECTIONS.

5 STEAM PRESSURE REDUCING STATION DOUBLE VALVE (1/3 AND 2/3)
N.T.S.



- NOTE:
1. WHEN COIL IS INCLUDED IN CASING MOUNTED ON VIBRATION ISOLATORS THE FIRST 2 HANGERS FOR EACH PIPE SHALL BE SPRING & NEOPRENE TYPE. TYPE "H" FOR 4" [100mm] PIPE & SMALLER. TYPE "H-P" FOR 5" [125mm] PIPE & LARGER.
 2. PIPING SHALL BE INSTALLED IN SUCH MANNER THAT IT WILL NOT BLOCK THE SWING OR USE OF ACCESS DOORS OR PANELS; NEITHER SHALL IT BLOCK THE SERVICING OF FILTERS, VALVES, OR EQUIPMENT.
 3. THE FLOW ELEMENT MAY BE INSTALLED IN THE SUPPLY PIPING IF THE REQUIRED MINIMUM UPSTREAM AND DOWNSTREAM DIMENSIONS CANNOT BE OBTAINED IN THE RETURN PIPING.

3 CHILLED WATER COILS - PIPING CONNECTIONS
N.T.S.



1 ALTERNATE SUPPLY DUCT TAKE-OFF - AIR TERMINAL UNITS
N.T.S.

<div>Revisions</div> <div>Date</div>		<div>CONSULTANTS:</div> <div><div>The Estopinal Group CONSULTING ENGINEERING ARCHITECTS</div><div>820 Jordan Street, Suite 507 tel. 318.424.3700 Shreveport, LA 71101 fax 318.424.3764</div></div>	<div></div>	<div>PROJECT MANAGERS AND ENGINEERS:</div> <div><div>A VETERAN OWNED COMPANY</div><div>3 EXECUTIVE COURT, UNIT 4 SOUTH BARRINGTON, IL 60010</div></div>	<div>Drawing Title</div> <div>MECHANICAL DETAILS</div> <div>Approved Project Director</div>	<div>Project Title</div> <div>RENOVATE ED + PRIMARY CARE</div> <div>Location</div> <div>SHREVEPORT VAMC 510 EAST STONER AVE</div> <div>Date</div> <div>01/09/13</div> <div>Checked</div> <div>RM</div> <div>Drawn</div> <div>SL</div>	<div>Project Number</div> <div>667-10-100</div> <div>Building Number</div> <div>1N, 1E</div> <div>Drawing Number</div> <div>M4.4</div> <div>Dwg. 71 of 112</div>	<div>Office of Construction and Facilities Management</div> <div></div> <div>Department of Veterans Affairs</div>
--------------------------------------	--	--	-------------	---	---	---	--	---