

ROOM NAME SCHEDULE	
ROOM NUMBER	ROOM NAME
IN2	TELEPHONE SWITCHROOM
IN3	TLT-PUB
IN4	TLT-PUB
IN5	STORAGE
IN6	WAITING
IN8	REGISTRATION
IN9	LIFE SUPPORT
IN10	LIFE SUPPORT-6
IN11	LIFE SUPPORT 5
IN11A	TLT-PT
IN12	LIFE SUPPORT-4
IN13	LIFE SUPPORT-3
IN14	LIFE SUPPORT-2
IN15	LIFE SUPPORT-1
IN16	CLEAN SUPPLY
IN17	LIFE SUPPORT-9
IN18	LIFE SUPPORT-10
IN19	NURSE STATION
IN20	MEDS
IN21	TRIAGE-1
IN22	TRIAGE-2
IN24	FAST TRACK
IN23	SOILED UTILITY
IN24A	ELEC.
IN24B	TLT-MALE
IN24C	TLT-FEMALE
IN24D	WORK
IN24E	BREAK
IN25	ISKP.
W26A	POLICE
W26D	OFFICE/STORAGE
W27B	STORAGE
W27C	NURSE MANAGER
W27D	MEDICAL DIRECTOR
IN100	CORRIDOR
IN100A	VESTIBULE
IN200	CORRIDOR

LEGEND	
—	DEMO EXISTING TO REMAIN POINT OF DISCONNECT

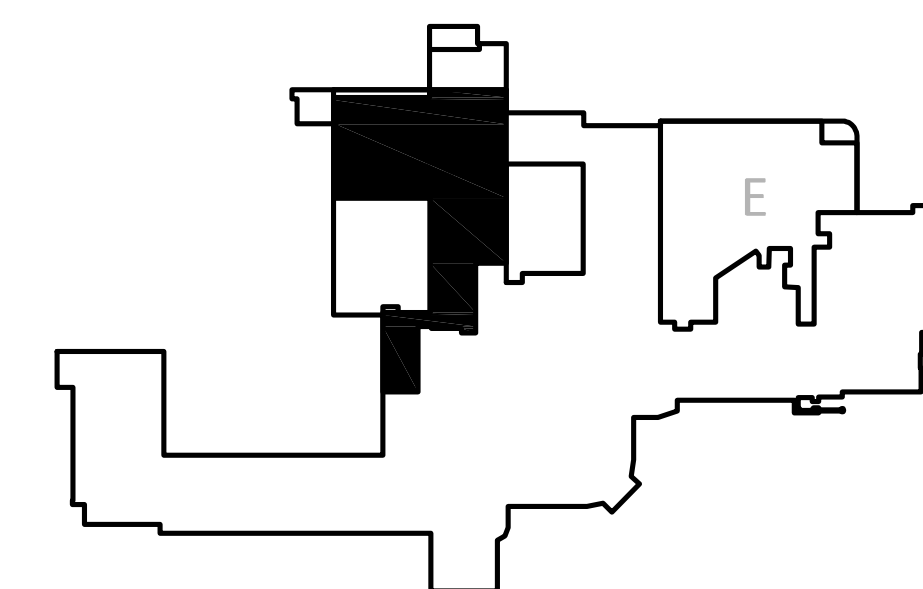
## PLUMBING GENERAL NOTES

1. ALL NEW HORIZONTAL SANITARY PIPING SHOWN IN THIS PLAN ARE ROUTED IN BASEMENT CEILING UNLESS NOTED OTHERWISE.
2. ALL NEW HORIZONTAL VENT PIPING SHOWN IN THIS PLAN ARE ROUTED IN FIRST FLOOR CEILING UNLESS NOTED OTHERWISE.
3. REFER TO SHEET P3A.NE AND P3B.NE FOR PLUMBING FIXTURE ROUGH-IN SIZING.

## PLUMBING KEY NOTES

- 1 2" SAN DOWN TO BASEMENT CEILING.
- 2 4" SAN DOWN TO BASEMENT CEILING.
- 3 RECONNECT 4" SAN BACK TO EXISTING 4" SAN ABOVE BASEMENT CEILING. CONTRACTOR TO FIELD VERIFY LOCATION OF EXISTING 4" SAN PIPING IN FIELD BEFORE RECONNECTION TO NEW.
- 4 NEW 4" SAN BELOW FLOOR TO CONNECT TO EXISTING 4" SAN AS SHOWN ON BASEMENT CEILING. PROVIDE CLEANOUT AT THE END OF EXISTING SAN.

KEYPLAN: FIRST FLOOR



FULLY SPRINKLERED

Scale: AS NOTED

[illegible]