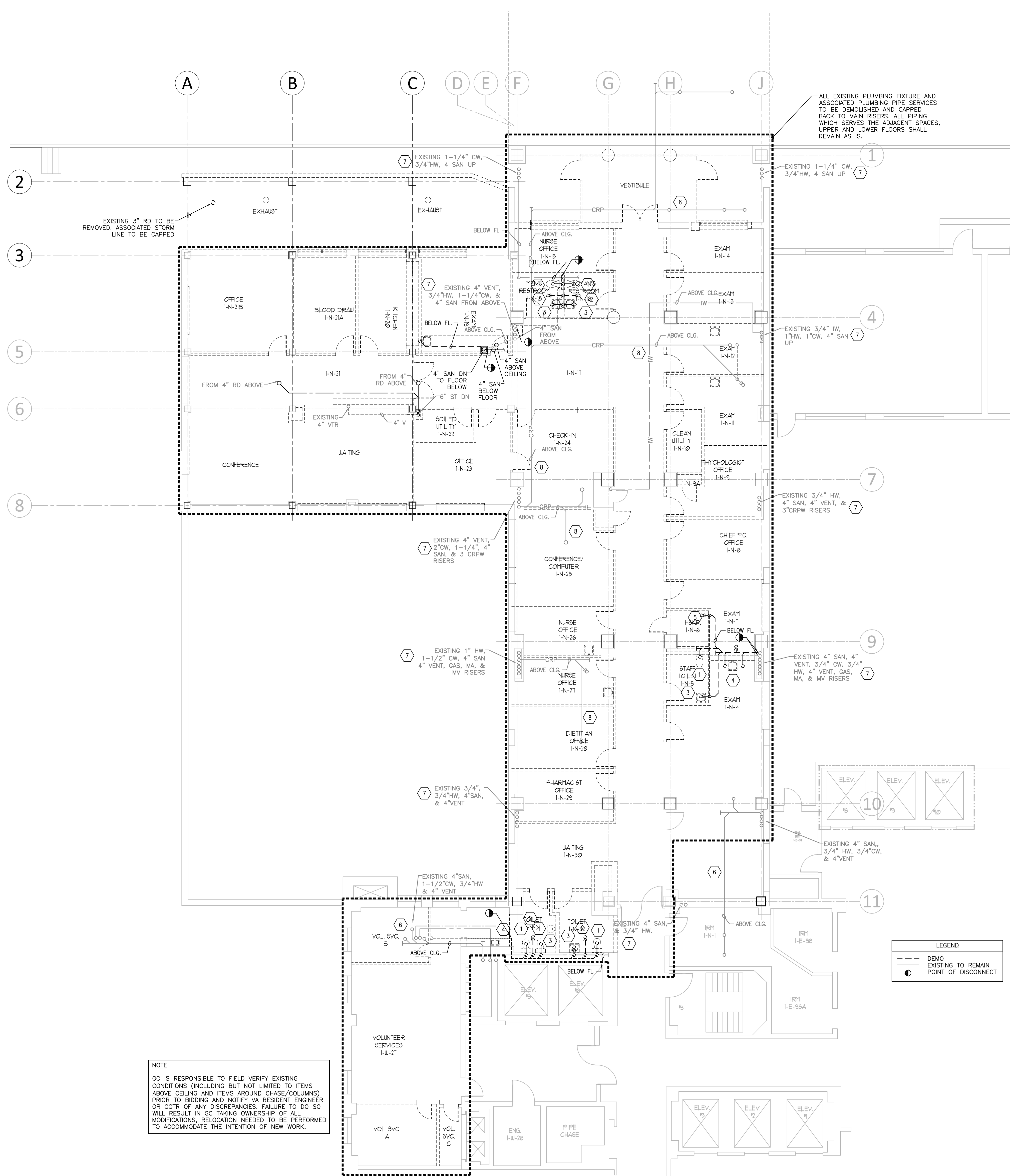


three inches = one foot
one and one half inches = one foot
one inch = one foot
one quarter inch = one foot
three quarters inch = one foot
one half inch = one foot
three eighths inch = one foot
one eighth inch = one foot
one eighth inch = one foot



PLUMBING GENERAL NOTES

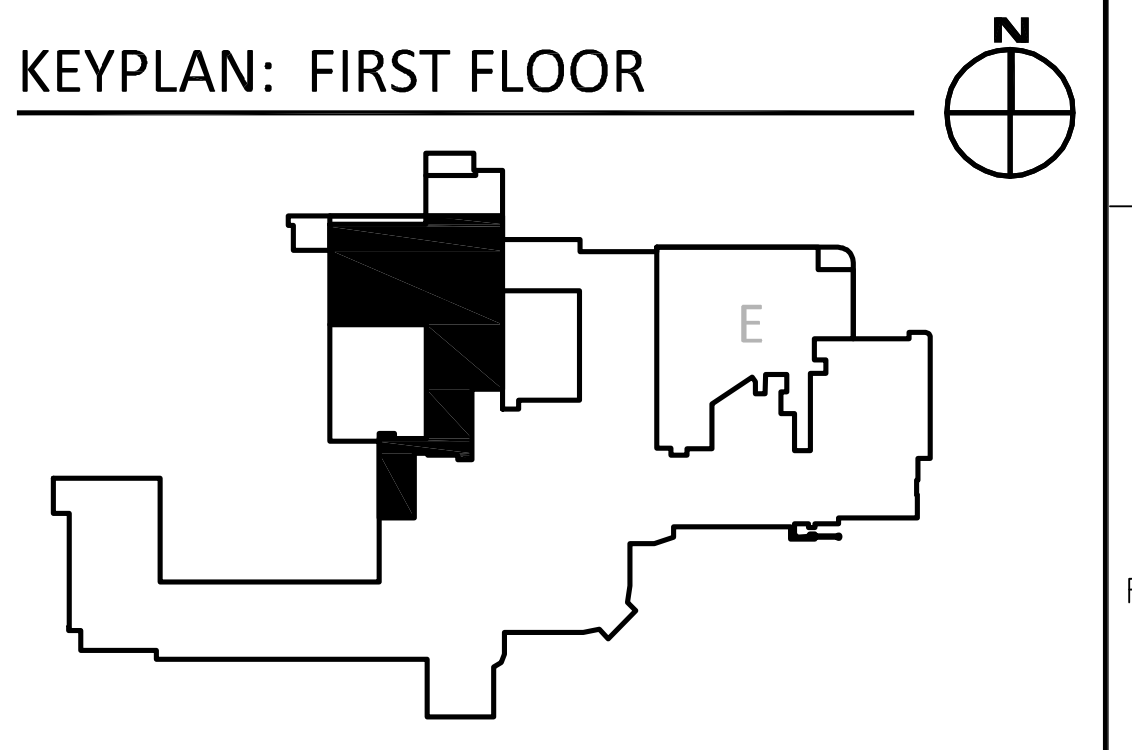
1. ALL DEMOLISHED PIPING SHALL BE CUT BACK TO MAIN LEAVING NO DEAD LEGS OR CAPPED, SEALED AND ABANDONED IN PLACE.
2. ALL NEW HORIZONTAL VENT PIPING SHOWN IN THIS PLAN ARE ROUTED IN FIRST FLOOR CEILING UNLESS NOTED OTHERWISE.

PLUMBING KEY NOTES

- 1 DISCONNECT AND REMOVE EXISTING WATER CLOSET ALONG WITH ITS CARRIER AND ASSOCIATED PIPING SERVING FIXTURE. PATCH FLOORS AND WALLS TO MATCH EXISTING CONDITIONS.
- 2 DISCONNECT AND REMOVE EXISTING FLOOR DRAIN AND CUT BACK AND CAP SANITARY PIPING BACK LEAVING NO DEAD LEGS.
- 3 DISCONNECT AND REMOVE EXISTING LAVATORY ALONG WITH ITS CARRIER AND ASSOCIATED PIPING SERVING FIXTURE. CUT BACK AND CAP SANITARY PIPING BACK TO MAIN LEAVING NO DEAD LEGS.
- 4 DISCONNECT AND REMOVE SINK AND ASSOCIATED PIPING SERVING FIXTURE. CUT BACK AND CAP SANITARY PIPING BACK TO MAIN LEAVING NO DEAD LEGS.
- 5 DISCONNECT AND REMOVE MOP BASIN AND ASSOCIATED PIPING SERVING FIXTURE.
- 6 PIPING SERVING SECOND FLOOR SHALL REMAIN IN ITS ENTIRETY.
- 7 PIPING RISERS TO REMAIN IN ITS ENTIRETY. ANY ABANDONED PIPING SHALL BE CUT BACK TO MAIN RISERS LEAVING NO DEAD LEGS.
- 8 CHEMICAL RESISTANT PIPING TO REMAIN IN ITS ENTIRETY.

NOTE
GC IS RESPONSIBLE TO FIELD VERIFY EXISTING CONDITIONS (INCLUDING BUT NOT LIMITED TO ITEMS ABOVE CEILING AND ITEMS AROUND CHASE/COLUMNS) PRIOR TO BIDDING AND NOTIFY VA RESIDENT ENGINEER OR COTR OF ANY DISCREPANCIES. FAILURE TO DO SO WILL RESULT IN GC TAKING OWNERSHIP OF ALL MODIFICATIONS. RELOCATION NEEDED TO BE PERFORMED TO ACCOMMODATE THE INTENTION OF NEW WORK.

LEGEND
--- DEMO
--- EXISTING TO REMAIN
● POINT OF DISCONNECT



FULLY SPRINKLERED
Scale: AS NOTED

CONSULTANTS: The Estopinal Group 820 Jordan Street, Suite 507 tel. 318.424.3700 Shreveport, LA 71101 fax 318.424.3764		PROJECT MANAGERS AND ENGINEERS: A VETERAN OWNED COMPANY 3 EXECUTIVE COURT, UNIT 4 SOUTH BARRINGTON, IL 60010		Drawing Title NORTH FIRST FLOOR PLUMBING DEMO		Project Title RENOVATE ED + PRIMARY CARE		Project Number 667-10-100		Office of Construction and Facilities Management 	
Revisions				Approved Project Director		Location SHREVEPORT VAMC 510 EAST STONER AVE		Building Number 1N, 1E			
Date						Date 01/09/13		Drawing Number P2.N1 Dwg. 80 of 112			