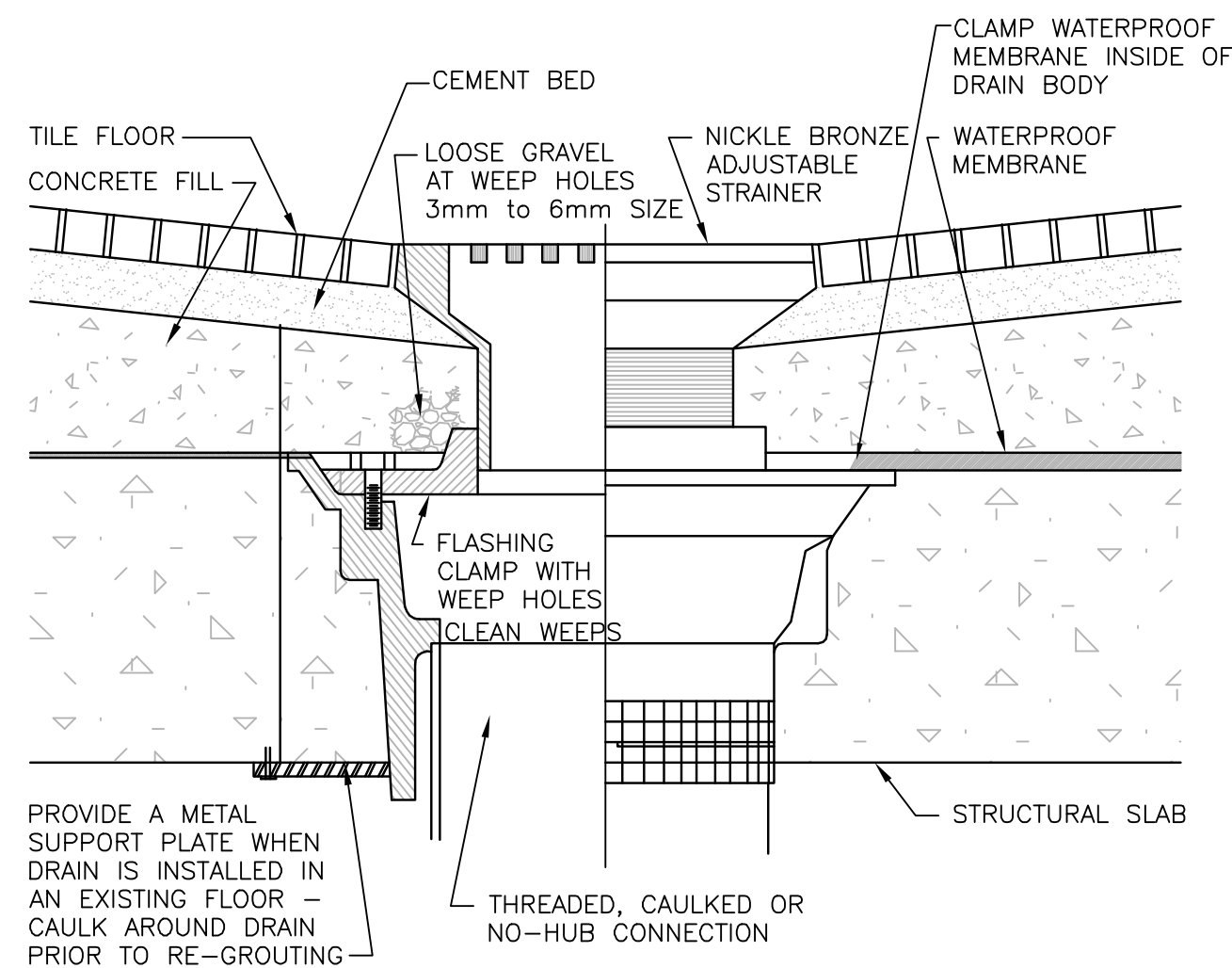
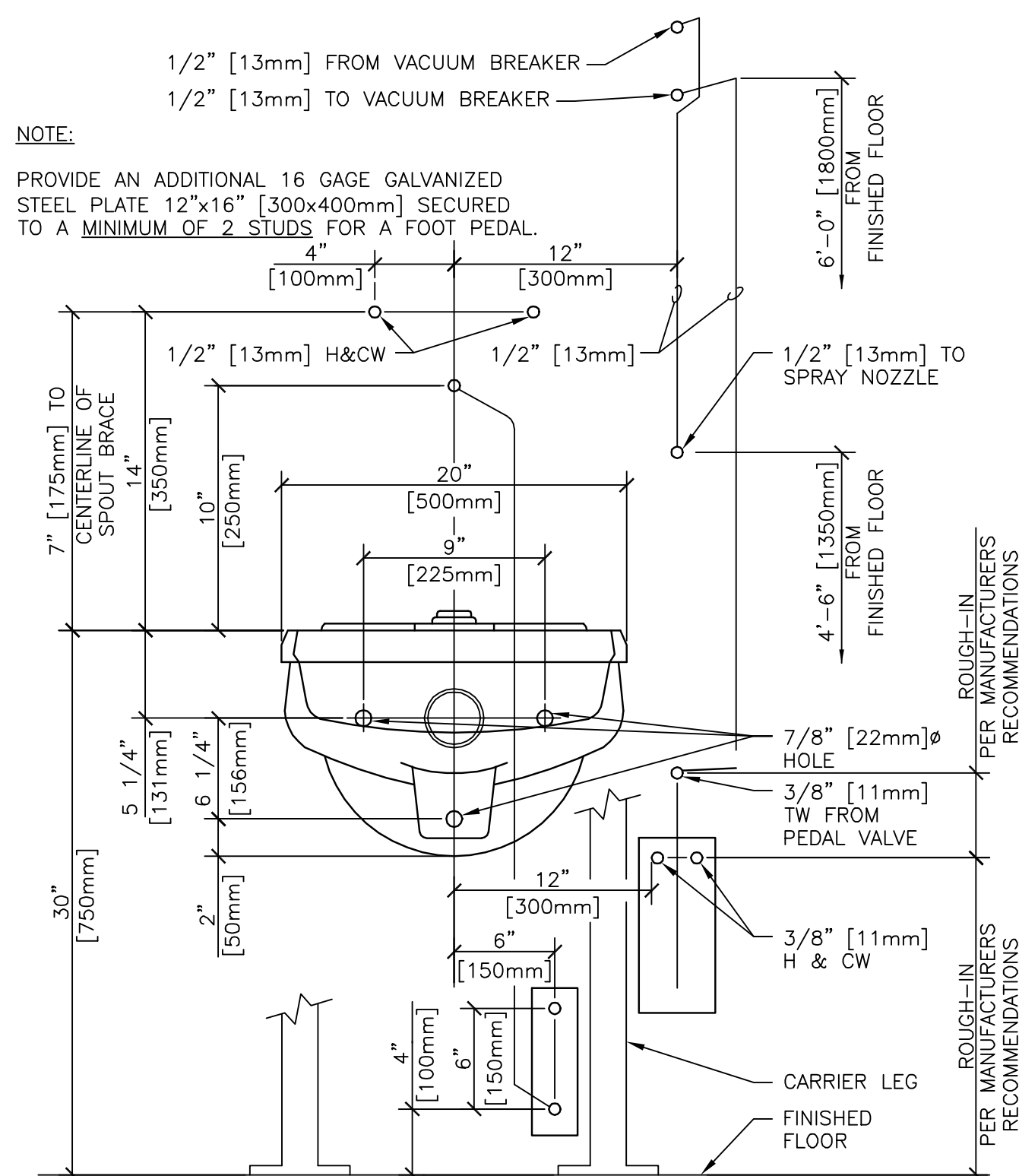


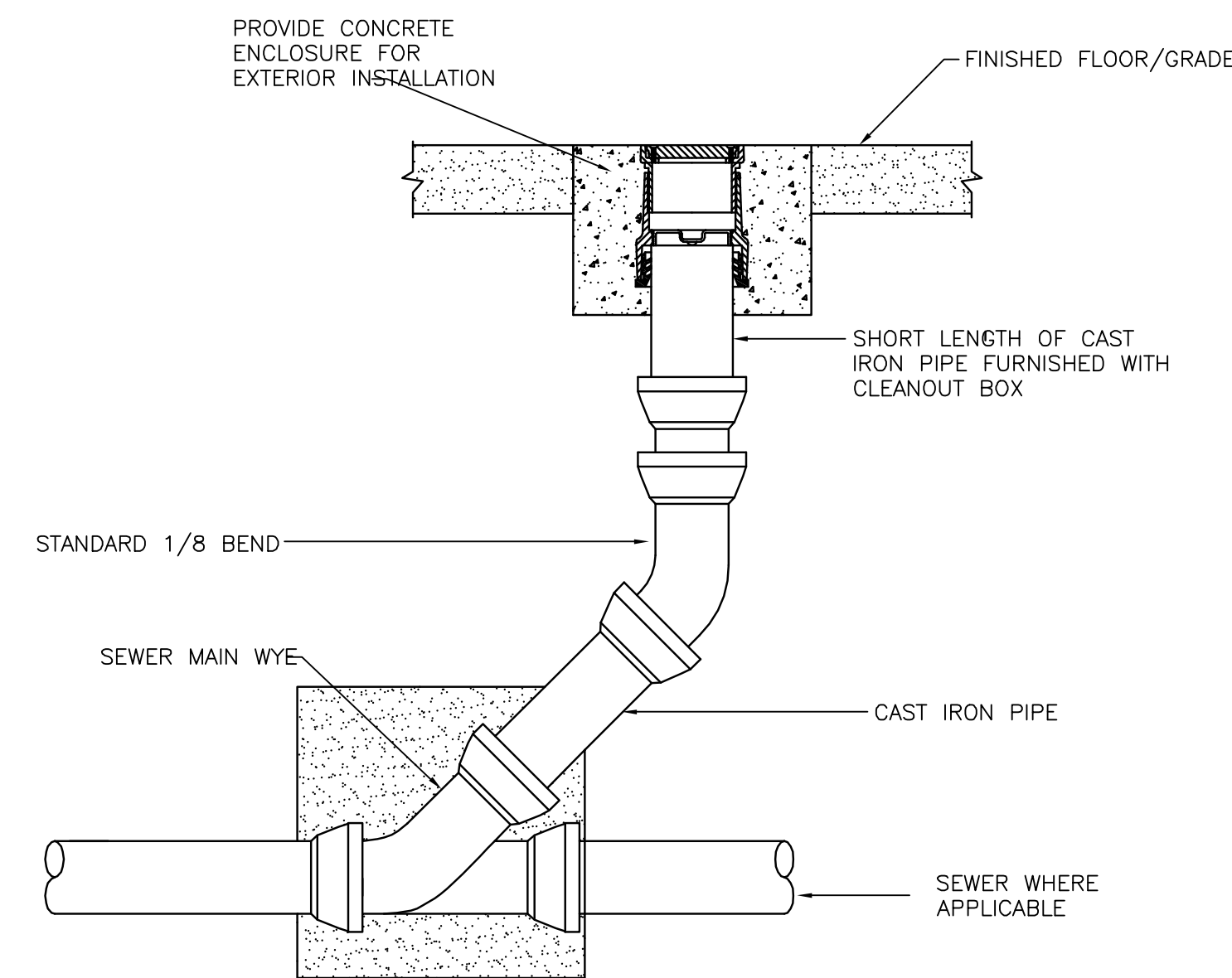
three inches = one foot
one and one half inches = one foot
one inch = one foot
three quarters inch = one foot
one half inch = one foot
three eighths inch = one foot
one quarter inch = one foot
one eighth inch = one foot



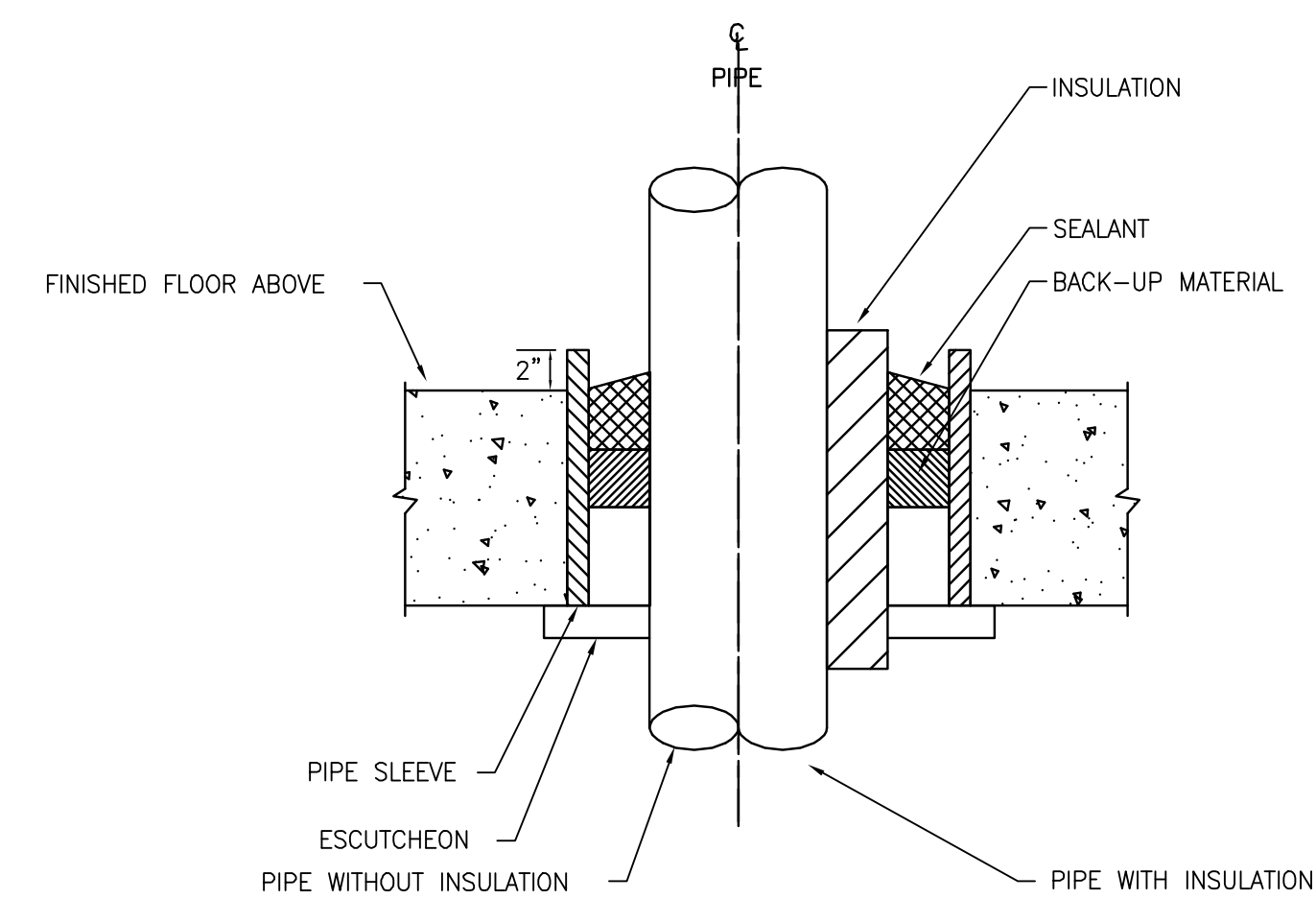
1 TYPE 'C' FLOOR DRAIN DETAIL
NTS



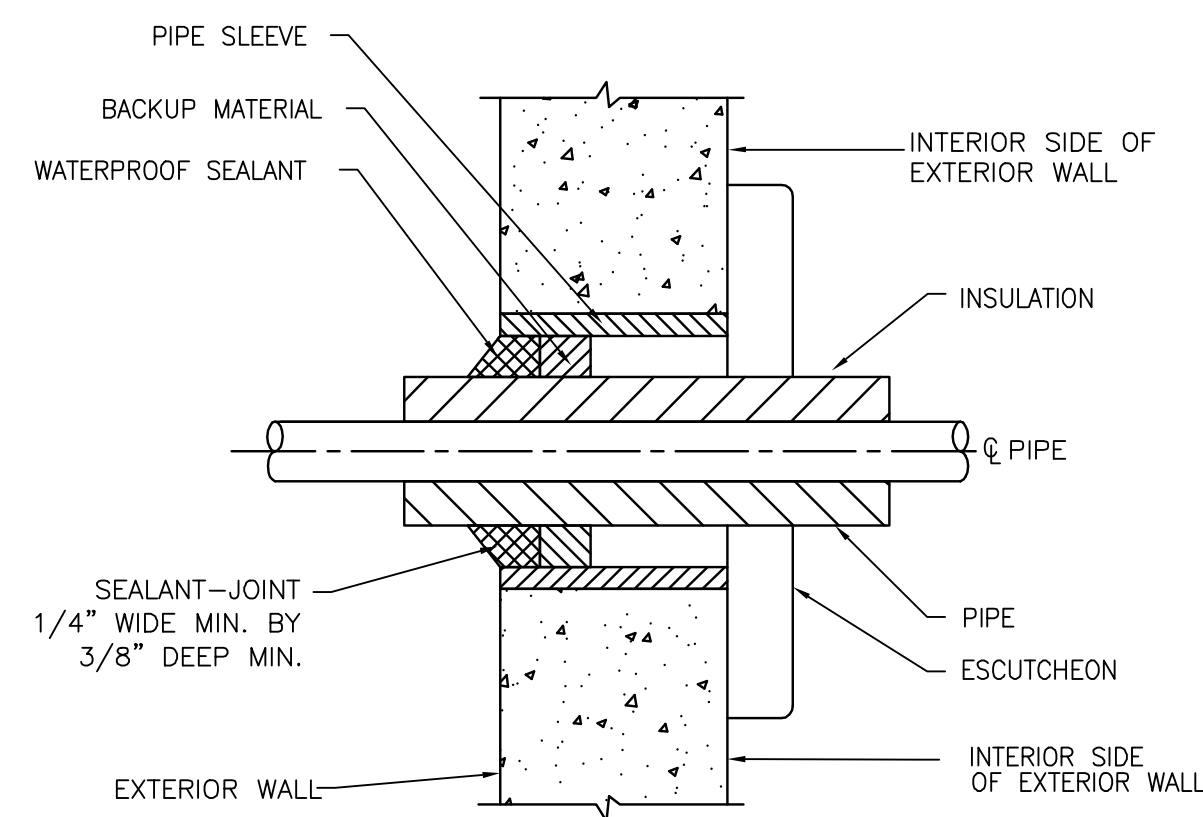
2 P-505 CLINIC SERVICE SINK ROUGH-IN DETAIL
NTS



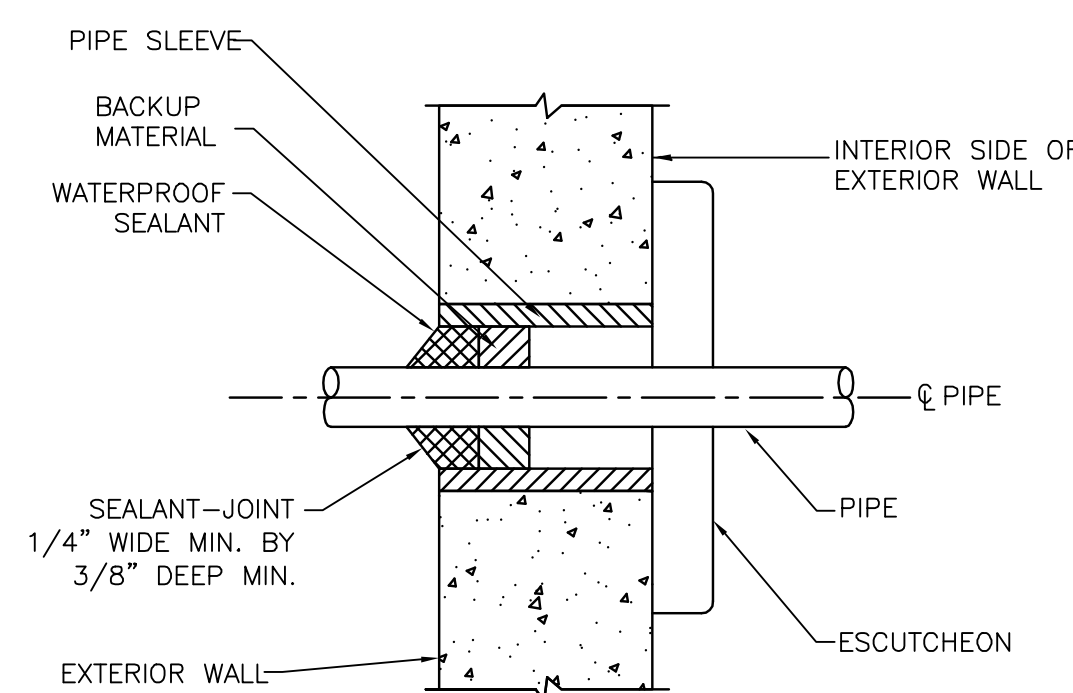
3 FLOOR CLEANOUT DETAIL
NTS



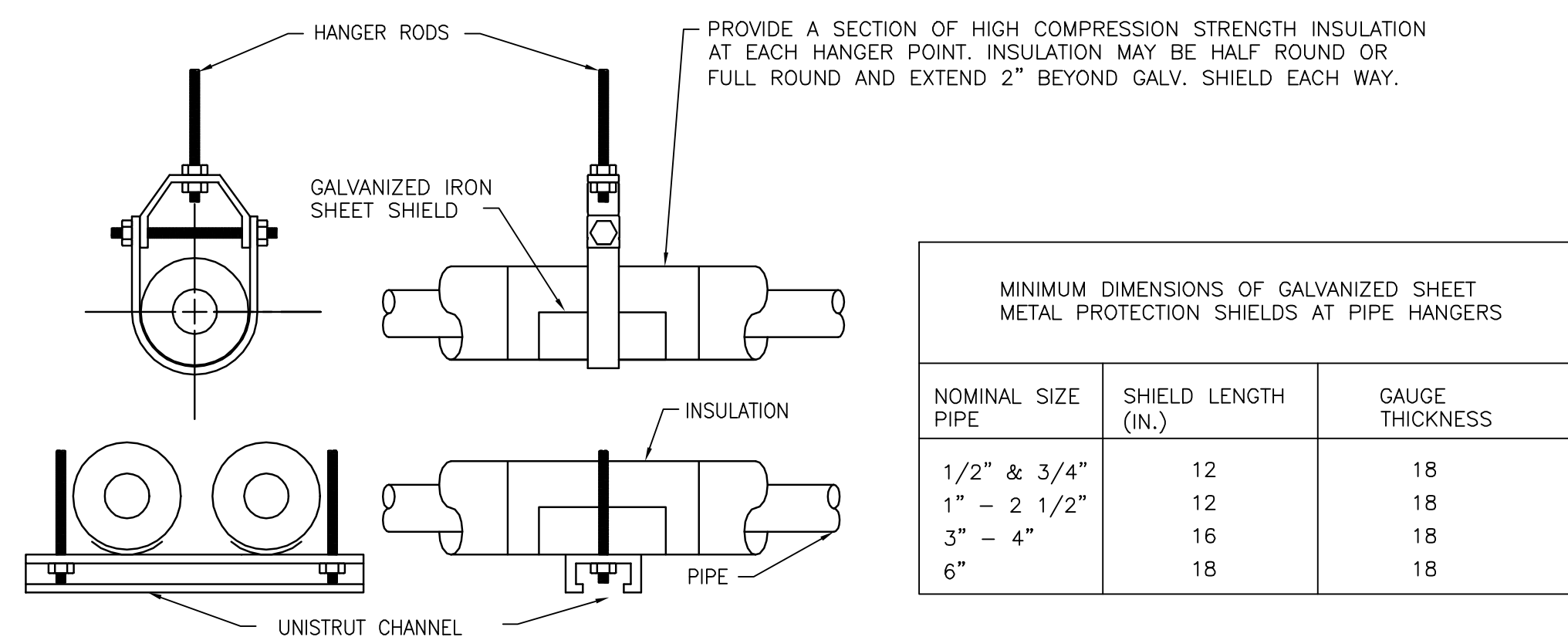
4 FLOOR PENETRATION DETAIL
NTS



5 WALL PENETRATION DETAIL FOR INSULATED PIPE
NTS



6 WALL PENETRATION DETAIL FOR BARE PIPE
NTS



7 PIPE HANGER DETAIL
NTS

MINIMUM DIMENSIONS OF GALVANIZED SHEET METAL PROTECTION SHIELDS AT PIPE HANGERS		
NOMINAL SIZE PIPE	SHIELD LENGTH (IN.)	GAUGE THICKNESS
1/2" & 3/4"	12	18
1" - 2 1/2"	12	18
3" - 4"	16	18
6"	18	18

Revisions

Date

CONSULTANTS:

The Estopinal Group
ARCHITECTS • ENGINEERS • INTERIORS
820 Jordan Street, Suite 507 tel. 318.424.3700
Shreveport, LA 71101 fax 318.424.3764

PROJECT MANAGERS AND ENGINEERS:

TNF

A VETERAN OWNED COMPANY

3 EXECUTIVE COURT, UNIT 4
SOUTH BARRINGTON, IL 60010

Drawing Title
PLUMBING DETAILS

Approved Project Director

Project Title
RENOVATE ED + PRIMARY CARE

Location
SHREVEPORT VAMC
510 EAST STONER AVE

Date
01/09/13

Checked
RM

Drawn
SL

Project Number
667-10-100

Building Number
1N, 1E

Drawing Number
P4.1
Dwg. 84 of 112

Office of Construction and Facilities Management

Department of Veterans Affairs

VA FORM 08-6231

Scale: AS NOTED