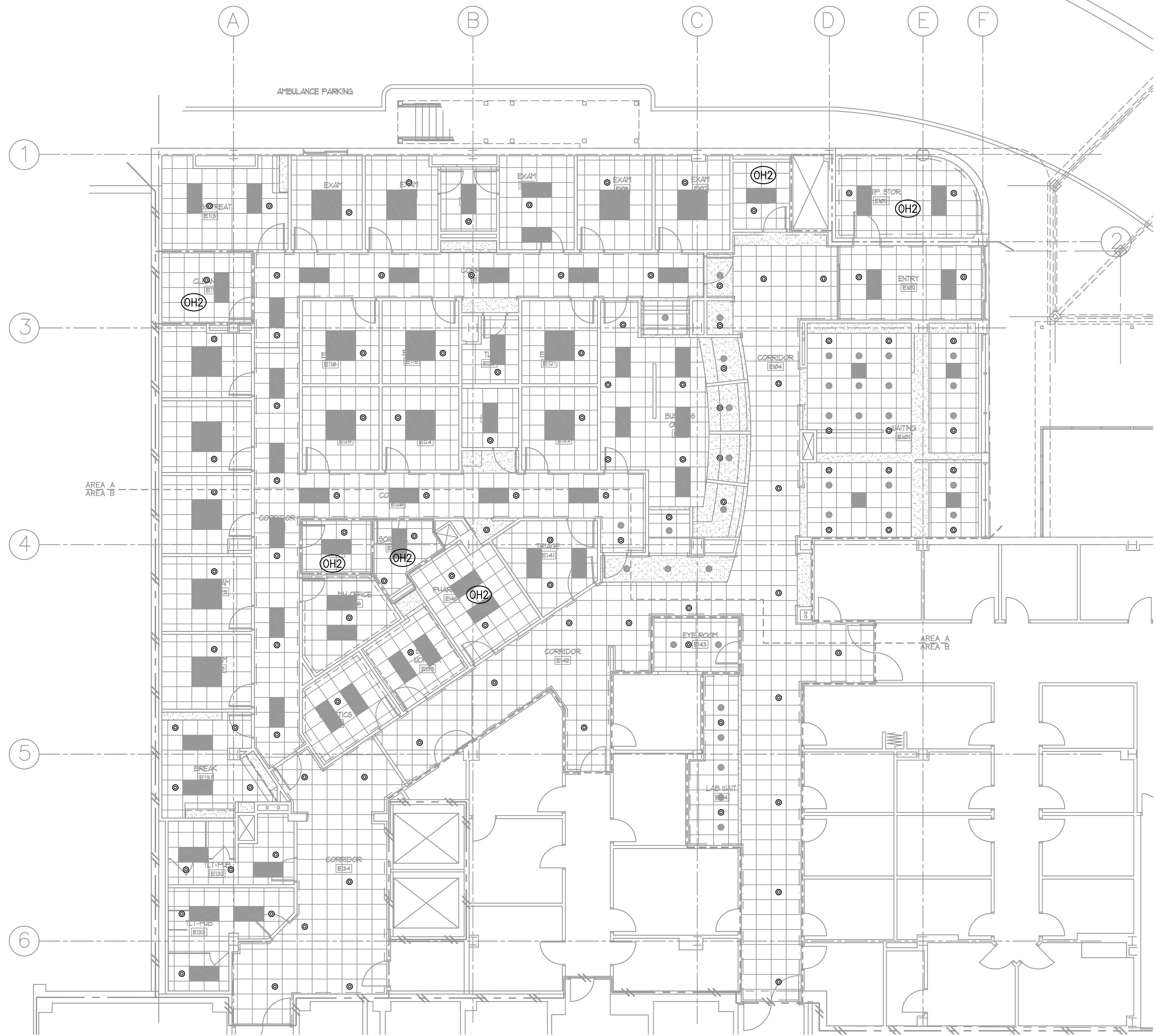


three inches = one foot
one and one half inches = one foot
one inch = one foot
three quarters inch = one foot
one half inch = one foot
three eighths inch = one foot
one quarter inch = one foot
one eighth inch = one foot
C:\Users\Sunger\Documents\Projects\Shreveport\VA\75% Dwg\VA-WASH-013-FP1.E1.dwg 1-09-13 12:23:26 PM sunger

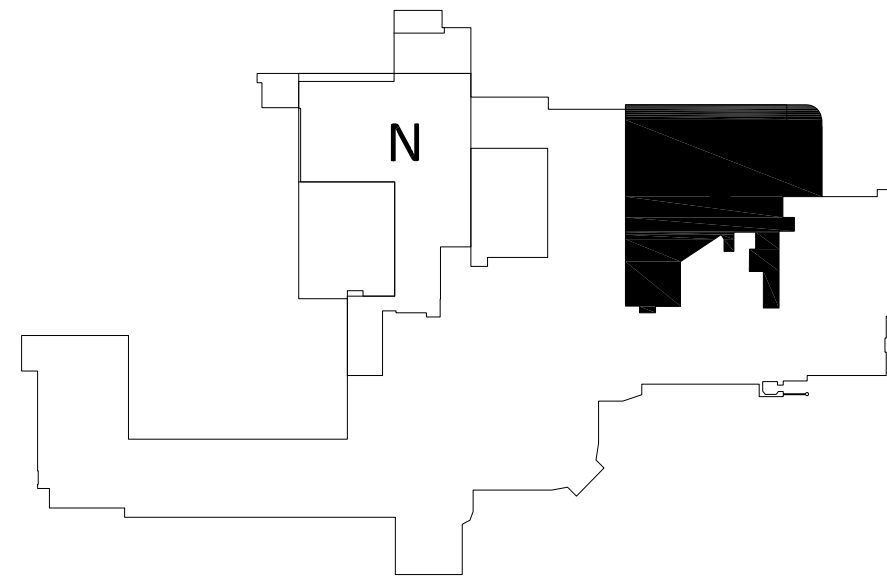


01 FIRST FLOOR - EAST
FIRE PROTECTION NEW PLAN
SCALE: 1/8"=1'-0"
0 4' 8' 16'
1/8"=1'-0"



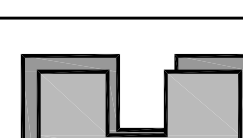


SHEET NOTES:

1. SEE SHEET FP0.1 FOR SYMBOL LEGEND AND NOTES.
2. INSTALL ORDINARY TEMPERATURE RATED SPRINKLERS A MINIMUM OF 30 INCHES FROM THE EDGE OF SUPPLY AIR DIFFUSERS.
3. INSTALL CEILING MOUNTED SPRINKLERS IN THE CENTER OF SUSPENDED CEILING TILES.
4. DRAWINGS SHOW PROPOSED SPRINKLER LOCATIONS ONLY. COORDINATE ACTUAL LAYOUT WITH OTHER BUILDING UTILITIES AND SYSTEMS.
5. CONTRACTOR SHALL RE-USE THE EXISTING SPRINKLER PIPING TO THE MAXIMUM EXTENT POSSIBLE. ALL NEW SPRINKLER PIPING INSTALLATION SHALL BE IN ACCORDANCE WITH APPLICABLE CODES.

KEYPLAN: FIRST FLOOR



FULLY SPRINKLERED

		CONSULTANTS:				PROJECT MANAGERS AND ENGINEERS:		Drawing Title		Project Title		Project Number		<div>Office of Construction and Facilities Management</div> <div> Department of Veterans Affairs</div>			
		<div> The Estopinal Group <small>ARCHITECTURE ENGINEERING INTERIORS</small></div> <div>820 Jordan Street, Suite 507 Shreveport, LA 71101 tel. 318.424.3700 fax 318.424.3764</div>		<div> HUGHES ASSOCIATES, INC. FIRE PROTECTION ENGINEERS CODE CONSULTANTS</div> <div>2121 W. Spring Creek Parkway, Suite 108 Plano, Texas 75023 Phone 972-491-1900</div>		<div> STEVEN E. UNGER PROFESSIONAL ENGINEER 01/09/2013</div>		<div> A VETERAN OWNED COMPANY</div> <div>3 EXECUTIVE COURT, UNIT 4 SOUTH BARRINGTON, IL 60010</div>		<div>FIRST FLOOR - EAST FIRE PROTECTION NEW PLAN</div>		<div>RENOVATE ED + PRIMARY CARE</div>				<div>667-10-100</div>	
								<div>Approved Project Director</div>		<div>Location SHREVEPORT VAMC 510 EAST STONER AVE</div>		<div>Building Number 1N, 1E</div>					
<div>Revisions</div>		<div>Date</div>								<div>Date 01/09/13</div>		<div>Checked SU</div>		<div>Drawn MP</div>		<div>Drawing Number FP1.E1</div> <div>Dwg. 89 of 112</div>	