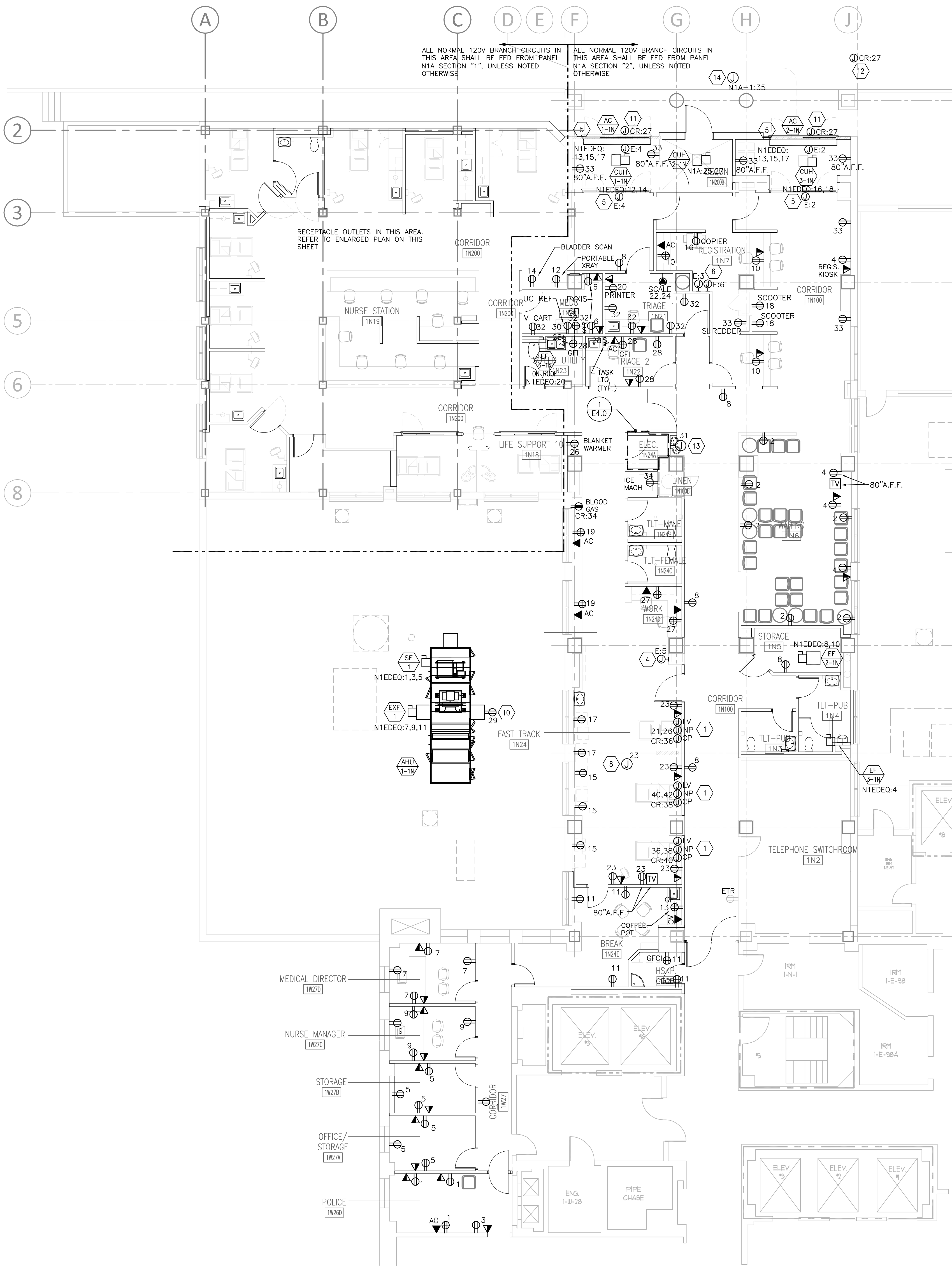


three inches = one foot  
one and one half inches = one foot  
one inch = one foot  
three quarters inch = one foot  
one half inch = one foot  
three eighths inch = one foot  
one quarter inch = one foot  
one eighth inch = one foot



FIRST FLOOR PLAN - NORTH

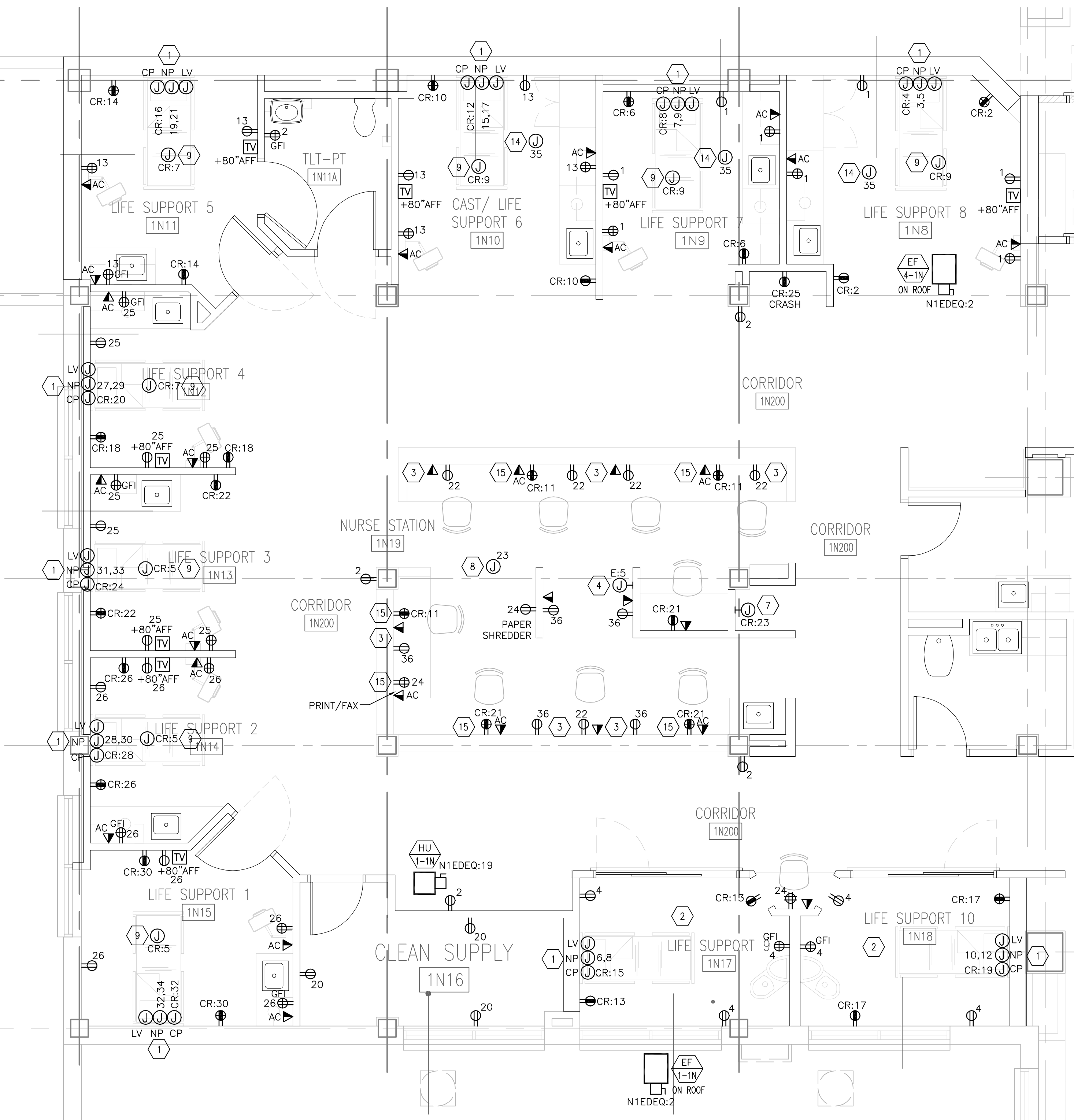
SCALE: 1/8"=1'-0"

#### GENERAL NOTES

- ALL 'CRITICAL BRANCH' RECEPTACLES AND JUNCTION BOXES CALLED OUT WITH A 'CR' CIRCUIT SHALL BE CIRCUITED TO NEW PANEL 'N1A' UNLESS NOTED OTHERWISE.
- ALL 'LIFE SAFETY BRANCH' RECEPTACLES AND JUNCTION BOXES CALLED OUT WITH A 'L' CIRCUIT SHALL BE CIRCUITED TO NEW PANEL 'N1E' UNLESS NOTED OTHERWISE.
- ALL 'NORMAL BRANCH' RECEPTACLES AND JUNCTION BOXES SHALL BE CIRCUITED TO NEW PANEL 'N1A' UNLESS NOTED OTHERWISE.
- REFER TO MECHANICAL EQUIPMENT SCHEDULE ON SHEET E2.2 FOR MORE INFORMATION REGARDING EQUIPMENT AND MOTOR CONNECTIONS.
- COORDINATE ALL RECEPTACLES SHOWN WITH ARCHITECTURAL MILLWORK (CABINETS, ETC) DRAWINGS.
- FOR DUPLEX AND TV OUTLETS IN EXAM ROOMS, COORDINATE EXACT LOCATION AND MOUNTING HEIGHTS WITH ARCHITECTURAL DRAWINGS.

#### KEY NOTES

- PROVIDE (1) 3/4" CONDUIT FOR NORMAL POWER (NP) AND (1) 3/4" CONDUIT FOR CRITICAL POWER (CP) TO HEADWALL. PROVIDE (1) 1-1/4" CONDUIT FROM HEADWALL CONNECTION POINT TO A JUNCTION BOX ABOVE ACCESSIBLE CEILING FOR LOW VOLTAGE (LV) TO THE HEADWALL. PROVIDE ANY OTHER CONDUIT REQUIRED BY THE HEADWALL MANUFACTURER IN THEIR SHOP DRAWINGS. JUNCTION BOXES TO BE 4-11/16" SQUARE. MOUNT JUNCTION BOXES AT LOCATION AS SHOWN ON HEADWALL SHOP DRAWINGS. REFER TO ARCHITECTURAL DETAIL ON SHEET A11.2N FOR MORE INFORMATION ON HEADWALL LAYOUTS.
- ALL RECEPTACLES LOCATED WITHIN THIS ROOM INCLUDING THE HEADWALL RECEPTACLES SHALL BE TAMPER RESISTANT UNLESS NOTED OTHERWISE.
- ELECTRICAL DEVICES SHALL BE MOUNTED UNDER COUNTER MILLWORK. COORDINATE WITH ARCHITECTURAL MILLWORK DETAILS.
- PROVIDE 120V LIFE SAFETY POWER TO NEW JUNCTION BOX FOR NEW MED GAS AREA ALARM PANEL. CIRCUIT AS SHOWN.
- PROVIDE 120V LIFE SAFETY POWER TO NEW JUNCTION BOX FOR SLIDING AUTODOORS. COORDINATE WITH DOOR INSTALLER PRIOR TO ROUGH-IN. CIRCUIT AS SHOWN.
- PROVIDE 120V LIFE SAFETY POWER TO NEW JUNCTION BOXES FOR NEW FIRE ALARM PANEL AND NURSE CALL CODE BLUE PANEL.

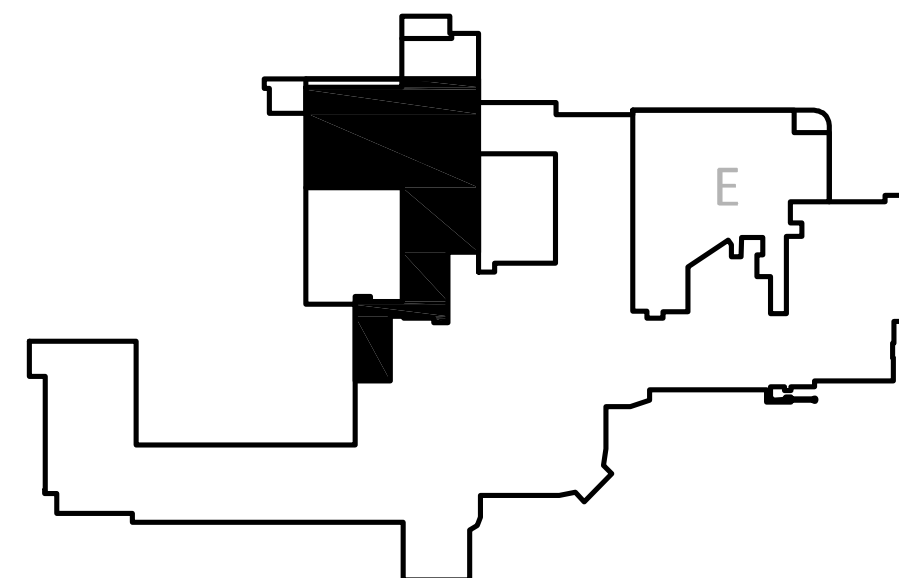


FIRST FLOOR PARTIAL PLAN - NORTH

SCALE: 1/4"=1'-0"

- PROVIDE 120V POWER FOR PNEUMATIC TUBE STATION CONNECTION. COORDINATE EXACT LOCATION AND ELECTRICAL REQUIREMENTS WITH VENDOR INSTALLATION DRAWINGS. PROVIDE A HORSEPOWER RATED SWITCH FOR EQUIPMENT DISCONNECT.
- PROVIDE 120V POWER AND DATA TO NEW JUNCTION BOX ABOVE CEILING FOR FUTURE VA INSTALLATION OF A WIRELESS HUB. COORDINATE EXACT LOCATION WITH HOSPITAL ENGINEER.
- PROVIDE 120V 'CRITICAL BRANCH' CONNECTION ABOVE ACCESSIBLE CEILING FOR OVERHEAD EXAM LIGHT. LIGHT SWITCH TO CONTROL EXAM LIGHT IS AT HEADWALL. CIRCUIT AS SHOWN.
- PROVIDE DEDICATED CIRCUIT TO OUTDOOR AIR HANDLING UNIT FOR CONTROLS, FILTERS, LIGHTS AND RECEPTACLES. PROVIDE WEATHER PROOF RECEPTACLE AT OUTDOOR AIR HANDLING UNIT.
- PROVIDE 'CRITICAL BRANCH' POWER TO JUNCTION BOX LOCATED ABOVE AUTODOORS FOR CONNECTION TO EMERGENCY/AMBULANCE OUTDOOR SIGNAGE. COORDINATE EXACT LOCATION OF SIGNAGE WITH ARCHITECTURAL DRAWINGS.
- PROVIDE 'CRITICAL BRANCH' POWER TO JUNCTION BOX ABOVE DRIVEWAY FOR EMERGENCY SIGNAGE. COORDINATE EXACT LOCATION OF SIGNAGE WITH ARCHITECTURAL DRAWINGS.
- PROVIDE NEW WALL MOUNTED JUNCTION BOX FOR NEW ELECTRIC WATER COOLER.
- PROVIDE 120V CONNECTION ABOVE ACCESSIBLE CEILING FOR PATIENT LIFT. PATIENT LIFT COMES WITH INTEGRAL TRANSFORMER. COORDINATE EXACT LOCATION OF PATIENT LIFT WITH HOSPITAL ENGINEER PRIOR TO ROUGH-IN.
- ELECTRICAL DEVICES SHALL BE MOUNTED ABOVE COUNTER MILLWORK. COORDINATE WITH ARCHITECTURAL MILLWORK DETAILS.

#### KEYPLAN: FIRST FLOOR



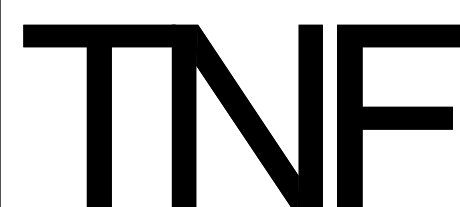
Scale: AS NOTED

#### CONSULTANTS:



The Estopinal Group  
PROFESSIONAL ENGINEERING ARCHITECTURE  
820 Jordan Street, Suite 507 tel. 318.424.3700  
Shreveport, LA 71101 fax 318.424.3764

#### PROJECT MANAGERS AND ENGINEERS:



3 EXECUTIVE COURT, UNIT 4  
SOUTH BARRINGTON, IL 60010

#### Drawing Title

FIRST FLOOR - NORTH  
ELECTRICAL POWER PLAN

#### Approved Project Director

#### Project Title

RENOVATE ED + PRIMARY CARE

#### Location

SHREVEPORT VAMC  
510 EAST STONER AVE

#### Date

01/09/13

#### Checked

RM

#### Drawn

TJH

#### Project Number

667-10-100

#### Building Number

1N, 1E

#### Drawing Number

E1N2

Dwg. 94 of 112

Office of  
Construction  
and Facilities  
Management

Department of  
Veterans Affairs