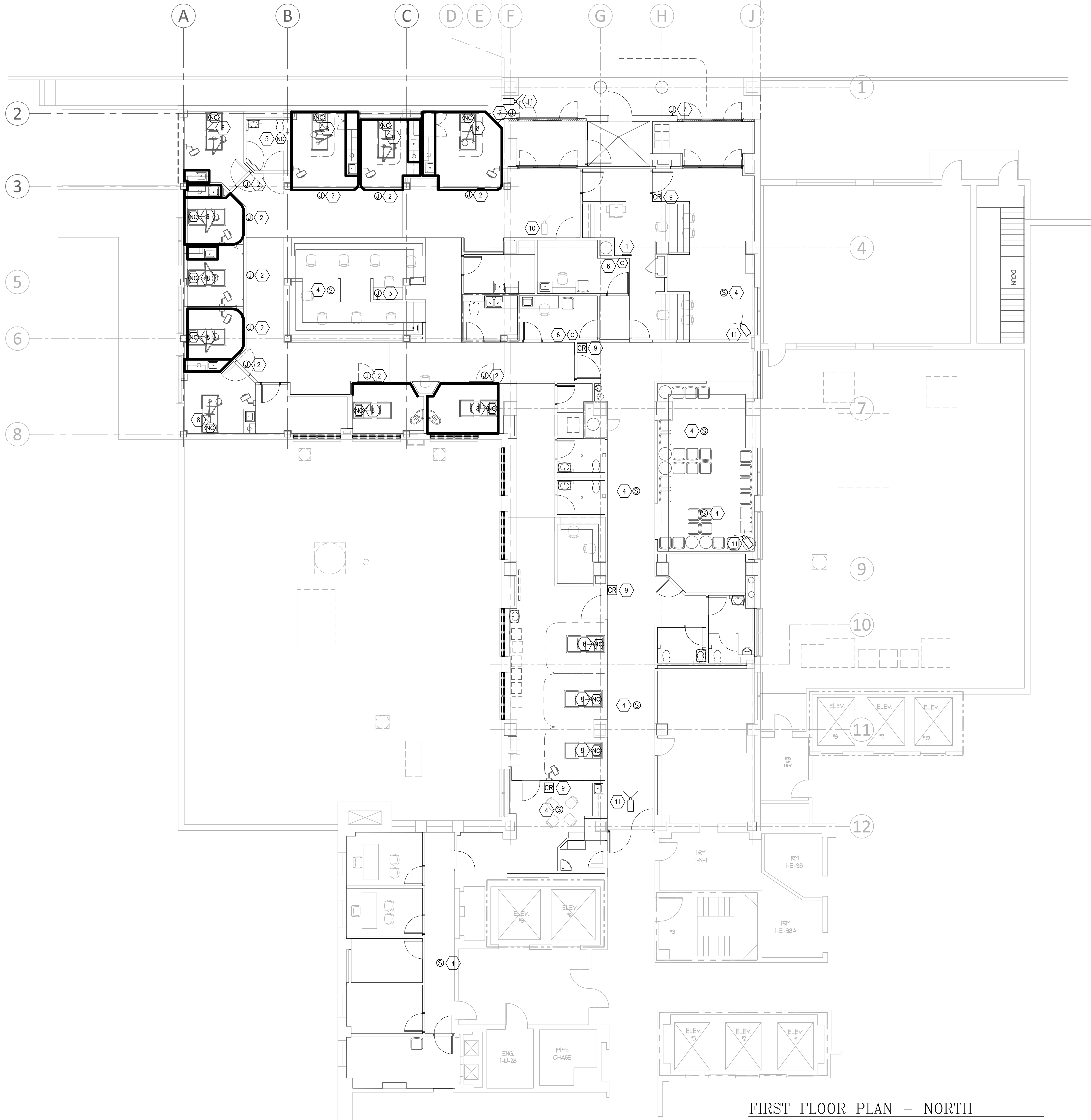


three inches = one foot
one and one half inches = one foot
one inch = one foot
three quarters inch = one foot
one half inch = one foot
three eighths inch = one foot
one quarter inch = one foot
one eighth inch = one foot



FIRST FLOOR PLAN - NORTH
SCALE: 1/8"=1'-0"

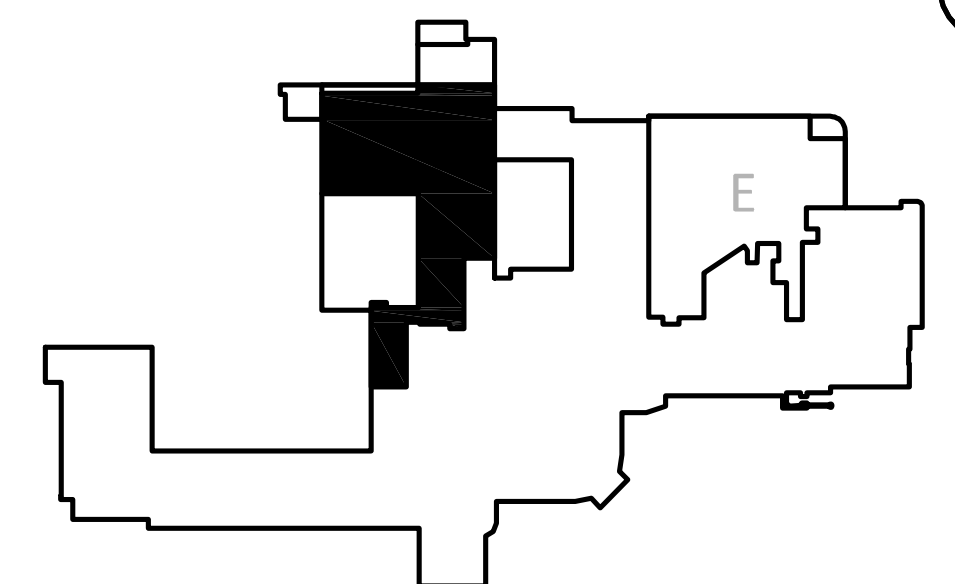
GENERAL NOTES

- CONTRACTOR TO INSTALL NURSE CALL SYSTEM AND MAKE OPERATIONAL. TIE NEW DEVICES INTO EXISTING HOSPITAL SYSTEM. MATCH NEW DEVICES WITH EXISTING DEVICES.

KEY NOTES

- LOCATION OF NEW NURSE CALL CONTROL CABINET. CONTRACTOR TO TIE NEW PANEL INTO MAIN SYSTEM AT HOSPITAL.
- PROVIDE JUNCTION BOX FOR NEW NURSE CALL CORRIDOR LIGHT ABOVE DOOR TO LIFE SUPPORT ROOM. MOUNT AT 4" ABOVE DOOR FRAME FOR WALL MOUNTED APPLICATIONS. CEILING MOUNT MAY BE REQUIRED. CONNECT TO NEW NURSE CALL CONTROL CABINET.
- PROVIDE JUNCTION BOX FOR NEW NURSE CALL MONITORING STATION FOR NEW EMERGENCY DEPARTMENT. VERIFY ELECTRICAL CONNECTION WITH NURSE CALL VENDOR.
- PROVIDE NEW SPEAKER IN LOCATION SHOWN.
- PROVIDE NEW EMERGENCY CALL STATION AT TOILET IN NEW RESTROOM. MOUNT AT 48" AFF.
- PROVIDE NEW CODE BLUE STATION IN TRIAGE. MOUNT AT 48" AFF.
- PROVIDE PROVISIONS FOR ACCESS TO DOORS VIA PUSHBUTTON.
- PROVIDE NURSE CALL PATIENT STATION AND CODE BLUE STATION IN EXAM HEADWALL UNIT.
- PROVIDE NEW CARD READER FOR ACCESS INTO THE PATIENT AREA. COORDINATE LOCATION WITH HOSPITAL ENGINEER. REFER TO SHEET EA-1 FOR LOCATION OF HIRSCH SYSTEM CARD READER CONTROL PANEL.
- EXISTING SECURITY CAMERA TO BE RELOCATED TO THIS LOCATION.
- CONTRACTOR TO PROVIDE NEW SECURITY CAMERAS. MATCH EXISTING. EXISTING CAMERAS ARE PELCO SARIX FIXED VANDAL MINI DOME, 1M18-V, INDOOR, 1.3 MEGAPIXEL HD DIGITAL CAMERA. TIE NEW CAMERAS INTO EXISTING HOSPITAL CAMERA SYSTEM LOCATED IN 1W5B.

KEYPLAN: FIRST FLOOR



95% CONSTRUCTION DOCUMENTS - NOT FOR CONSTRUCTION
FULLY SPRINKLERED

Scale: AS NOTED

Revisions		Date		CONSULTANTS:		PROJECT MANAGERS AND ENGINEERS:		Drawing Title		Project Title		Project Number		Office of Construction and Facilities Management	
								FIRST FLOOR - NORTH SECURITY/NURSE CALL PLAN		RENOVATE ED + PRIMARY CARE		667-10-100		Department of Veterans Affairs	
								Approved Project Director		Location		Building Number			
										SHREVEPORT VAMC 510 EAST STONER AVE		1N, 1E			
										Date		Checked		Drawn	
										01/09/13		RM		TJH	
												Drawing Number			
												E1.N3			
												Dwg. 95 of 112			