

GENERAL NOTES

- ALL 'LIFE SAFETY BRANCH' 120V LIGHTING FIXTURES SHALL BE CIRCUITED TO PANEL 'N1GELS' UNLESS NOTED OTHERWISE.
- ALL EXIT SIGNS SHALL BE CIRCUITED TO NEAREST 'LIFE SAFETY BRANCH' CIRCUIT AND SHALL BE CIRCUITED AHEAD OF ANY SWITCHING.
- ALL 'NORMAL BRANCH' 120V LIGHTING FIXTURES SHALL BE CIRCUITED TO PANEL 'N1H' UNLESS NOTED OTHERWISE.
- ALL 'CRITICAL BRANCH' 120V LIGHTING FIXTURES SHALL BE CIRCUITED TO PANEL 'N1HEC' UNLESS NOTED OTHERWISE.
- 'DLS' STANDS FOR DUAL LEVEL SWITCHING. PROVIDE BALLASTS PER FIXTURE FOR DESIRED SWITCHING CONFIGURATION. THE INNER LAMPS WILL BE ON THE FIRST SWITCH AND THE OUTER LAMPS ON THE SECOND SWITCH PER FIXTURE.
- AREAS WITH NO WORK SHOWN ARE EXISTING TO REMAIN.

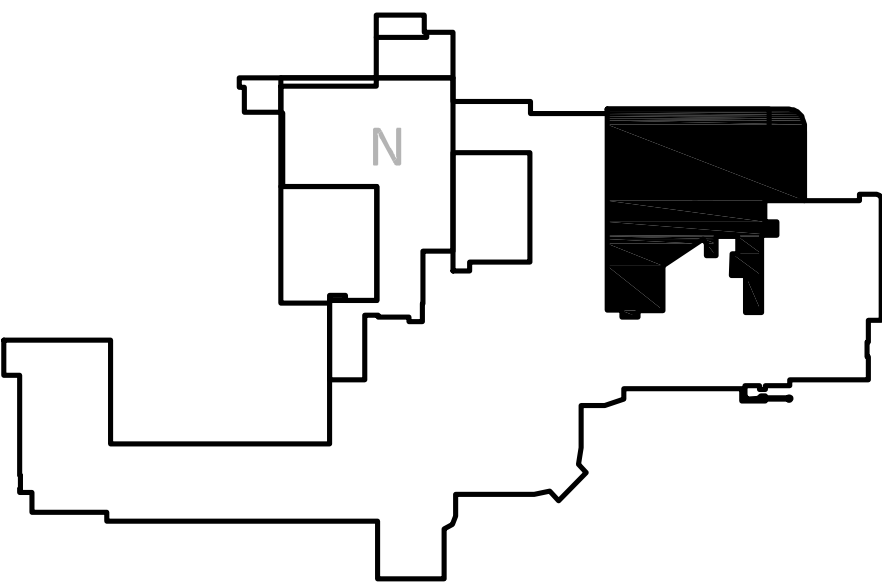
KEY NOTES

- ALL UNDERCABINET LIGHTING TO BE CONNECTED TO NEAREST 120V RECEPTACLE CIRCUIT. CONTROL VIA ROCKER SWITCH AT FIXTURE.

SYMBOLS

- 2X4 LIGHT FIXTURE - NORMAL POWER
- 2X4 LIGHT FIXTURE - CRITICAL POWER
- 2X4 LIGHT FIXTURE - LIFE SAFETY POWER
- WALL MOUNTED VANITY LIGHT FIXTURE
- UNDERCABINET LIGHT FIXTURE
- DOWNLIGHT/CAN LIGHT FIXTURE
- SINGLE POLE SWITCH
- 3-WAY SWITCH
- DIMMER SWITCH
- WALL OCCUPANCY SENSOR SWITCH
- PANELBOARD
- EXIT SIGN W/ BATTERY BACK-UP

KEYPLAN: FIRST FLOOR



FIRST FLOOR PLAN - EAST

SCALE: 1/8"=1'-0"

CONSULTANTS:



The Estopinal Group
820 Jordan Street, Suite 507 tel. 318.424.3700
Shreveport, LA 71101 fax 318.424.3764

PROJECT MANAGERS AND ENGINEERS:



3 EXECUTIVE COURT, UNIT 4
SOUTH BARRINGTON, IL 60010

FIRST FLOOR - EAST
ELECTRICAL LIGHTING PLAN

Approved Project Director

Project Title

RENOVATE ED + PRIMARY CARE

Project Number

667-10-100

Building Number

1N, 1E

Drawing Number

E1.E1

Dwg. 96 of 112

Office of
Construction
and Facilities
Management



Scale: AS NOTED