

three inches = one foot

one and one half inches = one foot

one inch = one foot

three quarters inch = one foot

one half inch = one foot

three eighths inch = one foot

one quarter inch = one foot

one eighth inch = one foot

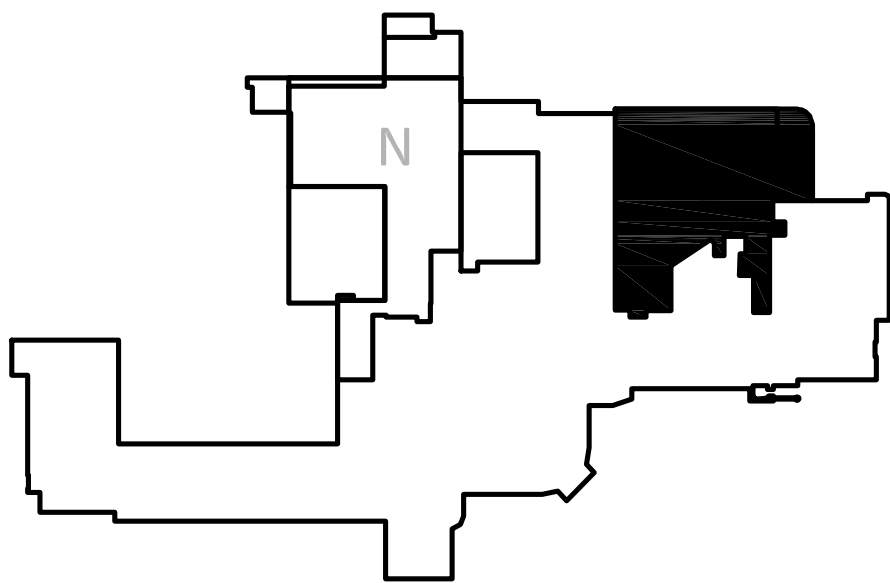
GENERAL NOTES

1. ALL "NORMAL BRANCH" RECEPTACLES AND JUNCTION BOXES SHALL BE CIRCUITED TO EXISTING PANEL 'N1H' UNLESS NOTED OTHERWISE.
2. ALL "CRITICAL BRANCH" RECEPTACLES AND JUNCTION BOXES CALLED OUT WITH A 'CR' CIRCUIT SHALL BE CIRCUITED TO NEW PANEL 'N1HEC' UNLESS NOTED OTHERWISE.
3. REFER TO MECHANICAL EQUIPMENT SCHEDULE ON SHEET E6.2 FOR MORE INFORMATION REGARDING EQUIPMENT AND MOTOR CONNECTIONS.
4. COORDINATE ALL RECEPTACLES SHOWN WITH ARCHITECTURAL MILLWORK (CABINETS, ETC) DRAWINGS.

KEY NOTES

- 1 PROVIDE NEW WALL MOUNTED JUNCTION BOX FOR NEW ELECTRIC WATER COOLER.
- 2 ELECTRICAL DEVICES SHALL BE MOUNTED UNDER COUNTER MILLWORK. COORDINATE WITH ARCHITECTURAL MILLWORK DETAILS.
- 3 PROVIDE 120V LIFE SAFETY POWER TO JUNCTION BOX FOR EXISTING RELOCATED MED GAS AREA ALARM PANEL. CIRCUIT AS SHOWN.
- 4 PROVIDE 120V POWER FOR PNEUMATIC TUBE STATION CONNECTION. COORDINATE EXACT LOCATION AND ELECTRICAL REQUIREMENTS WITH VENDOR INSTALLATION DRAWINGS. PROVIDE A HORSEPOWER RATED SWITCH FOR EQUIPMENT DISCONNECT.

KEYPLAN: FIRST FLOOR



FIRST FLOOR PLAN - EAST

SCALE: 1/8"=1'-0"

CONSULTANTS:



The Estopinal Group

820 Jordan Street, Suite 507 tel. 318.424.3700
Shreveport, LA 71101 fax 318.424.3764



PROJECT MANAGERS AND ENGINEERS:



A VETERAN OWNED COMPANY

3 EXECUTIVE COURT, UNIT 4
SOUTH BARRINGTON, IL 60010

Drawing Title

FIRST FLOOR - EAST
ELECTRICAL POWER PLAN

Approved Project Director

Project Title

RENOVATE ED + PRIMARY CARE

Project Number

667-10-100

Building Number

1N, 1E

Drawing Number

E1, E2

Dwg. 97 of 112

Office of
Construction
and Facilities
Management

