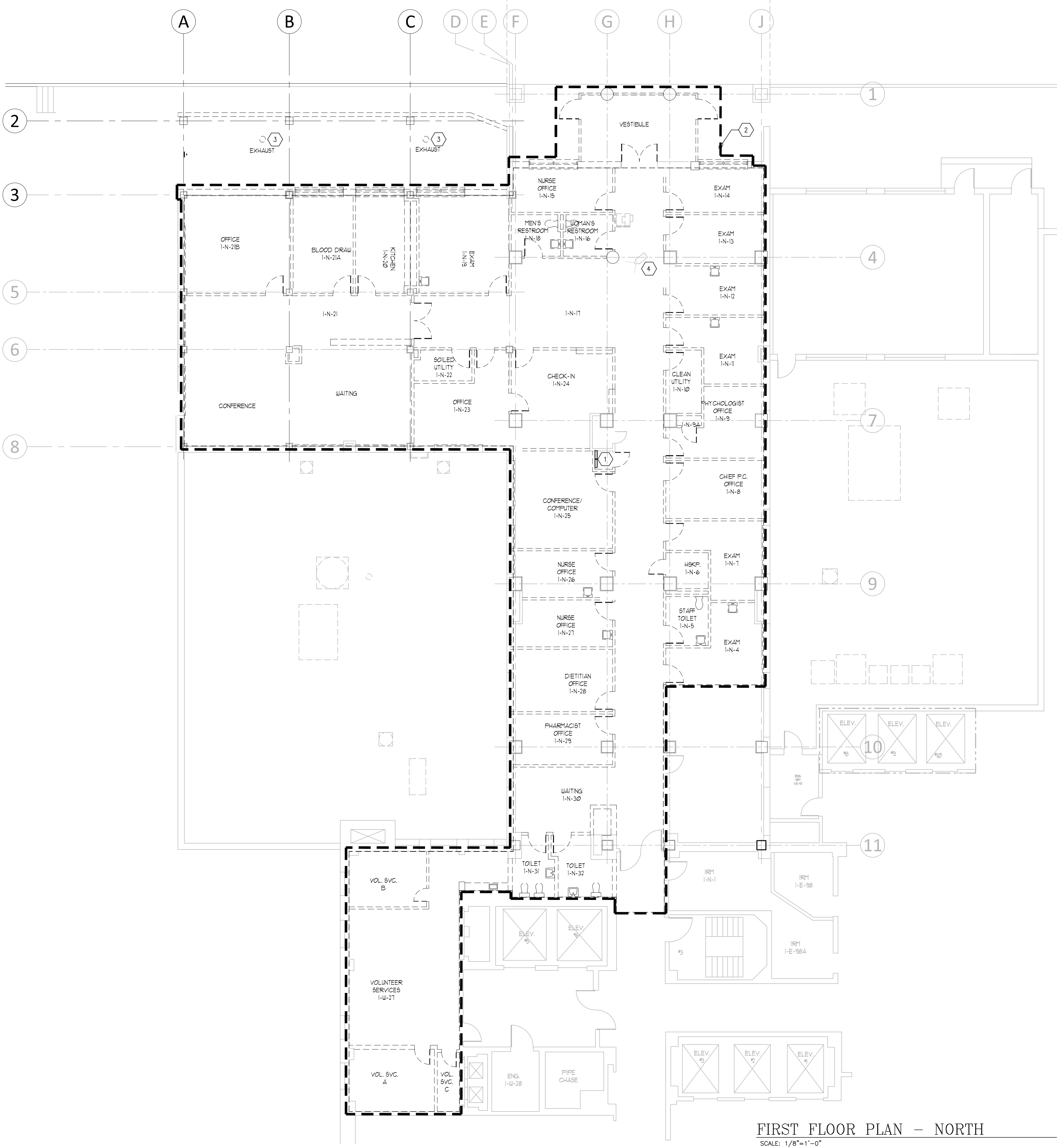


three inches = one foot  
one and one half inches = one foot  
one inch = one foot  
three quarters inch = one foot  
one half inch = one foot  
one quarter inch = one foot  
one eighth inch = one foot  
one eighth inch = one foot



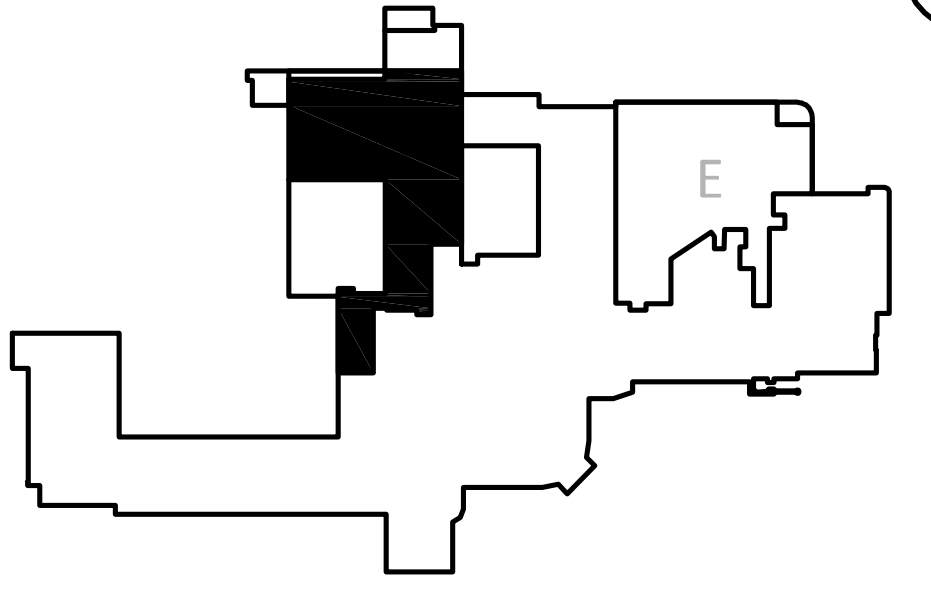
GENERAL NOTES

1. GC IS RESPONSIBLE TO FIELD VERIFY EXISTING CONDITIONS (INCLUDING BUT NOT LIMITED TO ITEMS ABOVE CEILING AND ITEMS AROUND CHASES/COLUMNS) PRIOR TO BIDDING AND NOTIFY VA RESIDENT ENGINEER OF ANY DISCREPANCIES. FAILURE TO DO SO WILL RESULT IN GC TAKING OWNERSHIP OF ALL MODIFICATIONS, RELOCATION NEEDED TO BE PERFORMED TO ACCOMMODATE THE INTENTION OF NEW WORK.

KEY NOTES

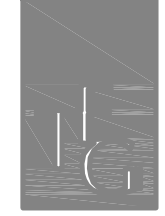


- 1 EXISTING ELECTRICAL PANELS ARE TO BE DEMOLISHED. DEMO ALL ASSOCIATED WIRING AND FEEDER BACK TO ORIGINAL SOURCE.
- 2 ALL EXISTING ELECTRICAL DEVICES INCLUDING RECEPTACLES, LIGHT FIXTURES, LIGHT SWITCHES AND VOICE/DATA OUTLETS LOCATED WITHIN DASHED AREA SHALL BE DEMOLISHED DURING DEMOLITION UNLESS NOTED OTHERWISE. CONTRACTOR SHALL DEMO DEVICE AND ASSOCIATED WIRING BACK TO EXISTING ELECTRICAL PANEL AND MARK CIRCUIT BREAKER AS SPARE.
- 3 COORDINATE THE RELOCATION OF EXISTING EXHAUST FAN WITH MECHANICAL CONTRACTOR.
- 4 EXISTING SECURITY CAMERA. CONTRACTOR SHALL REMOVE AND STORE CAMERA FOR REINSTALLATION. SEE SHEET E1-N-3 FOR NEW LOCATION.

KEYPLAN: FIRST FLOOR



FIRST FLOOR PLAN - NORTH  
SCALE: 1/8"=1'-0"

Scale: AS NOTED

<div>Revisions</div> <div>Date</div>		<div>CONSULTANTS:</div> <div><div>The Estopinal Group ARCHITECTS + ENGINEERS</div><div>820 Jordan Street, Suite 507 tel. 318.424.3700 Shreveport, LA 71101 fax 318.424.3764</div></div>		<div>PROJECT MANAGERS AND ENGINEERS:</div> <div><div>A VETERAN OWNED COMPANY</div><div>3 EXECUTIVE COURT, UNIT 4 SOUTH BARRINGTON, IL 60010</div></div>		<div>Drawing Title</div> <div>FIRST FLOOR - NORTH ELECTRICAL DEMO PLAN</div> <div>Approved Project Director</div>		<div>Project Title</div> <div>RENOVATE ED + PRIMARY CARE</div> <div>Location SHREVEPORT VAMC 510 EAST STONER AVE</div> <div>Date 01/09/13</div> <div>Checked RM</div> <div>Drawn TJH</div>		<div>Project Number</div> <div>667-10-100</div> <div>Building Number</div> <div>1N, 1E</div> <div>Drawing Number</div> <div>E2.N1</div> <div>Dwg. 99 of 112</div>		<div>Office of Construction and Facilities Management</div> <div>Department of Veterans Affairs</div>	
--------------------------------------	--	--	--	--	--	---	--	--	--	---	--	--	--