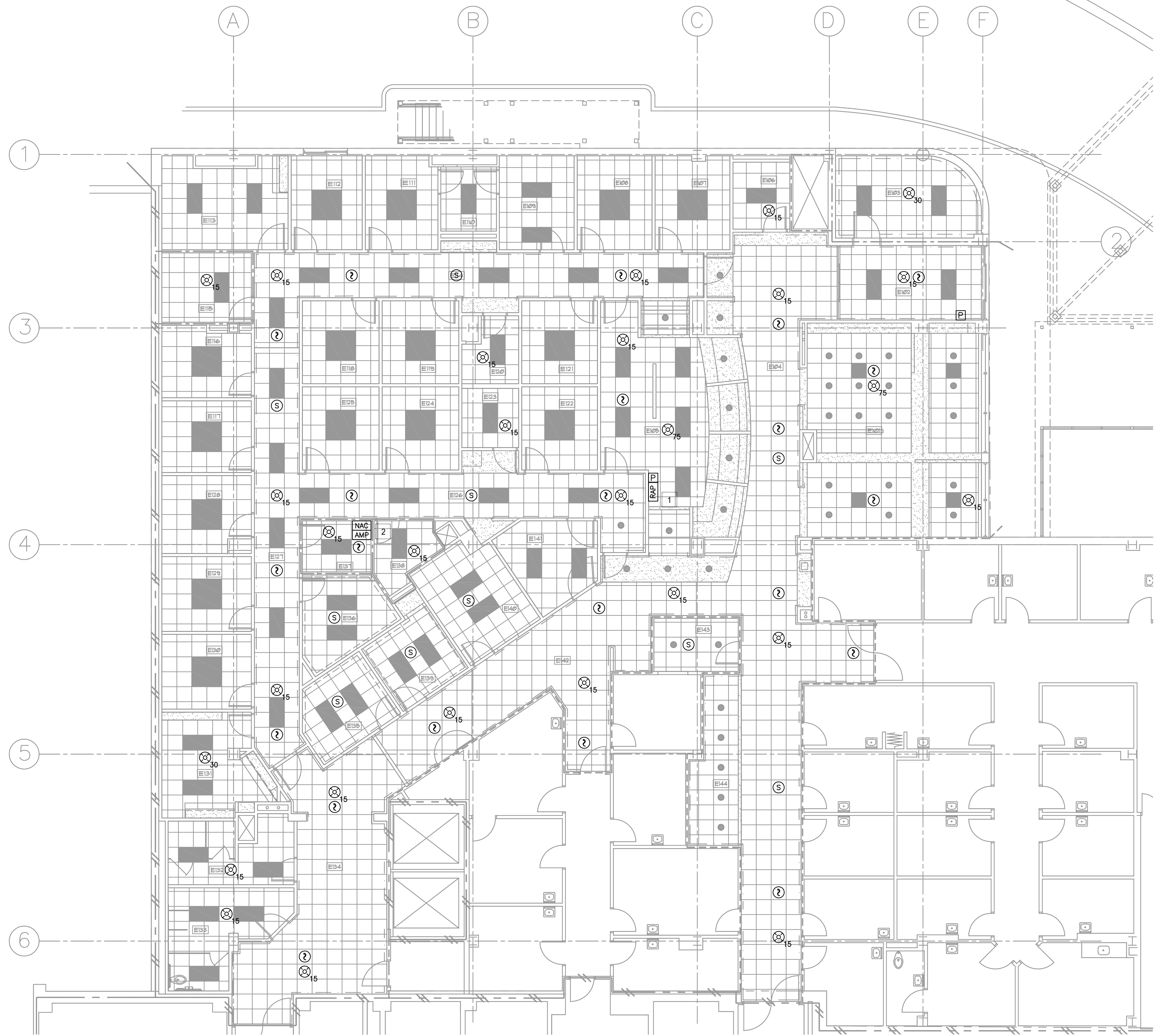


three inches = one foot
one and one half inches = one foot
one inch = one foot
three quarters inch = one foot
one half inch = one foot
three eighths inch = one foot
one quarter inch = one foot
one eighth inch = one foot
0 1 2 3 4 5 6 7 8 9 10
C:\Users\Sunger\Documents\Projects\Shreveport VA\75% Dwg\VA-WASH-015-FA1.E1.dwg 1-09-13 12:19:06 PM sunger



01 FIRST FLOOR - EAST
FIRE ALARM NEW PLAN
SCALE: 1/8"=1'-0"
0 4' 8' 16'
1/8"=1'-0"

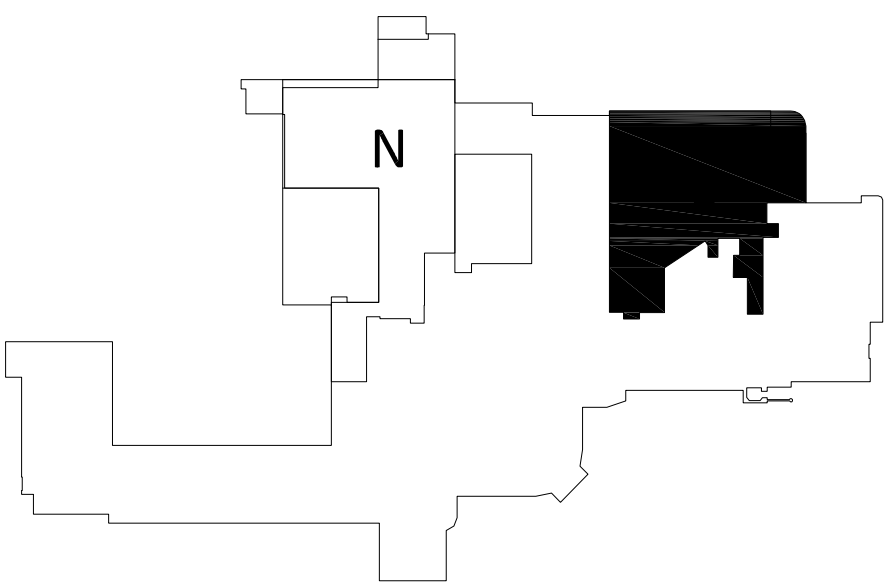
SHEET NOTES:

- SEE SHEET FA0.1 FOR SYMBOL LEGEND AND NOTES.
- INSTALL AREA SMOKE DETECTORS AND SMOKE ALARMS A MINIMUM OF 3 FEET FROM THE EDGE OF SUPPLY OR RETURN AIR DIFFUSERS.
- INSTALL CEILING MOUNTED FIRE ALARM DEVICES IN THE CENTER OF SUSPENDED CEILING TILES.
- THIS SHEET DEPICTS THE INTENT OF INSTALLATION ONLY. THIS SHEET MAY NOT SHOW ALL NECESSARY EQUIPMENT FOR A FULLY FUNCTIONAL FIRE ALARM SYSTEM. IT IS THE CONTRACTOR'S RESPONSIBILITY TO PROVIDE ALL NECESSARY EQUIPMENT / MATERIALS/ LABOR. PROGRAMMING TO PROVIDE A FULLY FUNCTIONAL SYSTEM THAT COMPLIES WITH THE APPLICABLE CODES.

KEYED NOTES:

- NEW REMOTE ANNUNCIATOR PANEL LOCATION. COORDINATE LOCATION WITH VA.
- POTENTIAL LOCATION FOR NOTIFICATION APPLIANCE CIRCUIT POWER PANEL AND DISTRIBUTED AMPLIFIER. COORDINATE LOCATION WITH VA.

KEYPLAN: FIRST FLOOR

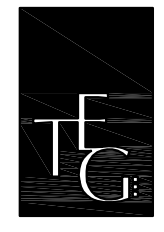


FULLY SPRINKLERED

Scale: AS NOTED

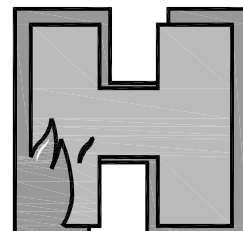
Revisions	Date

CONSULTANTS:



The Estopinal Group
CONSULTING ENGINEERS ARCHITECTS

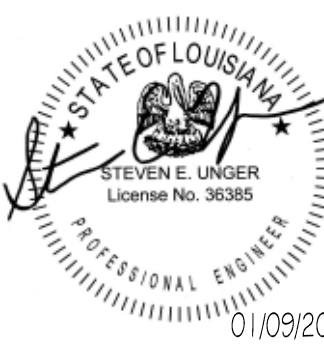
820 Jordan Street, Suite 507 tel. 318.424.3700
Shreveport, LA 71101 fax 318.424.3764



HUGHES ASSOCIATES, INC.
FIRE PROTECTION ENGINEERS
CODE CONSULTANTS

2121 W. Spring Creek Parkway, Suite 108
Plano, Texas 75023 Phone 972-491-1900

PROJECT MANAGERS AND ENGINEERS:



TNF A VETERAN OWNED COMPANY

3 EXECUTIVE COURT, UNIT 4
SOUTH BARRINGTON, IL 60010

Drawing Title
FIRST FLOOR - EAST
FIRE ALARM NEW PLAN

Approved Project Director

Project Title
RENOVATE ED + PRIMARY CARE

Location
SHREVEPORT VAMC
510 EAST STONER AVE

Date
01/09/13

Checked
SU


Drawn
MP

Project Number
667-10-100

Building Number
1N, 1E

Drawing Number
FA1.E1
Dwg. 110 of 112

**Office of
Construction
and Facilities
Management**

 **Department of
Veterans Affairs**