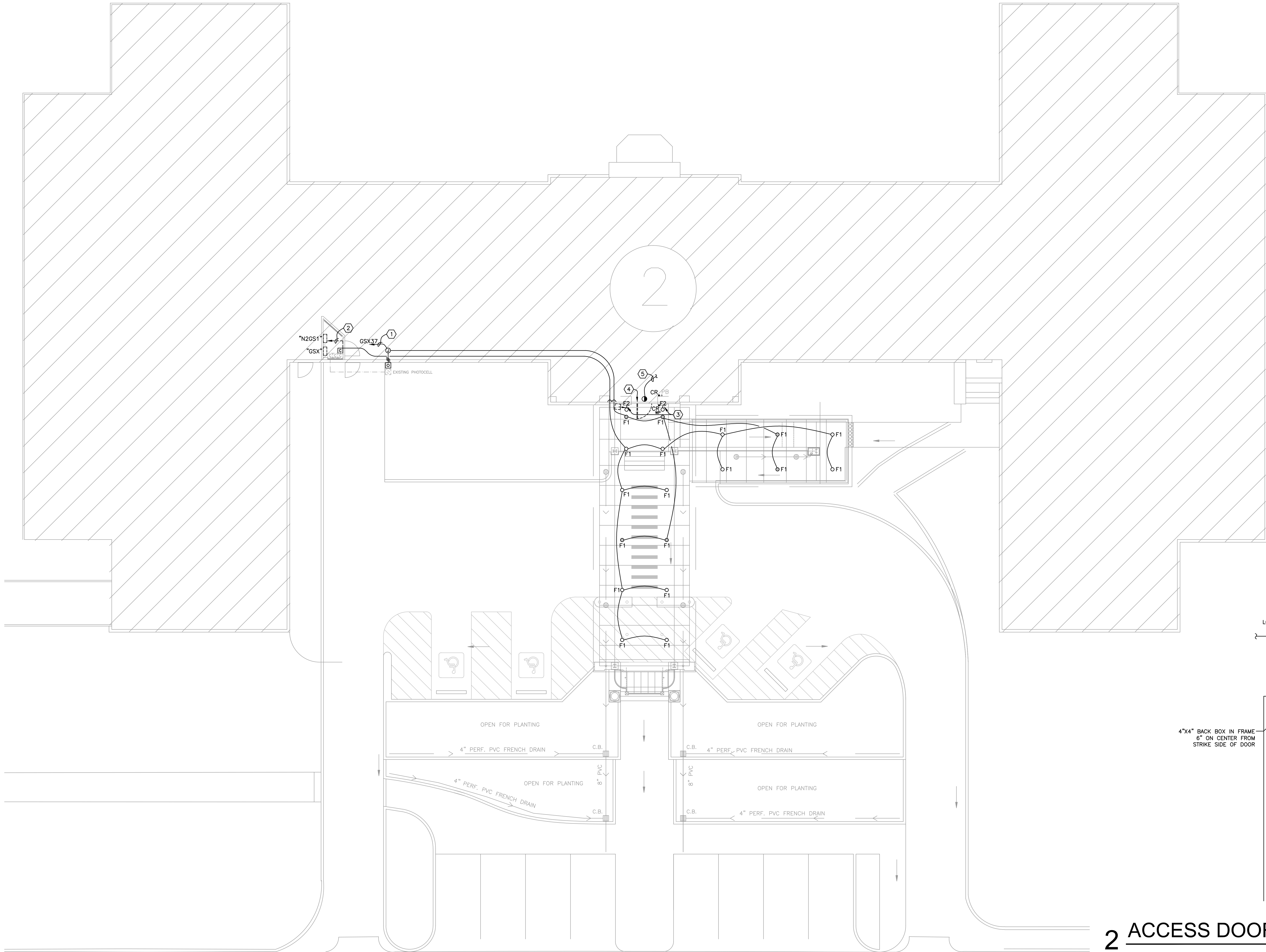


three inches = one foot  
one and one half inches = one foot  
one inch = one foot  
three quarters inch = one foot  
one half inch = one foot  
three eighths inch = one foot  
one quarter inch = one foot  
one eighth inch = one foot



SYMBOL SCHEDULE

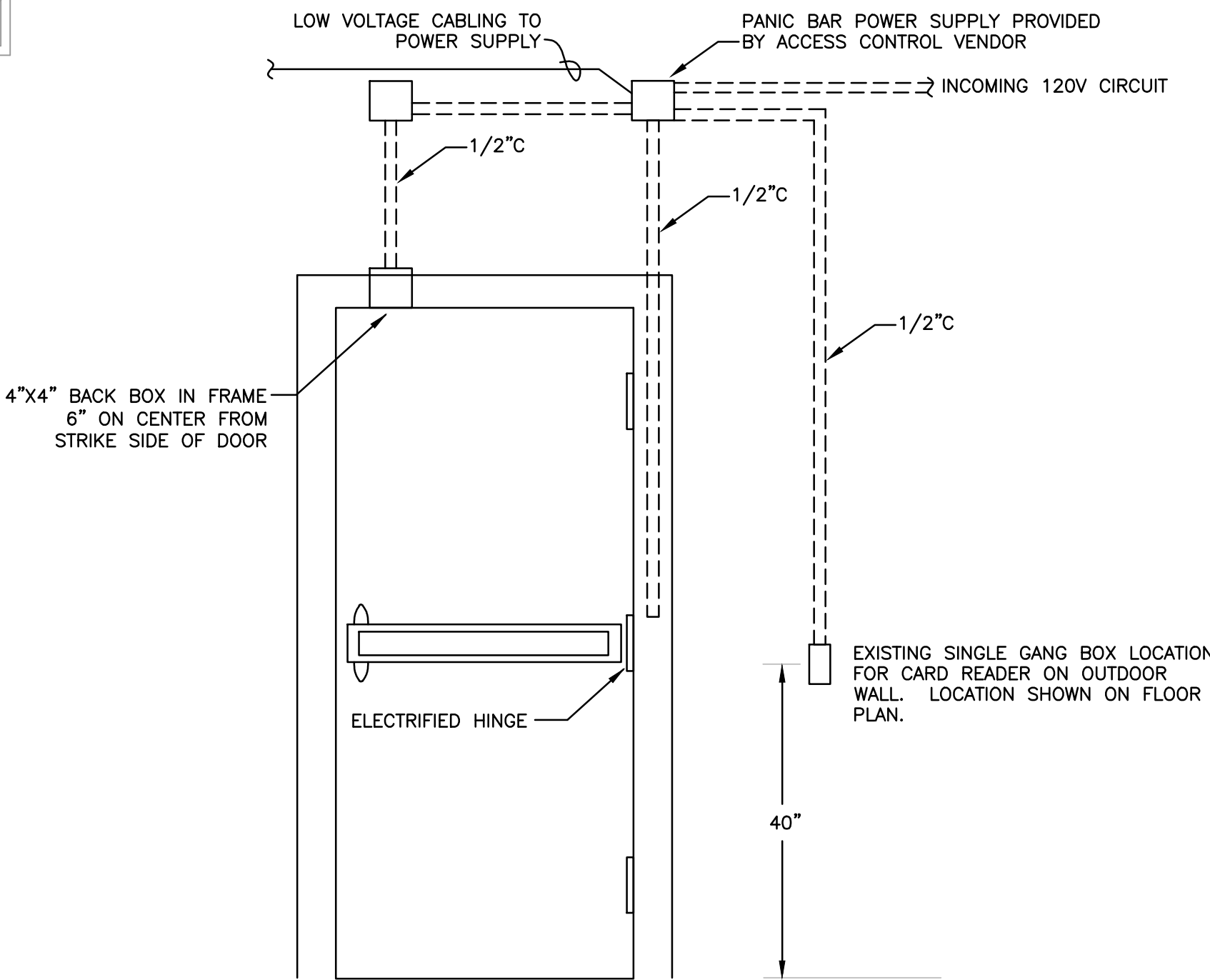
- HID RECESSED LIGHT FIXTURE CONNECTED TO NORMAL POWER
- ◐ HID RECESSED LIGHT FIXTURE CONNECTED TO EMERGENCY POWER
- ⋈ SINGLE POLE SWITCH
- ⊠ 120V PHOTOCELL; MOUNT AT HEIGHT OF EXISTING
- ⊞ LIGHTING CONTACTOR
- ⌈- EXISTING CCTV CAMERA
- 120V EQUIPMENT TERMINATION POINT ABOVE SUSPENDED CEILING. PROVIDE 120V EMERGENCY POWER AT JUNCTION BOX ABOVE THE CEILING & 4-PAIR #24 CAT 5E CABLE TO NEAREST RACK MOUNTED PATCH PANEL IN CLOSET FOR NETWORK CONNECTIVITY.
- ⋈CR ACCESS CONTROL CARD READER WALL STATION EQUAL TO XCEEDID#XF1500, WITH VISUAL LED INDICATOR, TAMPER DETECTION, AND IPV COMPLIANCE. "WP" INDICATES DAMP LOCATION RATING REQUIRED. MOUNT AT EXISTING DEVICE LOCATION
- HOMERUN TO PANEL
- ⌈ 120/208V SURFACE MOUNTED PANELBOARD

ELECTRICAL PLAN NOTES

- CONNECT TO 20A-1P, 120V BRKR AT PANEL LOCATION SHOWN. CIRCUIT SHALL BE CONTROLLED BY PHOTOCELL.
- REMOVE EXISTING DAMAGED 2P BRKR AT PANEL LOCATION SHOWN AND PROVIDE ONE 20A-1P, 120V BRKR EQUAL TO WESTINGHOUSE TYPE EHB1020 FOR NEW NORMAL POWER CIRCUIT. CIRCUIT SHALL ROUTE THROUGH NEW LIGHTING CONTACTOR AND CONTROLLED VIA EXISTING PHOTOCELL CURRENTLY USED FOR PARKING LTS AND FLAG LTS.
- REPLACE EXISTING WALL MOUNTED DECORATIVE FIXTURES WITH NEW F2 FIXTURES, AND RECONNECT TO EXISTING CIRCUIT.
- PROVIDE 1/2" C & JUNCTION BOXES ABOVE CEILING FOR CONNECTIONS TO DOOR HARDWARE. UTILIZE EXISTING CONDUIT WITHIN WALLS OR SURFACE WIREMOLD AND CONNECT AS NEEDED FOR NEW DOOR HARDWARE; RE; DOOR ACCESS CONTROL DETAIL ON THIS SHEET.
- RECONNECT 120V EMERGENCY POWER TO NEW DOOR CONTROLLER/POWER SUPPLY LOCATION ABOVE CEILING OF DOOR. IF EXISTING CIRCUIT TO DOOR CONTROLLER IS NOT ON EMERGENCY POWER, OBTAIN POWER FROM NEAREST UNSWITCHED EMERGENCY SOURCE WITHIN LOBBY.

LIGHT FIXTURE SCHEDULE

- F1 PRESCOLITE #LFM470EB-120-5WV, OR EQUAL, 8" RECESSED HID DOWNLIGHT FIXTURE FOR DAMP LOCATION, OPEN LAMP HOUSING, CLEAR FINISHED ALZAK REFLECTOR, 1-70W ED-17 M.H. LAMP AND 120 VOLT BALLAST
- F2 ANTIQUE STREET LAMPS #LT23B 70M MED ACT GR3 120 ANDB, OR EQUAL, DECORATIVE LANTERN WITH 70 WATT METAL HALIDE LAMP, & 120 VOLT BALLAST, MOUNTED ON #LYWB ANDB WALL BRACKET ARM, LANTERN & BRACKET ARM TO BE DARK BRONZE FINISH. PROVIDE BLOCKING IN WALL AT EXISTING OUTLET BOX AS REQUIRED.



2 ACCESS DOOR ACCESS CONTROL DETAIL  
SCALE: NTS

1 ELECTRICAL PLAN  
SCALE: 1/8" = 1'-0"

Revisions:		Date		CONSULTANTS:		Professional Seal:		ARCHITECT/ENGINEERS:		11038-BXP		Drawing Title		Project Title		Project Number		Office of Facilities Management Department of Veterans Affairs			
				<div>E E Consultants, Inc. PROFESSIONAL ELECTRICAL ENGINEERS 301 Jackson St. Suite 204 Alexandria, LA 71301 PH: (318) 445-8870 FAX: (318) 445-4350</div>		<div>STATE OF LOUISIANA RAYMOND J. DIANN, JR. REG. NO. 10862 PROFESSIONAL ENGINEER ELECTRICAL ENGINEER 8-3-72</div>		<div>BH&amp;B Barron Heinberg &amp; Brocato Architecture, Engineering Planning, Interior Design 1015 Wisteria Street Alexandria, Louisiana 71301 Tel: 318-443-7291 Fax: 318-487-0678</div>		ELECTRICAL PLAN		ADA COMPLIANT ACCESS FOR BUILDING 2		502-11-223 Building Number 2							
												Approved: Project Director		Location VAMC; ALEXANDRIA, LA.		Drawing Number E100					
														Date AUGUST 2012		Checked RJD		Drawn DMT			