

GENERAL NOTES:

A. "ETR" ADJACENT TO A DEVICE, FIXTURE, OR PIECE OF EQUIPMENT INDICATES ITEM SHALL REMAIN. MAINTAIN EXISTING ELECTRICAL CONNECTIONS UNLESS OTHERWISE NOTED.

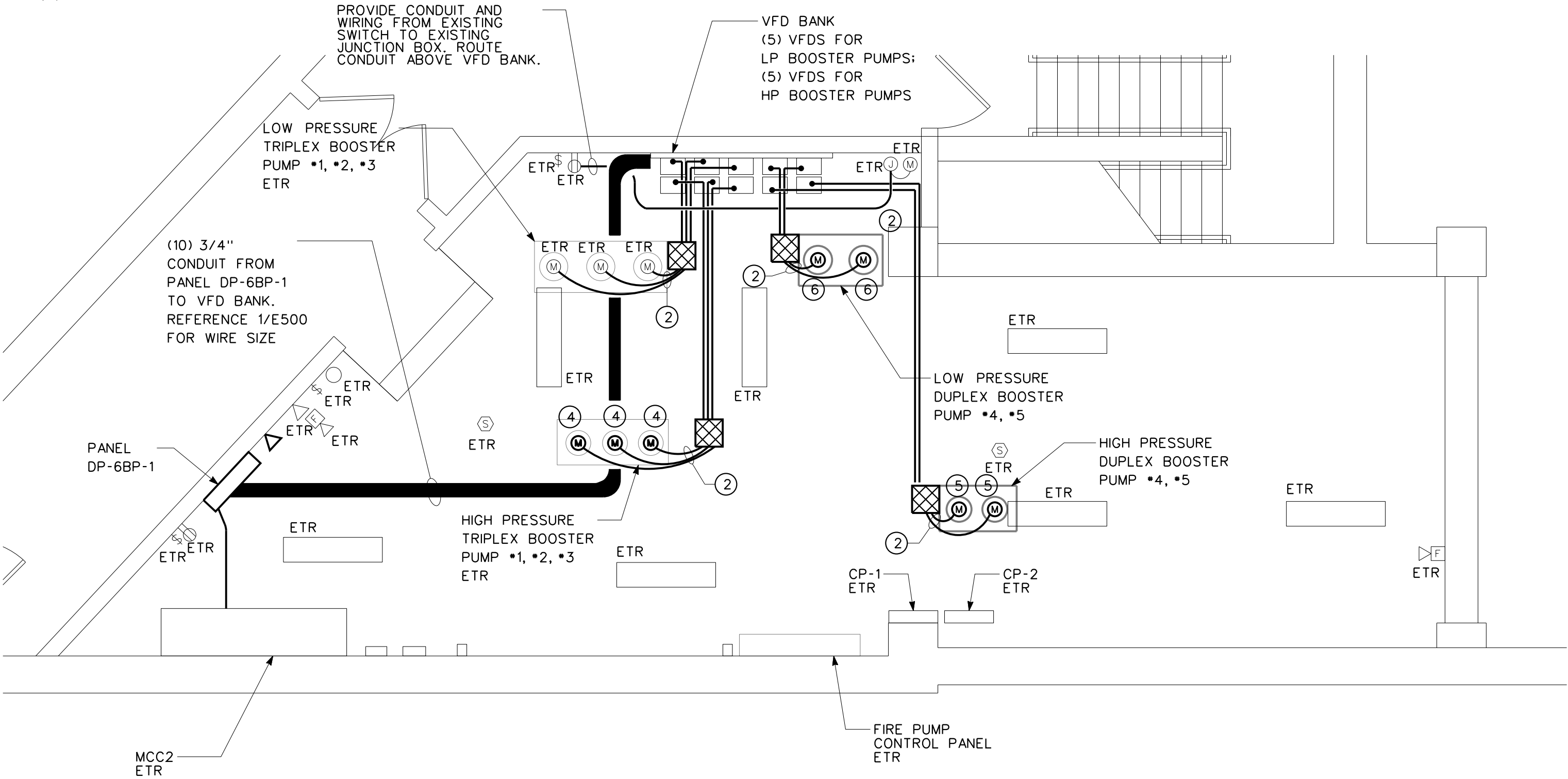
DRAWING NOTES:

- 1 DISCONNECT AND REMOVE BOOSTER PUMP VFD AND ALL ASSOCIATED POWER AND CONTROL WIRING IN ITS ENTIRETY TO PUMPS AND BACK TO SOURCE PANEL.
- 2 PROVIDE LIQUID-TIGHT FLEXIBLE METAL CONDUIT FROM JUNCTION BOX TO BOOSTER PUMP MOTOR.
- 3 DISCONNECT AND REMOVE EXISTING MOTOR AND ALL ASSOCIATED CONTROLS AND ELECTRICAL WORK. PUMP TO REMAIN.
- 4 CONTRACTOR SHALL INSTALL NEW 5HP MOTOR, PROVIDED BY OWNER, TO EXISTING BOOSTER PUMP.
- 5 INSTALL HIGH PRESSURE BOOSTER PUMP AND MOTOR, PROVIDED BY OWNER.
- 6 INSTALL LOW PRESSURE BOOSTER PUMP AND MOTOR, PROVIDED BY OWNER.

PARTIAL FLOOR DEMOLITION PLAN - ELECTRICAL

1

1/4" = 1'-0"



PARTIAL FLOOR PLAN - ELECTRICAL

2

1/4" = 1'-0"

ISSUE FOR BID		03/27/13
Revisions		Date

VA WESTERN NEW YORK HEALTHCARE SYSTEM
3495 BAILEY AVENUE
BUFFALO, NEW YORK 14215

CLINICAL ENGINEERING	DATE	ENGINEERING MANAGER	DATE
INFECTION CONTROL	DATE	CARELINE MANAGER	DATE
SAFETY OFFICER	DATE	CHIEF OF STAFF	DATE

Drawing Title	
PARTIAL FLOOR PLANS	
MEDICAL CENTER DIRECTOR	
ASSOCIATE MEDICAL CENTER DIRECTOR	

Project Title		
BOOSTER PUMP VFD'S		
Building Number	Checked	Drawn
1	JFW	JTR
Location		
V.A.M.C. BUFFALO, NEW YORK		

Date
MARCH 27, 2013
Station No.
528
08-116-E100

