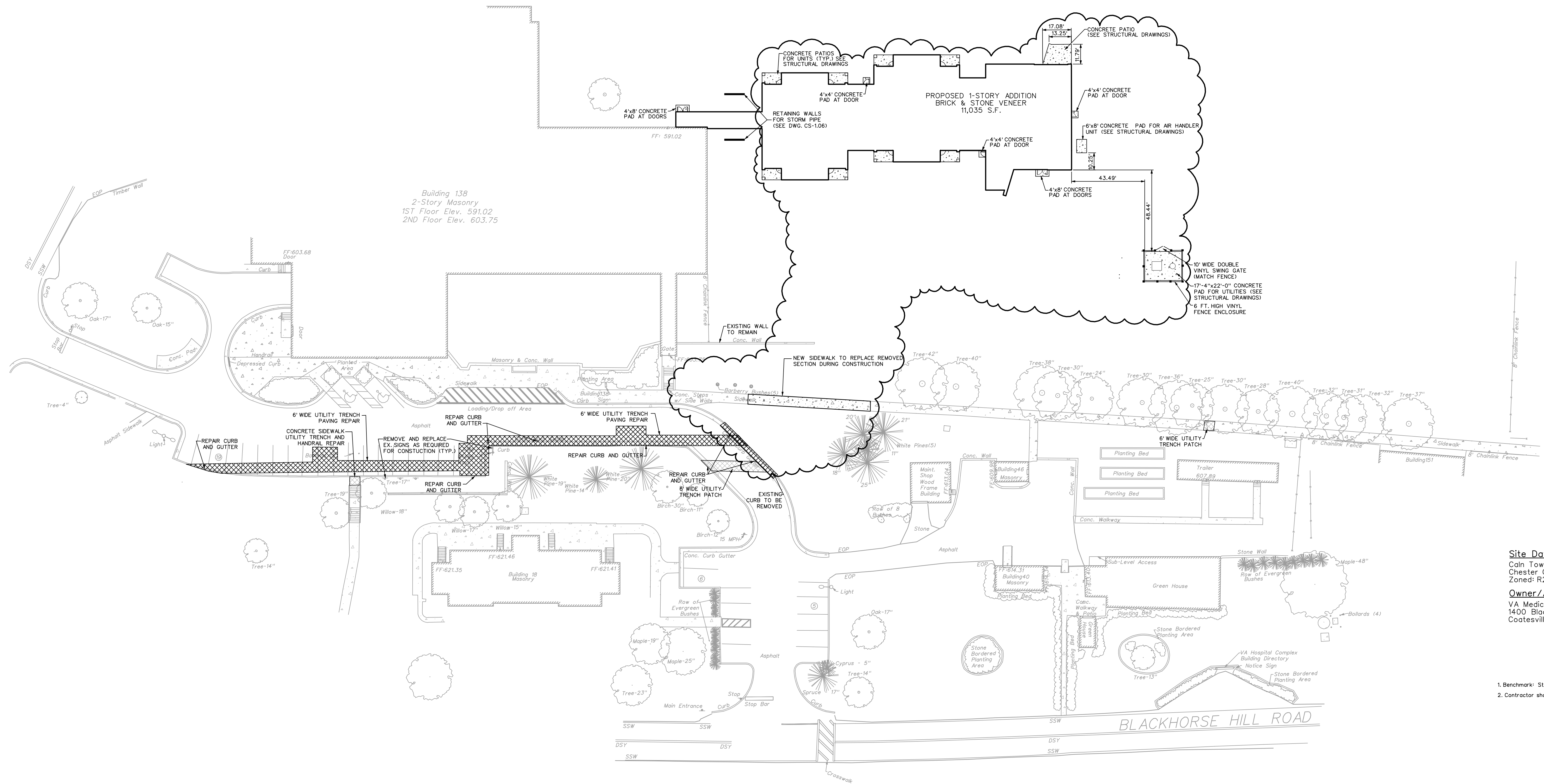


Location Map
Scale: 1" = 1000'

Legend

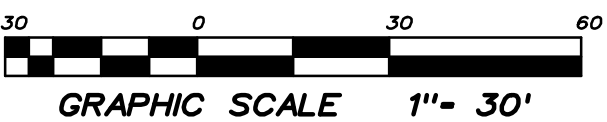
- Existing Building
- Existing Curb
- Existing Edge of Pavement
- Existing Lighting
- Proposed Building
- Proposed Sidewalk



Site Data:
Cain Township
Chester County, PA
Zoned: R2 Residential District
Owner/Applicant:
VA Medical Center
1400 Blackhorse Hill Road
Coatesville, PA 19320

General Notes

- Benchmark: Storm Manhole Rim East of Bldg 138, El. 606.53
- Contractor shall verify all existing utility locations on-site prior to start of construction.



25% Construction Documents	02/23/10	ASSOCIATES DIRECTOR PATIENT CARE		INFECTION CONTROL		SUPERVISOR M&O		PROJECT MANAGER		<div>ARCHITECT / ENGINEERS :</div> <div><div>Francis Cauffman</div><div>2120 Arch Street Philadelphia, PA 19103</div><div>Tel (215) 568-8250 Fax (215) 568-2639</div></div>	<div>ARCHITECT / ENGINEERS :</div> <div><div>H.F. Lenz Company</div><div>1407 Scalp Avenue Johnstown, PA 15904-3314 T: 814.262.6300 F: 814.269.8301</div><div><div>EF</div>EUSTACE ENGINEERING</div><div>447 West Moreland Road 3rd Floor Wilkes-Barre, PA 18700 Tel: (717) 340-8757 Fax: (717) 340-8758 www.eustaceeng.com</div></div>	<div><div>MARTIN J. EUSTACE, III</div><div>PROFESSIONAL ENGINEER</div><div>043529-C</div></div> <div><i>Martin J. Eustace III</i></div>	Drawing Title		Project Title		Date		<div>V</div> <div>A</div> <div>V</div>
50% Construction Documents	04/23/10							CIVIL					CONSTRUCT HOSPICE		02-23-2010				
Revised per Chester Cty. SCD 1st Review	06/25/10							LAND DEVELOPMENT PLAN					COATESVILLE		Project No.				
100% Construction Documents	06/28/10	TEAMSTER		CONTRACTING OFFICER		GEN UTILITIES		SAFETY OFFICE							542-CSI-201				
100% Bid Documents	08/05/10														DRAWING No.				
Addendum #4	11/22/10	POLICE		PATIENT SAFETY		GEN PROPERTIES		SUPERVISOR PROJECT SECTION							CS-1.01				
Revisions		Date								Approved: Chief Engineering Service		Drawn		Building Number		DRAWING No.			
																CS-1.01			
																Dwg. Of			