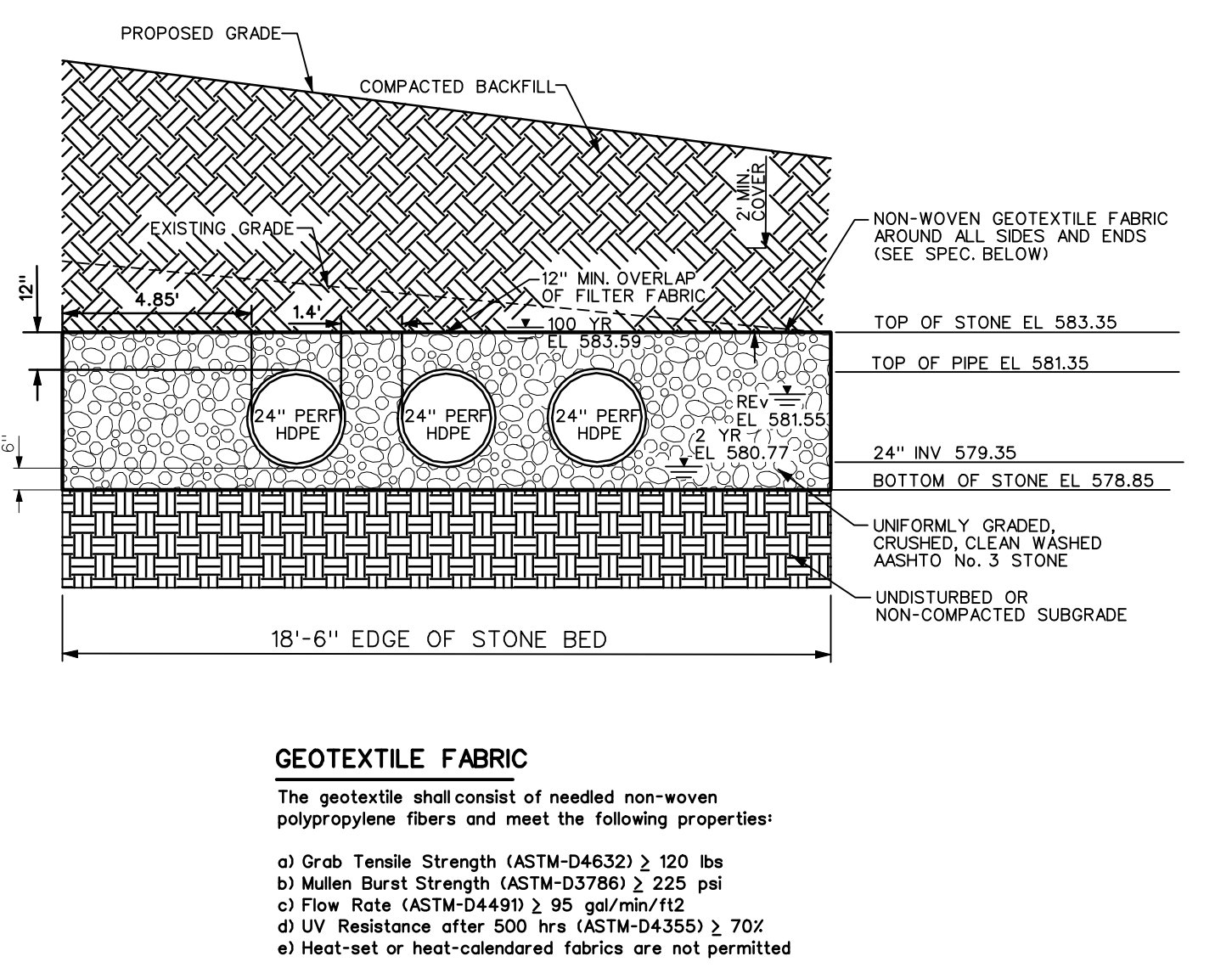
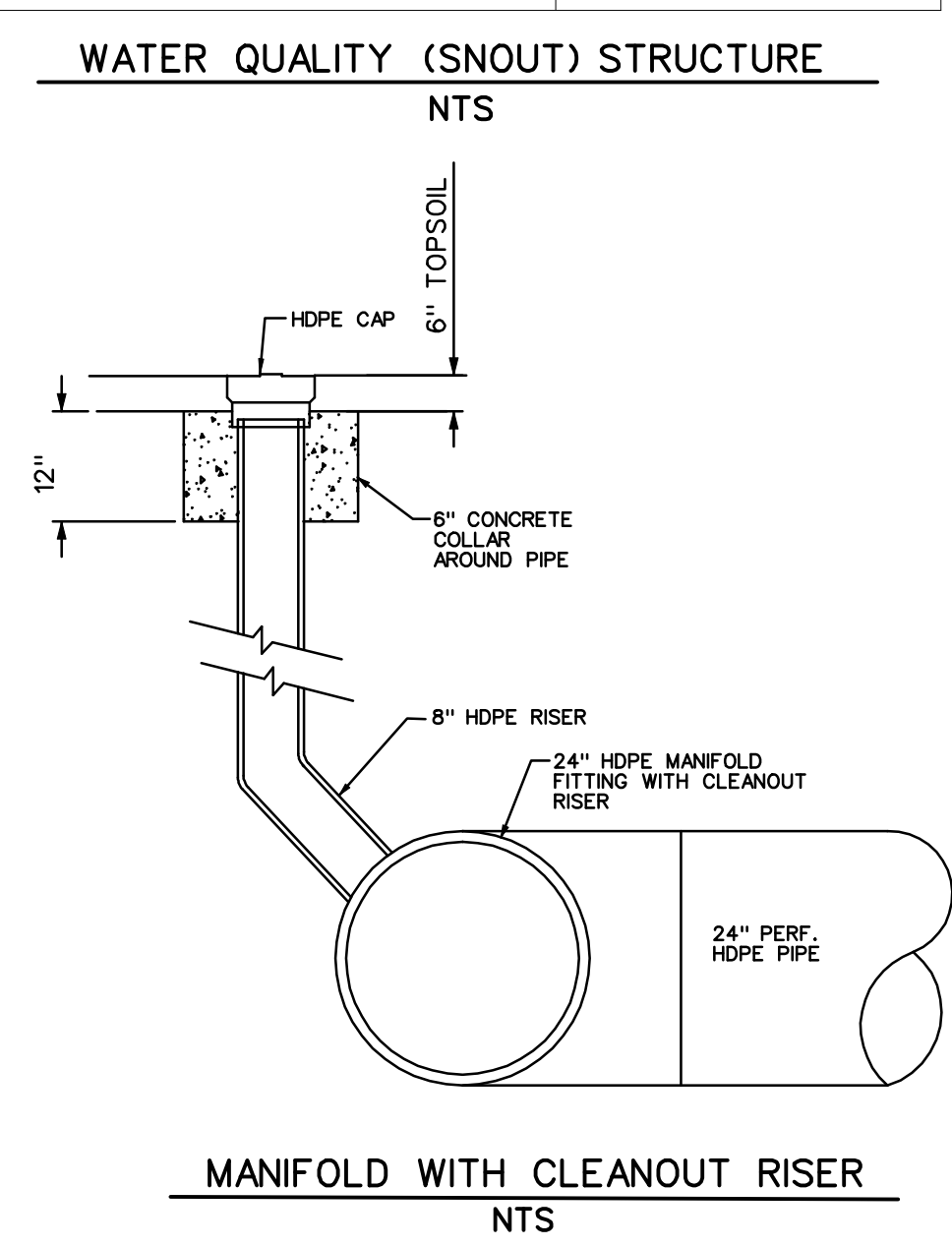
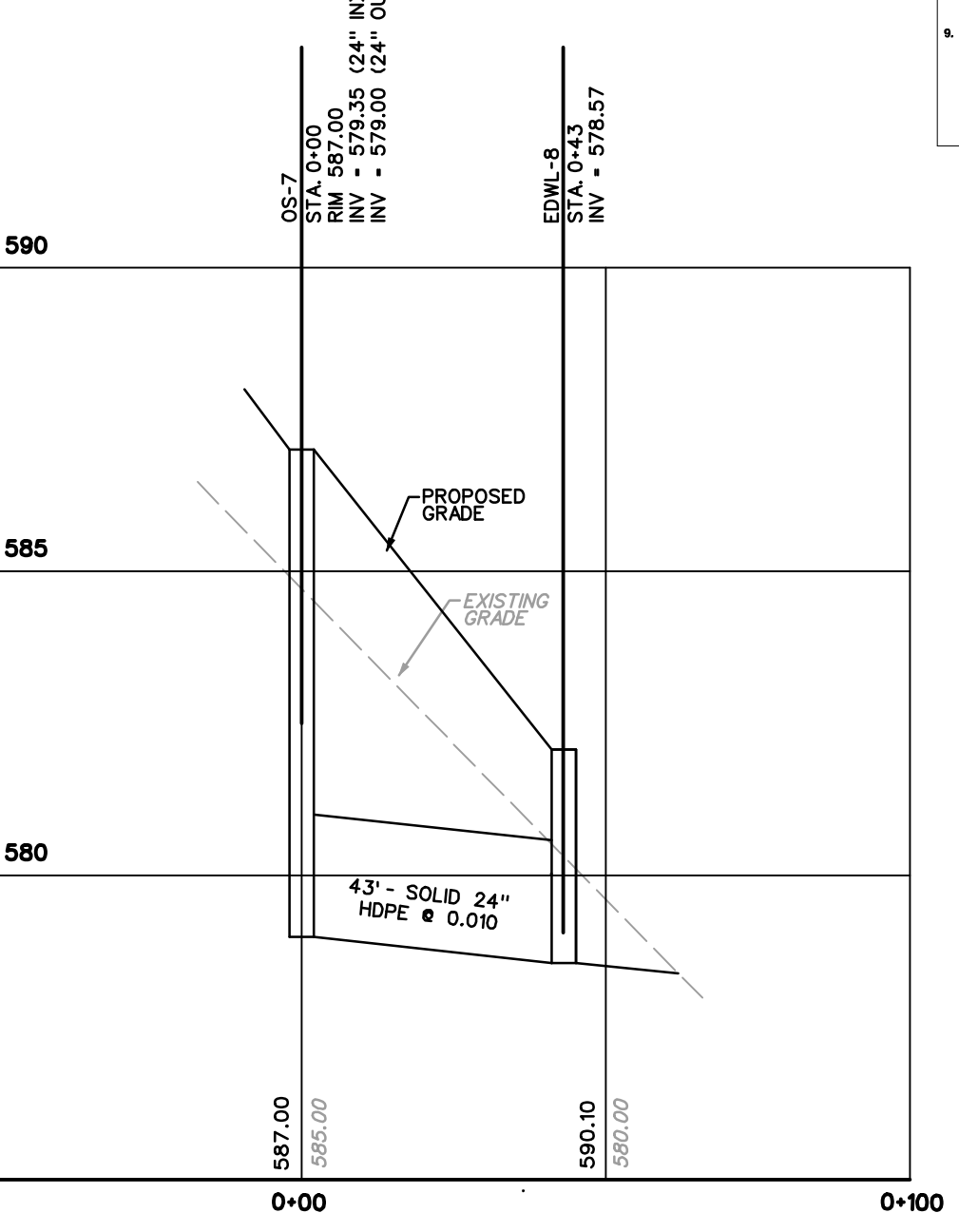
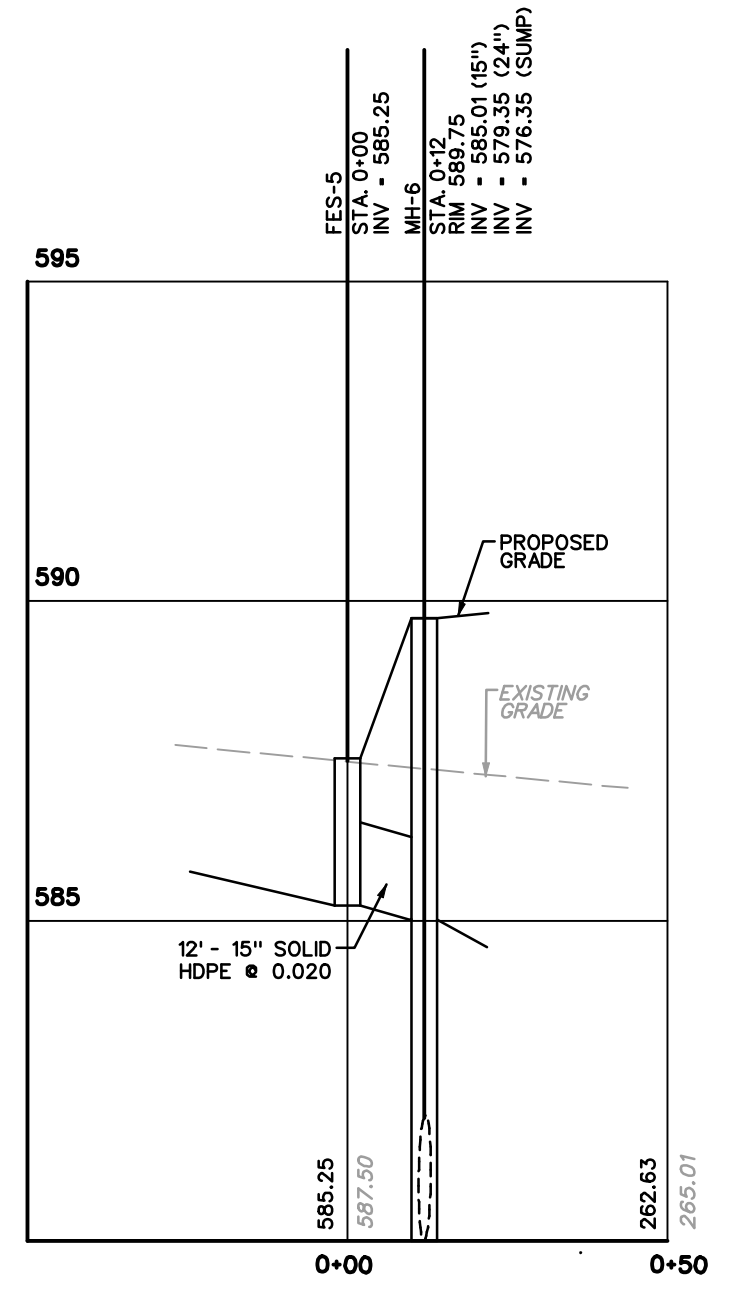
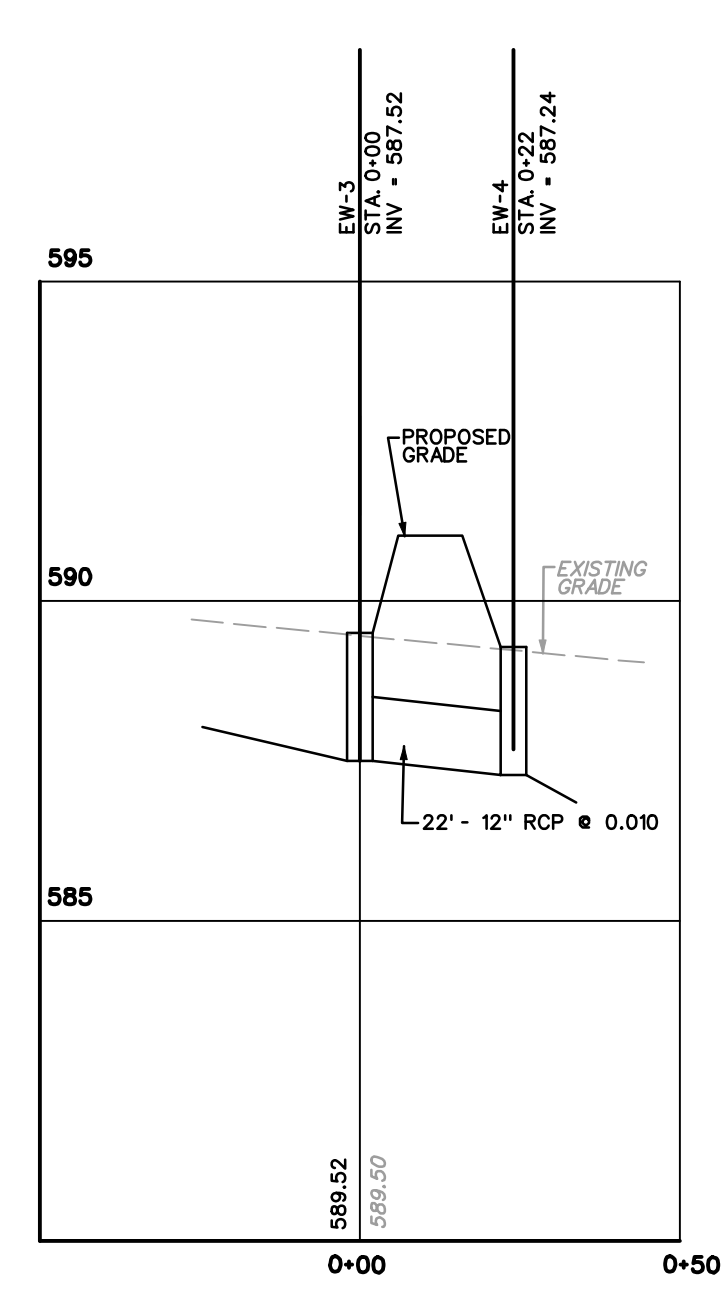
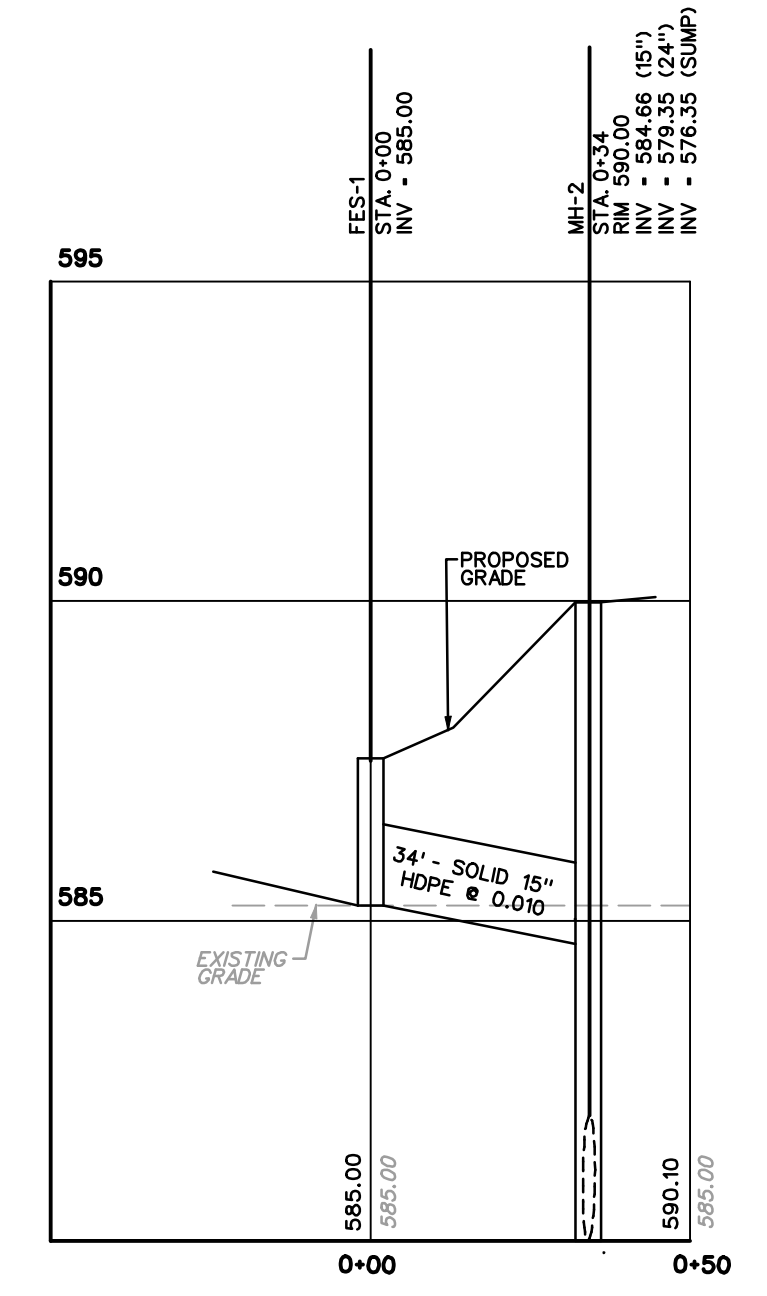
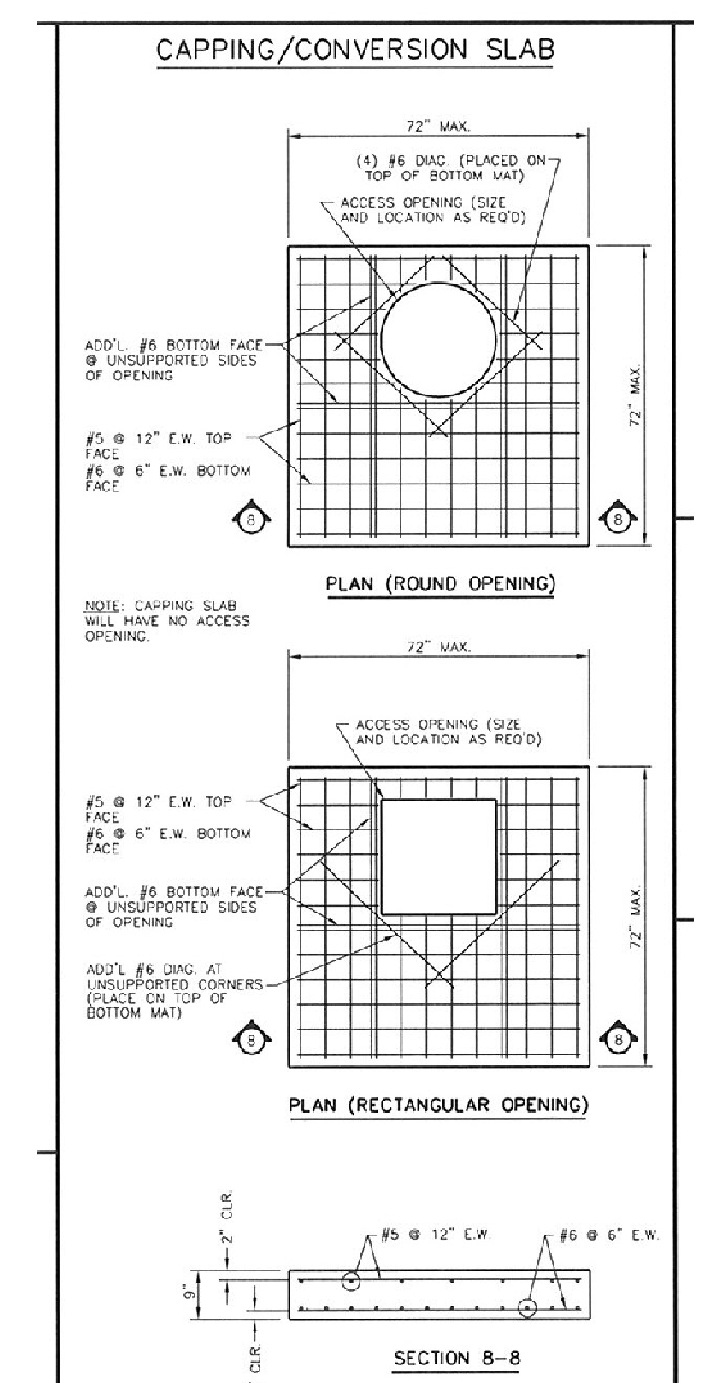
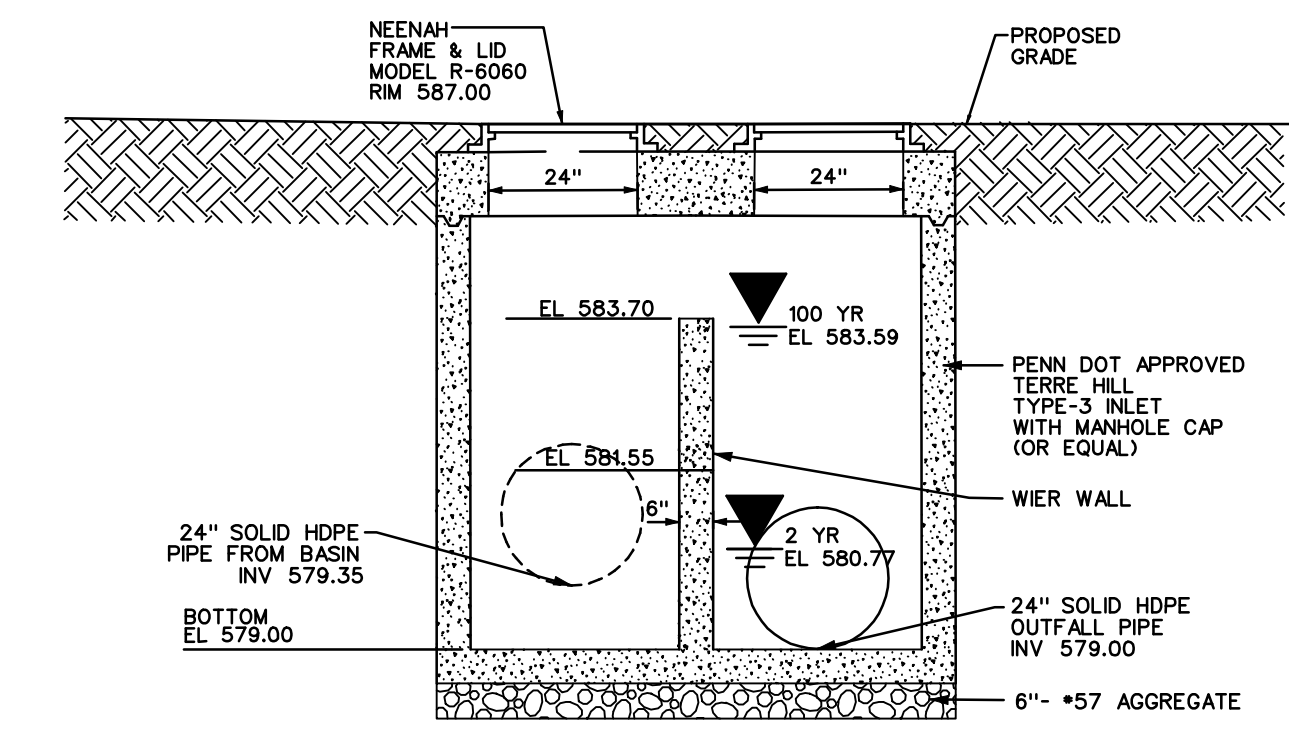
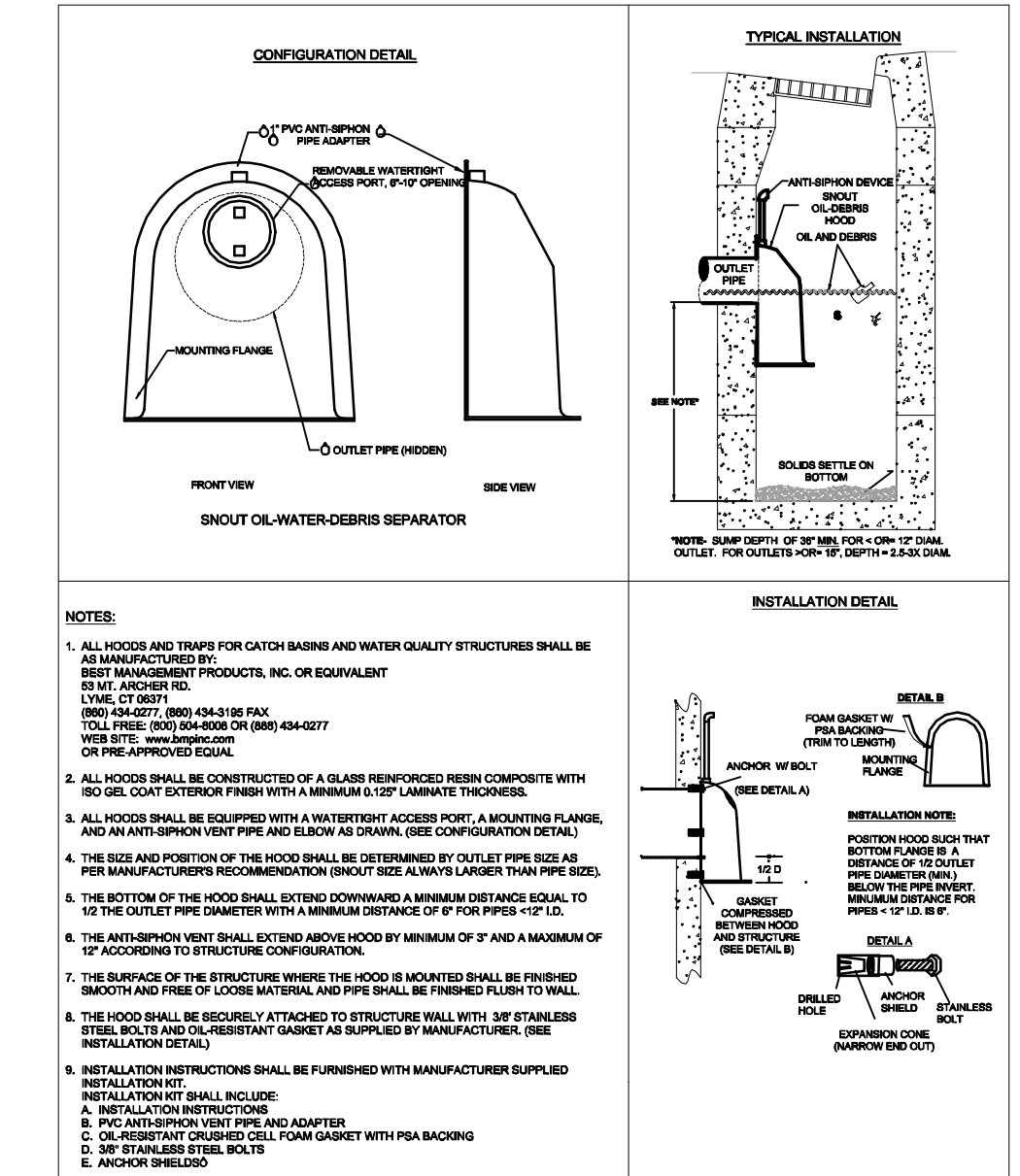
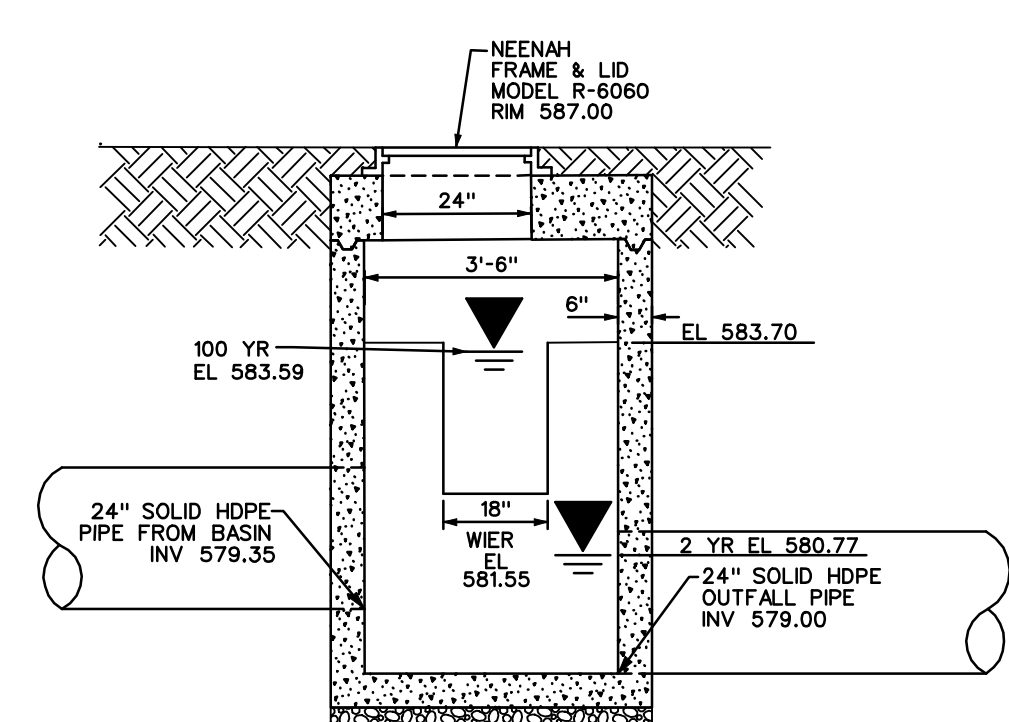
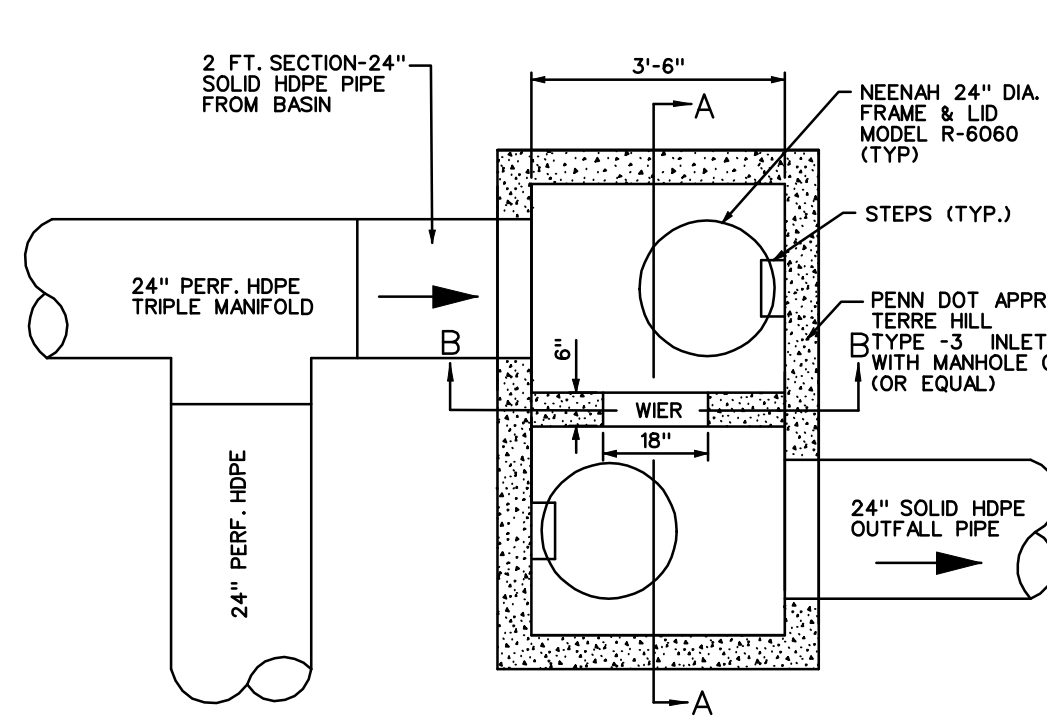
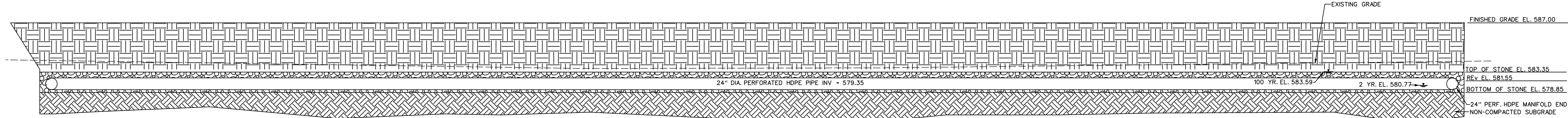
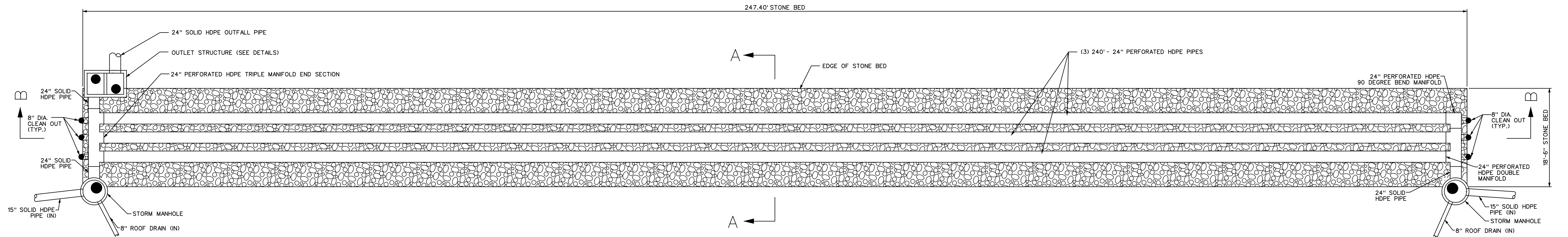


Three eighths inch = one foot
one and one half inches = one foot
one inch = one foot
one quarter inch = one foot
one half inch = one foot
three eighths inch = one foot
one eighth inch = one foot
one quarter inch = one foot
one eighth inch = one foot



GEOTEXTILE FABRIC
The geotextile shall consist of needed non-woven polypropylene fibers and meet the following properties:
a) Grab Tensile Strength (ASTM-D4632) ≥ 120 lb
b) Mullen Burst Strength (ASTM-D3786) ≥ 225 psi
c) Flow Rate (ASTM-D4491) ≤ 95 gal/min/ft²
d) UV Resistance after 500 hrs (ASTM-D4368) ≥ 70%
e) Heat-set or heat-calendered fabrics are not permitted

GENERAL NOTES:
1. MATERIALS AND CONSTRUCTION SHALL COMPLY WITH SPECIFICATION FOR SECTION 314.
2. ALL CONCRETE SHALL BE CAST IN PLACE AND SHALL BE FINISHED TO THE FINISHED GRADE.
3. ALL REINFORCED SHALL COMPLY WITH SPECIFICATION FOR SECTION 310 AND SHALL BE FINISHED TO THE FINISHED GRADE.
4. ALL REINFORCED SHALL BE FINISHED TO THE FINISHED GRADE.
5. ALL REINFORCED SHALL BE FINISHED TO THE FINISHED GRADE.
6. ALL REINFORCED SHALL BE FINISHED TO THE FINISHED GRADE.
7. ALL REINFORCED SHALL BE FINISHED TO THE FINISHED GRADE.
8. ALL REINFORCED SHALL BE FINISHED TO THE FINISHED GRADE.
9. ALL REINFORCED SHALL BE FINISHED TO THE FINISHED GRADE.
10. ALL REINFORCED SHALL BE FINISHED TO THE FINISHED GRADE.

25% Construction Documents 50% Construction Documents Revised per Chester Cty. SCD 1st Review 100% Construction Documents 100% Bid Documents	02/23/10 04/23/10 06/25/10 06/28/10 08/05/10	ASSOCIATES DIRECTOR PATIENT CARE TEAMSTER POLICE	INFECTION CONTROL CONTRACTING OFFICER PATIENT SAFETY	SUPERVISOR M&O GEN UTILITIES GEN PROPERTIES	PROJECT MANAGER SAFETY OFFICE SUPERVISOR PROJECT SECTION	ARCHITECT / ENGINEERS : H.F. Lenz Company 1407 Scalp Avenue Johnstown, PA 15904-3314 T: 814.269.6300 F: 814.269.9301 Francis Cauffman 2120 Arch Street Philadelphia, PA 19103 Tel: (215) 568-8250 Fax: (215) 568-2639	Mechanical, Electrical, Fire Protection, and Planning Engineer H.F. Lenz Company 1407 Scalp Avenue Johnstown, PA 15904-3314 T: 814.269.6300 F: 814.269.9301 E.E. EUSTACE ENGINEERING 447 West Monmouth Road 3rd Floor Wilson Grove, PA 15090 Tel: (215) 340-8707 Fax: (215) 340-8708 www.eustaceeng.com	Drawing Title CIVIL POST CONSTRUCTION STORMWATER MANAGEMENT PLAN - BASIN DETAILS Approved: Chief Engineering Service Approved: Medical Center Director	Project Title CONSTRUCT HOSPICE COATESVILLE Building Number Location COATESVILLE, PENNSYLVANIA	Date 02-23-2010 Project No. 542-CSI-201 DRAWING No. CS-1.08 Dwg. Of
--	--	--	--	---	--	---	---	--	---	---