

A

three inches = one foot

B

one and one half inches = one foot

C

one inch = one foot

D

three quarters inch = one foot

E

one half inch = one foot

F

one quarter inch = one foot

one eighth inch = one foot

one eighth inch = one foot

A

B

C

D

E

F

G

100% Construction Documents

08/05/10

ASSOCIATES DIRECTOR PATIENT CARE

INFECTION CONTROL

SUPERVISOR M&O

PROJECT MANAGER

TEAMSTER

CONTRACTING OFFICER

GEN UTILITIES

SAFETY OFFICE

POLICE

PATIENT SAFETY

GEN PROPERTIES

SUPERVISOR PROJECT SECTION

Revisions

Date

ARCHITECT / ENGINEERS :

Francis Cauffman

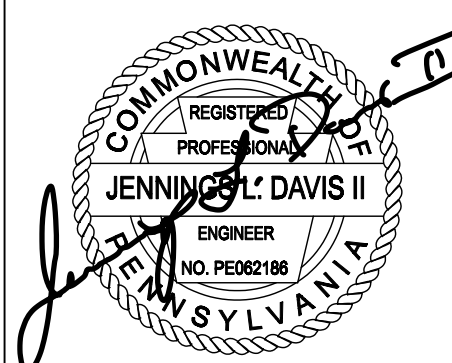
2120 Arch Street
Philadelphia, PA 19103

Tel (215) 568-8250
Fax (215) 568-2839

Mechanical, Electrical, Fire Protection, and Plumbing Engineer
H.F. Lenz Company

1407 Scalp Avenue
Johnstown, PA 15904-3314
T: 814.269.9300
F: 814.269.9301

EUSTACE ENGINEERING
447 West Moreland Road
3rd Floor
Wilton Grove, PA, 19080
Tel: (215) 348-8767
Fax: (215) 348-8768
www.eustaceeng.com



Drawing Title

ELECTRICAL ONE LINE DIAGRAMS

Approved: Chief Engineering Service

Drawn
RJD

Approved: Medical Center Director

Checked
JLD

Project Title
CONSTRUCT HOSPICE
COATESVILLE

Building Number

Location
COATESVILLE, PENNSYLVANIA

Date

08-05-2010

Project No.

542-CSI-201

DRAWING No.

EK6.03

Dwg. Of

AV

FEEDER SCHEDULE FOR LOW VOLTAGE ONE-LINE DIAGRAM

THIS IS A STANDARD SCHEDULE. NOT ALL FEEDERS NECESSARILY APPLY TO THIS PROJECT

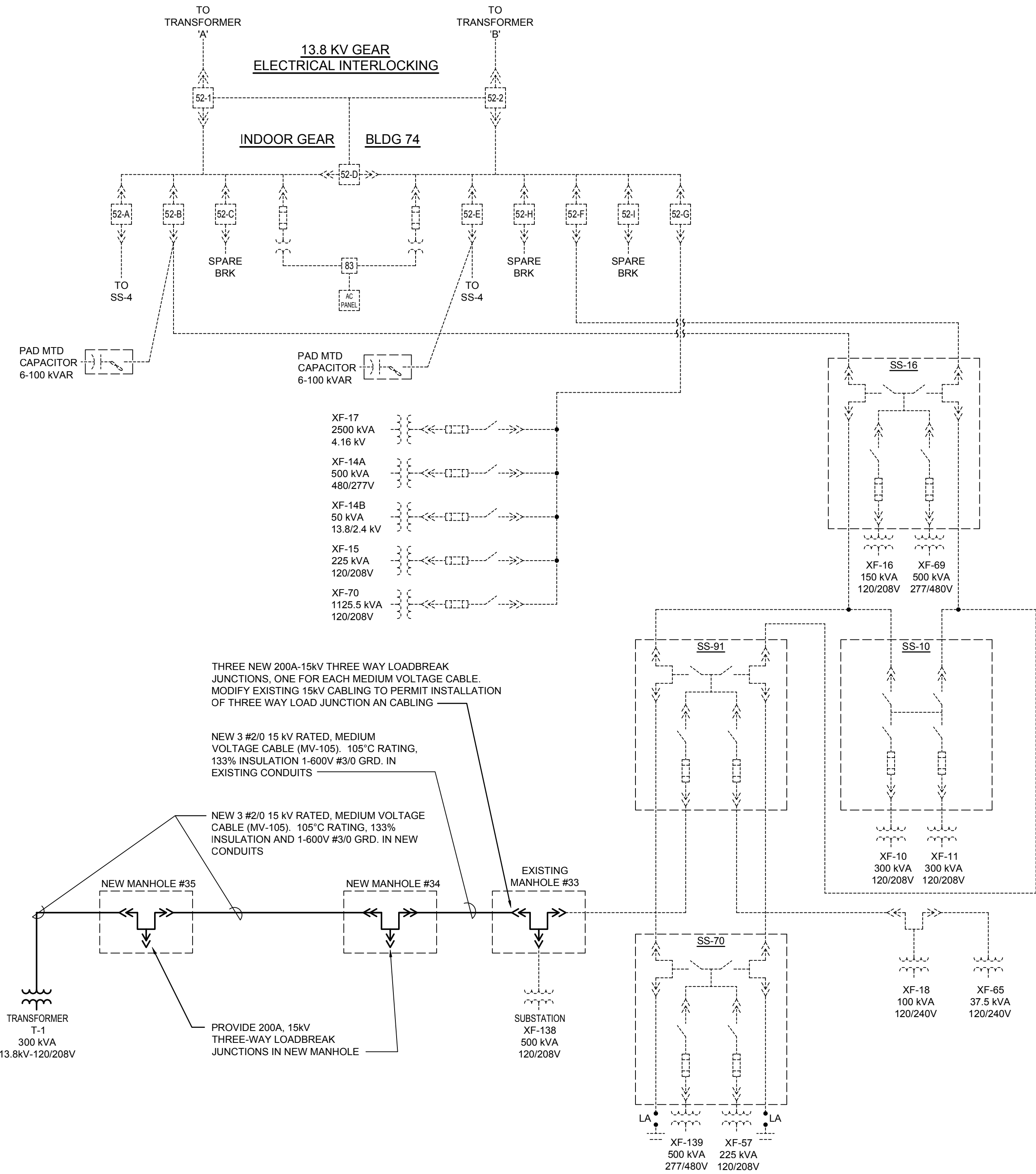
FEEDER #	# SETS	#CONDUCTORS	PHASE SIZE	NEUTRAL SIZE	GROUND SIZE	CONDUIT SIZE	MAX. AMPS @ 80°C	MAX. AMPS @ 75°C
1	1	5	12	12	12	1 1/2"	25	N/A
2	1	5	10	10	10	1 1/2"	30	N/A
3	1	5	8	8	10	3/4"	40	N/A
4	1	5	6	6	8	1"	55	N/A
5	1	5	4	4	8	1 1/4"	70	N/A
6	1	5	3	3	8	1 1/4"	85	N/A
7	1	5	2	2	6	1 1/4"	95	115
8	1	5	1	1	6	1 1/2"	110	130
9	1	5	1/0	1/0	6	2"	N/A	150
10	1	5	2/0	2/0	6	2"	N/A	175
11	1	5	3/0	3/0	6	2"	N/A	200
12	1	5	4/0	4/0	4	2 1/2"	N/A	230
13	1	5	250 KCMIL	250 KCMIL	4	2 1/2"	N/A	255
14	1	5	300 KCMIL	300 KCMIL	4	2 1/2"	N/A	285
15	1	5	350 KCMIL	350 KCMIL	3	3"	N/A	310
16	1	5	400 KCMIL	400 KCMIL	3	3"	N/A	335
17	1	5	500 KCMIL	500 KCMIL	3	3"	N/A	380
18	2	5	3/0	3/0	3	2"	N/A	400
19	2	5	350 KCMIL	350 KCMIL	1	2 1/2"	N/A	600
20	3	5	300 KCMIL	300 KCMIL	1/0	2 1/2"	N/A	800
21	3	5	300 KCMIL	300 KCMIL	2/0	4"	N/A	800
22	3	5	500 KCMIL	500 KCMIL	2/0	4"	N/A	1000
23	4	5	350 KCMIL	350 KCMIL	3/0	3"	N/A	1200
24	5	5	500 KCMIL	500 KCMIL	4/0	4"	N/A	1600
25	6	5	500 KCMIL	500 KCMIL	250 KCMIL	4"	N/A	2000
26	7	5	500 KCMIL	500 KCMIL	350 KCMIL	4"	N/A	2500
27	8	5	500 KCMIL	500 KCMIL	400 KCMIL	4"	N/A	3000

NOTES:

1. NUMBER OF CONDUCTORS LISTED REFERS TO THE FOLLOWING: THREE (3) PHASE CONDUCTORS, ONE (1) NEUTRAL CONDUCTOR, AND ONE (1) GROUND CONDUCTOR
2. FEEDERS TO MOTOR LOADS SHALL BE ONLY THREE (3) PHASE CONDUCTORS AND ONE (1) GROUND. NO NEUTRAL IS REQUIRED

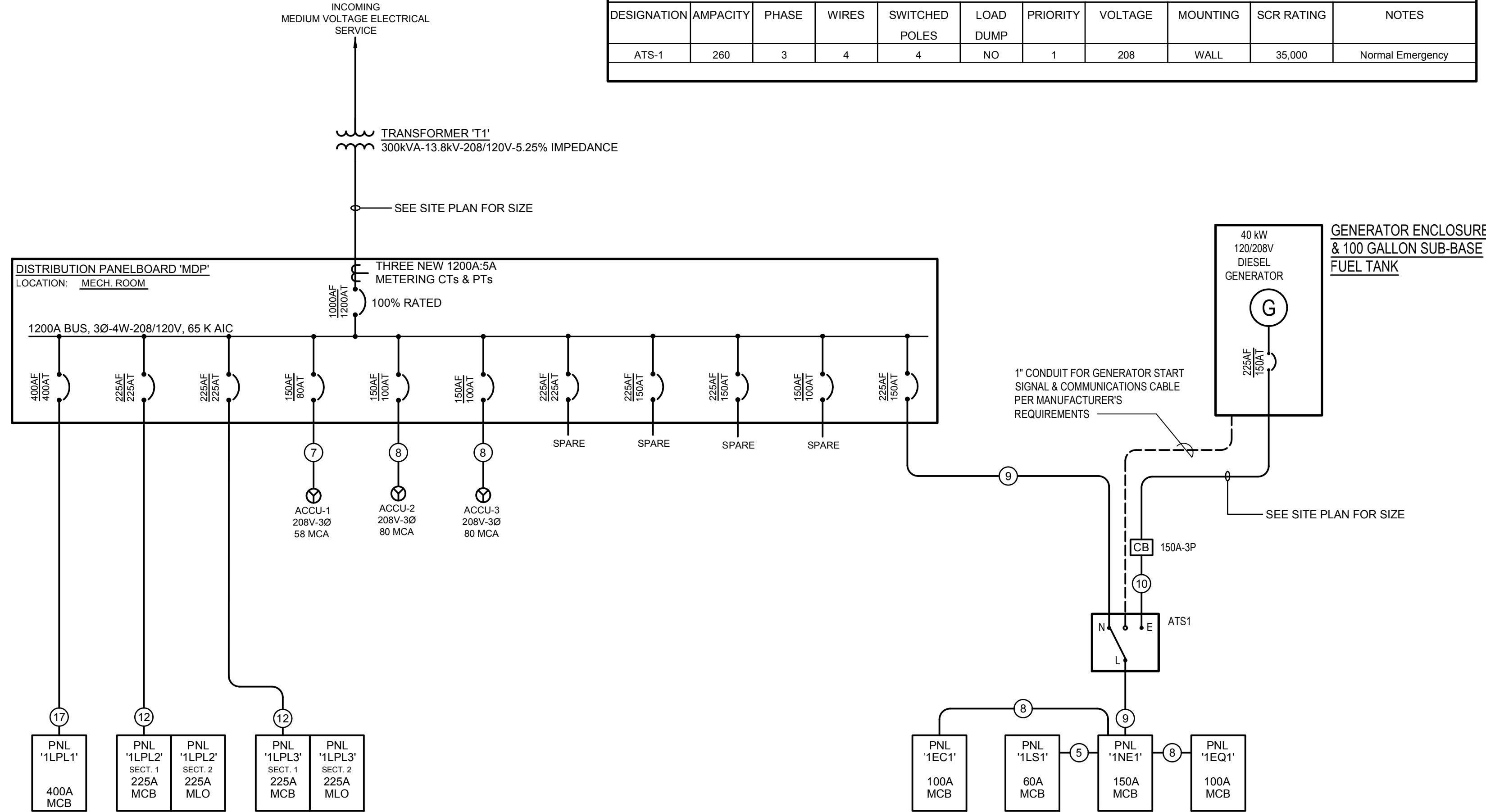
AUTOMATIC TRANSFER SWITCH SCHEDULE

DESIGNATION	AMPACITY	PHASE	WIRES	SWITCHED POLES	LOAD DUMP	PRIORITY	VOLTAGE	MOUNTING	SCR RATING	NOTES
ATS-1	260	3	4	4	NO	1	208	WALL	35,000	Normal Emergency



1 MEDIUM VOLTAGE ONE-LINE DIAGRAM

Scale: None



2 LOW VOLTAGE ONE-LINE DIAGRAM

Scale: None