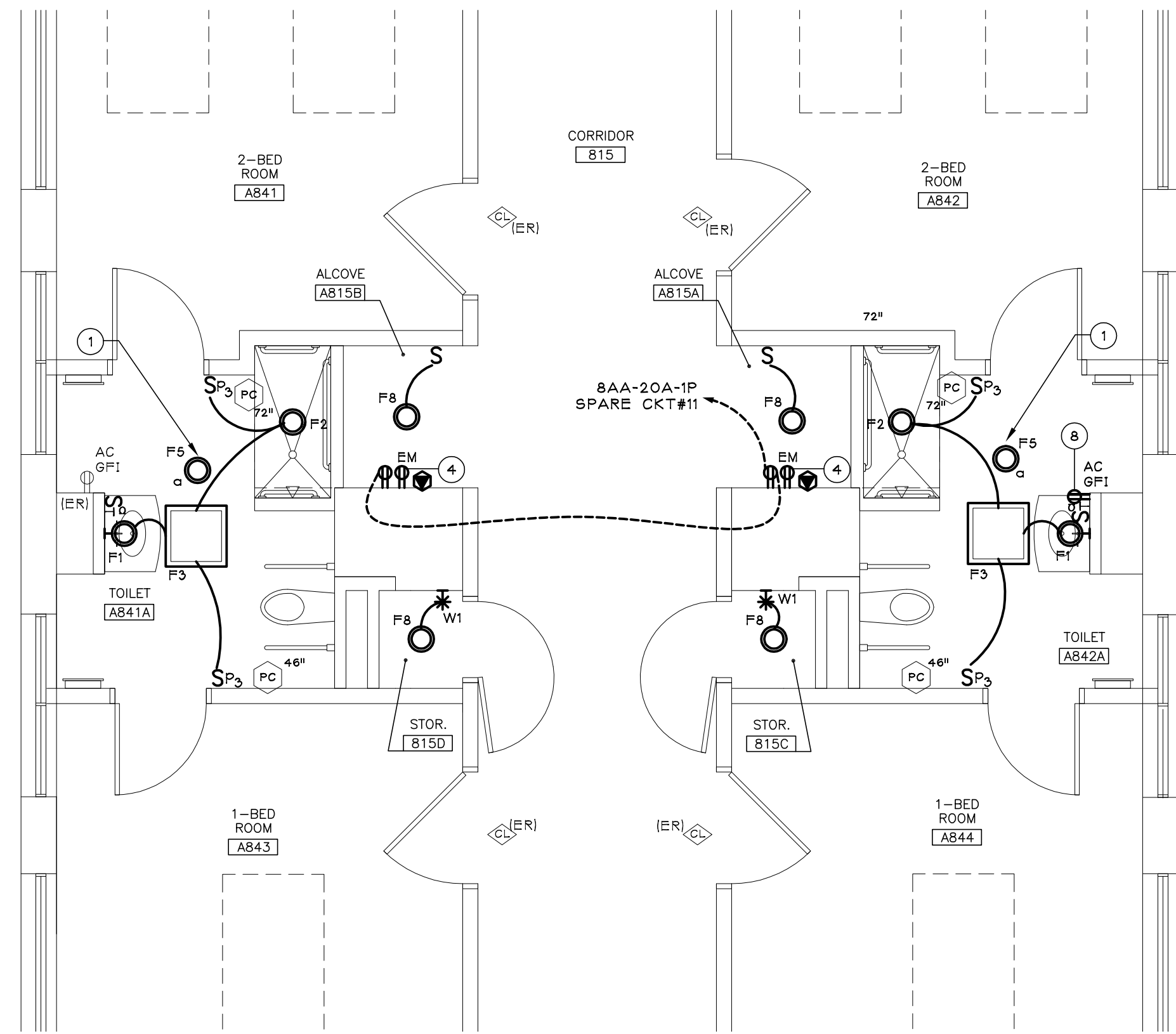


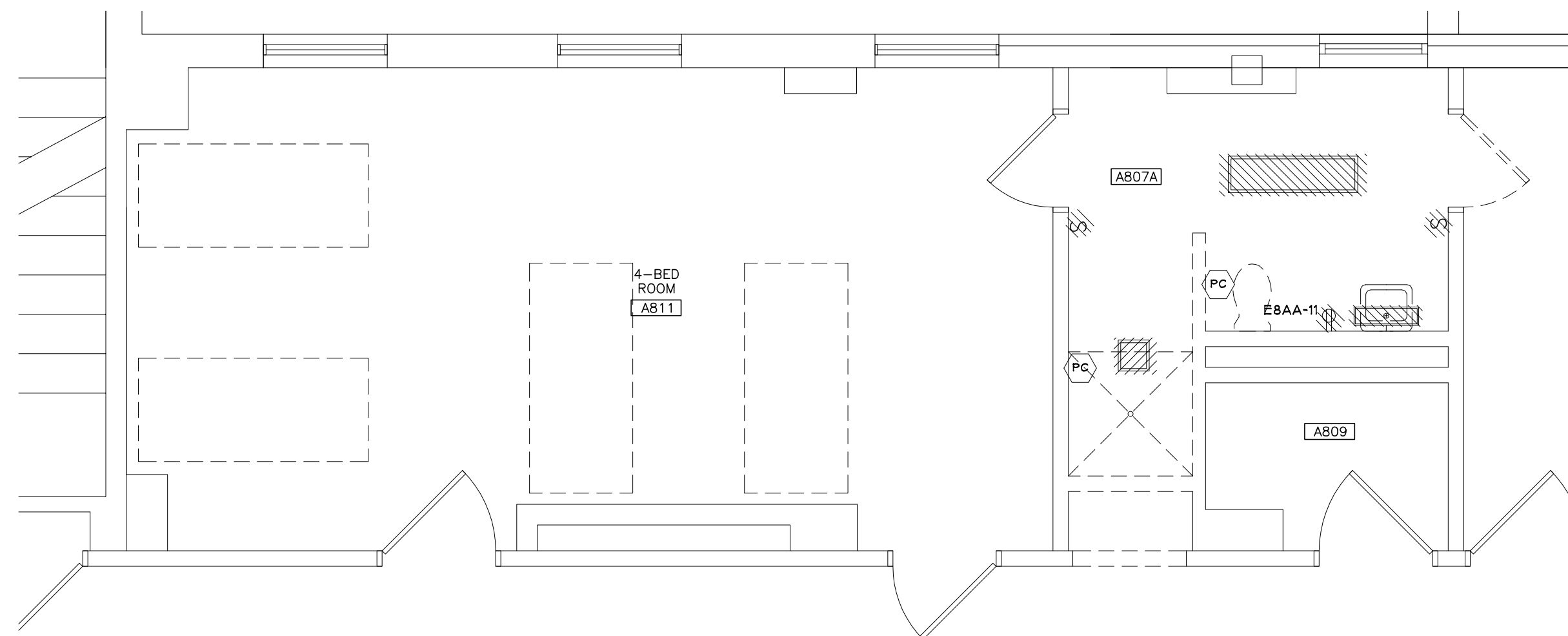
1 ELECTRICAL DEMOLITION PLAN
SCALE: 1/4" = 1'-0"



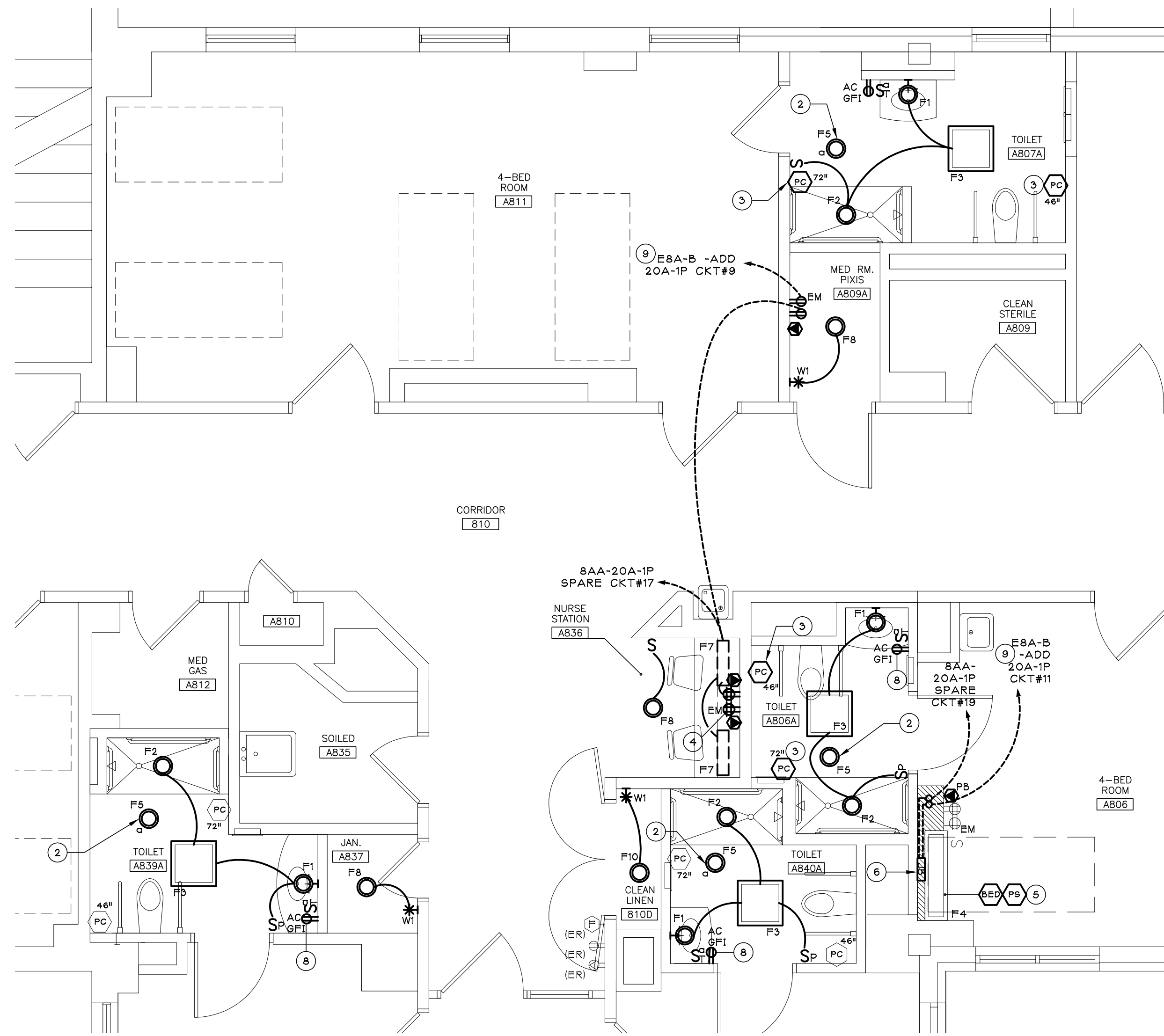
2 ELECTRICAL NEW WORK PLAN
SCALE: 1/4" = 1'-0"

- GENERAL DEMOLITION NOTES (FOR THIS DRAWING ONLY)
- UNLESS NOTED OTHERWISE, REMOVE EXISTING ELECTRICAL DEVICES, AND ASSOCIATED CIRCUITRY, LOCATED ON OR IN WALLS SCHEDULED FOR REMOVAL. REFER TO ARCHITECTURAL DRAWINGS FOR DEMOLITION COORDINATION, REUSE AND/OR RE-ESTABLISH RECEPTACLE BRANCH CIRCUITRY IN RENOVATED AREAS.
 - UNLESS NOTED OTHERWISE, REMOVE EXISTING ELECTRICAL DEVICES, LOCATED ON OR IN CEILINGS SCHEDULED FOR REMOVAL. TO MAINTAIN DRAWING CLARITY, EXISTING CEILINGS SCHEDULED FOR DEMOLITION HAVE NOT BEEN IDENTIFIED ON THIS DRAWING. REFER TO ARCHITECTURAL DRAWINGS FOR DEMOLITION COORDINATION, REUSE AND/OR RE-ESTABLISH LIGHTING BRANCH CIRCUITRY IN RENOVATED AREAS.
 - REFER TO GENERAL DEMOLITION NOTES ON DRAWING EP002 FOR ADDITIONAL ELECTRICAL DEMOLITION INFORMATION.

- KEYED DEMOLITION NOTES (FOR THIS DRAWING ONLY)
- NURSE CALL PULL CORD TO BE RELOCATED. SEE NEW WORK PLANS ON THIS SHEET FOR NEW LOCATION. (TYPICAL OF EIGHT)



3 ELECTRICAL DEMOLITION PLAN
SCALE: 1/4" = 1'-0"



4 ELECTRICAL NEW WORK PLAN
SCALE: 1/4" = 1'-0"

- GENERAL RENOVATION NOTES (FOR THIS DRAWING ONLY)
- UNLESS NOTED OTHERWISE, CONNECT LIGHTING FIXTURES TO EXISTING CIRCUITS AND NETWORK TO ACCOMMODATE NEW SWITCHED LAYOUT.
 - TO MAINTAIN DRAWING CLARITY, NEW CEILINGS HAVE NOT BEEN IDENTIFIED ON THIS DRAWING. REFER TO ARCHITECTURAL REFLECTED CEILING DRAWINGS FOR COORDINATION.
 - REFER TO GENERAL RENOVATION NOTES ON DRAWING EP002 FOR ADDITIONAL ELECTRICAL INFORMATION.

- KEYED RENOVATION NOTES (FOR THIS DRAWING ONLY)
- CIRCUIT (2) HEAT LAMPS TOGETHER TO 20A-1P SPARE BREAKER IN PANEL BAA CKT. #21; CLOSET AB10.
 - CIRCUIT (4) HEAT LAMPS TOGETHER TO 20A-1P SPARE BREAKER IN PANEL BAA CKT. 21; CLOSET AB05.
 - PROVIDE WEST CALL PULL STATION TO MATCH EXISTING. ALL OTHER SYMBOLS ON NEW WORK PLANS OF THIS SHEET ARE REINSTALLED DEVICES SAVED FROM DEMOLITION.
 - CIRCUIT TOGETHER WITH RM AB08A EM RECEPTACLE.
 - PROVIDE WEST CALL PATIENT BED STATION. MODEL: SPS-2000/EJ WITH PILLOW SPEAKER. MODEL: GEN4.
 - REFER TO TYPICAL PATIENT HEADWALL DETAIL ON DWG. EP501.
 - RECONNECT TO EXISTING LOCAL EM RECEPTACLE CIRCUIT SAVED FROM DEMOLITION.
 - RECONNECT TO EXISTING LOCAL NP RECEPTACLE CIRCUIT SAVED FROM DEMOLITION.
 - MAKE: SQUARE-D, TYPE: QOD 22KAIC.

Note:
USERS OF THESE DRAWINGS
ARE RESPONSIBLE FOR VERIFYING ALL
EXISTING DIMENSIONS & CONDITIONS
IN THE FIELD.

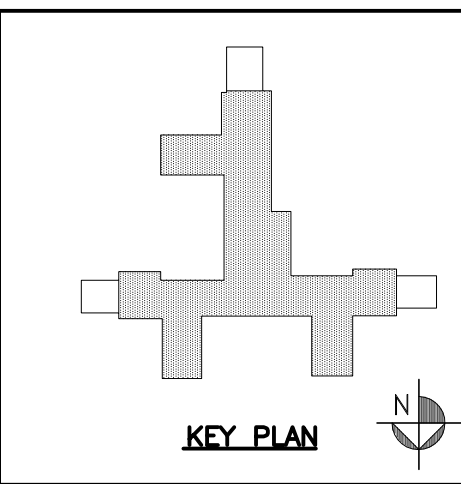
Revisions	Date

CONSULTANTS:

IPD: Engineering
INTEGRATED PROJECT DELIVERY

ONE WEBSTER'S LANDING
SYRACUSE, NEW YORK 13202
315.423.0185

SEAL: J. CORNELIUS
REGISTERED PROFESSIONAL ENGINEER
NO. 085524
STATE OF NEW YORK



ARCHITECT:

GARDNER PLUS
ARCHITECTS, PLLC

40 Wildbriar Road, Rochester NY 14623
585-321-1210 www.gardnerplus.com

Drawing Title

PARTIAL 8TH FLOOR
ELECTRICAL PLANS

Project Title

VA SYRACUSE 8TH FLOOR
COMMUNITY LIVING CENTER
BATHROOM RENOVATIONS

Location

800 Irving Avenue Syracuse, NY 13210

Date

03-08-13

Checked

SBG

Drawn

NFR

Project Number

VAMC-528A7-12-718

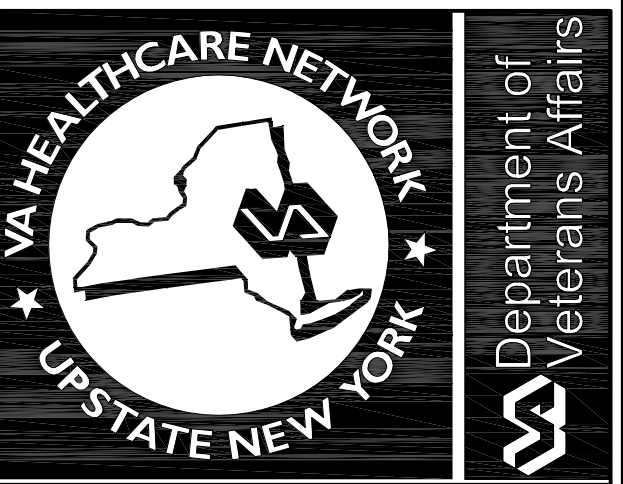
Building Number

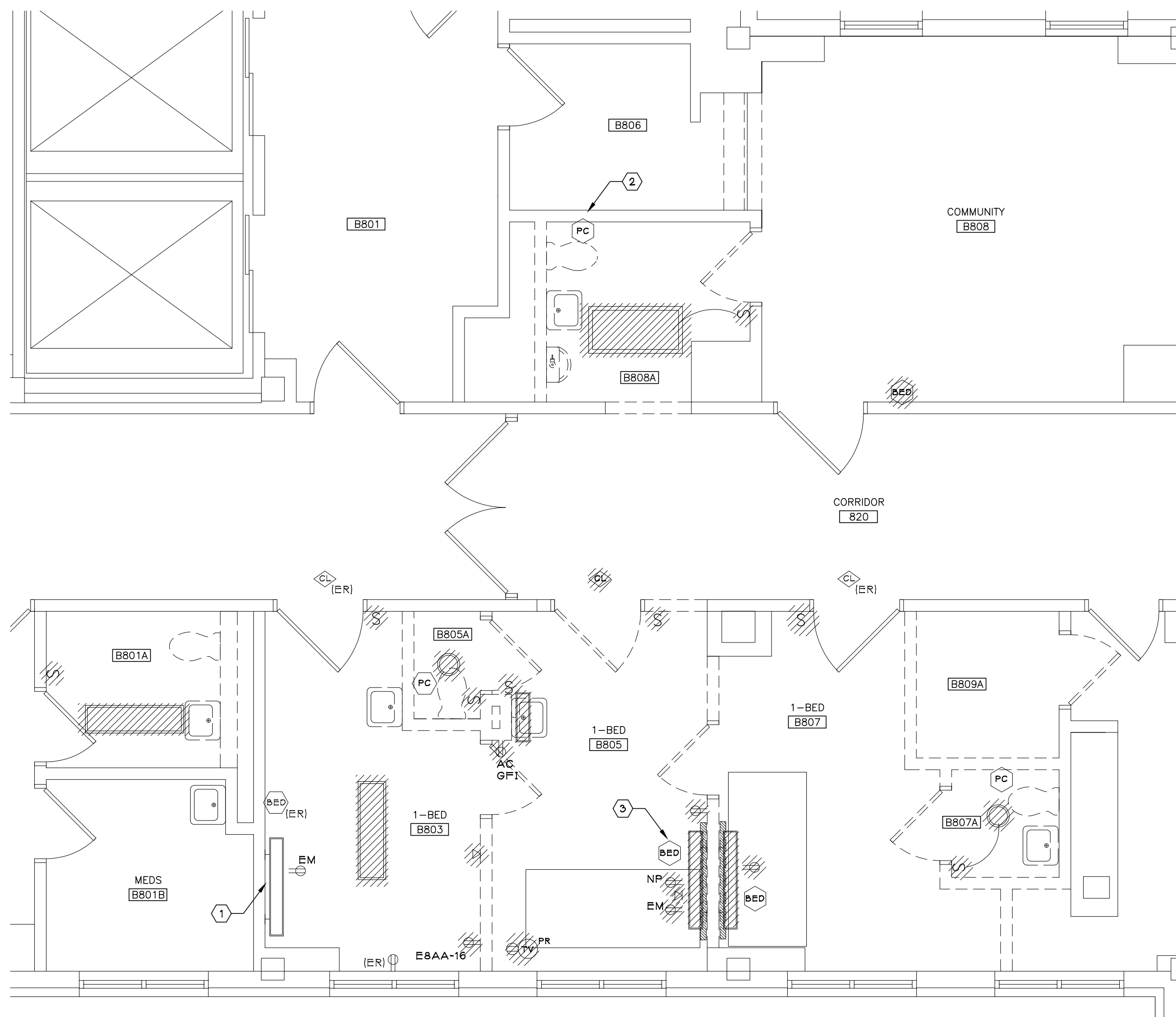
01

Drawing Number

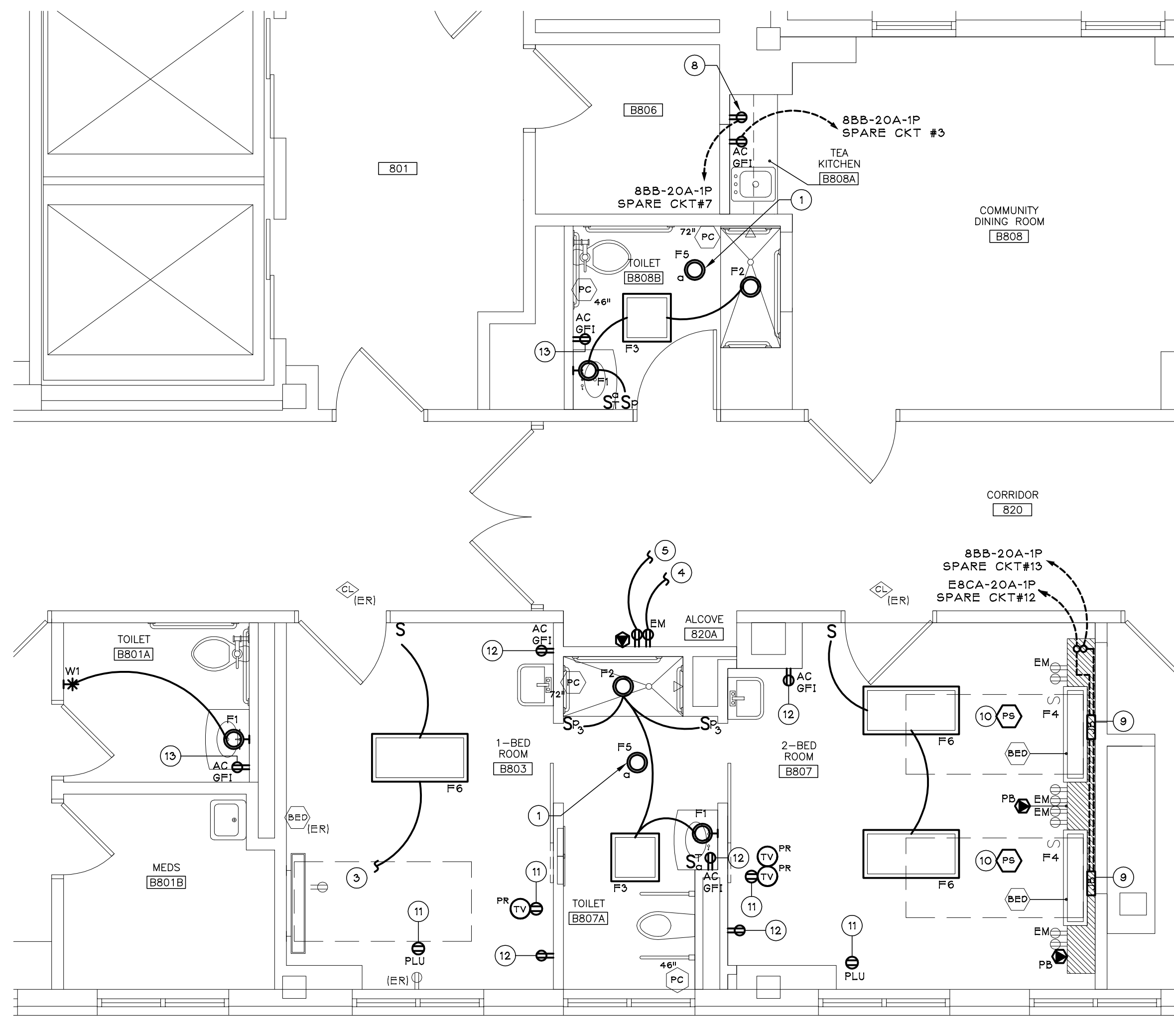
VAMC-528A7-12-718
EP102

Dwg. 58 of 62





1 ELECTRICAL DEMOLITION PLAN
SCALE: 1/4" = 1'-0"



2 ELECTRICAL NEW WORK PLAN
SCALE: 1/4" = 1'-0"

GENERAL DEMOLITION NOTES FOR THIS DRAWING ONLY:

A. UNLESS NOTED OTHERWISE, REMOVE EXISTING ELECTRICAL DEVICES, AND ASSOCIATED CIRCUITRY, LOCATED ON OR IN WALLS SCHEDULED FOR REMOVAL. REFER TO ARCHITECTURAL DRAWINGS FOR DEMOLITION COORDINATION, REUSE AND/OR RE-ESTABLISH RECEPTACLE BRANCH CIRCUITRY IN RENOVATED AREAS.

B. UNLESS NOTED OTHERWISE, REMOVE EXISTING ELECTRICAL DEVICES, LOCATED ON OR IN CEILINGS SCHEDULED FOR REMOVAL. TO MAINTAIN DRAWING CLARITY, EXISTING CEILINGS SCHEDULED FOR DEMOLITION HAVE NOT BEEN IDENTIFIED ON THIS DRAWING. REFER TO ARCHITECTURAL DRAWINGS FOR DEMOLITION COORDINATION, REUSE AND/OR RE-ESTABLISH LIGHTING BRANCH CIRCUITRY IN RENOVATED AREAS.

C. REFER TO GENERAL DEMOLITION NOTES ON DRAWING EPO02 FOR ADDITIONAL ELECTRICAL DEMOLITION INFORMATION.

D. REMOVE TWO (2) 15A-3P BREAKERS FROM PANEL 8CA; IN CLOSET C831. SCHEDULE DATE AND TIME OF WORK WITH VA COR PRIOR TO PANEL SHUTDOWN. BREAKERS ARE LOCATED IN POLES (2123,28) & (2728,31). TURN REMOVED BREAKERS OVER TO VA COR.

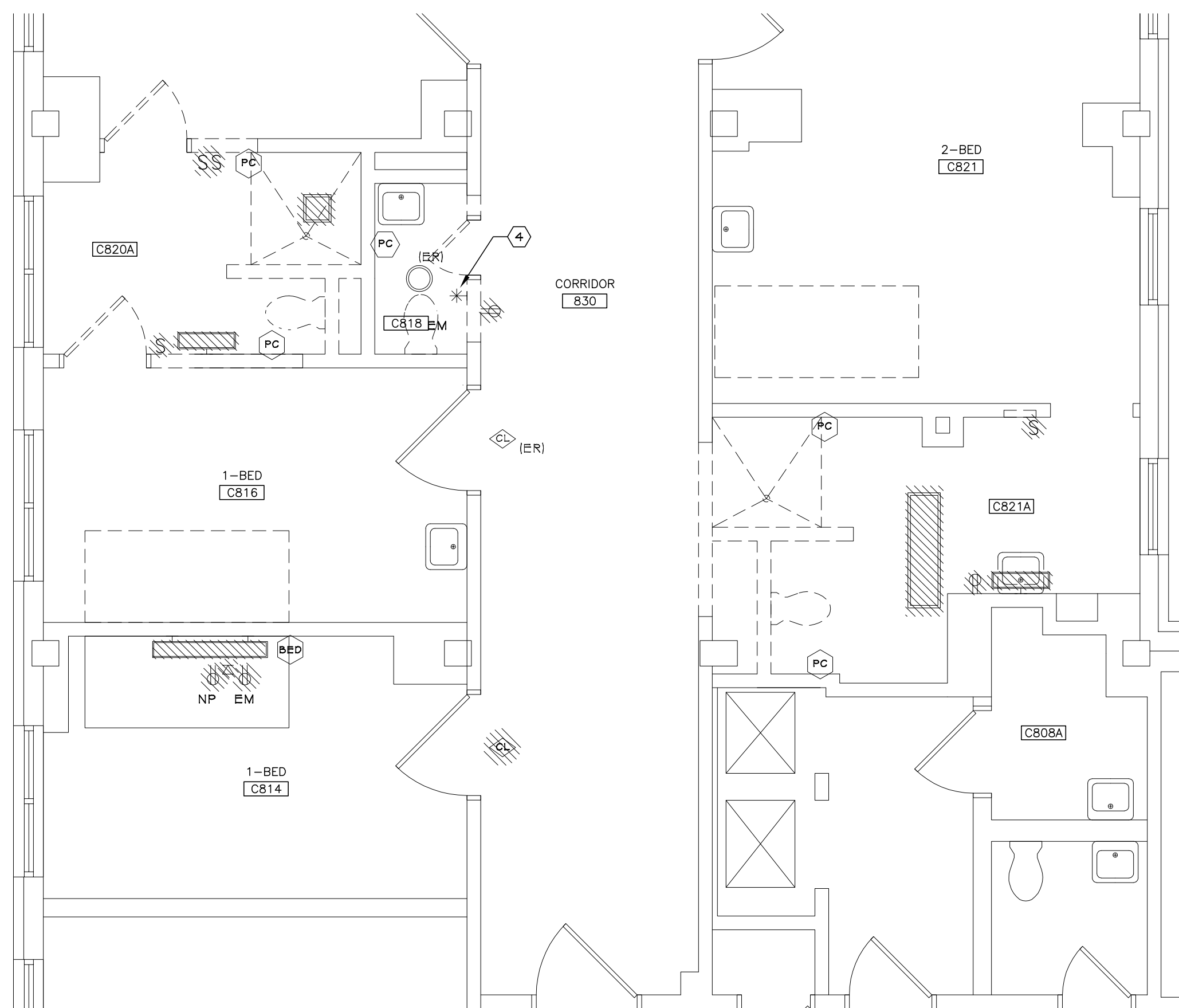
KEYED DEMOLITION NOTES FOR THIS DRAWING ONLY:

1 HEAD WALL RECEPTABLES AND PATIENT BED FIXTURES TO REMAIN.

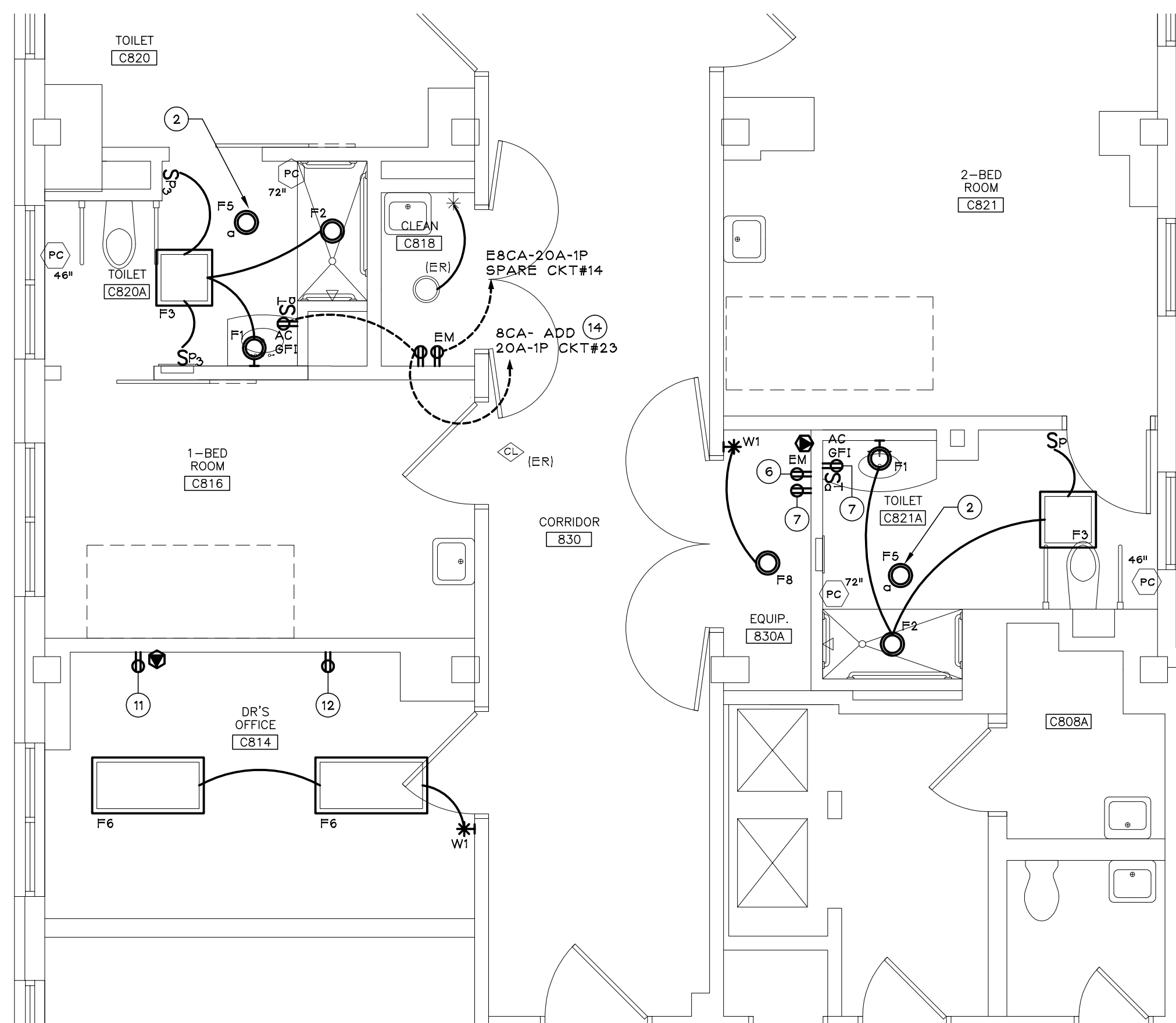
2 NURSE CALL PULL CORD TO BE RELOCATED. SEE NEW WORK PLANS FOR NEW LOCATION. (TYPICAL OF EIGHT)

3 NURSE CALL BED STATION TO BE RELOCATED. SEE RM B807 ON NEW WORK PLAN FOR NEW LOCATION. (TYPICAL OF TWO)

4 WALL MOUNTED OCCUPANCY SENSOR TO BE RELOCATED. SEE RM C816 FOR NEW LOCATION.



3 ELECTRICAL DEMOLITION PLAN
SCALE: 1/4" = 1'-0"



4 ELECTRICAL NEW WORK PLAN
SCALE: 1/4" = 1'-0"

GENERAL RENOVATION NOTES FOR THIS DRAWING ONLY:

A. UNLESS NOTED OTHERWISE, CONNECT LIGHTING FIXTURES TO EXISTING LIGHTING CIRCUITS AND REWORK TO ACCOMMODATE NEW SWITCHED LAYOUT.

B. TO MAINTAIN DRAWING CLARITY, NEW CEILINGS HAVE NOT BEEN IDENTIFIED ON THIS DRAWING. REFER TO ARCHITECTURAL REFLECTED CEILING DRAWINGS FOR COORDINATION.

C. REFER TO GENERAL RENOVATION NOTES ON DRAWING EPO02 FOR ADDITIONAL ELECTRICAL INFORMATION.

KEYED RENOVATION NOTES FOR THIS DRAWING ONLY:

1 CIRCUIT (2) HEAT LAMPS TOGETHER TO 20A-1P SPARE BREAKER IN PANEL 8B5 CKT. #1; CLOSET B813.

2 CIRCUIT (4) HEAT LAMPS TOGETHER TO 20A-1P BREAKER PROVIDED IN PANEL 8CA CKT. #21; CLOSET C831; MAKE: SQUARE-D, TYPE QOB 22KAIC.

3 SWITCH TOGETHER WITH EXISTING PATIENT BED FIXTURE.

4 CIRCUIT TOGETHER WITH RM B807 EMERGENCY POWER HEADWALL.

5 CIRCUIT TOGETHER WITH RM B807 NORMAL POWER HEADWALL.

6 CIRCUIT TOGETHER WITH RM C818 EMERGENCY RECEPTACLE.

7 CIRCUIT TOGETHER WITH RM C818 NORMAL POWER RECEPTACLE.

8 REFER TO ARCHITECTURAL ELEVATIONS FOR MICROWAVE RECEPTACLE MOUNTING HEIGHT.

9 REFER TO TYPICAL PATIENT HEADWALL DETAIL ON DWS. SP601.

10 PROVIDE WEST CALL PILLOW SPEAKER MODEL: GEN4.

11 RECONNECT TO EXISTING LOCAL EM RECEPTACLE CIRCUIT SAVED FROM DEMOLITION.

12 RECONNECT TO EXISTING LOCAL NP RECEPTACLE CIRCUIT SAVED FROM DEMOLITION.

13 CIRCUIT TOGETHER WITH KITCHEN B808A NP RECEPTACLE.

14 MAKE: SQUARE-D, TYPE: QOB 22KAIC.

Note:
USERS OF THESE DRAWINGS
ARE RESPONSIBLE FOR VERIFYING ALL
EXISTING DIMENSIONS & CONDITIONS
IN THE FIELD.

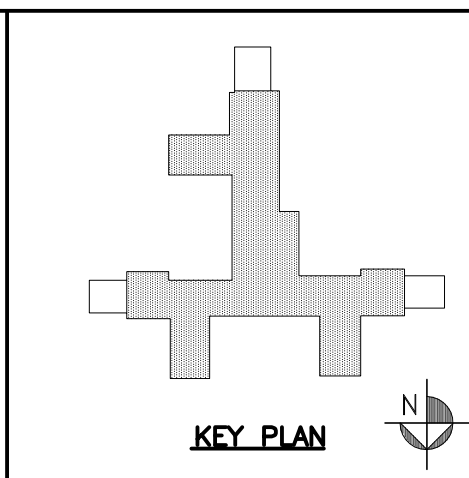
Revisions	Date

CONSULTANTS:

IPD: Engineering
INTEGRATED PROJECT DELIVERY

ONE WEBSTER'S LANDING
SYRACUSE, NEW YORK 13202
315.423.0185

SEAL: SAMUEL J. COLEMAN
REGISTERED PROFESSIONAL ENGINEER
NO. 08552
STATE OF NEW YORK

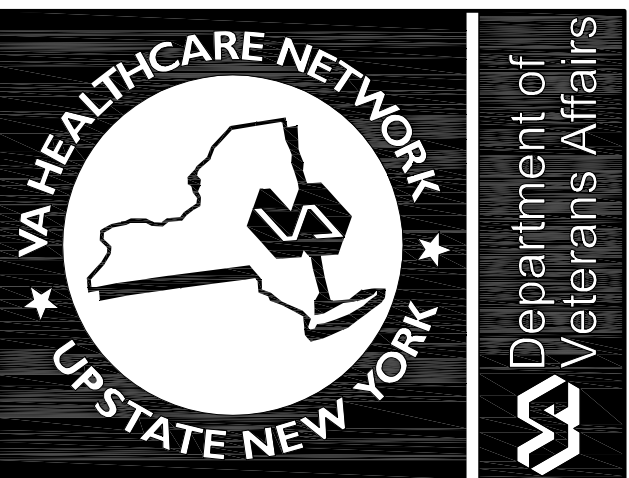


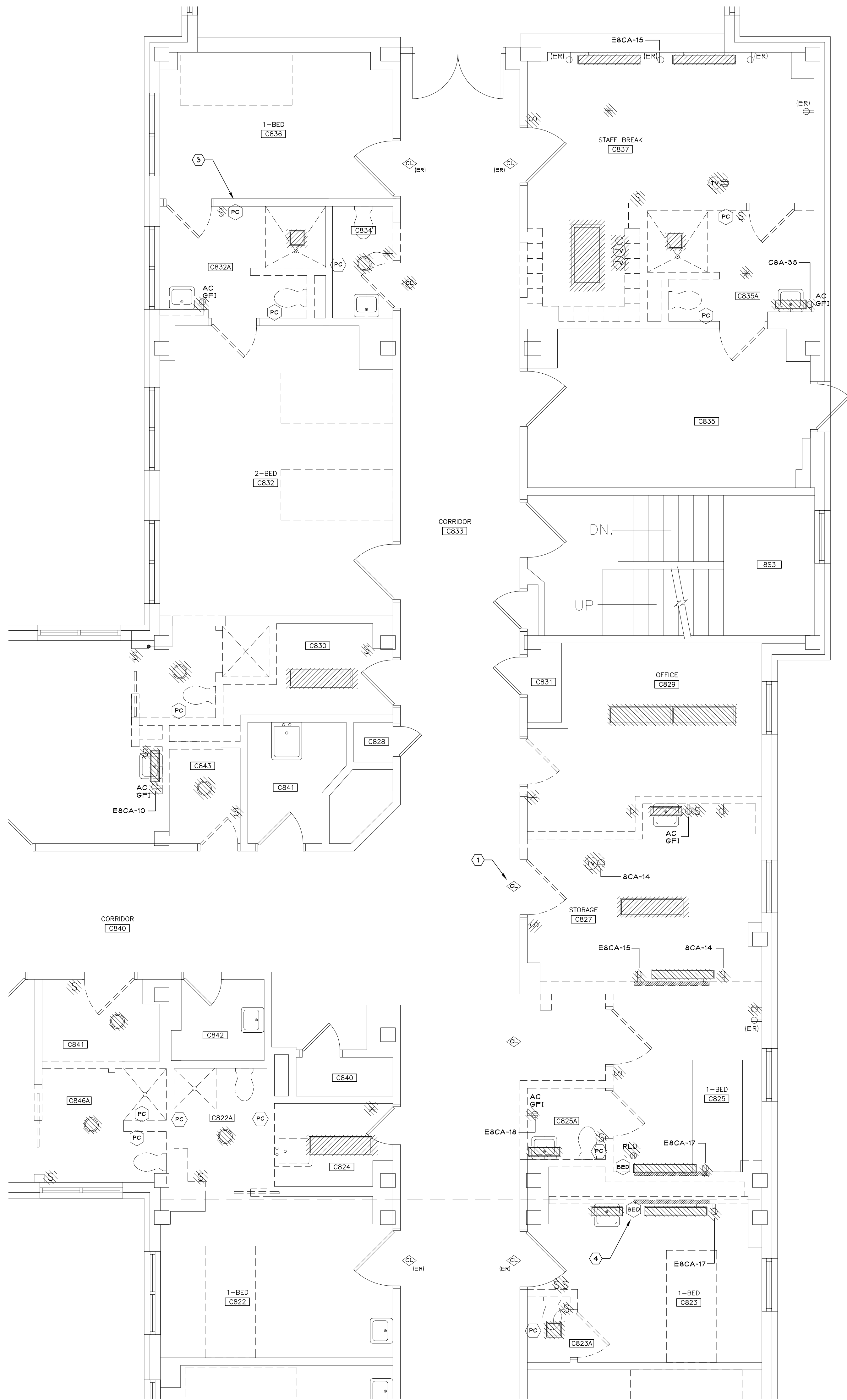
ARCHITECT:

GARDNER PLUS
ARCHITECTS, PLLC
40 Wildbriar Road, Rochester NY 14623
585-321-1210 www.gardnerplus.com

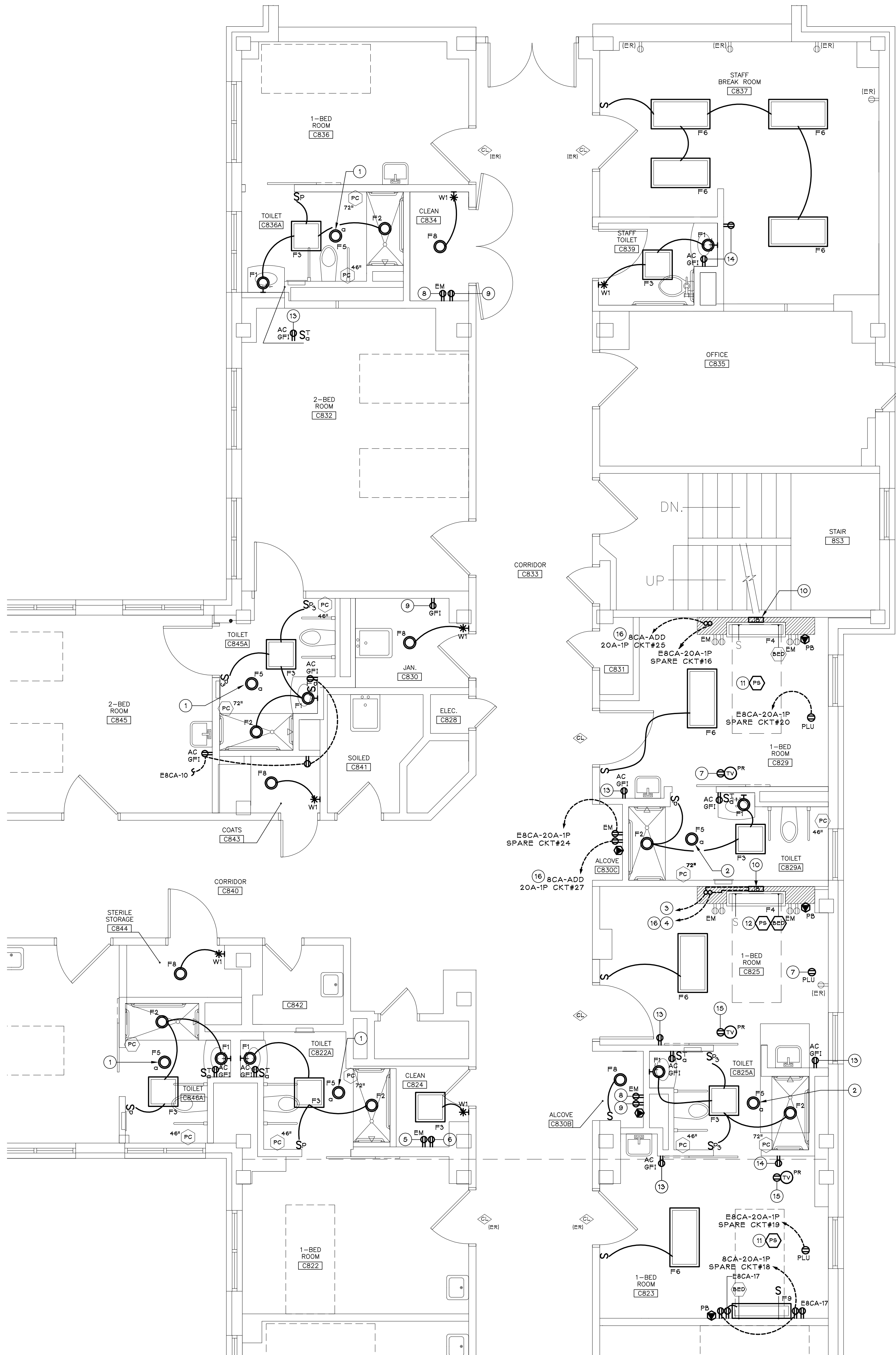
Drawing Title	PARTIAL 8TH FLOOR ELECTRICAL PLANS
Project Title	VA SYRACUSE 8TH FLOOR COMMUNITY LIVING CENTER BATHROOM RENOVATIONS
Location	800 Irving Avenue Syracuse, NY 13210
Date	03-08-13
Checked	SBG
Drawn	NFR

Project Number	VAMC-528A7-12-718
Building Number	01
Drawing Number	EP103
Dwg. 59 of	62





1 ELECTRICAL DEMOLITION PLAN
SCALE: 1/4" = 1'-0"



2 ELECTRICAL NEW WORK PLAN
SCALE: 1/4" = 1'-0"

GENERAL DEMOLITION NOTES (FOR THIS DRAWING ONLY)

A. UNLESS NOTED OTHERWISE, REMOVE EXISTING ELECTRICAL DEVICES, AND ASSOCIATED CIRCUITRY, LOCATED ON OR IN WALLS SCHEDULED FOR REMOVAL. REFER TO ARCHITECTURAL DRAWINGS FOR DEMOLITION COORDINATION. REUSE AND/OR RE-ESTABLISH RECEPTACLE BRANCH CIRCUITRY IN RENOVATED AREAS.

B. UNLESS NOTED OTHERWISE, REMOVE EXISTING ELECTRICAL DEVICES, LOCATED ON OR IN CEILINGS SCHEDULED FOR REMOVAL. TO MAINTAIN DRAWING CLARITY, EXISTING CEILINGS SCHEDULED FOR DEMOLITION HAVE NOT BEEN IDENTIFIED ON THIS DRAWING. REFER TO ARCHITECTURAL DRAWINGS FOR DEMOLITION COORDINATION. REUSE AND/OR RE-ESTABLISH LIGHTING BRANCH CIRCUITRY IN RENOVATED AREAS.

C. REFER TO GENERAL DEMOLITION NOTES ON DRAWING EP002 FOR ADDITIONAL ELECTRICAL DEMOLITION INFORMATION.

KEYED DEMOLITION NOTES (FOR THIS DRAWING ONLY)

1 EXISTING CORRIDOR NURSE CALL DOME LIGHT TO BE RELOCATED. (TYPICAL OF TWO)

2 NOT USED.

3 NURSE CALL PULL CORD TO BE REMOVED AND STORED FOR REINSTALLATION. (TYPICAL OF ALL SYMBOLS)

4 NURSE CALL BED STATION TO BE REMOVED AND STORED FOR REINSTALLATION. (TYPICAL OF ALL SYMBOLS)

GENERAL RENOVATION NOTES (FOR THIS DRAWING ONLY)

A. UNLESS NOTED OTHERWISE, CONNECT LIGHTING FIXTURES TO EXISTING LIGHTING CIRCUITS AND REWORK TO ACCOMMODATE NEW SWITCHED LAYOUT.

B. TO MAINTAIN DRAWING CLARITY, NEW CEILINGS HAVE NOT BEEN IDENTIFIED ON THIS DRAWING. REFER TO ARCHITECTURAL REFLECTED CEILING DRAWINGS FOR COORDINATION.

C. REFER TO GENERAL RENOVATION NOTES ON DRAWING EP002 FOR ADDITIONAL ELECTRICAL INFORMATION.

KEYED RENOVATION NOTES (FOR THIS DRAWING ONLY)

1 CIRCUIT (4) HEAT LAMPS TOGETHER TO 20A-1P SPARE BREAKER IN PANEL SCA CKT. #16, CLOSET C831.

2 SEE DWG. 4/ EP103 FOR CIRCUIT CONTINUATION.

3 E8CA- 20A-1P SPARE CKT. #21.

4 8CA- ADD 20A-1P CKT. #29.

5 CIRCUIT TOGETHER WITH RM C818 EM RECEPTACLE.

6 CIRCUIT TOGETHER WITH RM C818 NP RECEPTACLE.

7 CIRCUIT TOGETHER WITH RM C829 NP RECEPTACLE.

8 CIRCUIT TOGETHER WITH RM C830C EM RECEPTACLE.

9 CIRCUIT TOGETHER WITH RM C830C NP RECEPTACLE.

10 REFER TO TYPICAL PATIENT HEADWALL DETAIL ON DWG. EP501.

11 PROVIDE WEST CALL PILLOW SPEAKER, MODEL: GEN4.

12 PROVIDE WEST CALL PATIENT BED STATION, MODEL: SP5-2000/EJ WITH PILLOW SPEAKER, MODEL: GEN4.

13 RECONNECT TO EXISTING LOCAL EM RECEPTACLE CIRCUIT SAVED FROM DEMOLITION.

14 RECONNECT TO EXISTING LOCAL NP RECEPTACLE CIRCUIT SAVED FROM DEMOLITION.

15 CIRCUIT TOGETHER WITH RM C823 'PLU' RECEPTACLE.

16 MAKE: SQUARE-D, TYPE: QOB 22KALC.

Note:
USERS OF THESE DRAWINGS
ARE RESPONSIBLE FOR VERIFYING ALL
EXISTING DIMENSIONS & CONDITIONS
IN THE FIELD.

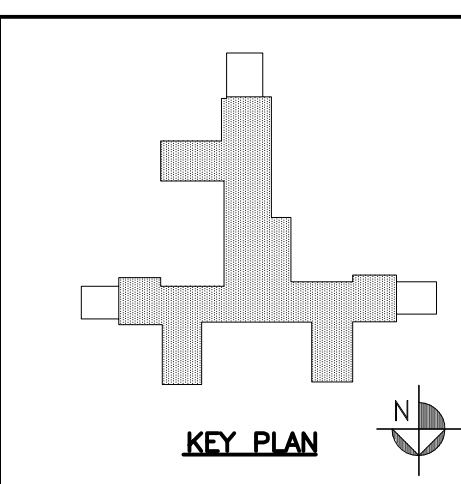
Revisions	Date

CONSULTANTS:

IPD: Engineering
INTEGRATED PROJECT DELIVERY

ONE WEBSTER'S LANDING
SYRACUSE, NEW YORK 13202
315.423.0185

Professional Engineer Seal: Samuel J. Corns, No. 08552, State of New York



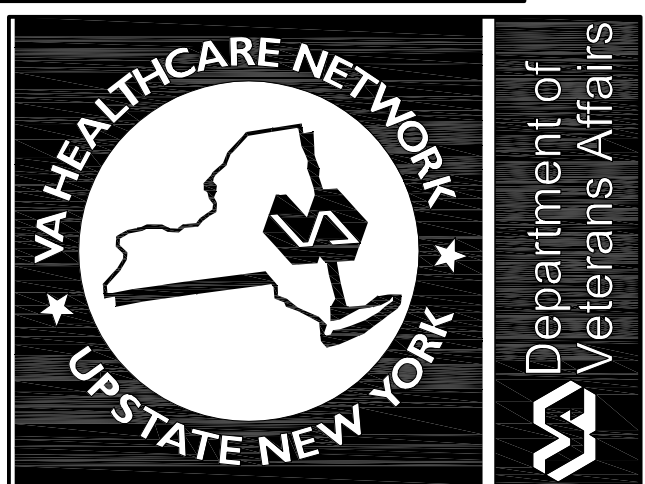
ARCHITECT:

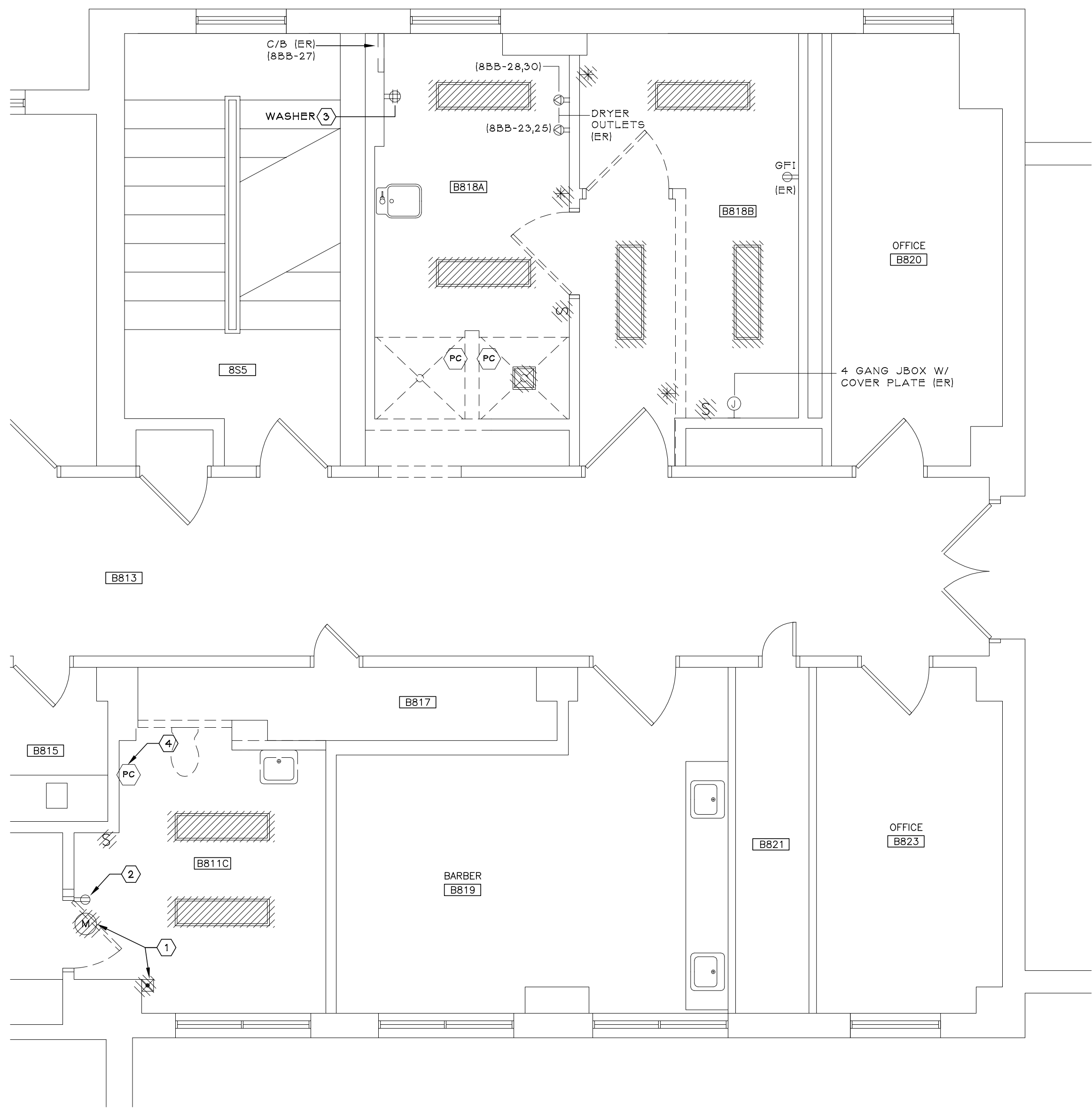
GARDNER PLUS
ARCHITECTS, PLLC
40 Wildbriar Road, Rochester NY 14623
585-321-1210 www.gardnerplus.com

Drawing Title	PARTIAL 8TH FLOOR ELECTRICAL PLANS
Location	800 Irving Avenue Syracuse, NY 13210
Date	03-08-13
Checked	SBG
Drawn	NFR

Project Title	VA SYRACUSE 8TH FLOOR COMMUNITY LIVING CENTER BATHROOM RENOVATIONS
Location	800 Irving Avenue Syracuse, NY 13210
Date	03-08-13
Checked	SBG
Drawn	NFR

Project Number	VAMC-528A7-12-718
Building Number	01
Drawing Number	EP104
Dwg. 60 of	62





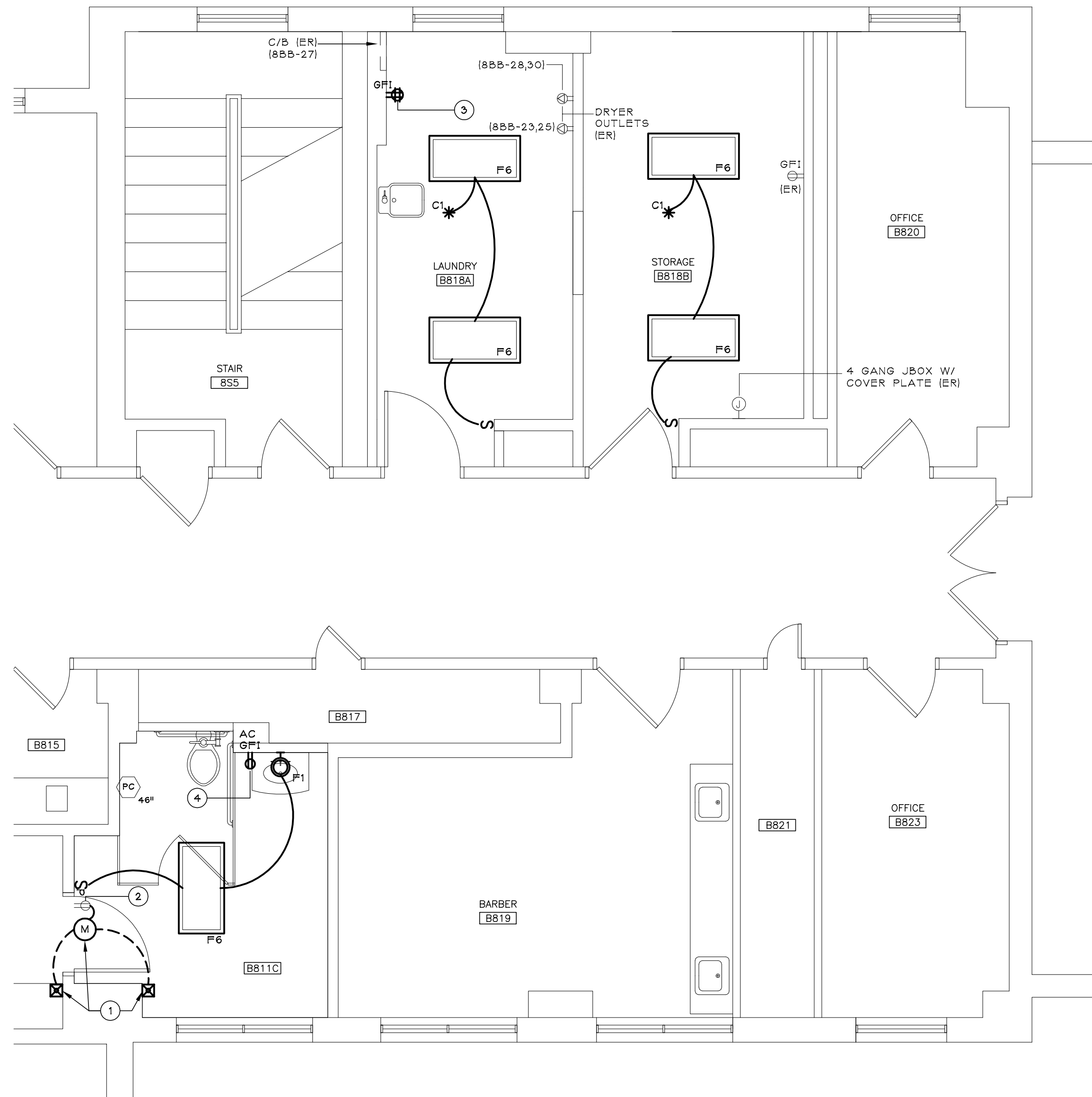
1 ELECTRICAL DEMOLITION PLAN
SCALE: 1/4" = 1'-0"

GENERAL DEMOLITION NOTES (FOR THIS DRAWING ONLY)

- A. UNLESS NOTED OTHERWISE, REMOVE EXISTING ELECTRICAL DEVICES AND ASSOCIATED CIRCUITRY, LOCATED ON OR IN WALLS SCHEDULED FOR REMOVAL. REFER TO ARCHITECTURAL DRAWINGS FOR DEMOLITION COORDINATION. REUSE AND/OR RE-ESTABLISH RECEPTACLE BRANCH CIRCUITRY IN RENOVATED AREAS.
- B. UNLESS NOTED OTHERWISE, REMOVE EXISTING ELECTRICAL DEVICES, LOCATED ON OR IN CEILINGS SCHEDULED FOR REMOVAL. TO MAINTAIN DRAWING CLARITY, EXISTING CEILINGS SCHEDULED FOR DEMOLITION HAVE NOT BEEN IDENTIFIED ON THIS DRAWING. REFER TO ARCHITECTURAL DRAWINGS FOR DEMOLITION COORDINATION. REUSE AND/OR RE-ESTABLISH LIGHTING BRANCH CIRCUITRY IN RENOVATED AREAS.
- C. REFER TO GENERAL DEMOLITION NOTES ON DRAWING EP002 FOR ADDITIONAL ELECTRICAL DEMOLITION INFORMATION.

KEYED DEMOLITION NOTES (FOR THIS DRAWING ONLY)

- ① REMOVE AUTOMATIC DOOR OPENER AND ASSOCIATED APPURTENANCES.
- ② REMOVE ABOVE DOOR OUTLET FOR DOOR OPENER STORE FOR REUSE AS SHOWN ON DETAIL 2 OF THIS SHEET. CIRCUIT REMAINS.
- ③ REMOVE QUADRAPLEX RECEPTACLE. EXISTING WIRING AND CIRCUIT REMAINS.
- ④ NURSE CALL PULL CORD TO BE REMOVED AND STORED FOR REINSTALLATION.



2 ELECTRICAL NEW WORK PLAN
SCALE: 1/4" = 1'-0"

GENERAL RENOVATION NOTES (FOR THIS DRAWING ONLY)

- A. UNLESS NOTED OTHERWISE, CONNECT LIGHTING FIXTURES TO EXISTING CIRCUITS AND REWORK TO ACCOMMODATE NEW SWITCHED LAYOUT.
- B. TO MAINTAIN DRAWING CLARITY, NEW CEILINGS HAVE NOT BEEN IDENTIFIED ON THIS DRAWING. REFER TO ARCHITECTURAL REFLECTED CEILING DRAWINGS FOR COORDINATION.
- C. REFER TO GENERAL RENOVATION NOTES ON DRAWING EP002 FOR ADDITIONAL ELECTRICAL INFORMATION.

KEYED RENOVATION NOTES (FOR THIS DRAWING ONLY)

- ① DOOR OPENER AND APPURTENANCES FURNISHED AND INSTALLED BY OTHERS; WIRED BY ELECTRICAL CONTRACTOR. COORDINATE WITH OTHER TRADES.
- ② REINSTALL EXISTING OUTLET ABOVE NEW DOOR. CONNECT TO EXISTING CIRCUIT.
- ③ RECONNECT TO EXISTING CIRCUIT.
- ④ CKT. TOGETHER WITH DOOR OPENER OUTLET.

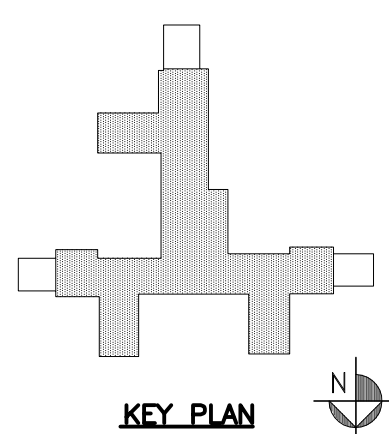
Note:
USERS OF THESE DRAWINGS
ARE RESPONSIBLE FOR VERIFYING ALL
EXISTING DIMENSIONS & CONDITIONS
IN THE FIELD.

Revisions	Date

CONSULTANTS:

IPD: Engineering
INTEGRATED PROJECT DELIVERY

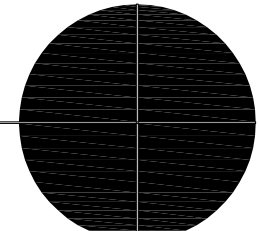
ONE WEBSTER'S LANDING
SYRACUSE, NEW YORK 13202
315.423.0185



ARCHITECT:

GARDNER PLUS
ARCHITECTS, PLLC

40 Wildbriar Road, Rochester NY 14623
585-321-1210 www.gardnerplus.com



Drawing Title
PARTIAL 8TH FLOOR
ELECTRICAL PLANS

Project Title
VA SYRACUSE 8TH FLOOR
COMMUNITY LIVING CENTER
BATHROOM RENOVATIONS

Location
800 Irving Avenue Syracuse, NY 13210

Date
03-08-13

Checked
SBG

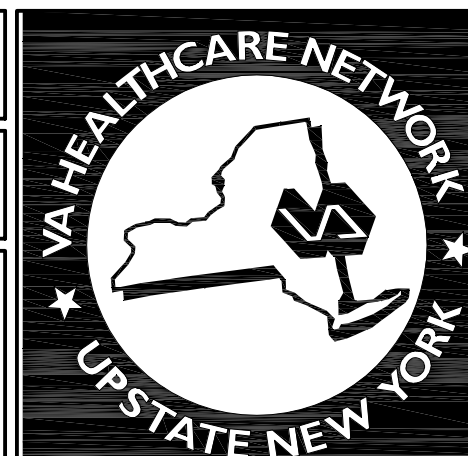
Drawn
NFR

Project Number
VAMC-528A7-12-718

Building Number
01

Drawing Number
VAMC-528A7-12-718
EP105

Dwg. 61 of 62



Department of
Veterans Affairs

