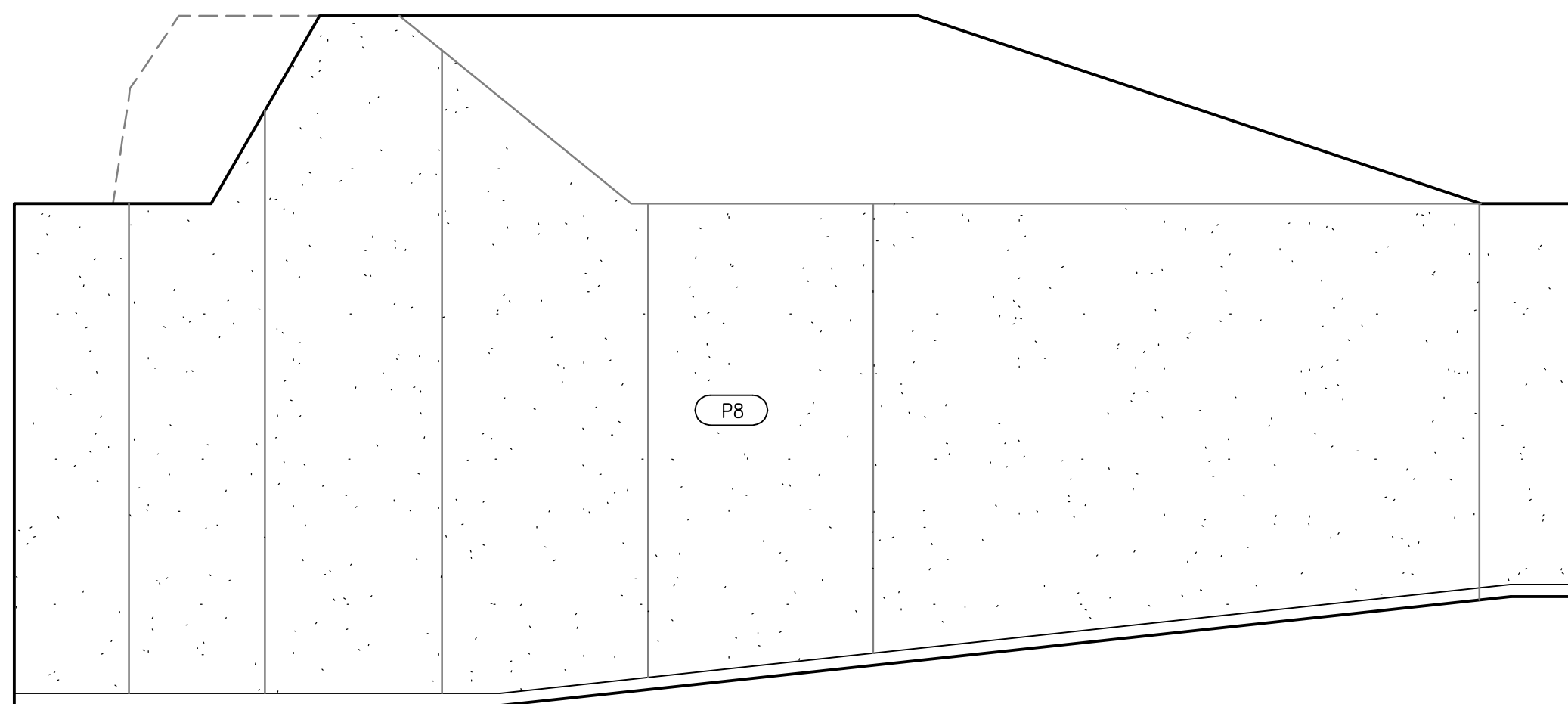


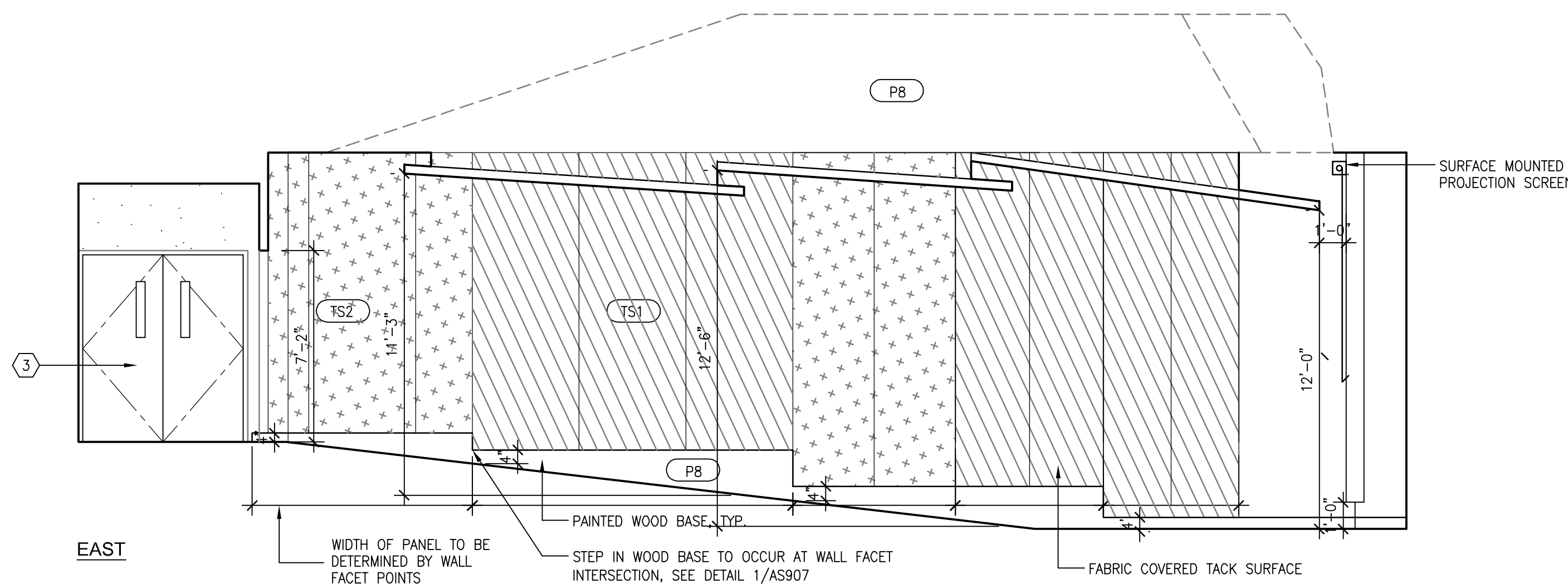
EAST

NOTE: AUDITORIUM SEATING NOT SHOWN FOR CLARITY



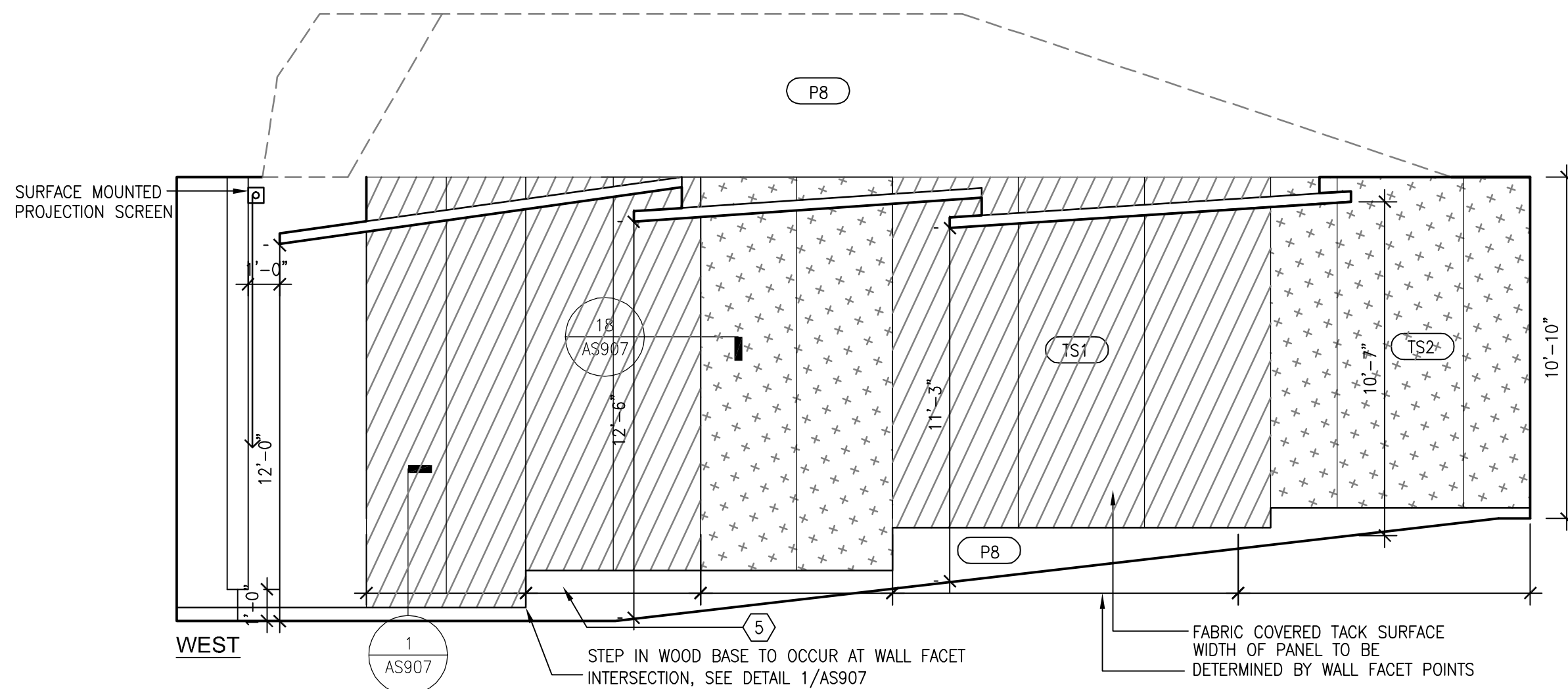
WEST

NOTE: AUDITORIUM SEATING NOT SHOWN FOR CLARITY



EAST

1/2" PLAIN SLICE MAPLE VENEER
PLYWOOD W/ CLEAR FINISH,
NATURAL COLOR



WEST

$$1/4 = 1/5$$
CONSULTANTS:

1827 E. Fir Avenue, Studio 103 / Fresno, CA 93720
T 559 322 2444 / www.hmcarchitects.com

Approved: Project Director

Location	VAMC FRESNO, CA
----------	-----------------

Drawn
CLO.

Drawing Number

AS809
Dwg. 85 of 180 Department of
Veterans Affairs