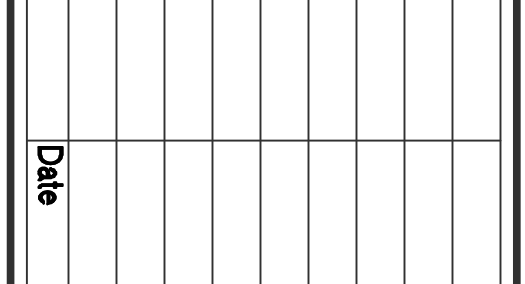
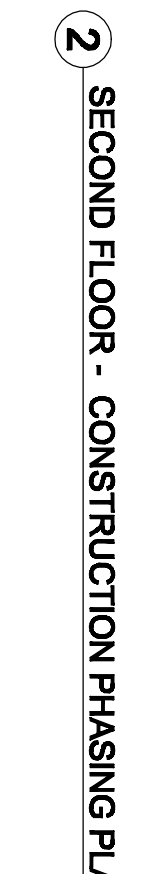
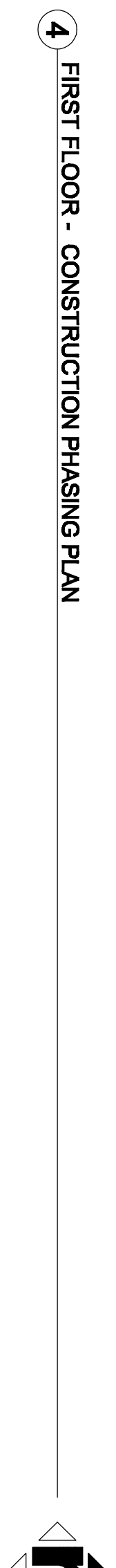
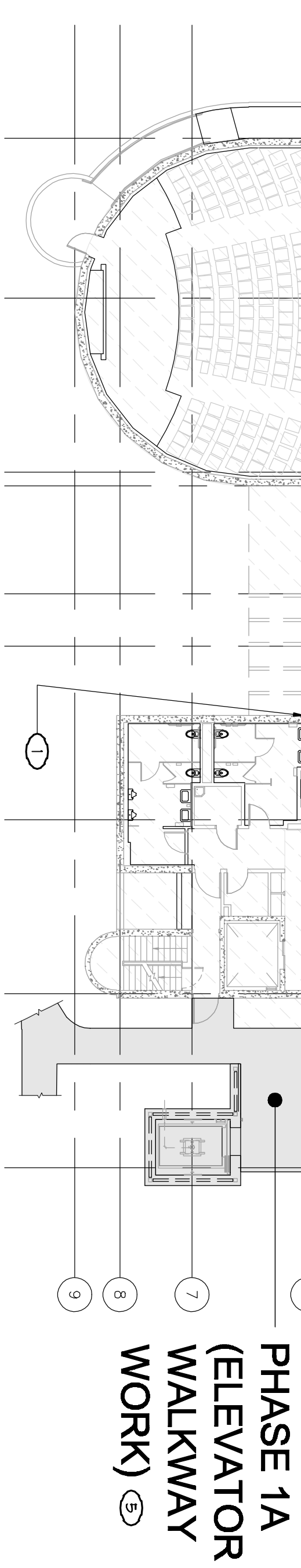
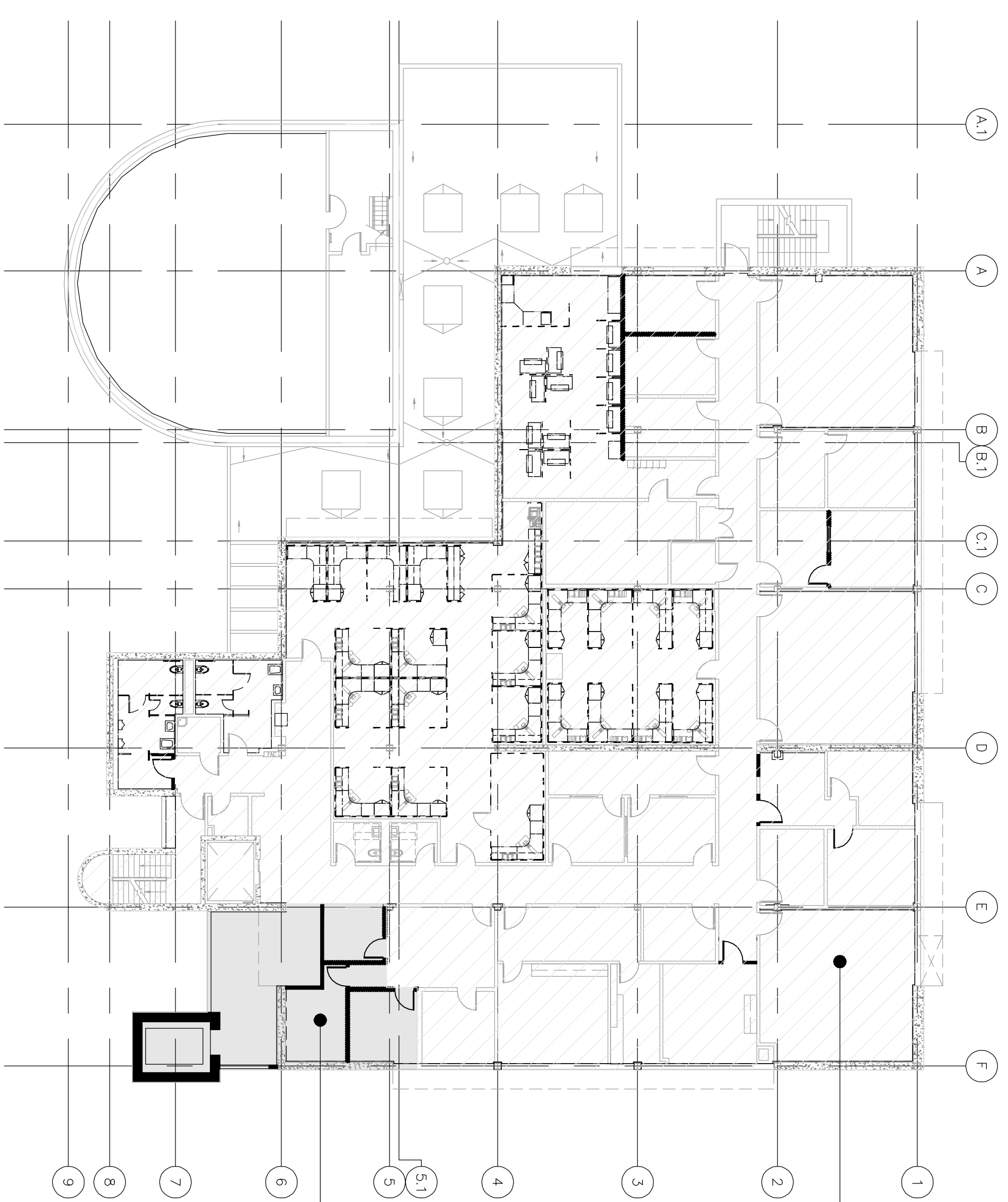
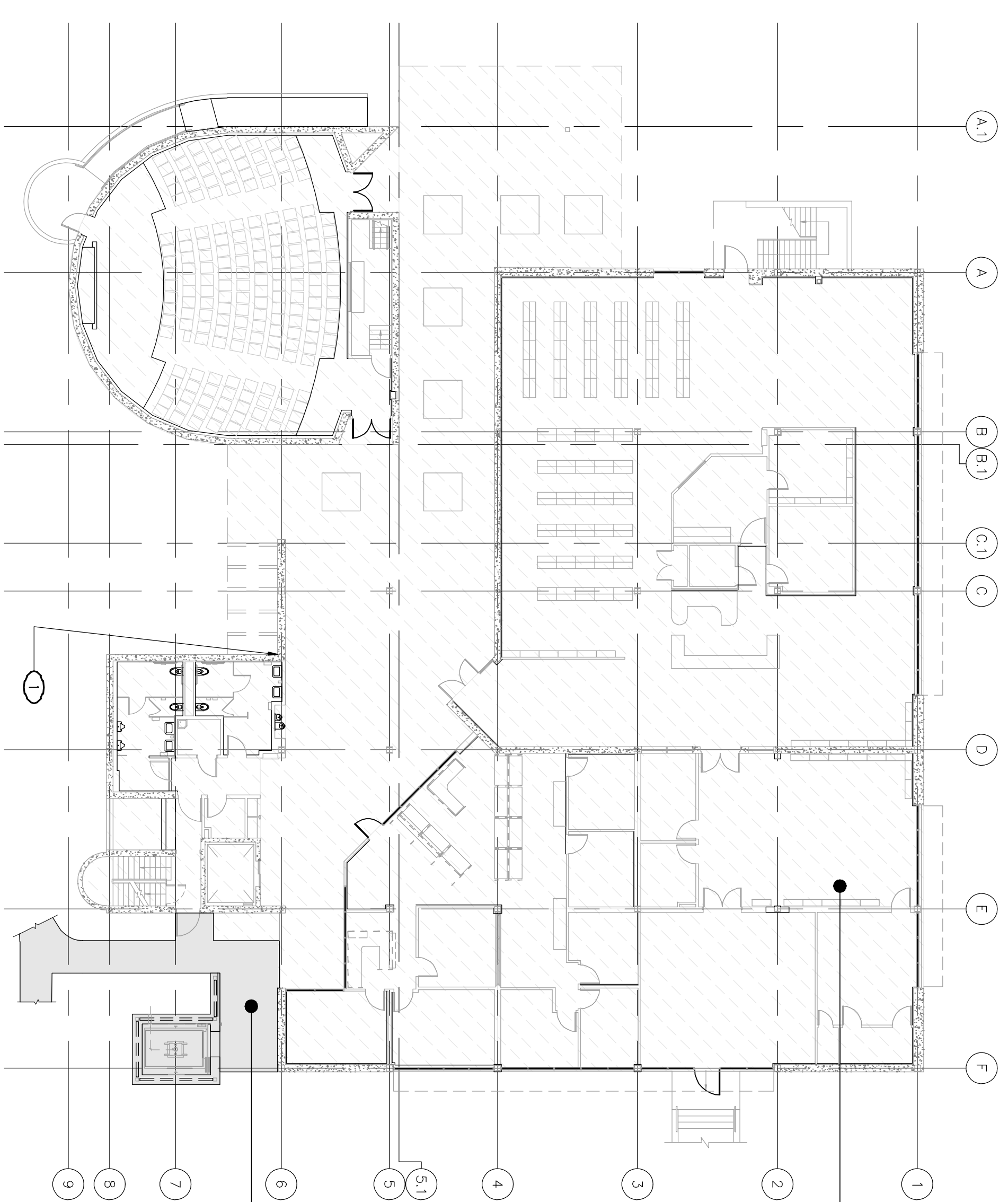
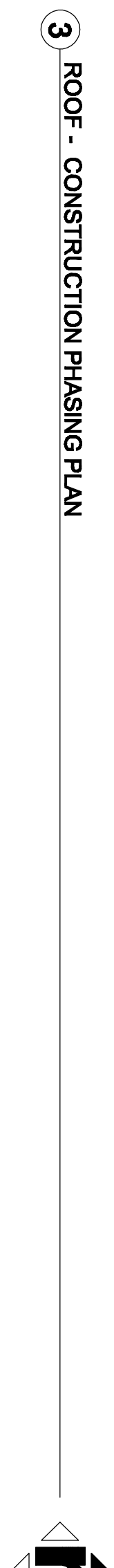
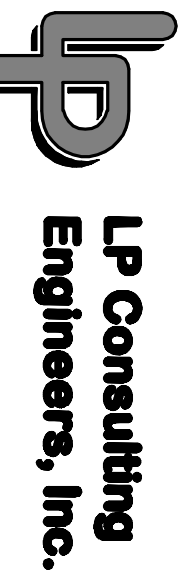


- KEY NOTES**
- |   |   |
|---|---|
| ① | SEE SHEET PFD00, KEYNOTE FOR BASEMENT WORK PHASING.       |
| ② | SEE SHEET PFD01 & PFD01 FOR THIS PHASE WORK               |
| ③ | SEE SHEET PFD02 AND PFD03 FOR THIS PHASE WORK             |
| ④ | SEE SHEET PFD03 AND PFD03 FOR THIS PHASE WORK             |
| ⑤ | NO PUMPING WORK IN THIS AREA                              |
| ⑥ | SEE SHEET PFD04, PFD05, PFD04 & PFD05 FOR THIS PHASE WORK |



**CONSULTANTS:**



ARCHITECT/ENGINEERS:

HMC Architects

1827 E. Fir Avenue, Studio 103 / Fresno, CA 93720  
T 559 322 2444 / [www.hmcarchitects.com](http://www.hmcarchitects.com)

**Drawing Title**  
**PLUMB. CONSTRUCTION PHASING PLAN**

**Project Title**  
**BUILDING 24**  
**SEISMIC CORRECTION**  
**AND ADDITION**

**Approved: Project Director**

VAMC FRESNO, CA

Date  
March 12, 2013

Check  
G.M.

Draw	
D.N	

PP002  
Dwa 104 of 180

**Office of  
Construction  
and Facilities  
Management**

