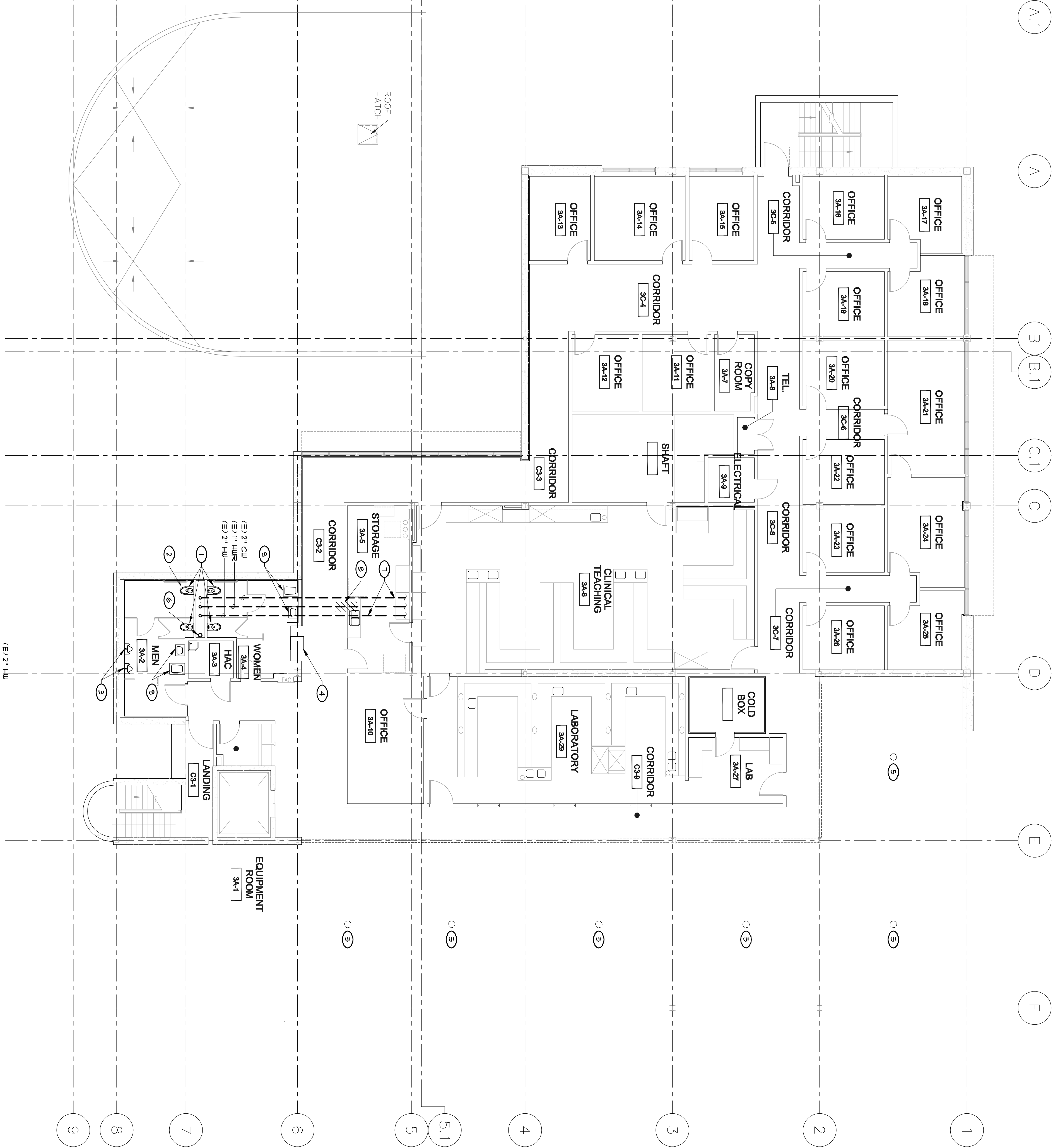
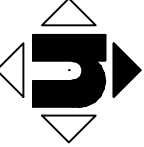


KEY NOTES

- 1 REMOVE (E) WALL MOUNT WATER CLOSET.
2 REMOVE (E) WATER CONNECTION TO WATER CLOSET FOR REROUTE TO OPPOSITE SIDE OF WATER CLOSET.
3 REMOVE (E) WALL MOUNT URINAL.
4 REMOVE (E) SINGLE HEIGHT ELECTRIC DRINKING FOUNTAIN.
5 REMOVE (E) ROOF DRAIN AND CAP (E) 3" PIPING IN ATTIC.
6 (E) 4" SOIL DRAIN IN PLUMBING CHASE AT SECOND FLOOR ATTIC.
7 (E) 2" PIPE IN THIRD FLOOR ATTIC.
8 REMOVE PORTION OF 1" HUR FOR REROUTING. SEE SHEET PD103.
9 REMOVE (E) WALL MOUNT LAVATORY.



1 THIRD FLOOR PLUMBING DEMOLITION PLAN



SCALE: 1/8" = 1'-0"

CONSULTANTS:

LP Consulting Engineers, Inc.
886 W. Ashland Ave., Suite 101, Chula, CA 92012
P: 619.425.1515
www.lpece.com
John R. 10/10/09



ARCHITECT/ENGINEERS:

HMC Architects
1827 E. Pi Avenue, Suite 103, Fresno, CA 93720
T: 559.322.2444 / www.hmcarchitects.com

Office of Construction and Facilities Management
Department of Veterans Affairs

Drawing Title
THIRD FLOOR PLUMBING DEMOLITION PLAN

Project Title
BUILDING 24
SEISMIC CORRECTION AND ADDITION

Project Number
570-215
Building Number
24

Approved Project Director

Location
VAMC FRESNO, CA

Date
March 12, 2013

Checked
KK

Drawn
DN

Drawing Number
PD103

Dwg. 107 of 180