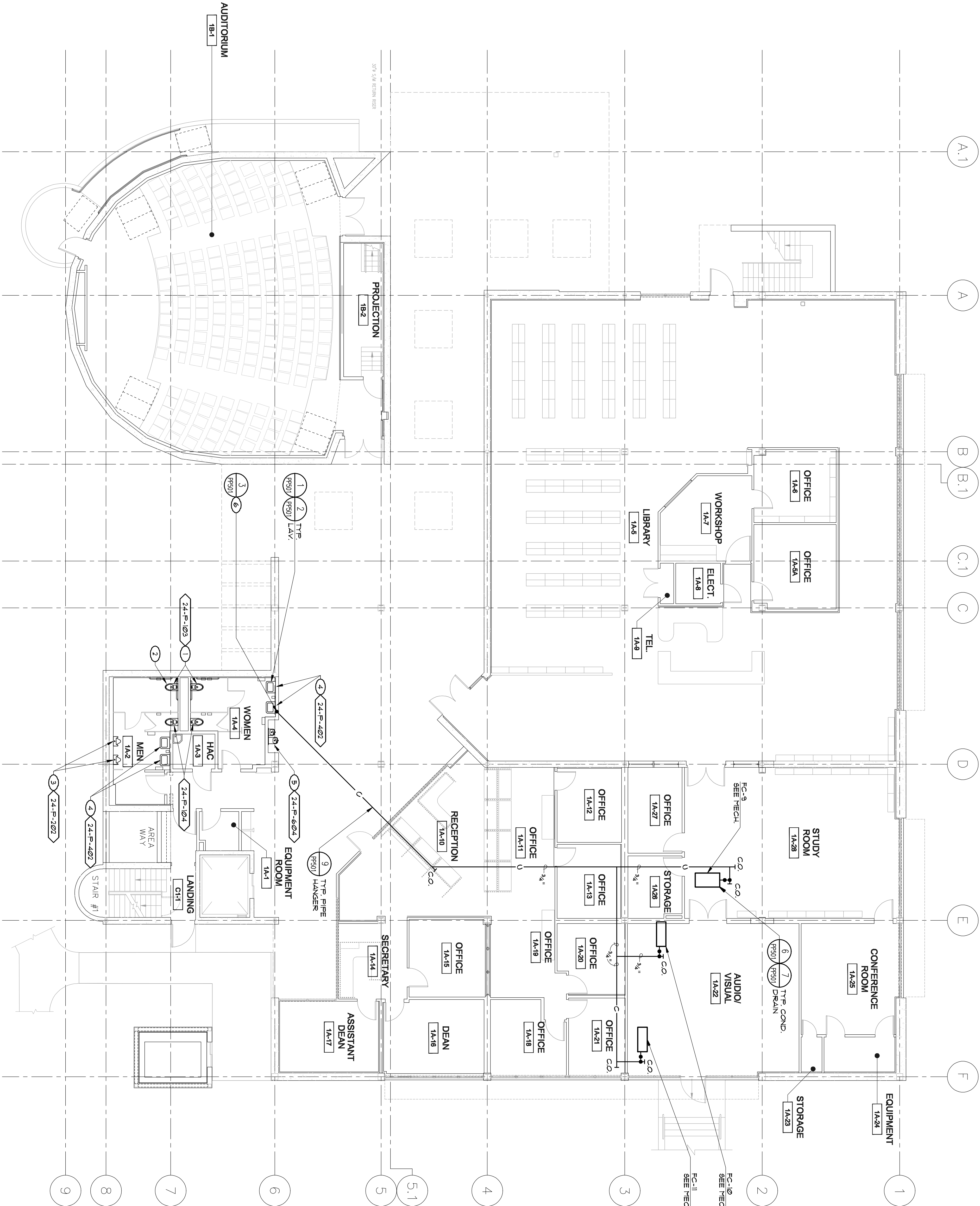


KEY NOTES

- REPLACE (E) WATER CLOSET WITH REIMPORT HEIGHT WALL HOUNT WATER CLOSET.
- REQUIRE WATER CONNECTION TO OPPOSITE SIDE OF WATER CLOSET. WATER CLOSET SHALL BE 60" SO 1/2" VALVE HANDLE IS AT THE WIDE SIDE OF STALL.
- REPLACE (E) WALL MOUNT URINAL WITH U34S COMPLIANT MODEL.
- REMOVE AND INSTALL (750MM) LAND LAY-SQUARED 400W OR EQUIV. INSULATED RUBBER URINE ON P-TRAP AND ASKLE STOP ASSEMBLY UNDER LAVATORY.
- REPLACE (E) SINGLE HEIGHT ELECTRIC DRINKING FOUNTAIN WITH DUAL HEIGHT REFRIGERATED DRINKING FOUNTAIN.
- 3/4" CONDENSATE DRAIN IN ATTIC SLOPE DOWN 1/4" SEE FOOT, DROP DOWN NEAR WALL AND CONNECT TO TAILPIECE AT LAVATORY.

PLUMBING FIXTURE NOTE

REFER TO SHEET P-600 FOR PLUMBING FIXTURE SCHEDULE. ALL NEW FIXTURES SHALL HAVE NEW ROUGH-IN CONNECTED TO (E) PIPES THRU WALL.



1 FIRST FLOOR PLUMBING REMODEL PLAN



SCALE: 1/8" = 1'-0"

CONSULTANTS:

LP Consulting Engineers, Inc.
885 W. Jackson Ave., Suite 101, Chula, CA 92012
P 650-245-1515
www.lpece.com
Joe R. 10-1089



ARCHITECT/ENGINEERS:

HMC Architects
1827 E. Palmdale, Suite 103, Fresno, CA 93720
T 559 322 2444 / www.hmcarchitects.com

Drawing Title
FIRST FLOOR PLUMBING
REMODEL PLAN

Approved Project Director

Project Title
BUILDING 24
SEISMIC CORRECTION
AND ADDITION

Location
VAMC FRESNO, CA

Date
March 12, 2013

Checked
KK

Drawn
DN

Project Number
570-215
Building Number
24

Drawing Number
PP101

Dwg. Title of 180

Office of
Construction
and Facilities
Management

