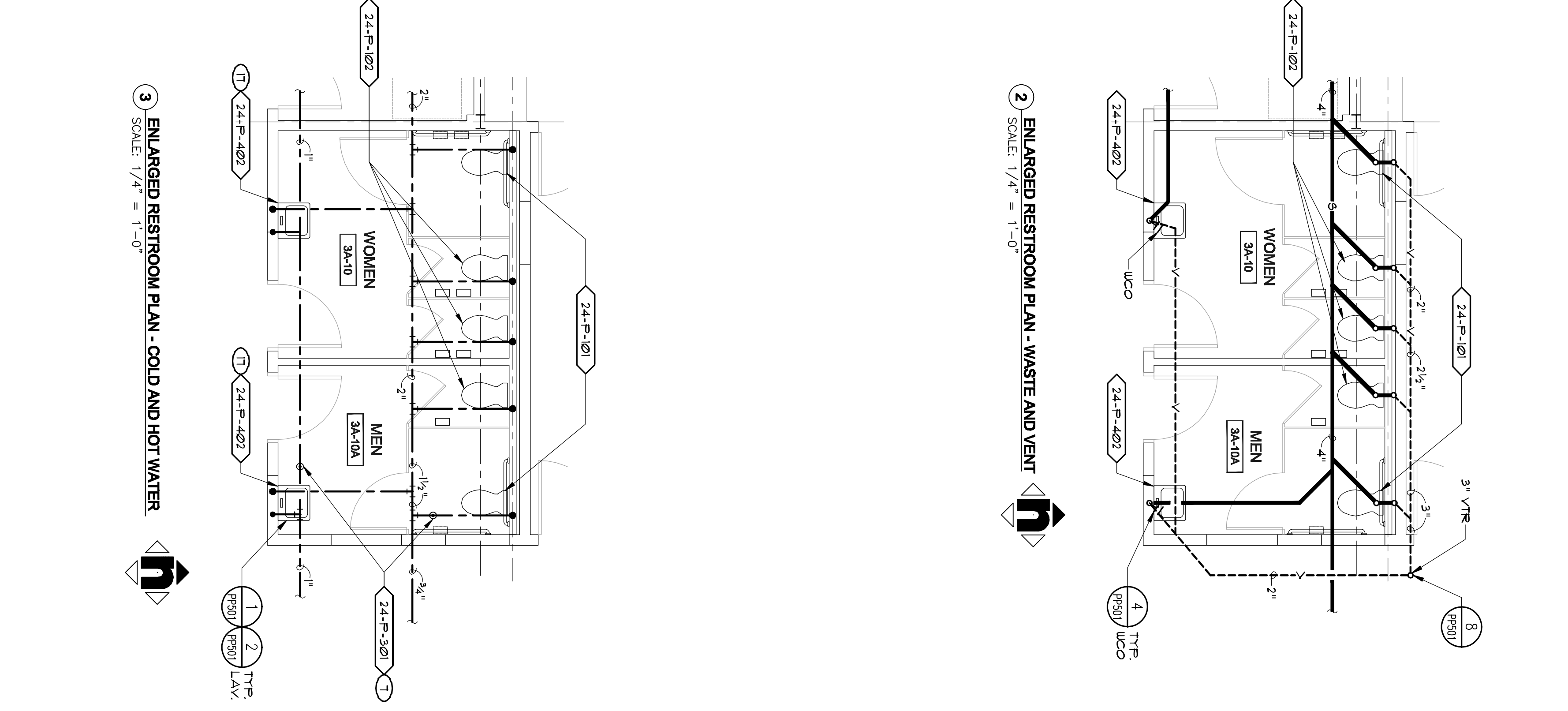


KEY NOTES

- REPLACE (E) WATER CLOSET WITH REEPORT HEIGHT WALL HOOKY WATER CLOSET.
- REROUTE WATER CONNECTION TO OPPOSITE SIDE OF WATER CLOSET. ROTATE FLUSH VALVE AROUND 90° SO VALVE HANDLE IS AT THE WIDE SIDE OF STALL.
- REPLACE (E) WALL MOUNT URINAL WITH (E)AS COMPLIANT MODEL AND PROVIDE ALL NEW ROUGH-IN.
- REPLACE (E) WALL MOUNT LAVATORY WITH (E)AS COMPLIANT MODEL AND PROVIDE ALL NEW ROUGH-IN. PROVIDE AND INSTALL (E)AS COMPLIANT CUPBOARD AND COUNTER TOP ASSEMBLIES UNDER LAVATORY.
- REPLACE (E) SINGLE HEIGHT ELECTRIC DRINKING FOUNTAIN WITH DUAL HEIGHT REFRIGERATED DRINKING FOUNTAIN.
- 3" ROOF DRAIN DROP DOWN IN WALL FROM NEW THIRD FLOOR ADDITIONAL ROOF DRAIN. SEE SHEET PP102 FOR CONTINUATION.
- PROVIDE WATER HAMMER ARRESTOR (WHA-1) AT END OF CU AND HW PIPE RUNS.
- FLOOR AT (E) 4" SOIL DROP IN PLUMBING CHASE AT SECOND FLOOR ATTIC.
- FLOOR AT (E) 2" PIPE IN THIRD FLOOR ATTIC.
- 3/4" CONDENSATE DRAIN IN ATTIC SLOPE DOWN 1/4" PER FOOT, LAY OUT INSIDE WALL AND CONNECT TO TAILPICE AT LAVATORY.
- POC AT (E) 1" LUB PIPE IN THIRD FLOOR ATTIC. REMOVE SECTION OF PIPE BETWEEN POC'S SO HW REROUTES TO EXAM ROOM AND MAINTAIN'S CONTINUOUS LOOP.
- 2" VTR ROUTE 1/4" VENT DOWN FROM VTR TO EACH 16-1.
- 1/4" CU UP THRU ROOF TO HOSE BIBS.
- 3" OD DROP DOWN IN WALL FROM NEW THIRD FLOOR ADDITIONAL ROOF DRAIN. SEE SHEET PP102 FOR CONTINUATION.
- 3" OD DROP DOWN IN WALL FROM THIRD FLOOR CONTINUATION.
- 3" OD RUN IN THIRD FLOOR ATTIC TO 1/4" BEYOND SURFACE OF EXTERIOR WALL. SEE SHEET PP102 FOR CONTINUATION OF EXTERIOR WALL.
- PROVIDE AND INSTALL (E)AS COMPLIANT LAVATORY (E)AS COMPLIANT MODEL AND PROVIDE ALL NEW ROUGH-IN. PROVIDE AND INSTALL (E)AS COMPLIANT CUPBOARD AND COUNTER TOP ASSEMBLIES UNDER LAVATORY.

PLUMBING FIXTURE NOTE

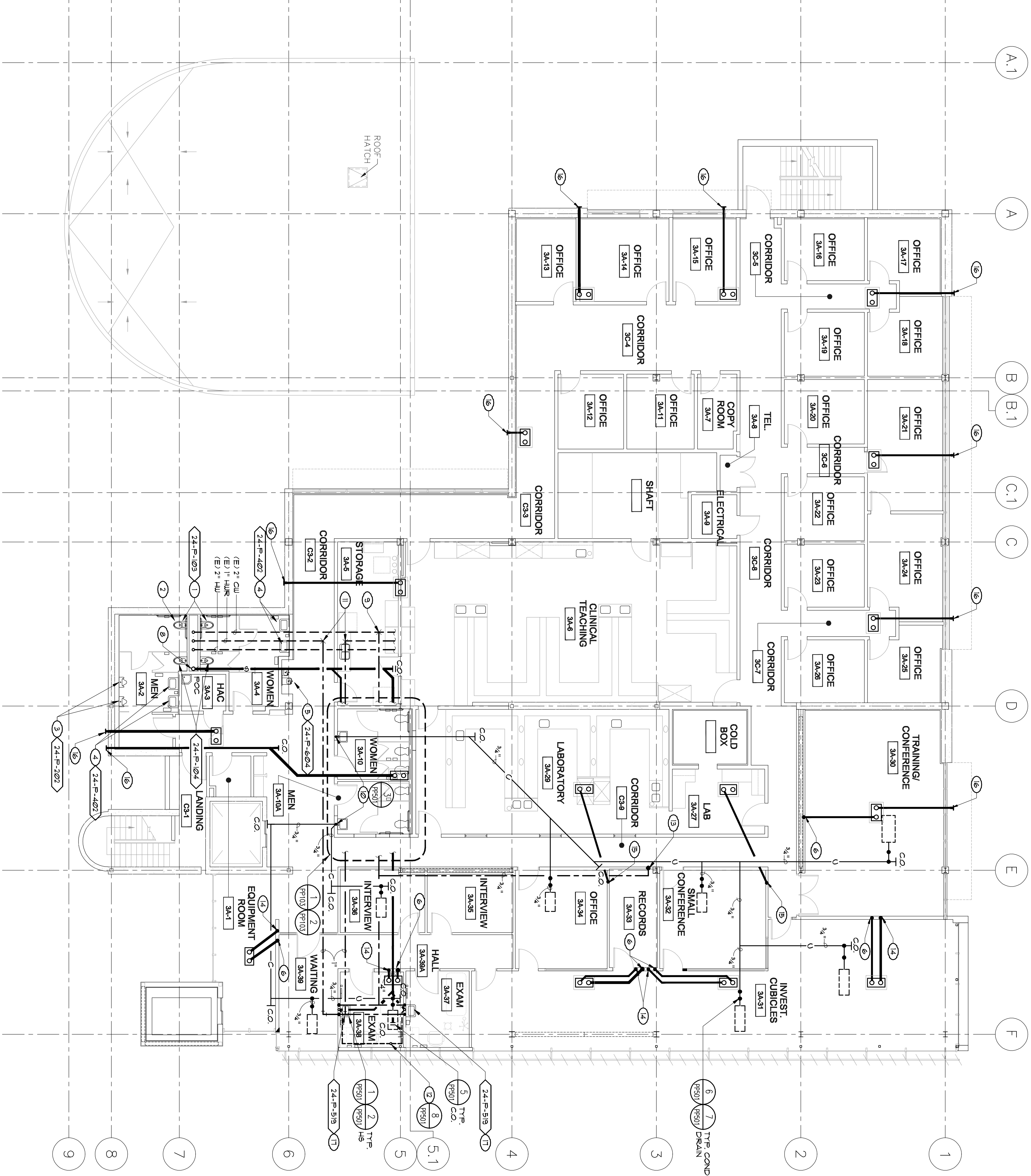
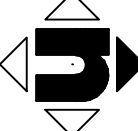
REFER TO SHEET PP100 FOR PLUMBING FIXTURE SCHEDULE. ALL PLUMBING FIXTURES SHALL HAVE NEW ROUGH-IN CONNECTED TO (E) PIPES THRU WALL.



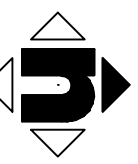
3 ENLARGED RESTROOM PLAN - COLD AND HOT WATER



2 ENLARGED RESTROOM PLAN - WASTE AND VENT



1 THIRD FLOOR PLUMBING REMODEL PLAN



CONSULTANTS:

LP Consulting Engineers, Inc.
885 W. Adams Ave., Suite 101, Costa, CA 95012
P 650.955.5151
www.lpconsulting.com
Joe R. (310) 488



ARCHITECT/ENGINEERS:

HMC Architects
1827 E. Pi Avenue, Suite 103, Fresno, CA 93720
T 559.322.2444 / www.hmcarchitects.com



THIRD FLOOR PLUMBING REMODEL PLAN

Approved Project Director

Project Title
**BUILDING 24
SEISMIC CORRECTION
AND ADDITION**

Location
VAMC, FRESNO, CA

Date
March 12, 2013

Checked
KK

Drawn
DN

Project Number
570-215

Building Number
24

Drawing Number
PP103

Dwg. 113 of 180

Office of
**Construction
and Facilities
Management**

