

KEY NOTES

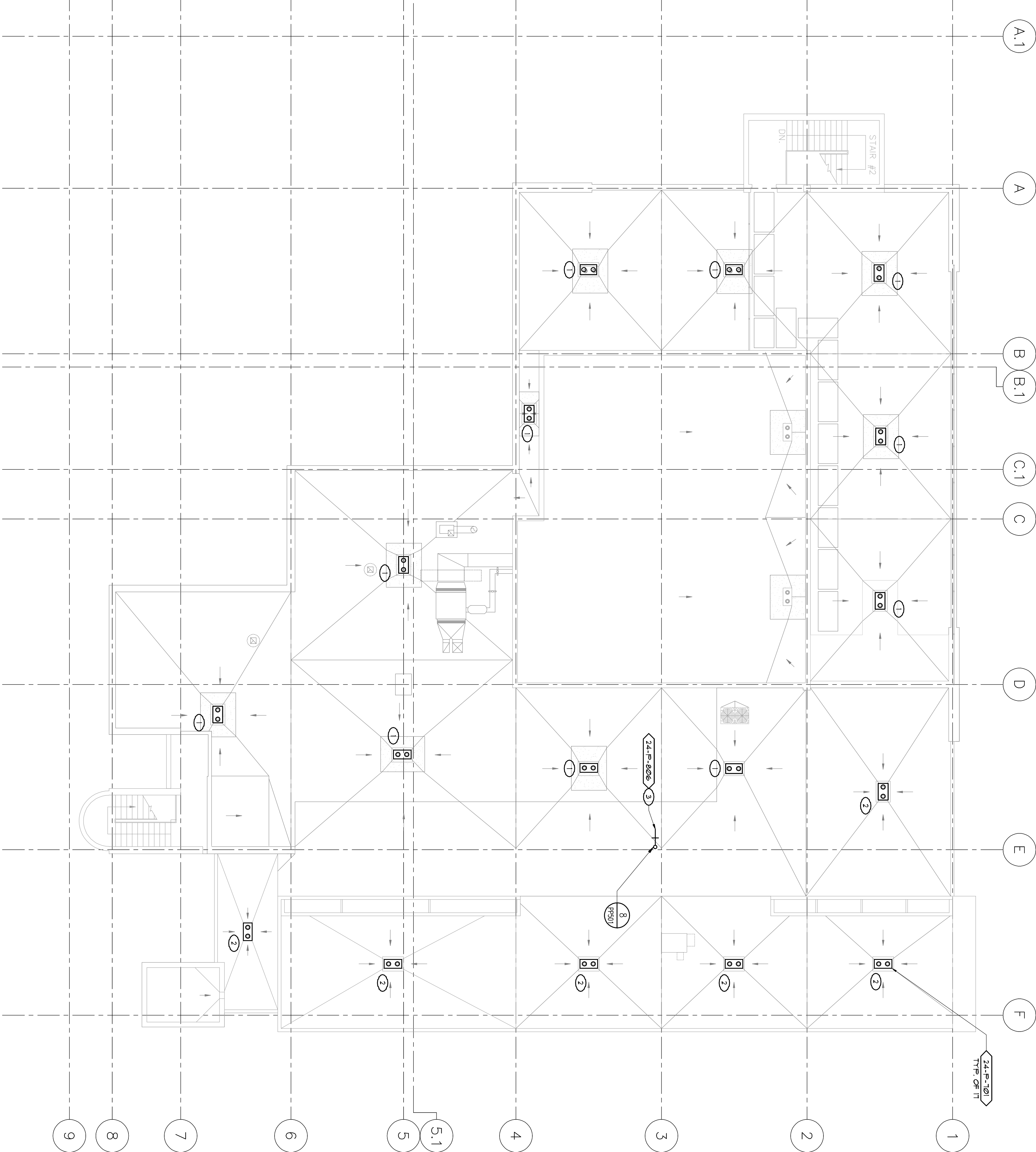
① COMBINATION ROOF OVERLOU DRAIN. CONNECT NEW 3" ED 100 LINE IN ATTIC AND ROUTE AS SHOWN ON SHEET PP03.

② COMBINATION ROOF OVERLOU DRAIN. 3" ED 100 CONNECTIONS SEE SHEET PP03 FOR CONTINUATION.

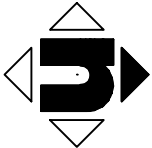
③ LOSE RISER ON ROOF. SEE SHEET PP03 FOR CONTINUATION OF 3/4" CUL.

PLUMBING FIXTURE NOTE

REFER TO SHEET PP600 FOR PLUMBING FIXTURE SCHEDULE.



1 PENTHOUSE PLUMBING REMODEL FLOOR AND ROOF PLAN
SCALE: 1/8" = 1'-0"



CONSULTANTS:		ARCHITECT/ENGINEERS:	
<div><div>REG. STATE OF CALIF. NO. 33390 PLUMBING J. P. ENGINEERS, INC. 885 W. Ashland Ave., Suite 101, Costa, CA 95012 P. 650.455.1515 www.jpe-engineers.com J. P. 10/10/09</div><div><div>REG. STATE OF CALIF. NO. 33390 PLUMBING J. P. ENGINEERS, INC. 885 W. Ashland Ave., Suite 101, Costa, CA 95012 P. 650.455.1515 www.jpe-engineers.com J. P. 10/10/09</div></div></div>		<div><div>REG. STATE OF CALIF. NO. 33390 PLUMBING J. P. ENGINEERS, INC. 885 W. Ashland Ave., Suite 101, Costa, CA 95012 P. 650.455.1515 www.jpe-engineers.com J. P. 10/10/09</div><div><div>REG. STATE OF CALIF. NO. 33390 PLUMBING J. P. ENGINEERS, INC. 885 W. Ashland Ave., Suite 101, Costa, CA 95012 P. 650.455.1515 www.jpe-engineers.com J. P. 10/10/09</div></div></div>	
Drawing Title PENTHOUSE PLUMBING REMODEL FLOOR AND ROOF PLAN		Project Title BUILDING 24 SEISMIC CORRECTION AND ADDITION	
Approved Project Director		Location VALMCO FRESNO, CA	
Date March 12, 2013		Checked KK	
Draught DN		Drawing Number PP104 Dwg. 114 of 180	
Office of Construction and Facilities Management		Department of Veterans Affairs	