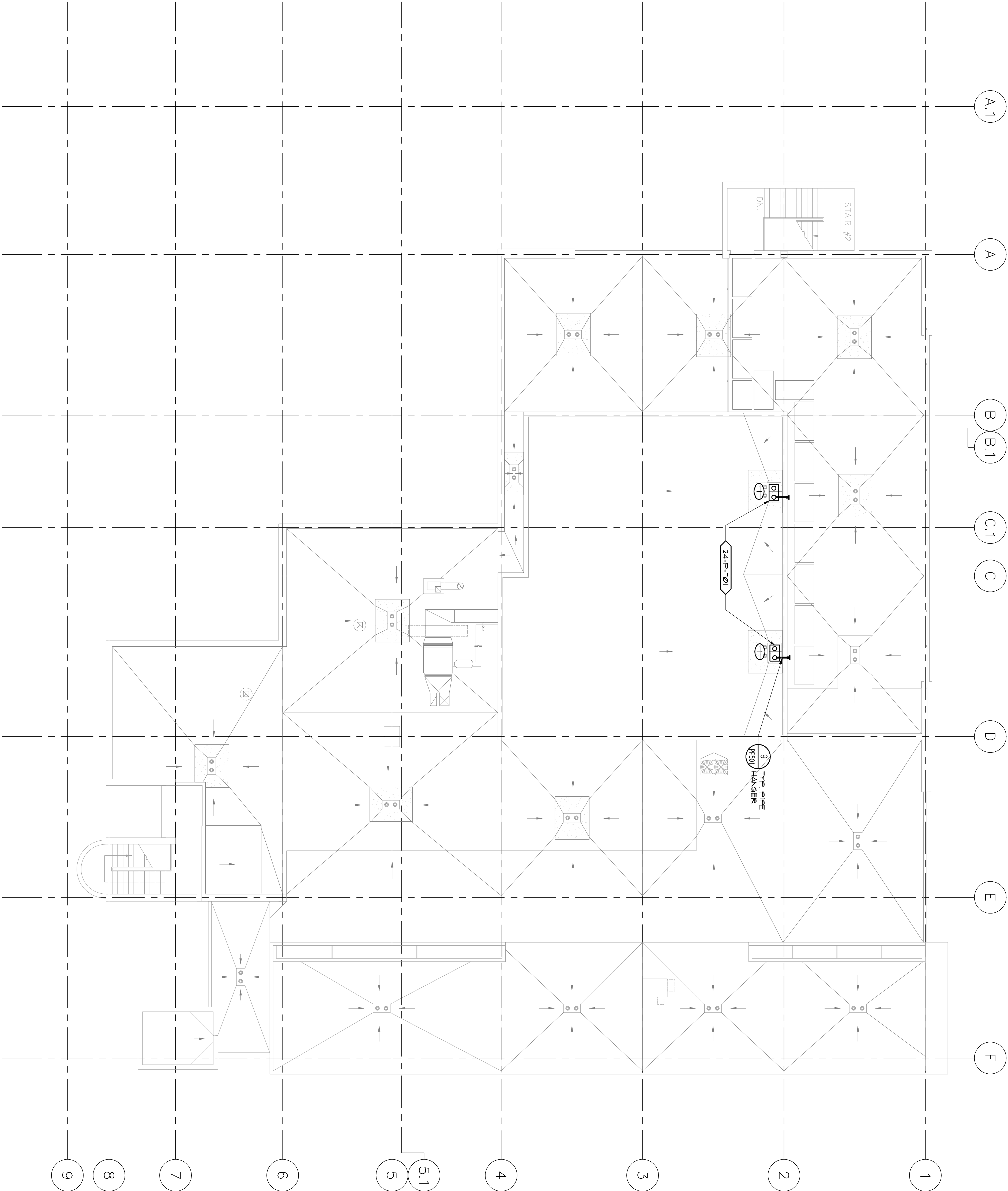


KEY NOTES

○ COMBINATION ROOF (REFLECT) DRAIN, CONNECT NEW 3" (Ø) ATTC AND ROUTE 1/2" BEYOND SURFACE OF EXTERIOR WALL.

PLUMBING FIXTURE NOTE

REFER TO SHEET PP000 FOR PLUMBING FIXTURE SCHEDULE.



1 PLUMBING REMODEL ROOF PLAN
SCALE: 1/8" = 1'-0"

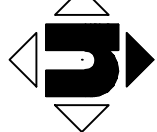
CONSULTANTS:

LP Consulting Engineers, Inc.
885 W. Jackson Ave., Suite 101, Costa, CA 95012
P 650.955.5555
www.lpengineers.com
John R. 10/10/09



ARCHITECT/ENGINEERS:

HMC Architects
1827 E. Pi Avenue, Suite 103, Fresno, CA 93720
T 559.322.2444 / www.hmcarchitects.com



Drawing Title
PLUMBING REMODEL
ROOF PLAN

Approved Project Director

Project Title
BUILDING 24
SEISMIC CORRECTION
AND ADDITION

Location
VALMCO FRESNO, CA

Date
March 12, 2013

Checked
KK

Drawn
DN

Project Number
570-215

Building Number
24

Drawing Number
PP105

Dwg. 115 of 180

Office of
Construction
and Facilities
Management

