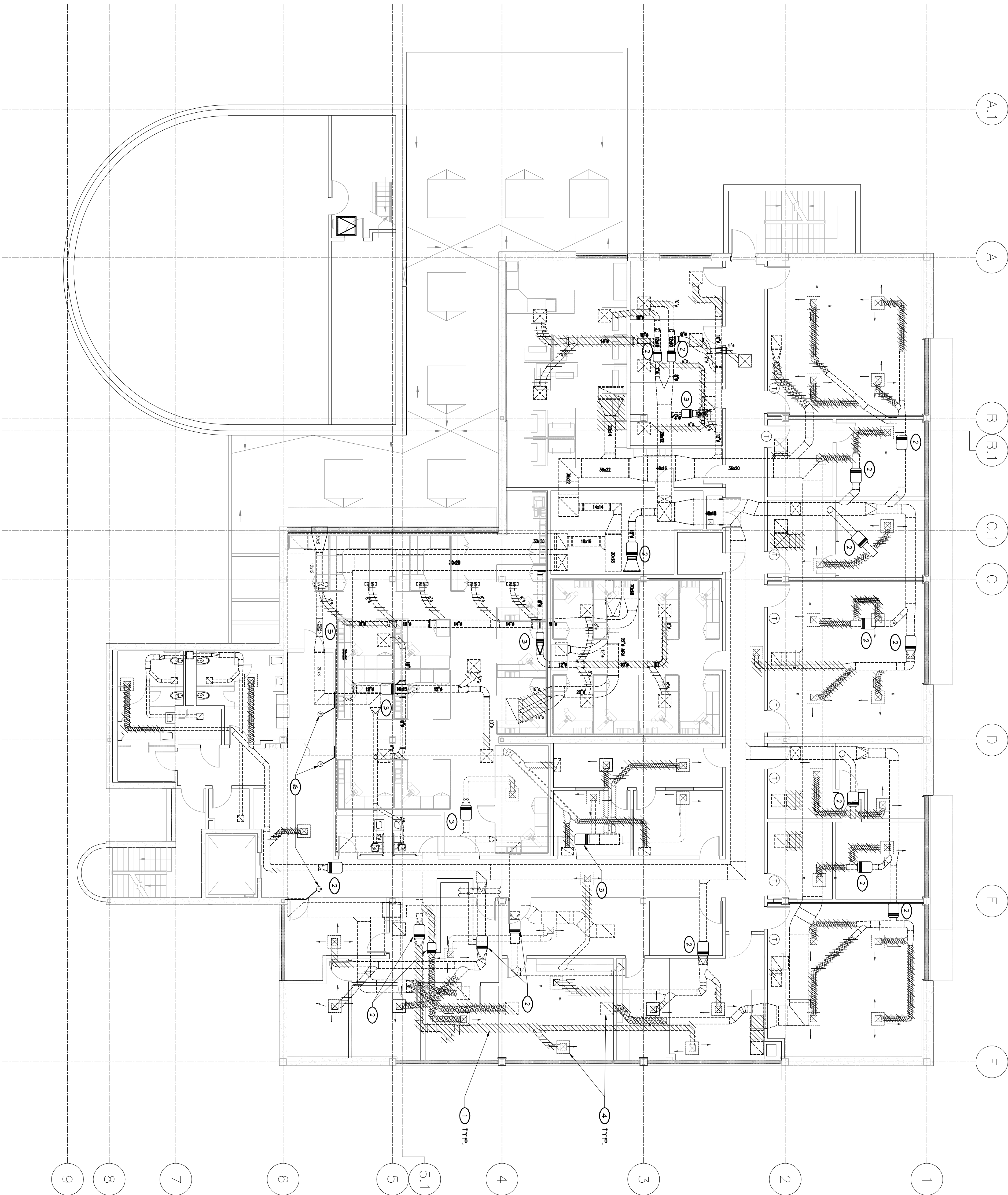


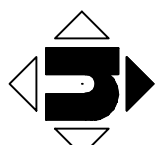
KEY NOTES

- ① REMOVE (E) DUCT AGAIN HATCHED. ALL DUCTWORK TO REMAIN SHALL BE CLEANED PER SPEC. SECTION 31.00.5.
- ② REMOVE (E) VAV BOX WITH REHEAT COIL.
- ③ REMOVE (E) VAV BOX.
- ④ REMOVE (E) CEILING GRILLE.
- ⑤ (E) ATTIC MOUNT IN-LINE EXHAUST FAN TO REMAIN.
- ⑥ (E) MAGNETIC PRESSURE GAUGE AND SENSOR TUBING IN DUCT TO REMAIN. THIS IS TYPICAL AT ALL RETURN AND EXHAUST DUCT PENETRATIONS THRU CORRIDOR WALL. NOT ALL ARE SHOWN ON PLAN.



① SECOND FLOOR MECHANICAL DEMOLITION PLAN

SCALE: 1/8" = 1'-0"



CONSULTANTS:

**LP Consulting Engineers, Inc.**  
885 W. Jackson Ave., Suite 101, Chula, CA 92012  
P 650.625.1511  
www.lpece.com  
Joe R. 10-1089



ARCHITECT/ENGINEERS:

**HMC Architects**  
1827 E. Ft. Avenue, Suite 103, Fresno, CA 93720  
T 559.322.2444 / www.hmcarchitects.com

Drawing Title  
**SECOND FLOOR MECHANICAL  
DEMOLITION PLAN**

Approved Project Director

Project Title  
**BUILDING 24  
SEISMIC CORRECTION  
AND ADDITION**

Location  
**VAMC FRESNO, CA**

Date  
**March 12, 2013**

Checked  
**KK**

Drawn  
**DN**

Project Number  
**570-215**

Building Number  
**24**

Drawing Number  
**MD102**

Dwg. 133 of 180

Office of  
Construction  
and Facilities  
Management

