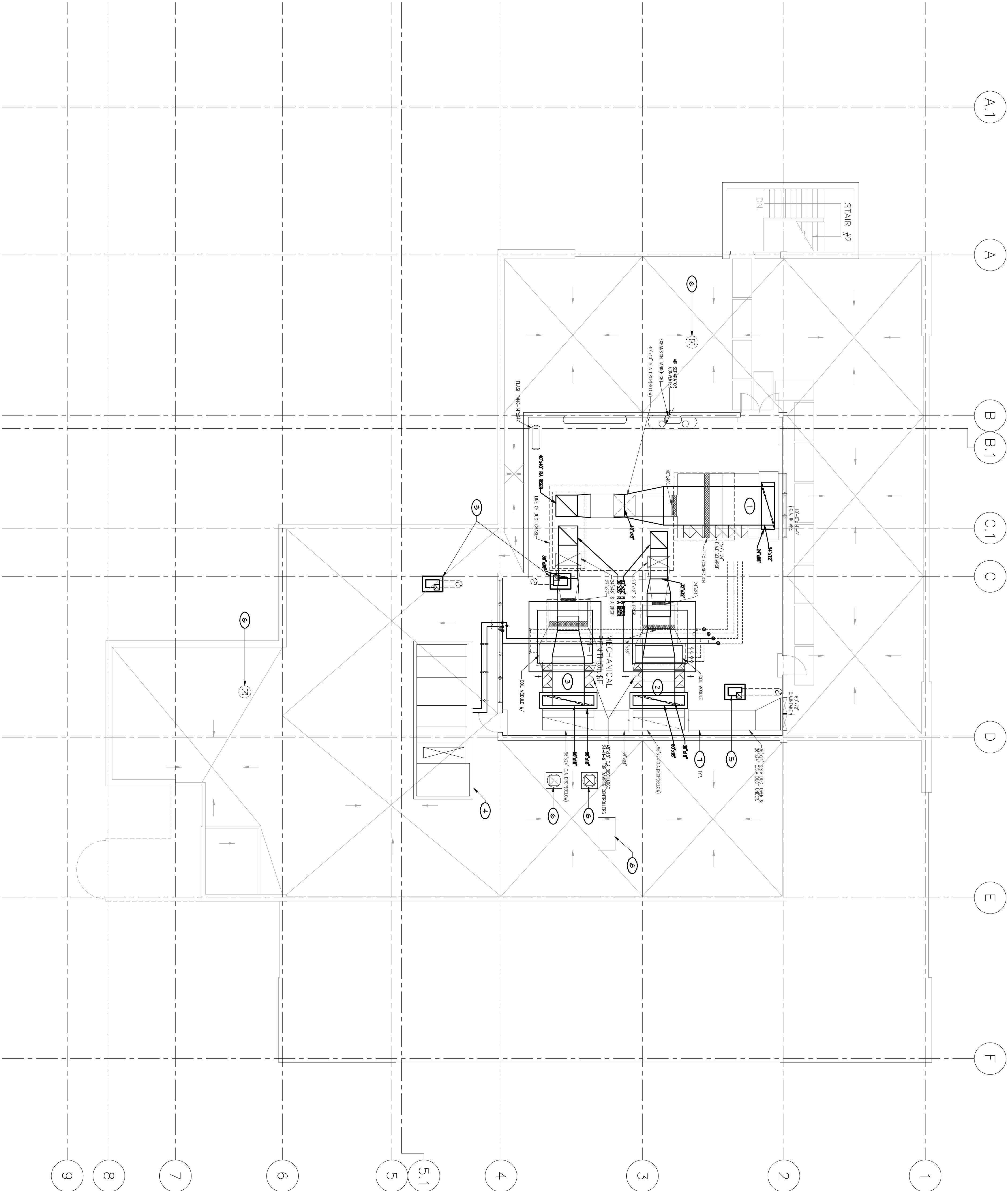
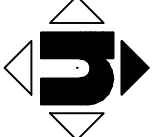


KEY NOTES

- 1 (E) A-4 TO REMAIN. REMOVE INDIVIDUAL SUPPLY FAN 1'S AND SHEAVES. ALL PNEUMATIC CONTROLS SHALL ALSO BE REMOVED.
- 2 (E) A-3 TO REMAIN. REMOVE INDIVIDUAL SUPPLY FAN MOTOR. RETURN FAN MOTOR WITH ALL ASSOCIATED BELTS REMOVED. ALL PNEUMATIC CONTROLS SHALL ALSO BE REMOVED.
- 3 (E) A-4 TO REMAIN. REMOVE INDIVIDUAL SUPPLY FAN MOTOR. RETURN FAN MOTOR WITH ALL ASSOCIATED BELTS AND SHEAVES. ALL PNEUMATIC CONTROLS SHALL ALSO BE REMOVED.
- 4 (E) A-1 TO REMAIN.
- 5 (E) PIPE HOOD UTILITY TYPE EXHAUST FAN ON ROOF TO REMAIN. REMOVE (3) 1/2 GAUGE GUIDE WIRES TO STRUCTURE TO SUPPORT 1'-0" HIGH DUCT OUTLET STACK.
- 6 (E) ROOFTOP EXHAUST FAN TO REMAIN.
- 7 CLEAN ALL (E) DUCTWORK TO REMAIN PER SPEC. SECT 23 31 00.
- 8 (E) TRANSFORMER ON ROOF TO REMAIN.



1 PENTHOUSE MECHANICAL DEMO FLOOR AND ROOF PLAN



CONSULTANTS:

LP Consulting Engineers, Inc.
685 W. Jackson Ave., Suite 101, Chicago, IL 60612
P 800.443.4343 / 773.462.6151
www.lpengineering.com
John R. 784-0889



ARCHITECT/ENGINEERS:

HMC Architects
1827 E. Pi Avenue, Suite 103, Fresno, CA 93720
T 559 322 2444 / www.hmcarchitects.com

Drawing Title
PENTHOUSE MECHANICAL DEMO FLOOR AND ROOF PLAN

Project Title
**BUILDING 24
SEISMIC CORRECTION
AND ADDITION**

Project Number
570-215

Approved Project Director

Location
VAMC FRESNO, CA

Date
March 12, 2013

Checked
KK

Drawn
DN

Drawing Number
MD104
Dwg 135 of 180

Office of
Construction
and Facilities
Management

