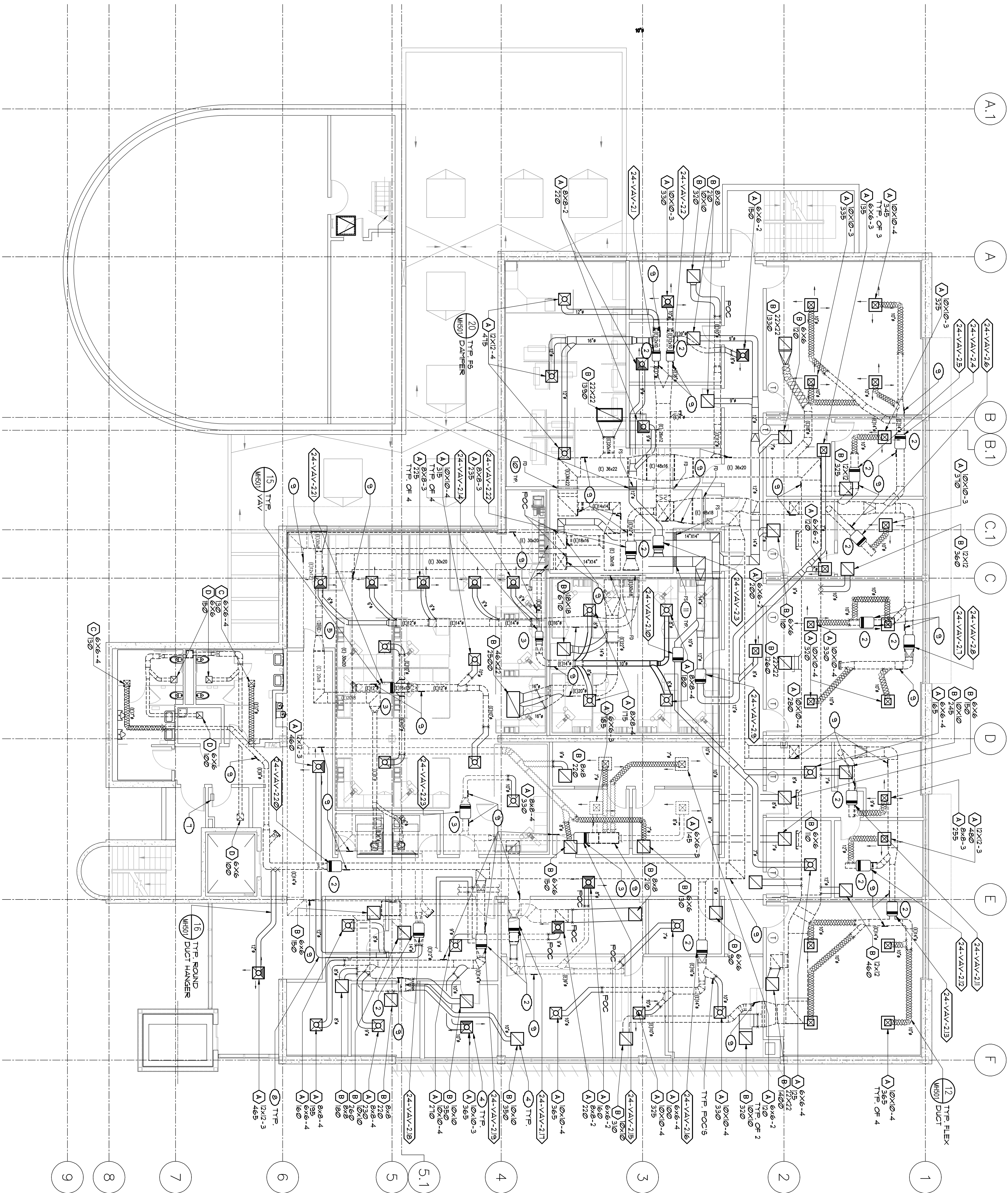


KEY NOTES

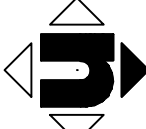
- (E) ALL TO BE REPLACED. REUSE EXISTING AVAILABLE SUPPLY ASSOCIATED FLEX CONNECTIONS AND CONTROLS. ADD SERVIC BRACING TO MAIN DUCTWORK.
- VAV BOX WITH REHEAT COIL. CONNECT TO (E) DUCTWORK.
- VAV BOX CONNECT TO (E) DUCTWORK.
- ATTACH CEILING GILLETTE TO T-BAR CEILING GRID WITH (1) 1/2" BOLT. SCHEDULE ON EACH SIDE.
- (E) ATTIC MOUNT IN-LINE EXHAUST FAN TO REMAIN.
- (E) ROOFTOP EXHAUST FAN TO REMAIN.
- ADD 12"X12" DOOR LOWER AT 12" FOOT BOTTOM OF DOOR.
- SEE DETAILS 1. THROUGH SHEET 114-01 FOR TYPICAL DUCT DETAILS.
- PROVIDE GASKETED REMOVABLE ACCESS PANEL ON SIDE OF (E) DUCT TO REMAIN AND CLEAN DUCT PER SPEC SECT. 13.31.00. PARAGRAPH 3.6.
- (E) FIRE DAMPER (FD) TO REMAIN.
- INSTALL NEW FINE SMOKE DAMPER.

EQUIPMENT NOTE

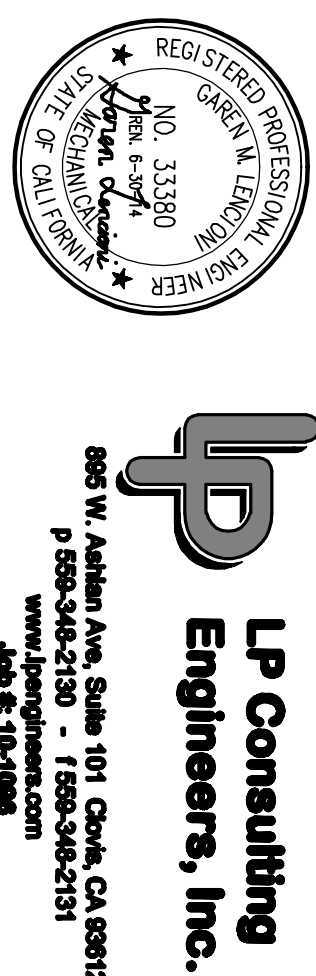
REFER TO SHEETS 114-00 AND 114-01 FOR EQUIPMENT SCHEDULES.



1 SECOND FLOOR MECHANICAL REMODEL PLAN



CONSULTANTS:



ARCHITECT/ENGINEERS:



Drawing Title
SECOND FLOOR MECHANICAL
REMODEL PLAN

Project Title
BUILDING 24
SEISMIC CORRECTION
AND ADDITION

Project Number
570-215
Building Number
24

Approved Project Director

Location
VAMC FRESNO, CA

Date
March 12, 2013

Checked
KK

Drawn
DN

Drawing Number
MH102
Dwg 138 of 180

Office of
Construction
and Facilities
Management

