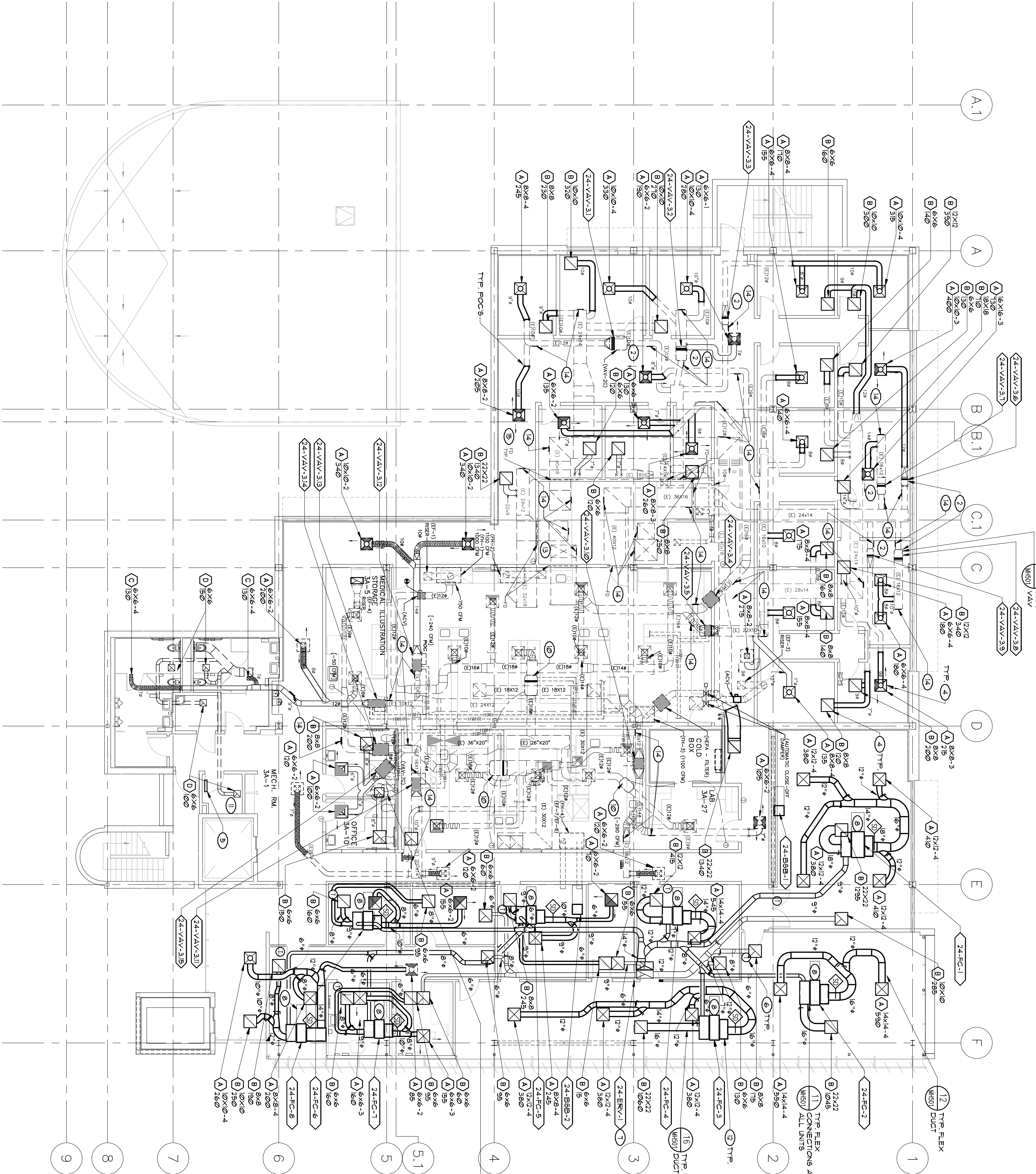


KEY NOTES

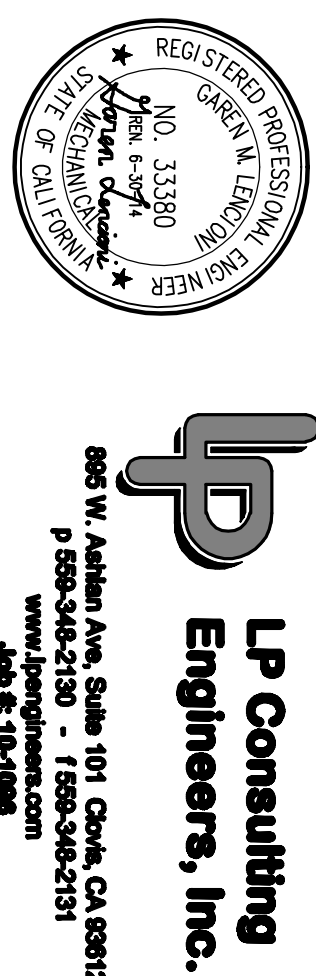
- (1) (E) PIPE HOOD TO REMAIN.
- (2) VAV BOX WITH REHEAT COIL. CONNECT TO (E) DUCTWORK.
- (3) VAV BOX CONNECT TO (E) DUCTWORK.
- (4) ATTACH CEILING GRILLE TO T-BAR CEILING GRID WITH (1) 1/2" BOLT, SPACED ON EACH SIDE.
- (5) ADD 12"x12" DOOR LOWER AT 42" FROM BOTTOM OF DOOR.
- (6) ENERGY RECOVERY VENTILATOR ON ROOF.
- (7) THERMOSTAT MOUNTED AT 48" AFF.
- (8) FAN COIL MOUNTED IN ATTIC.
- (9) EXHAUST FAN ON ROOF. 10"x10" DUCT DROP THRU ROOF.
- (10) (E) VAV BOX TO REMAIN.
- (11) PROVIDE 12" DUCTLESS GRILLE 8'x12" COOLING ONLY UNIT ABOVE DOOR FOR ELEVATOR EQUIPMENT ROOM. OUTDOOR ELECTRICAL DRAWINGS FOR ALL POWER REQUIREMENTS.
- (12) SEE DETAILS 1 THRU 10 SHEET M1601 FOR TYP DUCT DETAILS.
- (13) BLANK ONE HUND DUCTS IN THIS ROOM SERVING THIRD FLOOR CORRIDOR. PROVIDE BLANK ONE HUND DUCTS FOR THIS ROOM SERVING SECOND FLOOR FOR PHASE 2 WORK.
- (14) PROVIDE BLANK ONE HUND DUCTS IN THIS ROOM SERVING SECOND FLOOR. OUTSIDE DIMENSIONS ARE 35"x26", 35"x26", 35"x26", 35"x26". DUCT DROPS TO SECOND FLOOR ARE FOR FIRST FLOOR. WORK IN NORTHWEST CORNER ARE FOR FIRST FLOOR.
- (15) PROVIDE CASSETTE REMOVABLE ACCESS PANEL ON SIDE OF (E) DUCT TO REMAIN AND CLEAN DUCT PER SPEC SECT. 23 31 00. PARAGRAPH 3.6.
- (16) (E) FIRE DAMPER (FD) TO REMAIN.

EQUIPMENT NOTE

REFER TO SHEETS M1600 AND M1601 FOR EQUIPMENT SCHEDULES



CONSULTANTS:



ARCHITECT/ENGINEERS:



Drawing Title
**THIRD FLOOR MECHANICAL
REMODEL PLAN**

Project Title
**BUILDING 24
SEISMIC CORRECTION
AND ADDITION**

Project Number
570-215

Building Number
24

Office of
Construction
and Facilities
Management

Location
VAMC FRESNO, CA

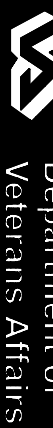
Date
March 12, 2013

Checked
KK

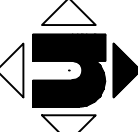
Drawn
DN

Drawing Number
MH103

Dwg. 129 of 180



1 THIRD FLOOR MECHANICAL REMODEL PLAN



SCALE: 1/8" = 1'-0"

Revisions:
Date

VA FORM 08-4321