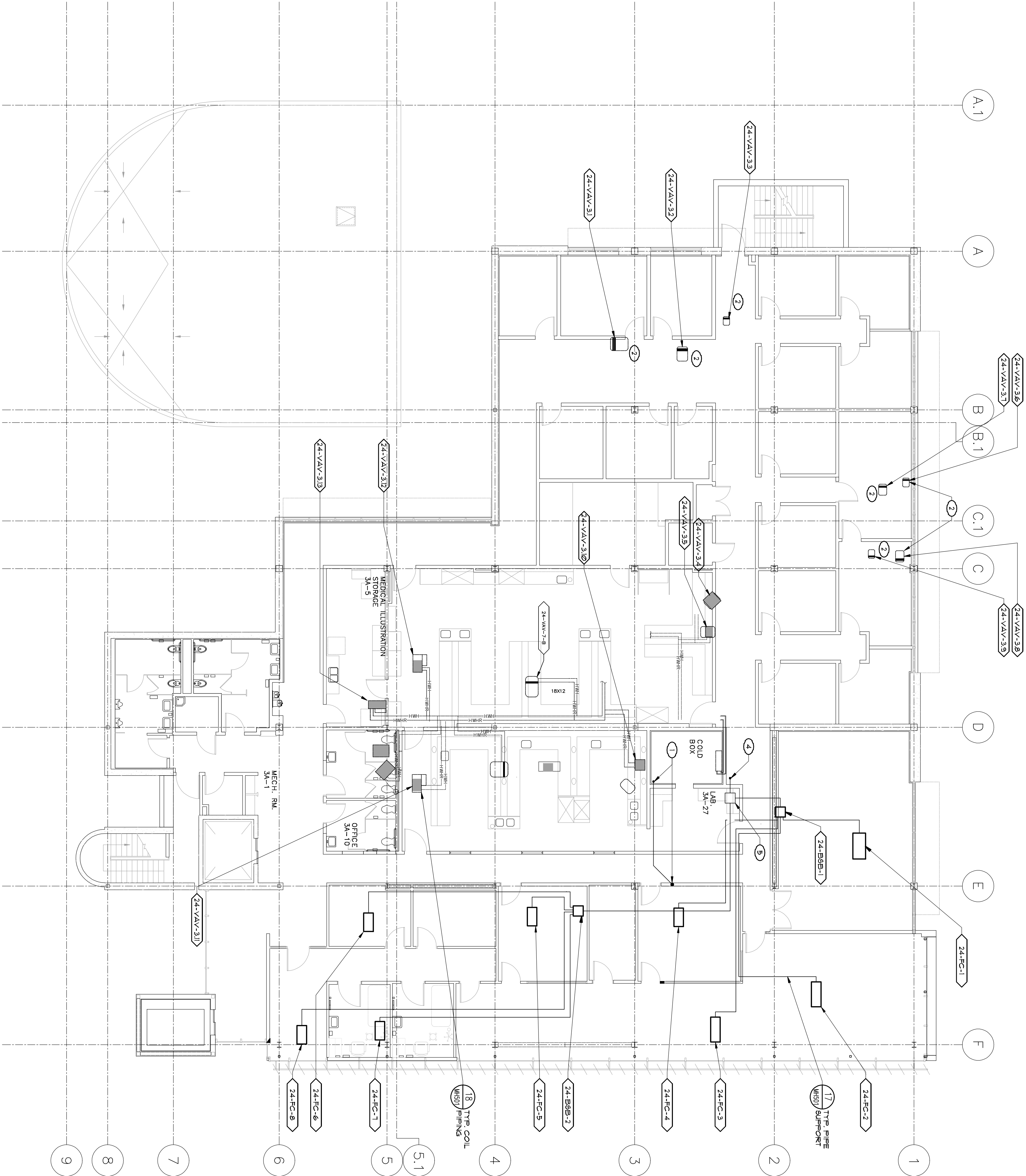


KEY NOTES

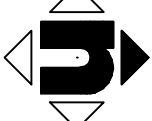
- ① REFRIGERANT PIPING DROPS THRU ROOF FROM COUL-2  
SECOND FLOOR. SEE SHEET MP-02 FOR CONTINUATION.
- ② VALVE BOX WITH REPEAT COIL. SEE PAGE ALL COIL PIPING  
VALVES ALONG WITH ALL ASSOCIATED CONTROLS.
- ③ VALVE BOX WITH NO HOT WATER COIL.
- ④ REFRIGERANT PIPING DROPS THRU ROOF FROM COUL-1  
AS SHOWN. SEE SHEET MP-02 FOR PIPE SIZES ON  
SCHEMATICS.
- ⑤ REFRIGERANT T-BRANCH FITTING IN ATTIC. SEE PIPING  
SCHEMATIC SHEET MP-02 FOR MODEL.

EQUIPMENT NOTE

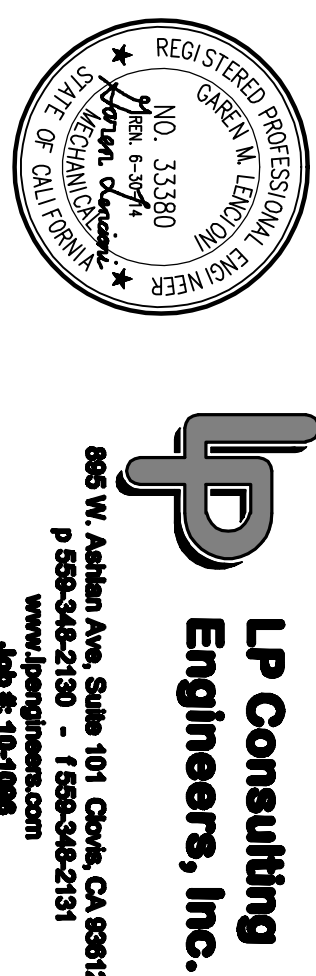
REFER TO SHEETS MH-000 AND MH-001 FOR EQUIPMENT  
SCHEDULES



1 THIRD FLOOR MECHANICAL REMODEL PIPING PLAN  
SCALE: 1/8" = 1'-0"



CONSULTANTS:



ARCHITECT/ENGINEERS:



**HMC Architects**  
1827 E. Pi Avenue, Suite 103 / Fresno, CA 93720  
T 559.322.2444 / www.hmcarchitects.com

Drawing Title  
**THIRD FLOOR MECHANICAL  
REMODEL PIPING PLAN**

Approved Project Director

Project Title  
**BUILDING 24  
SEISMIC CORRECTION  
AND ADDITION**

Project Number  
**570-215**

Building Number  
**24**

Drawing Number  
**MP103**

Dwg. 149 of 180

Office of  
Construction  
and Facilities  
Management



Revision:  
Date

VA FORM 08-4321