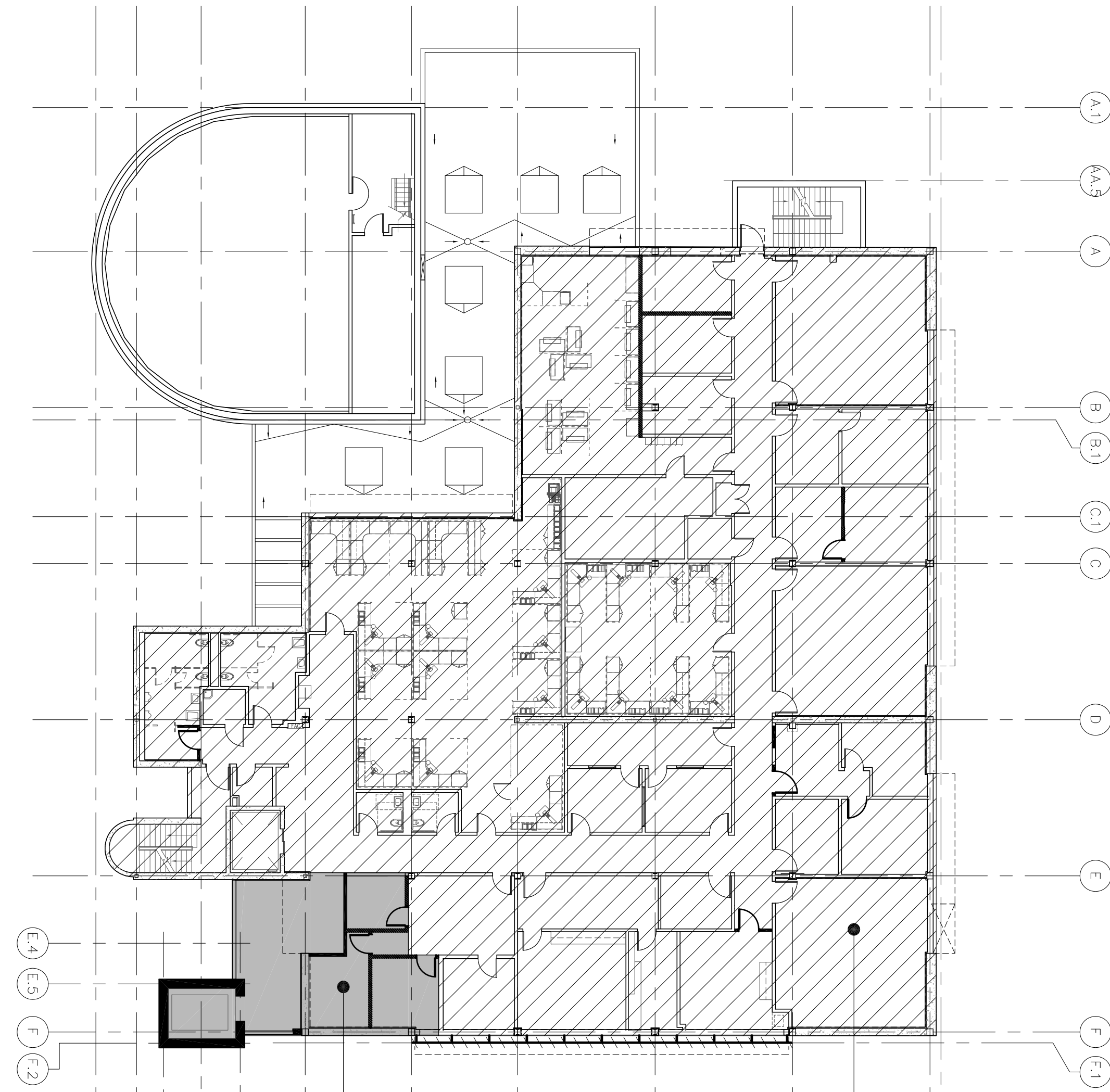
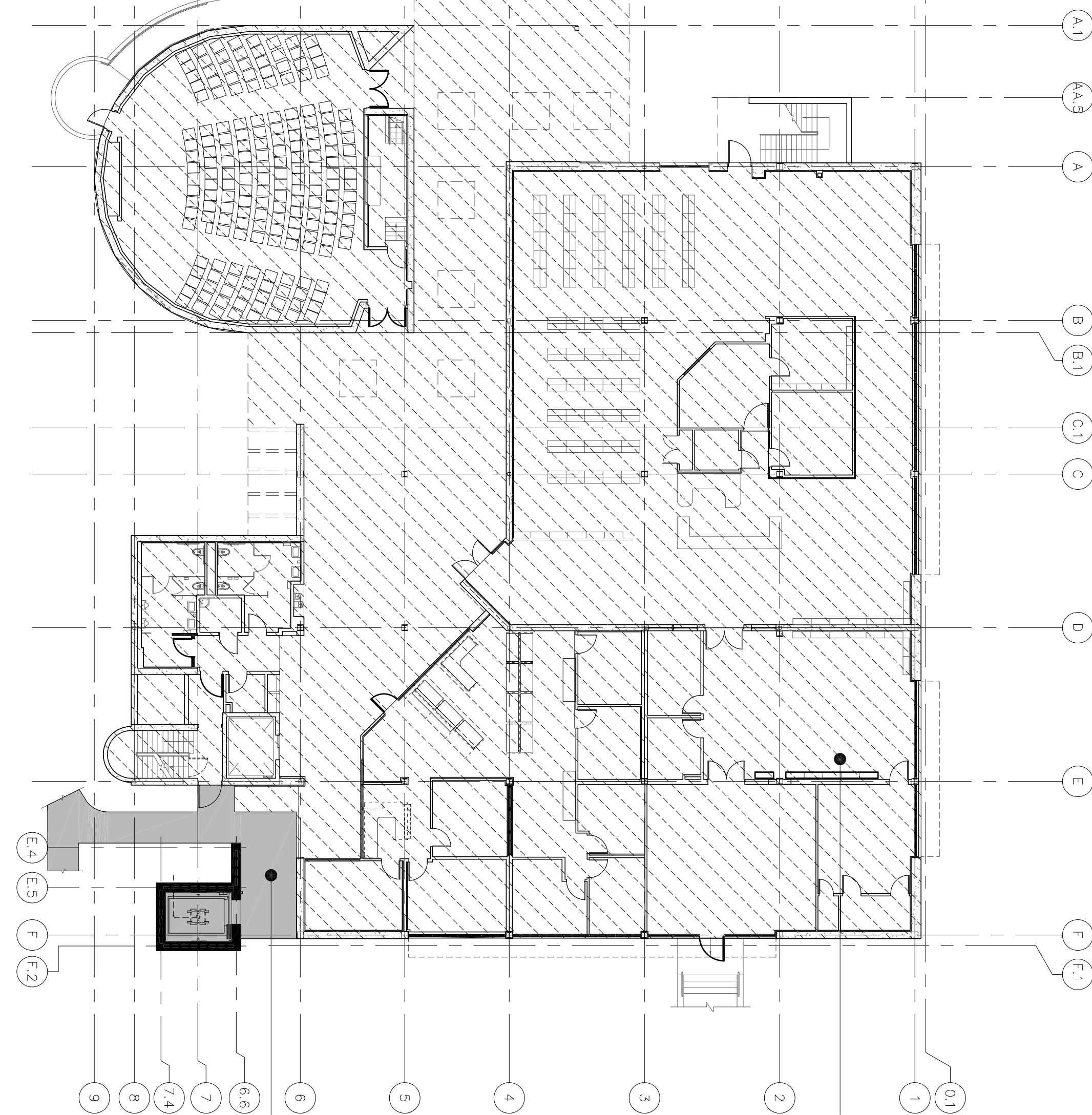


- ELECTRICAL CONSTRUCTION PHASING PLAN NOTES:**
- ① SEE SHEETS ES002, ES003, ES010, ES012, ES013, ES104 AND RELATED ELECTRICAL PLANS FOR PHASE 1A ELEVATOR AND WALKWAY ELECTRICAL WORK.
  - ② SEE SHEETS ES201, ES202, ES203, ES204 AND RELATED ELECTRICAL PLANS FOR PHASE 1A ELEVATOR AND PARTIAL SECOND FLOOR ELECTRICAL WORK.
  - ③ SEE SHEETS ES201, ES202, ES203, ES204 AND RELATED ELECTRICAL PLANS FOR PHASE 1A THIRD SECOND FLOOR ELECTRICAL WORK.
  - ④ SEE SHEETS ES402, ES403 AND RELATED ELECTRICAL PLANS FOR PHASE 1A ROOF ELECTRICAL WORK AND PHASE 1B AIR HANDLERS ELECTRICAL WORK.
  - ⑤ SEE SHEETS ES201, ES202, ES203, ES204 AND RELATED ELECTRICAL PLANS FOR PHASE 2 SECOND FLOOR ELECTRICAL WORK.
  - ⑥ SEE SHEETS ES101, ES102, ES103, ES104, ES105, ES106, ES107, ES108 AND RELATED ELECTRICAL PLANS FOR PHASE 3 FIRST FLOOR ELECTRICAL WORK.

③ ROOF - CONSTRUCTION PHASING PLAN



① THIRD FLOOR - CONSTRUCTION PHASING PLAN



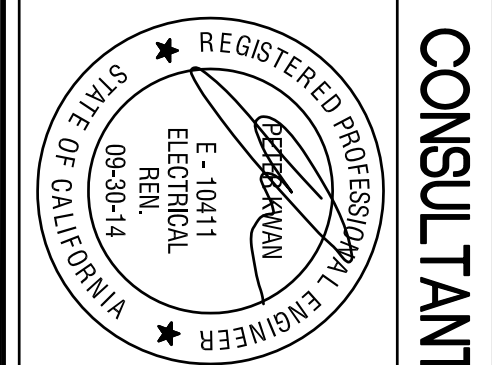
④ FIRST FLOOR - CONSTRUCTION PHASING PLAN



② SECOND FLOOR - CONSTRUCTION PHASING PLAN



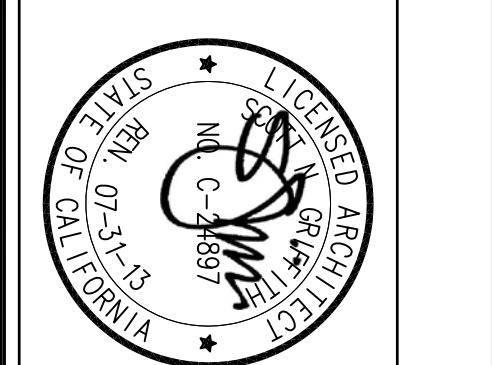
Project Number	570-215
Building Number	24
Drawing Number	ES002
Date	March 12, 2018
PK	PK
PK/L/S	PK/L/S



**CONSULTANTS:**

**LP Consulting Engineers, Inc.**

885 W. Ashlin Ave., Suite 101, Clovis, CA 93612  
P: 559.322.2444 / F: 559.322.2445  
www.lpe.com  
Job #: 10-1098



**ARCHITECT/ENGINEERS:**

**HMC Architects**

1827 E. 17th Avenue, Suite 103, Fresno, CA 93720  
T: 559.322.2444 / www.hmcarchitects.com

**Drawing Title**

**ELECTRICAL CONSTRUCTION PHASING PLAN**

**Approved Project Director**

**Project Title**

**BUILDING 24 SEISMIC CORRECTION AND ADDITION**

**Location**

**VAMC FRESNO, CA**

**Project Number**

**570-215**

**Building Number**

**24**

**Drawing Number**

**ES002**

**Dwg. Iss. of 160**

**Office of Construction and Facilities Management**

**Department of Veterans Affairs**