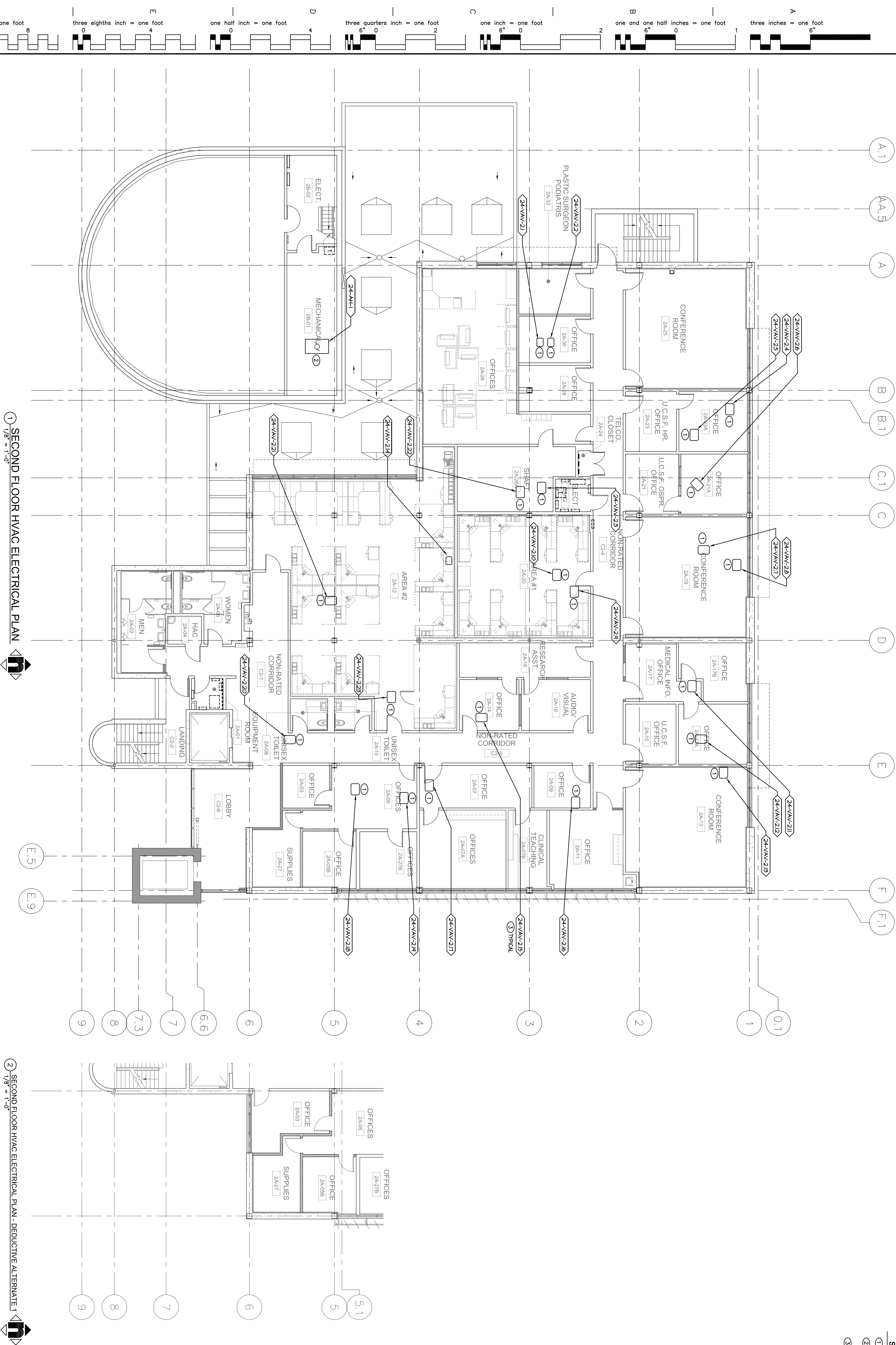
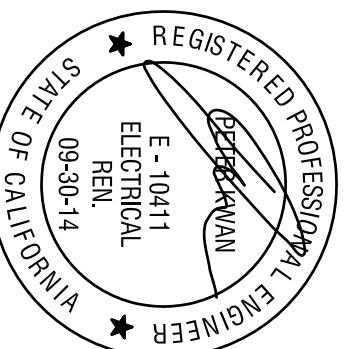


## SECOND FLOOR HVAC ELECTRICAL PLAN NOTES

- ① NEW VAY BOX TO REPLACE EXISTING. RECONNECT EXISTING CONTROL WIRING.
- ② NEW AIR HANDLER MOTORS TO REPLACE EXISTING. DISCONNECT EXISTING ELECTRICAL. CONNECT NEW MOTORS TO EXISTING POWER WIRING.
- ③ TYPICAL: DENOTE MECHANICAL UNIT IDENTIFICATION, REFER TO SCHEDULES ON SHEETS Mh600 & Mh601.

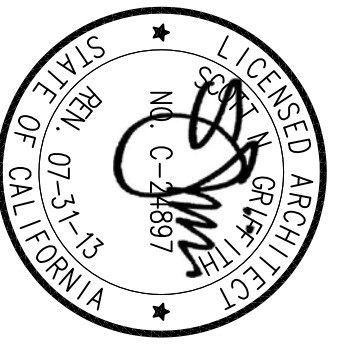


## CONSULTANTS:



**LP Consulting  
Engineers, Inc.**

895 W. Ashlan Ave, Suite 101 Clovis, CA 93612  
 p 559-432-1249 - f 559-432-1625  
[www.lpengineers.com](http://www.lpengineers.com)



**ARCHITECT/ENGINEERS:**

---

**HMC** Architects

1827 E. FFA Avenue, Suite 103 | Fresno, CA 93720  
T 559.562.4444 | [www.hmcarchitects.com](http://www.hmcarchitects.com)

ARCHITECT/ENGINEERS

**Drawing Title**  
**SECOND FLOOR**  
**HVAC ELECTRICAL PLAN**

**Approved: Project Director**

Project Title	
BUILDING 24 SEISMIC CORRECTION AND ADDITION	
Location	
VAMC FRESNO, CA	
Date	Checked
March 12 2013	PK

Project Number	570-215
Building Number	24
Drawing Number	ES204

**Office of  
Construction  
and Facilities  
Management**