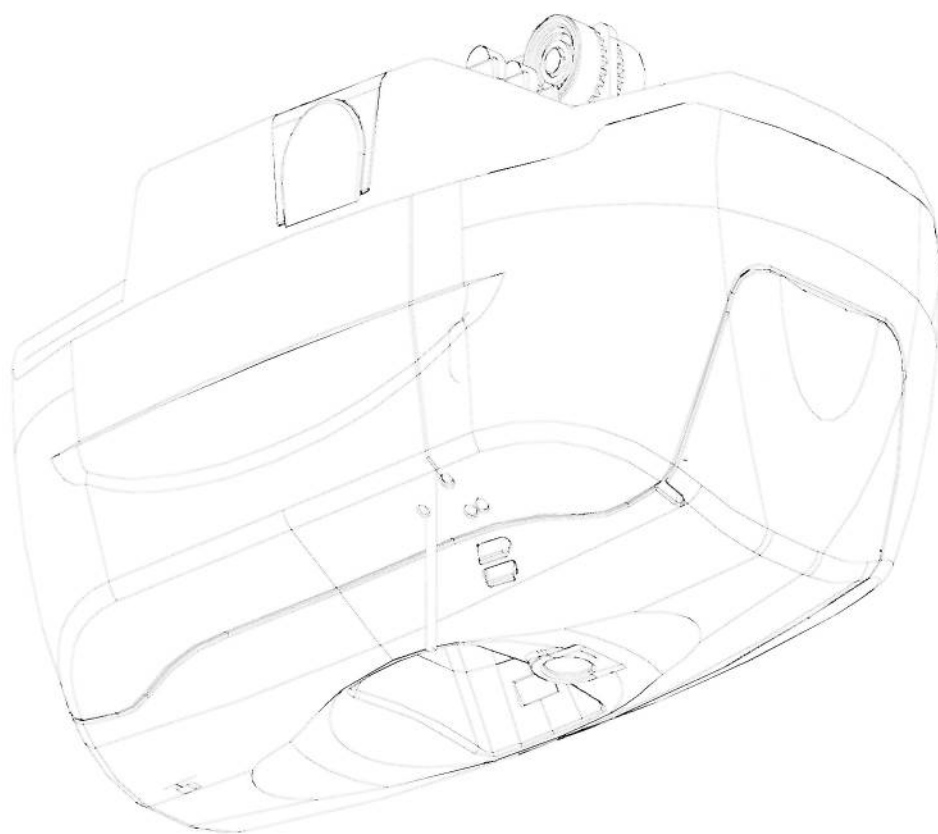


MAXI SKY 600

PARTS LIST

MAXI SKY 600

CEILING LIFT SYSTEM



WARNING

THIS INFORMATION WAS FURNISHED THROUGH THE COURTESY OF THE MANUFACTURER. IT IS TO BE CONSIDERED **PROPRIETARY AND CONFIDENTIAL**. THE DEPARTMENT OF VETERANS AFFAIRS HAS SECURED LIMITED COPYRIGHT RELEASE FOR REPRODUCTION AND DISTRIBUTION OF THIS INFORMATION WITHIN ITS HEALTH CARE FACILITIES FOR USE IN OPERATING AND SERVICING EQUIPMENT BY VA PERSONNEL ONLY. THIS MATERIAL **MAY NOT** BE CIRCULATED OUTSIDE THE VA AND **MAY NOT** BE USED FOR ANY OTHER PURPOSE WITHIN VA.

THE GENERAL COUNSEL HAS DETERMINED THAT THIS MATERIAL **CANNOT BE VIEWED BY THIRD-PARTY VENDORS** WHO MIGHT SERVICE VA OWNED EQUIPMENT. IF A VA MEDICAL FACILITY CONTRACTS FOR MAINTENANCE AND REPAIR SERVICES FROM OTHER THAN THE ORIGINAL MANUFACTURER OR A DESIGNATED REPRESENTATIVE, THE CONTRACTOR WILL BE FULLY RESPONSIBLE FOR OBTAINING ALL TECHNICAL DOCUMENTATION NECESSARY TO FULFILL CONTRACTUAL OBLIGATIONS.

VHA Center for Engineering & Occupational Safety and Health
1 Jefferson Barracks Drive, Building 65
St. Louis, MO 63125-4181
(314) 894-6100



Center for Engineering & Occupational Safety and Health
Department of Veterans Affairs

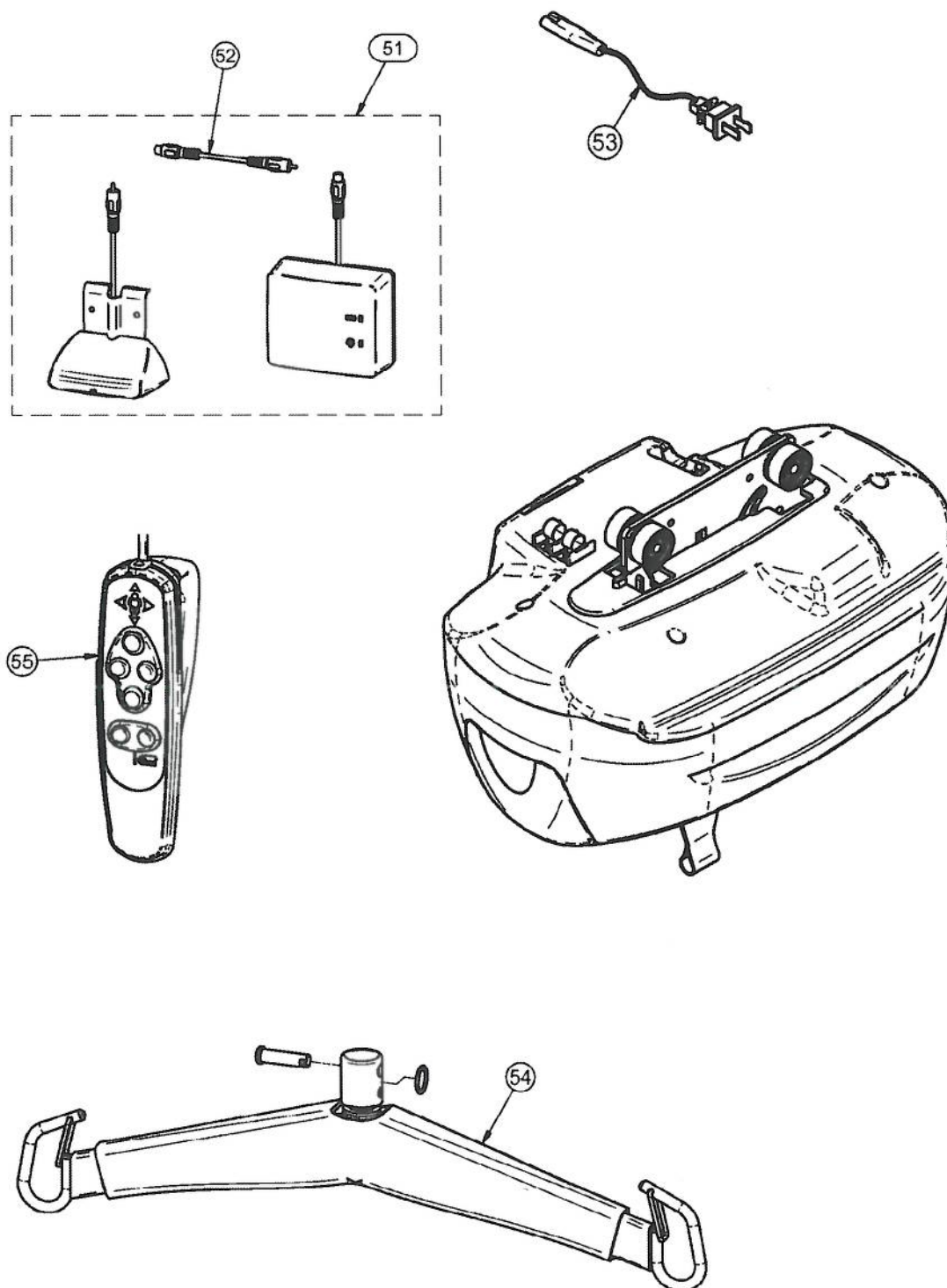
THIS IS THE BEST POSSIBLE FILE WE ARE ABLE TO
GENERATE. SOME FILES INCLUDE OVER-SIZED
SCHEMATICS WHICH REQUIRE PRINTING ON A LARGE
FORMAT PRINTER FOR A FULL SCALE IMAGE.

IF YOU REQUIRE ASSISTANCE, PLEASE CONTACT US
AT:

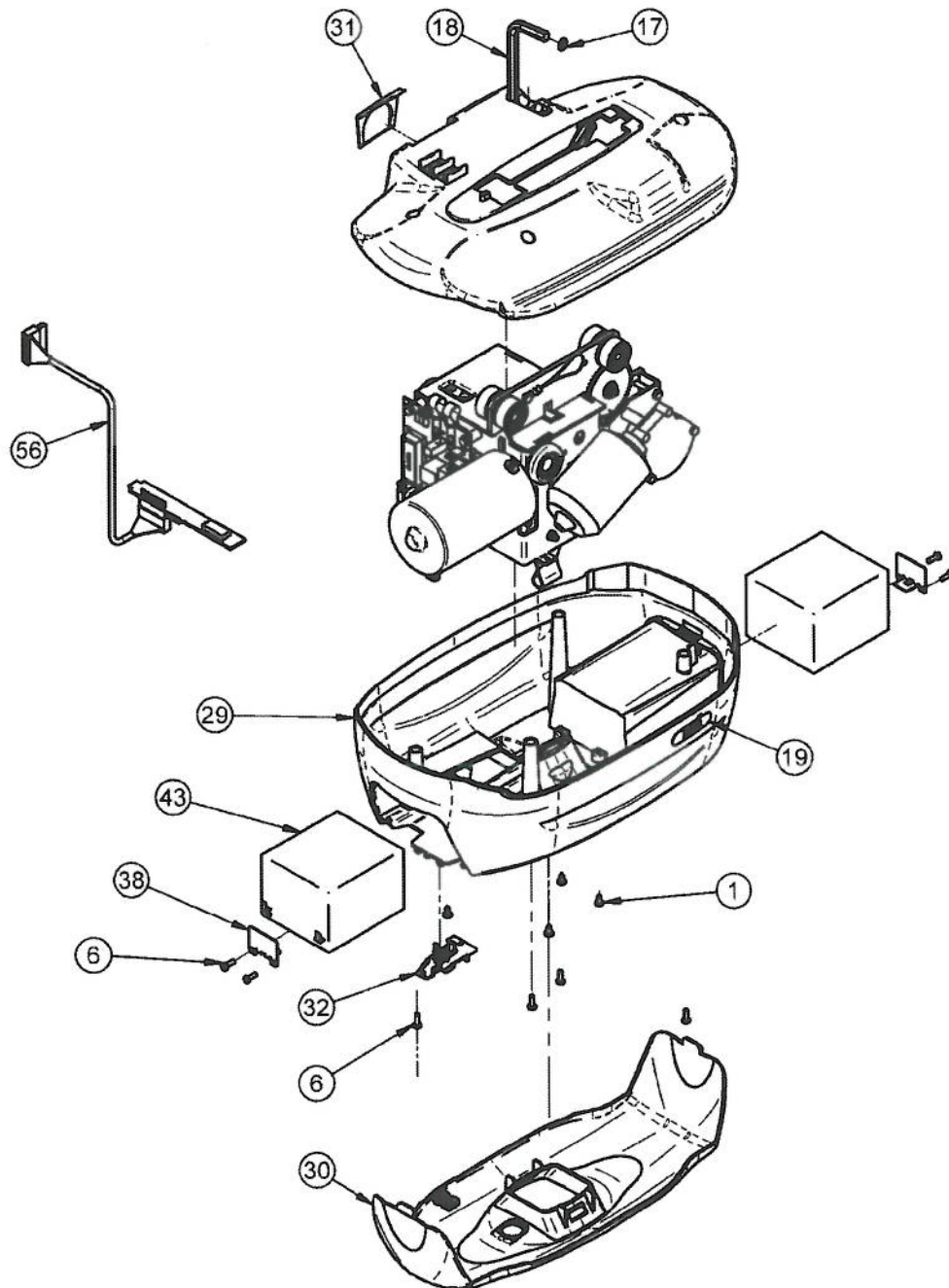
314.894.6100 – Voice
314.894.6157 – Fax

#1 Jefferson Barracks Drive
Building 65
St. Louis, Missouri 63125
vaww.ceosh.med.va.gov

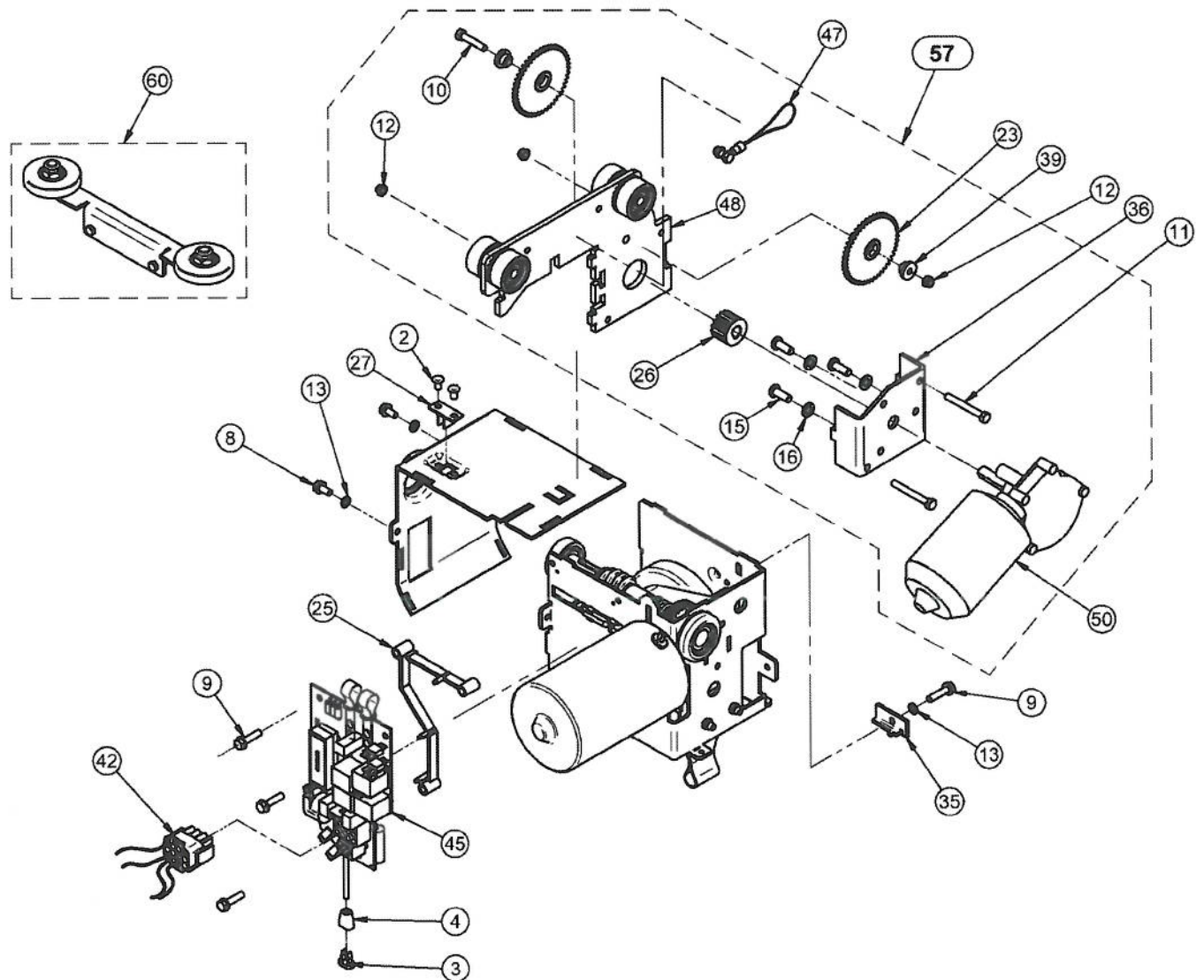
EXPLODED VIEW OF PRODUCT AND PARTS LIST



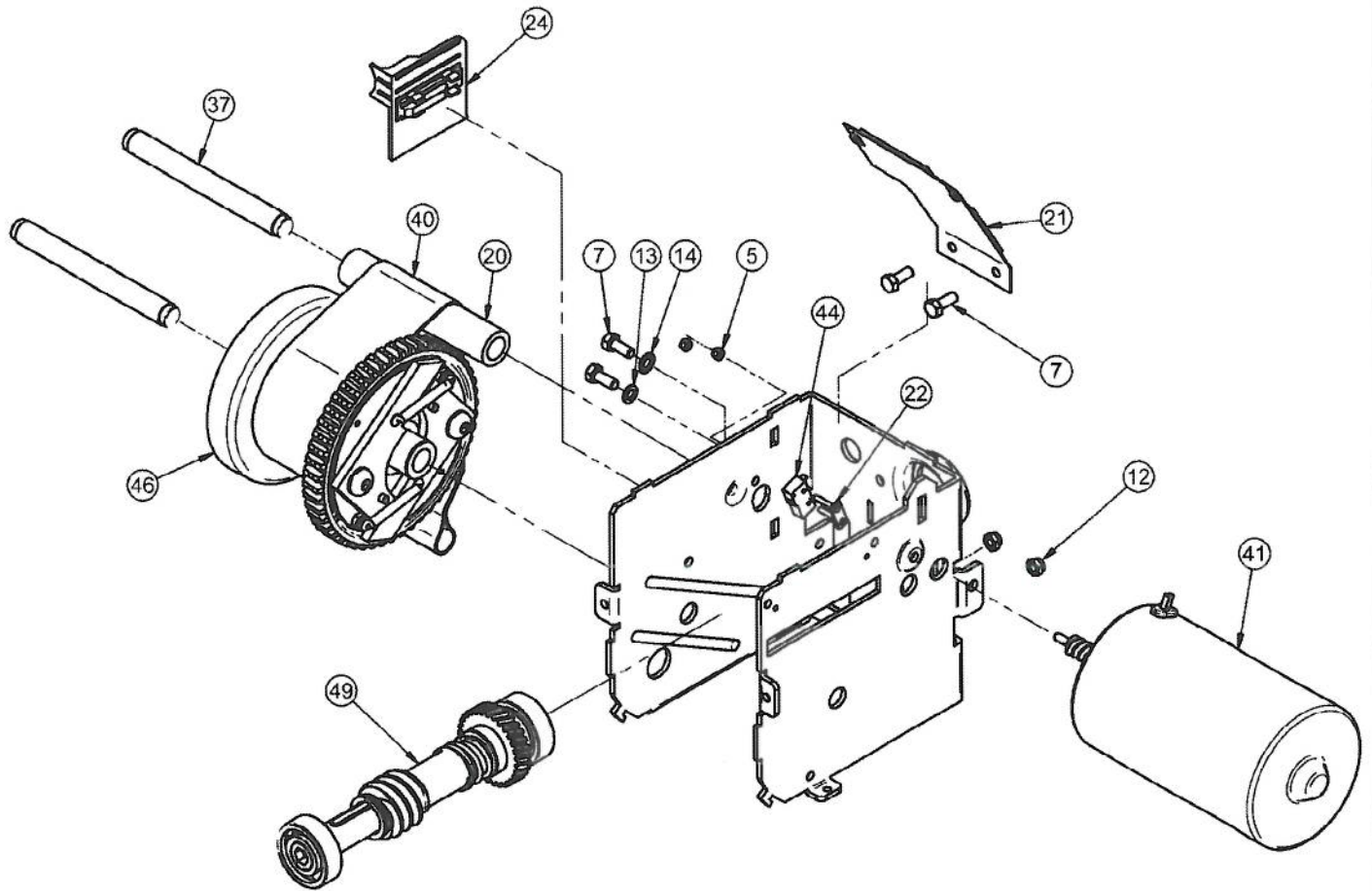
PARTS LIST



PARTS LIST



PARTS LIST



PARTS LIST

ITEM #	PART #	DESCRIPTION	QTY
1	000.00635	TAP SCREW ST4.2 X 9.5 TORX	4
2	000.00890	RIVET 3/16" 0-1/8 ALUMINIUM	2
3	000.01370	CORD END "INSERT"	1
4	000.01375	CORD END "SHEATH"	1
5	000.01970	LOCKNUT M2.5 ZINC	2
6	000.02480	TAP SCREW PLASTITE 4.0 X 12	8
7	000.02550	SCREW M5 X 12 HEX ZINC	4
8	000.02562	SCREW M5 X 10 TAPTITE ZINC	2
9	000.02590	SCREW M5 X 20 TAPTITE ZINC	4
10	000.02610	SCREW M5 X 25 HEX ZINC	1
11	000.02655	SCREW M5 X 40 HEX ZINC	2
12	000.02800	LOCKNUT M5 ZINC	5
13	000.02900	LOCKWASHER M5 ZINC	4
14	000.02915	STARWASHER M5 ZINC	1
15	000.03105	SCREW M6 X 16 BUTTON ZINC	3
16	000.03420	LOCKWASHER M6 ZINC	3
17	000.03950	O-RING 8MM - 2MM CORE	1
* 18	000.03975	ALLEN KEY 8MM SHORT	1
19	001.14050.33	STICKER "MAXI SKY 600"	2
20	200.14060	MAXI SKY 600 - STRAP ROLLER	1
21	200.14070	MAXI SKY 600 - LIMIT PLATE	1
22	200.1409	MAXI SKY 600 - LIMIT FIXATION BRACKET	1
23	200.14210	MAXI SKY 600 - IDLER 46 TOOTH	2
24	200.14230	MAXI SKY 600 - CBLM PLATE	1
25	200.14240	MAXI SKY 600 - PCB SUPPORT	1
26	200.14250	MAXI SKY 600 - LR MOTOR GEAR	1
27	200.14260	MAXI SKY 600 - SSRS ENABLER	1
28	200.14500.33	MAXI SKY 600 - TOP SHELL	1
29	200.14510.33	MAXI SKY 600 - MAIN SHELL	1
30	200.14520.33	MAXI SKY 600 - PANEL	1
	700.14560.33	MAXI SKY 600 - PANEL ASSY FOR INFRARED	-
31	200.14530.33	MAXI SKY 600 - TOOL DOOR	1
32	200.14540	MAXI SKY 600 - REPLACEMENT BUTTON	1
33	203.14000	MAXI SKY 600 - FRAME "U" SHAPE	1
34	203.14010	MAXI SKY 600 - FRAME TOP PART	1
35	203.14030	MAXI SKY 600 - LOCK TROLLEY	1
36	203.14040	MAXI SKY 600 - LR MOTOR PLATE	1
37	203.14050	MAXI SKY 600 - 12MM SHAFT	2
38	203.14080	MAXI SKY 600 - BATTERY SUPPORT	2
39	203.14220	MAXI SKY 600 - BUSHING IDLER	2
* 40	362.14000	MAXI SKY 600 - STRAP	1
41	400.14000	MAXI SKY 600 - VERTICAL MOTOR	1
42	402.00032	MAXI SKY 600 - WIRE KIT	1
* 43	403.10500	BATTERY 12V 5Ah	2

PARTS LIST

	44	460.00005	LIMIT SWITCH TERMINAL 0.110	1
*	45	492.00035-3	Maxi Sky 600 (600 LBS) MAIN BOARD	1
	45	492.00035-7	Maxi Sky 600 (600LBS) MAIN BOARD FOR INFRARED	
	46	700.13350	DRUM 50MM ALUMINIUM WITH STRAP	1
*	47	700.14015	MAXI SKY 600 ANTISTATIC KIT	1
	48	700.14020	MAXI SKY 600 TROLLEY 2FB KWIKTRAK	1
	49	700.14100	MAXI SKY 600 SHAFT ASSY	1
	50	E0006	GEARMOTOR	1
*	51	700.15500	MAXI SKY 600 - KWIKTRAK CHARGER	1
	52	402.15505	MAXI SKY 600 - CHARGER EXTENSION	1
*	53	402.00001	CLASS 2 CHARGER POWER CORD (UL)	1
		402.00002	CLASS 2 CHARGER POWER CORD (JP)	-
		402.00003	CLASS 2 CHARGER POWER CORD (CE)	-
		402.00004	CLASS 2 CHARGER POWER CORD (AU)	-
		402.00005	CLASS 2 CHARGER POWER CORD (UK)	-
	54	700.05495.33	MAXI SKY 600 - CARRY BAR WITH LOGO	1
		000.00905	CLEVIS PIN $\phi 7/16"$ X 1 21/32"	
		000.00921	SPLIT RING	-
		361.05495.33	MAXI SKY 600 CARRY BAR PADDING WITH LOGO	-
*	55	700.13600.33	MAXI SKY 440 -2 BUTTONS HAND CONTROL	1
		700.13640.33	MAXI SKY 600-1000 - INFRARED 6 BUTTONS HAND CONTROL	-
		700.13650.33	MAXI SKY 600- 1000 - 6 BUTTONS HAND CONTROL	-
	56	492.00038	MAXI SKY 600 INFRARED RECEIVER	1
	57	700.14025	MAXI SKY 600 TROLLEY 4FB KWIKTRAK	-
	58	000.01960	SCREW M2.5 X 12 ZINC	-
	59	000.01970	LOCKNUT M2.5 ZINC	-
	60	700.14900	GUIDING WHEEL KIT FOR RAIL	-

OTHER PARTS

*		000.00001	AMP PIN EXTRACTOR	-
*		P8100	FOOD GRADE TYPE GREASE	-
		001.14150.33	MAXI SKY 600 USER MANUAL	-

*** We recommend to always keep the parts identified by an asterisk in inventory:**

At least 1 of each or 1 per 100 units