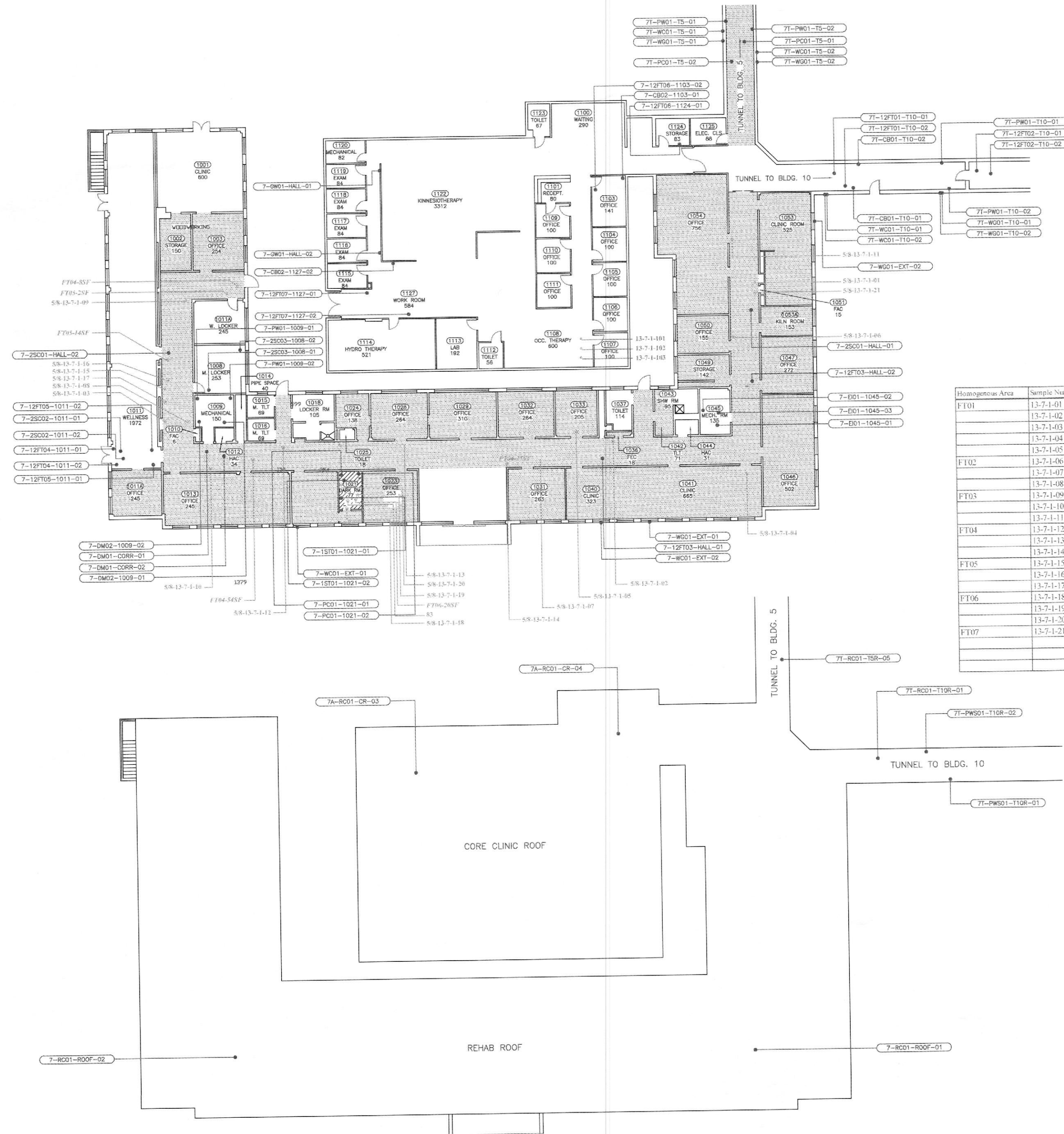


RFI VA246-13-B-0628 B7 Project

1. Is there lead Paint in Bldg 7 in associated work areas?
NO lead paint in area
2. Who will remove and store work out equipment in 1011 Wellness?
The VA will remove and store Equipment from the Wellness Center. A notice will be required a several weeks prior notice.
3. Will contractor be responsible for removing floor mounted toilets, the associated notes only indicate wall mounted accessories?
The contractor is responsible for the removal and reinstallation of the water closets, lavatories etc... in each restroom or bathroom.
4. Will VAMC remove low voltage items (fire alarm associated items, wireless devices, ect.) in ACT?
This will be responsibility of the contractor to remove from ceiling and leave intact so not disrupt services for each item.
5. Who is responsible for removal and storage of furniture and equipment in common areas such as the front entrance and corridors?
The VA will remove all furniture as required
6. Room 1011 shows that it is to have new flooring installed. Has this area been tested for asbestos and if so, is there a report for this area?
There is no asbestos mastic in the room 1011. See attached drawing. "A"
7. On the plans, pg. 3, corridor 1 is listed three times. Are all three areas corridor 1 or has this been mislabeled?
Drawing is correct all indicate the entire area as Corridor 1
8. Handrail is not listed for corridor 1. Is this correct or does corridor 1 get handrails also?
Corridor 1 is to get Handrail. This was just left off the finish schedule.
9. Corridor 2 is not listed on page 3 of the drawings.
It is located on the inside of the wellness center the, small section with VP 1 and VP 2 flooring. See drawing "B"
10. For page 2R of the drawings, can plans be issued with room numbers to determine specific sample areas for asbestos?
Page 2R is shown with the area and room number of the specific area of the samples taken. The area shown is the only area that is being removed
11. On page 2R, Sample #'s 13-7-1-04, 13-7-1-05, 13-7-1-18, 13-7-1-19, and 13-7-1-20 are not indicated on the plans. Can you show where these sample numbers are located so that abatement can be figured accurately?
Those are offices which is not included in the scope of the abatement. The only abatement is to be in the main corridor and the two little corridors.



AREAS SAMPLED JANUARY 2003
NON-ASBESTOS-CONTAINING MATERIAL

BLDG. 7
12FT03 12"x12" BLUE FLOOR TILE AND TAN MASTIC
12FT04 12"x12" BLACK WITH GRAY FLOOR TILE AND TAN MASTIC
12FT05 12"x12" WHITE FLOOR TILE AND MASTIC
12FT06 12"x12" WHITE WITH GRAY FLOOR TILE AND MASTIC
12FT07 12"x12" AQUA FLOOR TILE AND MASTIC
25C01 2"x2" WORMHOLE/PINHOLE CEILING PANEL
25C02 2"x2" PINHOLE/WORMHOLE CEILING PANEL
25C03 2"x2" ROUGH FINISH CEILING PANEL
DM01 YELLOW DUCT MASTIC
DM02 GREEN DUCT MASTIC
15T01 1"x1" SUSPENDED SMOOTH CEILING TILE
GW01 DRYWALL JOINT COMPOUND
EI01 PIPE ELBOW INSULATION
PC01 PLASTER CEILING
PW01 PLASTER WALL
WG01 WINDOW GLAZING
WC01 WINDOW CAULKING
CB01 BLACK COVEBASE MASTIC
CB02 TAN COVEBASE MASTIC
RC01 ROOF CORE

TUNNEL TO BLDG. 5
PW01 PLASTER WALL
PC01 PLASTER CEILING
WG01 WINDOW GLAZING
WC01 WINDOW CAULKING
RC01 ROOF CORE

TUNNEL TO BLDG. 10
12FT01 12"x12" WHITE WITH GRAY FLOOR TILE AND MASTIC
12FT02 12"x12" GRAY FLOOR TILE AND MASTIC
CB01 TAN COVEBASE MASTIC
PW01 PLASTER WALL
WG01 WINDOW GLAZING
RC01 ROOF CORE
PWS01 PARAPET WALL SEAM SEALER

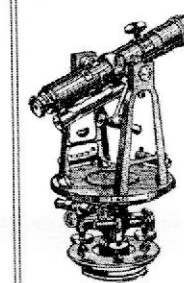
SAMPLE IDENTIFICATION

(S-WC01-EXT-01) NON-ASBESTOS-CONTAINING MATERIAL

Homogenous Area	Sample Number	Sample Description	Locations	Results
FT01	13-7-1-01	White with Brown Fleck FT/ Black Mastic	Hall o/s RM 1051	<1 CH-Tile, 3% CH-Mastic
	13-7-1-02	White with Brown Fleck FT/ Black Mastic	Hall o/s RM 1036	<1 CH-Tile, 3% CH-Mastic
	13-7-1-03	White with Brown Fleck FT/ Black Mastic	Hall o/s RM 1007	<1 CH-Tile, 3% CH-Mastic
	13-7-1-04	White with Brown Fleck FT/ Black Mastic	Office 1041	<1 CH-Tile, 3% CH-Mastic
FT02	13-7-1-05	White with Brown Fleck FT/ Black Mastic	Office 1033	<1 CH-Tile, 3% CH-Mastic
	13-7-1-06	Green with Dark Green and White Fleck FT/ Black Mastic	Hall o/s RM 1050	2% CH-Mastic
	13-7-1-07	Green with Dark Green and White Fleck FT/ Black Mastic	Hall o/s RM 1031	3% CH-Mastic
	13-7-1-08	Green with Dark Green and White Fleck FT/ Black Mastic	Hall o/s RM 1010	2% CH-Mastic
FT03	13-7-1-09	Blue with Dark Blue and White Fleck FT/ Black Mastic	Hall o/s RM 1001	2% CH-Mastic
	13-7-1-10	Blue with Dark Blue and White Fleck FT/ Black Mastic	Hall o/s RM 1019	2% CH-Mastic
	13-7-1-11	Blue with Dark Blue and White Fleck FT/ Black Mastic	Hall o/s RM 1054	2% CH-Mastic
	13-7-1-12	Light White with Gray Fleck FT/ Black Mastic-PATCH	Hall o/s RM 1015	2% CH-Tile, 3% CH-Mastic
FT04	13-7-1-13	Light White with Gray Fleck FT/ Black Mastic-PATCH	Hall o/s RM 1031	<1 CH-Tile, 3% CH-Mastic
	13-7-1-14	Light White with Gray Fleck FT/ Black Mastic-PATCH	Hall o/s RM 1031	2% CH-Tile, 3% CH-Mastic
	13-7-1-15	Darker White with Brown and Gray Fleck FT/ Black Mastic	Hall o/s RM 1010	<1 CH-Tile, 3% CH-Mastic
	13-7-1-16	Darker White with Brown and Gray Fleck FT/ Black Mastic	Hall o/s RM 1010, By Scale	<1 CH-Tile, 2% CH-Mastic
FT05	13-7-1-17	Darker White with Brown and Gray Fleck FT/ Black Mastic	Hall o/s RM 1010	<1 CH-Tile, 2% CH-Mastic
	13-7-1-18	9"x9" Black with White Fleck FT/ Black Mastic	RM 1021	3% CH-Tile, 3% CH-Mastic
	13-7-1-19	9"x9" Black with White Fleck FT/ Black Mastic	RM 1021	3% CH-Tile, 3% CH-Mastic
	13-7-1-20	9"x9" Black with White Fleck FT/ Black Mastic	RM 1021	3% CH
FT07	13-7-1-21	Gold FT/ Black Mastic	Hall o/s RM 1053	2% CH-Mastic

DESCRIPTION	LOCATION
FT01-12"x12" WHITE W/ BROWN FLECK FT/BLACK MASTIC (1-5)	IN ALL OFFICES & ALSO UNDER CARPET
FT02-12"x12" GREEN W/ DARK GREEN & WHITE FLECK FT/BLACK MASTIC (6-8)	
FT03-12"x12" BLUE W/ DARK BLUE & WHITE FLECK FT/BLACK MASTIC (9-11)	
FT04-12"x12" LIGHT WHITE W/ GRAY FLECK FT/BLACK MASTIC (12-14)	
FT05-12"x12" DARKER WHITE W/ BROWN & GRAY FLECK FT/BLACK MASTIC (15-17)	
FT06-9"x9" BLACK W/ WHITE FLECK FT/BLACK MASTIC	
FT07-12"x12" GOLD FT/BLACK MASTIC (21)	

BULK SAMPLE LOCATIONS
BUILDING 7 - REHAB MEDICINE & CORE CLINIC
VA MEDICAL CENTER
SALISBURY, NORTH CAROLINA



HGS ENGINEERING, INC.
1121 NOBLE STREET
ANNISTON, ALABAMA 36201

DRAWING A QUESTION 6

DRAWING B
QUESTION 9

