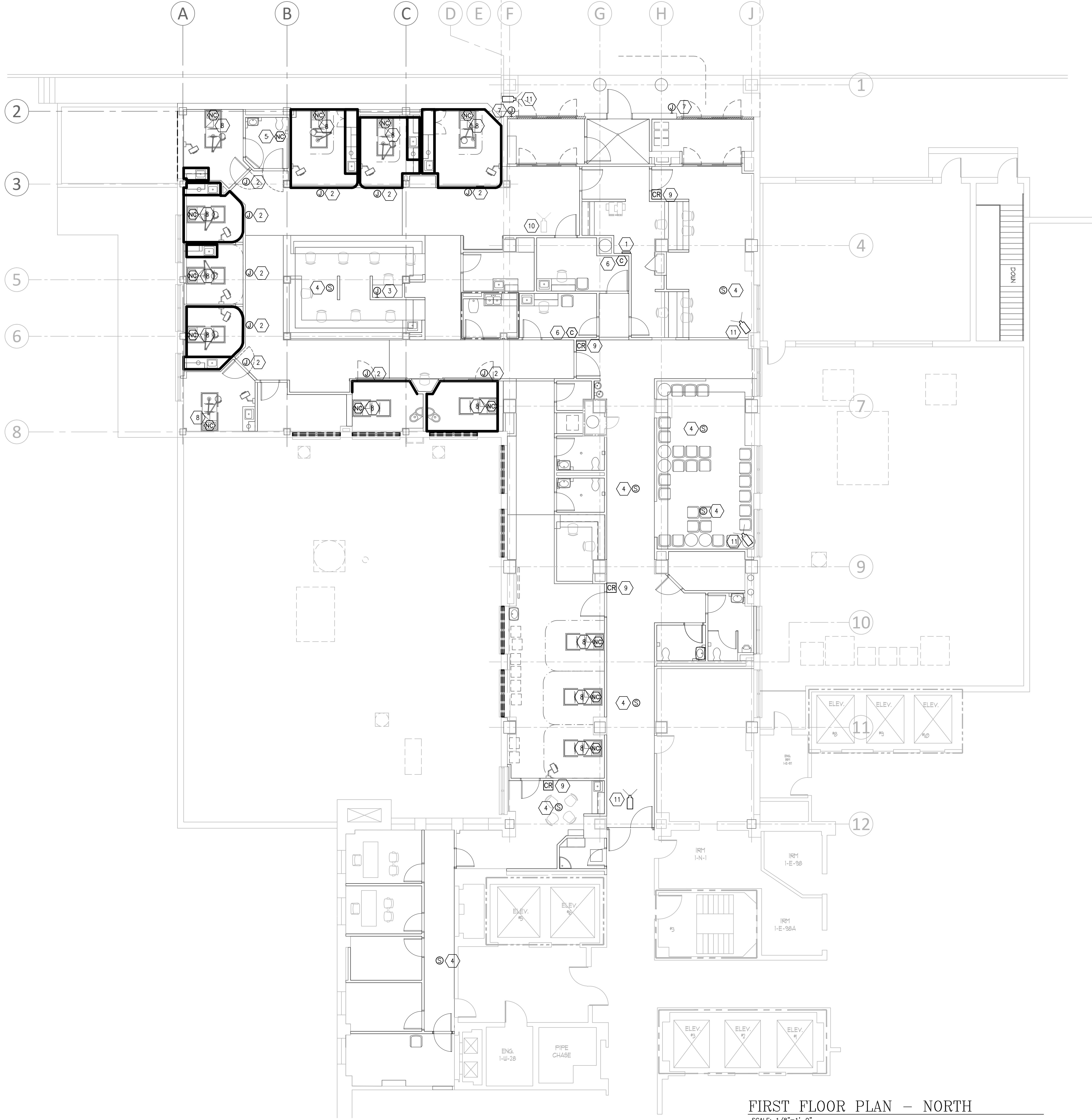


three inches = one foot
one and one half inches = one foot
one inch = one foot
three quarters inch = one foot
one half inch = one foot
three eighths inch = one foot
one quarter inch = one foot
one eighth inch = one foot



FIRST FLOOR PLAN - NORTH

SCALE: 1/8"=1'-0"

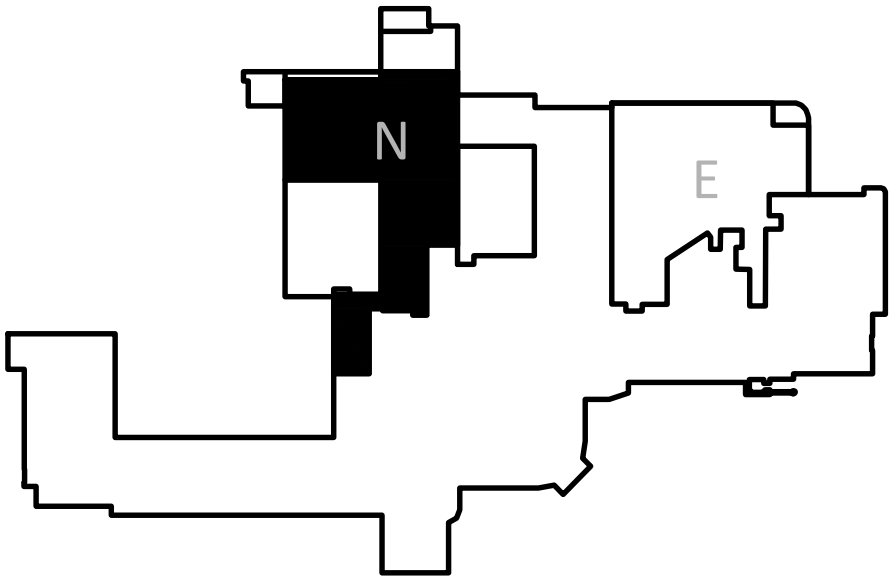
GENERAL NOTES

1. CONTRACTOR TO INSTALL NURSE CALL SYSTEM AND MAKE OPERATIONAL. TIE NEW DEVICES INTO EXISTING HOSPITAL SYSTEM. MATCH NEW DEVICES WITH EXISTING DEVICES.

KEY NOTES

- 1 LOCATION OF NEW NURSE CALL CONTROL CABINET. CONTRACTOR TO TIE NEW PANEL INTO MAIN SYSTEM AT HOSPITAL.
- 2 PROVIDE JUNCTION BOX FOR NEW NURSE CALL CORRIDOR LIGHT ABOVE DOOR TO LIFE SUPPORT ROOM. MOUNT AT 4" ABOVE DOOR FRAME FOR WALL MOUNTED APPLICATIONS. CEILING MOUNT MAY BE REQUIRED. CONNECT TO NEW NURSE CALL CONTROL CABINET.
- 3 PROVIDE JUNCTION BOX FOR NEW NURSE CALL MONITORING STATION FOR NEW EMERGENCY DEPARTMENT. VERIFY ELECTRICAL CONNECTION WITH NURSE CALL VENDOR.
- 4 PROVIDE NEW SPEAKER IN LOCATION SHOWN.
- 5 PROVIDE NEW EMERGENCY CALL STATION AT TOILET IN NEW RESTROOM. MOUNT AT 48" AFF.
- 6 PROVIDE NEW CODE BLUE STATION IN TRIAGE. MOUNT AT 48" AFF.
- 7 PROVIDE PROVISIONS FOR ACCESS TO DOORS VIA PUSHBUTTON.
- 8 PROVIDE NURSE CALL PATIENT STATION AND CODE BLUE STATION IN EXAM HEADWALL UNIT.
- 9 PROVIDE NEW CARD READER FOR ACCESS INTO THE PATIENT AREA. COORDINATE LOCATION WITH HOSPITAL ENGINEER. REFER TO SHEET EA-1 FOR LOCATION OF HIRSCH SYSTEM CARD READER CONTROL PANEL.
- 10 EXISTING SECURITY CAMERA TO BE RELOCATED TO THIS LOCATION.
- 11 CONTRACTOR TO PROVIDE NEW SECURITY CAMERAS. MATCH EXISTING. EXISTING CAMERAS ARE PELCO SARIK FIXED VANDAL MINI DOME, 1M18-V, INDOOR, 1.3 MEGAPIXEL HD DIGITAL CAMERA. TIE NEW CAMERAS INTO EXISTING HOSPITAL CAMERA SYSTEM LOCATED IN 1WS8.

KEYPLAN: FIRST FLOOR



FULLY SPRINKLERED

Scale: AS NOTED

Addendum #1 - Titleblock Revision	04/16/2013
Revisions	Date

CONSULTANTS:

The Estopinal Group
620 Jordan Street, Suite 507
Shreveport, LA 71101
tel. 318.424.3700
fax 318.424.3764



PROJECT MANAGERS AND ENGINEERS:

TNF A VETERAN OWNED COMPANY
3 EXECUTIVE COURT, UNIT 4
SOUTH BARRINGTON, IL 60010

Drawing Title	FIRST FLOOR - NORTH SECURITY/NURSE CALL PLAN
Approved Project Director	

Project Title	RENOVATE ED + PRIMARY CARE
Project Number	667-10-100
Building Number	1N, 1E
Location	SHREVEPORT VAMC 510 EAST STONER AVE
Date	01/09/13
Checked	RM
Drawn	TJH

Drawing Number	E1.N3 Dwg. 95 of 112
----------------	-------------------------

Office of
Construction
and Facilities
Management

Department of
Veterans Affairs