

APPLICATION

The Amsco Examiner 10 Examination Lighting System, available in three configurations, provides cool, color-corrected light for examination, treatment and emergency areas.

DESCRIPTION

Ceiling-mounted fixtures are suspended on a seamless, vertical tube (cut to size by others). The lighthead suspension arm slips into a casting on the lower end of the vertical tube and is secured by a close-fitting hinge pin. The upper end of the vertical tube is welded to a steel ceiling plate. A brushed-aluminum cover is furnished to conceal the plate.

The vertical tube may be cut to length to suit various ceiling heights. STERIS recommends a minimum ceiling height of 8' (2438 mm) to a maximum ceiling height of 11' (3353 mm).

Wall-mounted fixtures are furnished with a predrilled mounting bracket assembly. With this type of mounting, the lighthead may be extended, or, when not in use, the lighthead folds close to the wall. Optional 14" (356 mm) extension available to maximize reach.

Mobile floor stand fixtures are provided with a vertical stand. The stand supports the lighthead suspension arm. The stand is affixed to a sturdy metal base having ball-bearing casters with neoprene wheels. The stand is 67" (1702 mm) high with a 34" (864 mm) base. Mobile floor units are equipped with a 20' (6096 mm) power cord to provide more area coverage.

STANDARDS

Each lighting fixture meets applicable requirements of the following listings and standards, and carries the appropriate symbol:

UL 60601-1 Standard for Medical Electrical Equipment, Part 1: General Requirements for Safety, as certified by Intertek Testing Services, Inc.

CAN/CSA C22.2 No. 601.1-M90 Standard for Medical Electrical Equipment, as certified by Intertek Testing Services, Inc.



(Typical only - some details may vary.)

IEC 60601-1, Medical Electrical Equipment – Part 1: General Requirements for Safety, 1988 (General), Amendment 1, 1991-11, Amendment 2, 1995-03, as certified by Intertek Testing Services, Inc.

IEC 60601-1-2, (1st Edition, 1993-04), Medical Electrical Equipment -Part 1: General Requirements for Safety; Electromagnetic Compatibility – Requirements and Tests (General), as certified by Intertek Testing Services, Inc.

Medical Device Directive (93/42/ EEC)

FDA Good Manufacturing Practices Regulation 21CFR 820 for Medical Devices

FEATURES

State-of-the-art design – 150-watt, quartz-halogen lamp (rated at 500 hours) and dichroic, coated, parabolic reflector. The reflector has a color-correcting cold mirror which reflects a controlled portion of the visible light onto a Pyrex®¹ diffuser. The diffuser smooths, blends and directs the light to the examination site. The cold mirror passes a majority of the heat (from the lamp) up through the vented lighthead cover, away from the examination site.

1. Pyrex® is a registered trademark of Corning Incorporated.

The Selections Checked Below Apply To This Equipment

MODEL

- ☐ Ceiling Mounted
 - ☐ Single
 - ☐ With 14" (356 mm) Horizontal Suspension Arm Extension
 - ☐ Without Horizontal Suspension Arm Extension
 - ☐ Dual – with 14" Horizontal Suspension Arm Extension

- ☐ Wall Mounted
 - ☐ With one 14" (356 mm) Horizontal Suspension Arm Extension
 - ☐ Without Horizontal Suspension Arm Extension
- ☐ Mobile Floor Stand Fixture – 34" (864 mm) Base 67" (1702 mm) Stand

OPTIONS

- ☐ Seismic Design (for Ceiling-mounted Fixtures)

ACCESSORIES

- ☐ One 14" (356 mm) Extension (for Wall or Ceiling-mounted Fixtures)
- ☐ Adapter Plate (to make Burton 4-15/16" bolt circle suitable for Examiner 10)
- ☐ Sterile Handle Kit (One Required for Each Lighthead)
- ☐ 200-240 Volt Transformer

Item _____

Location(s) _____

Glare-reducing construction – glare is blocked by a retro-reflector positioned so as not to interfere with the light pattern.

Easy lamp replacement – no tools are required. One extra lamp is furnished with each fixture.

Smooth, exact positioning – without drifting, accomplished by using positioning ring on the lighthead outer cover. The lighthead is mounted in a movable yoke attached by a swivel to a spring-balanced suspension arm assembly. The swivel allows the yoke to be maneuvered through a wide range of positions. The power ON/OFF switch is on the yoke; the power cord and positioning spring are enclosed in the suspension arm.

An optional 14" (356 mm) long extension for the suspension arm is available for either wall- or ceiling-mounted (single and dual) fixtures. The additional length provides more area coverage and more versatility.

CONSTRUCTION

Exterior parts of the lighthead are made from Lexan®¹. Painted surfaces consist of sprayed-on baked enamel.

CAPABILITIES

Maneuverability

The fixture can move freely throughout its range of maneuverability without drifting when positioned at any point. With the lighthead in the horizontal plane, it is possible to raise or lower the lighthead in a 28" (711 mm) vertical sweep.

Light Color

The color of the light beam is 4400° Kelvin as measured on a Commission International de l'Eclairage chromaticity diagram.

Beam Intensity

The beam intensity in a test field 42" (1067 mm) below the reflector rim is 3200 footcandles (34,444 lumens/m²), nominal.

Area Of Coverage

When in the horizontal plane, a ceiling-mounted lighthead will rotate 360° around the vertical tube; a wall-mounted lighthead, 180° about the suspension arm support pin; and a track-mounted lighthead, 360° around the vertical tube. The maximum radius of this imaginary circle (measured from the

center line of the vertical support member to the center of the lighthead) is:

- 30" (762 mm) for a ceiling-mounted lighthead;
- 45" (1143 mm) for a ceiling-mounted lighthead with optional extension for suspension arm;
- 30" (762 mm) for a wall-mounted lighthead;
- 44" (1118 mm) for a wall-mounted lighthead with optional extension for suspension arm; and
- 58" (1473 mm) for a wall-mounted lighthead.
- 28" (711 mm) for lighthead on a mobile floor stand.

NOTES

1. Ceiling or wall structure must adequately support lighting fixture. See weights and moments listed in chart on page 3. Structure must be able to support an additional maximum 15 lbs (6.8 kg) force for manual adjustment of each lighthead.
2. Mounting plate must be level.
3. Four fasteners are required for each mounting configuration. Use No. 14 wood screws for installation of wall-mounted fixture on wood framing; 1/4" bolts or lag screws for structural installation of wall- or ceiling-mounted fixture. Fasteners for single lightheads must withstand 515 lbs (234 kg) of tension; for dual lightheads - 435 pounds (198 kg) of tension. (Screws, bolts or lag screws not by STERIS.)
4. The lighting fixture must be grounded.
5. Do not mount in a hazardous area where flammable anesthetics are used.
6. Clearance holes in track for 1/2" (12.7 mm) diameter extension bolts, four required. (Bolts not by STERIS.)
7. Light construction permits complete nonstop rotation of arm and lighthead. For clearance, see equipment drawings.
8. Ceiling structure must be capable of supporting 250 lbs (113 kg).

UTILITY REQUIREMENTS

Electricity – Single Lighthead

120V, 50/60 Hz, 1.5A; or 200/220/240V, 50/60 Hz, 1.5A

Electricity – Dual Lighthead

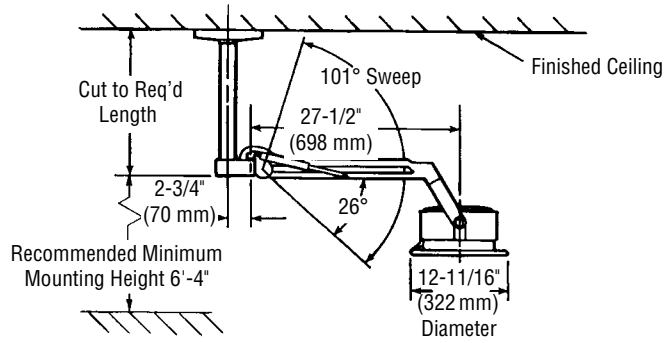
120V, 50/60 Hz, 3A

CUSTOMER IS RESPONSIBLE FOR COMPLIANCE WITH APPLICABLE LOCAL AND NATIONAL CODES AND REGULATIONS.

¹. Lexan® is a registered trademark of SABIC Innovative Plastics.

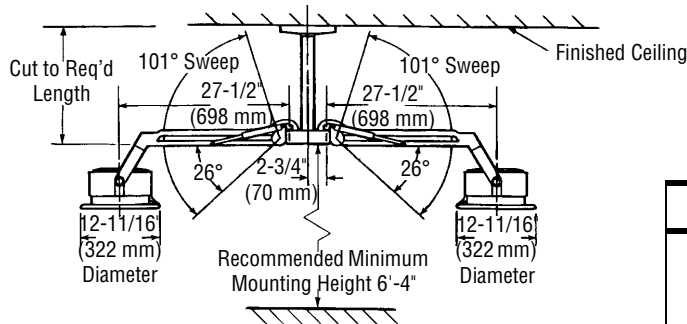
Reference the Following Equipment Drawings for Installation Details	
Equipment Drawing Number	Equipment Drawing Title
056938-103	EXAM 10 DUAL CEILING MOUNT WITH EXTENSION
056938-104	EXAM 10 DUAL CEILING MOUNT
065164-000	EXAM 10 WALL MOUNT
065165-000	EXAM 10 SINGLE CEILING MOUNT
065166-000	EXAM 10 SINGLE CEILING MOUNT WITH EXTENSION
65163-000	EXAM 10 PORTABLE

Single Ceiling-Mounted Fixture*



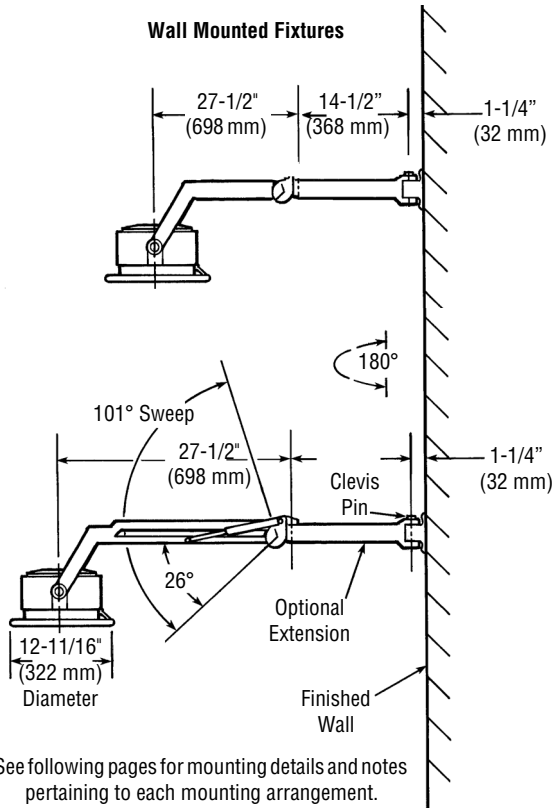
* 8'0" (2438.4 mm) minimum ceiling height to 11'0" (3353 mm) maximum ceiling height.

Dual Ceiling-Mounted Fixture*



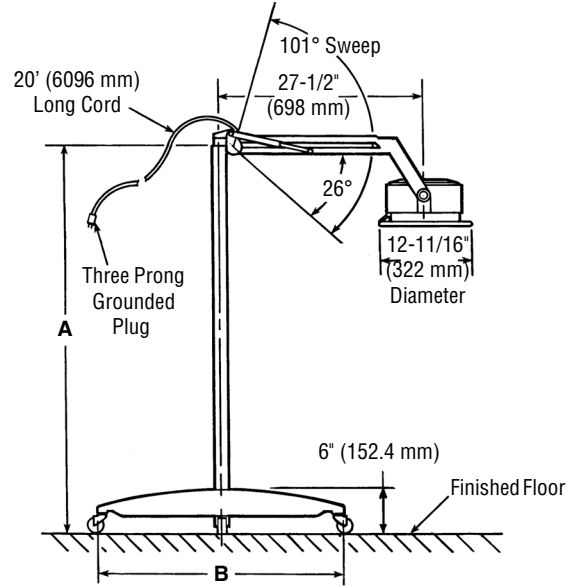
* 8'0" (2438.4 mm) minimum ceiling height to 11'0" (3353 mm) maximum ceiling height.

Wall Mounted Fixtures



See following pages for mounting details and notes pertaining to each mounting arrangement.

Mobile Floor Stand Fixture



MOBILE FLOOR STAND FIXTURE

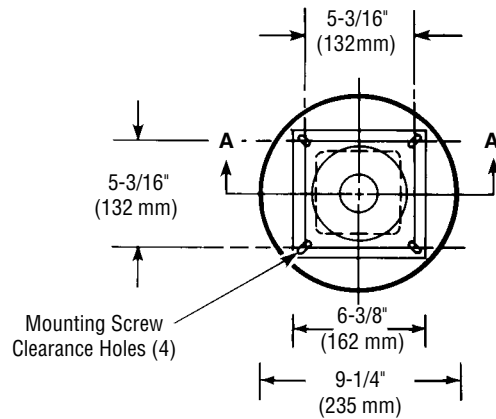
A Stand Height inches (mm)	B Base Size inches (mm)	Approximate Total Weight* lbs (kg)
55 (1397)	28 (711)	41 (18.6)
55 (1397)	34 (864)	55 (25)
67 (1702)	34 (864)	51 (23.2)

Mounting Arrangement	Mounted Weight† lbs (kg)	Moment Force lb-ft (kg-m)
Wall	18 (8.2)	72 (10.0)
Wall w/14" (356 mm) extension	20 (9.1)	116 (16.0)
Single Ceiling	24 (10.9)*	101 (13.9)
Single Ceiling w/extension	27 (12.2)*	146 (20.2)
Dual Ceiling	40 (18.2)*	300 (41.4)
Dual Ceiling w/extension	45 (20.5)*	365 (50.5)

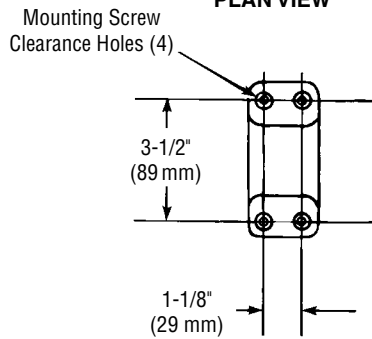
† Includes weight of lighthead(s).

* An additional 13 lbs (5.9 kg) must be added for each lighthead when using the 200-240 Volt transformer accessory.

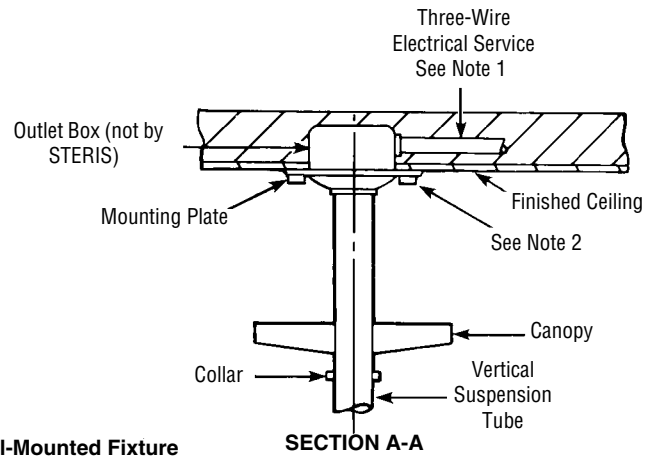
Ceiling-Mounted Fixture



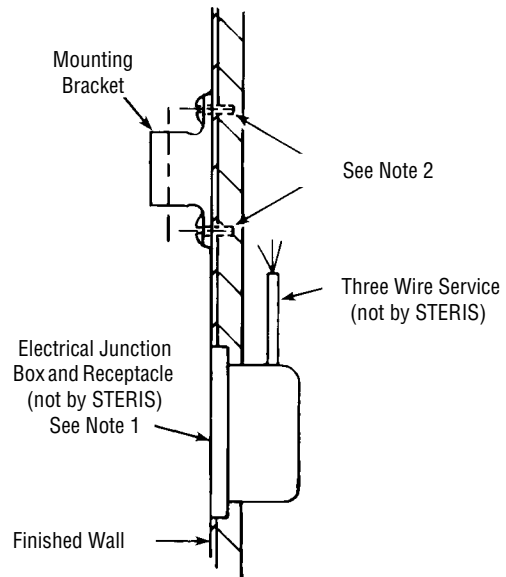
PLAN VIEW



Wall-Mounted Fixture



SECTION A-A



For Further Information, contact:

STERIS®



STERIS Corporation
5960 Heisley Road
Mentor, OH 44060-1834 • USA
440-354-2600 • 800-548-4873
www.steris.com