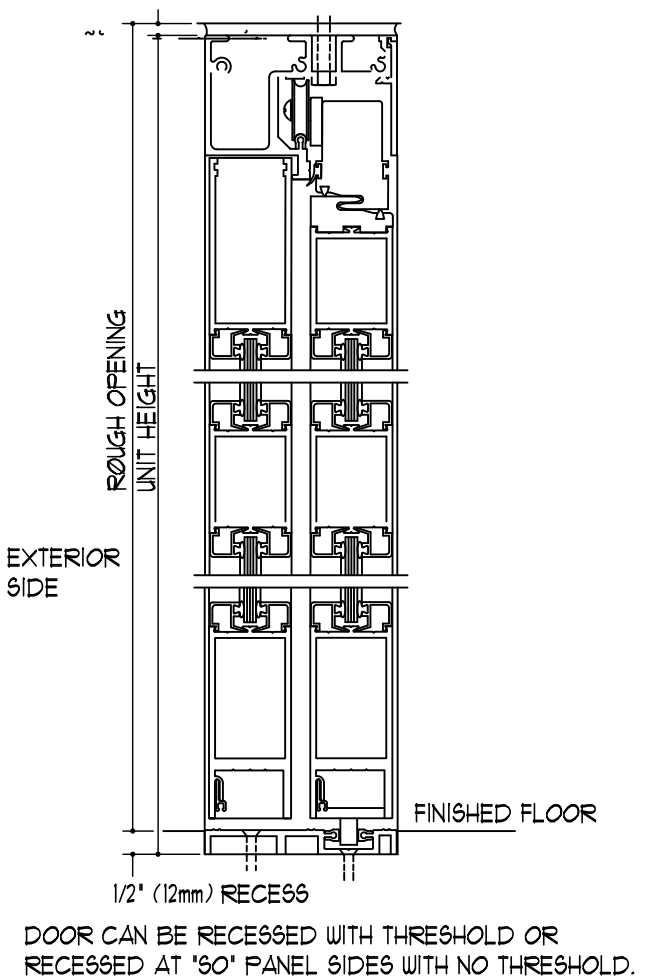
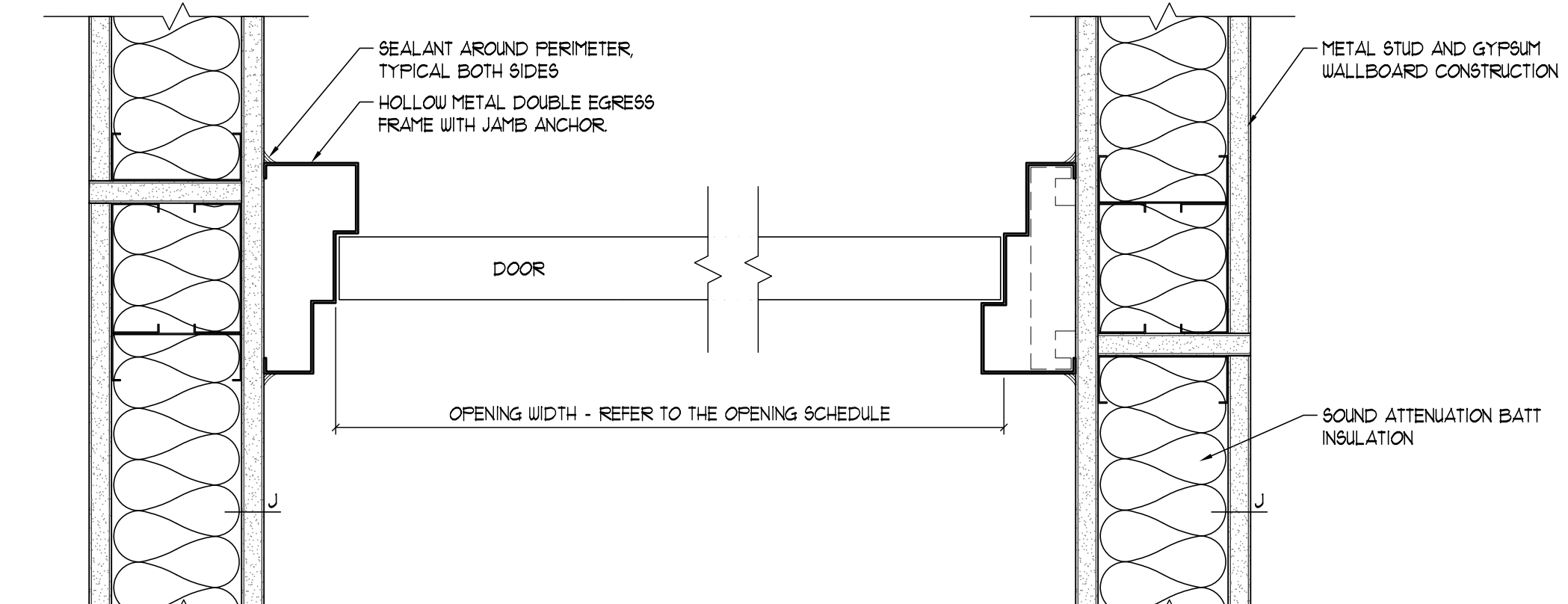


three inches = one foot  
one and one half inches = one foot  
one inch = one foot  
three quarters inch = one foot  
one half inch = one foot  
three eighths inch = one foot  
one quarter inch = one foot  
one eighth inch = one foot

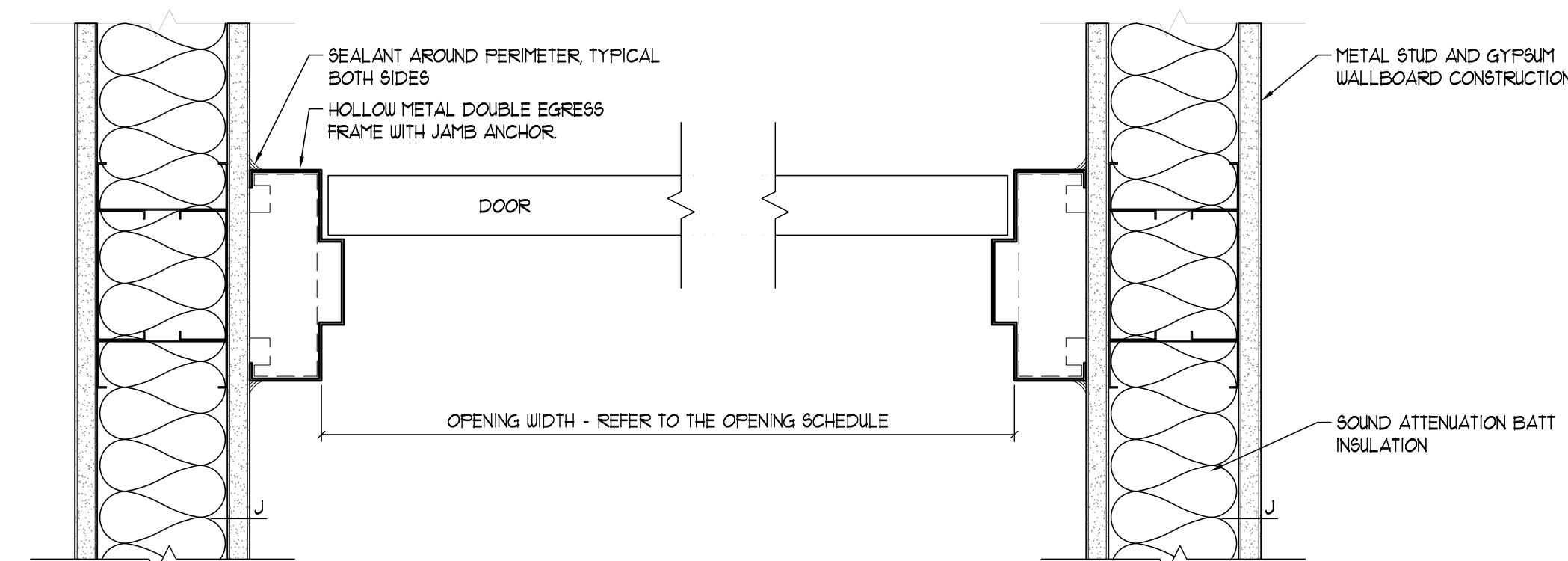
4-17-13 01:57:48 PM cshoppmann  
PROJECT: VASHYASH015-CD ARCH-VA-VASH-015-A1401-Opening Schedules.dwg



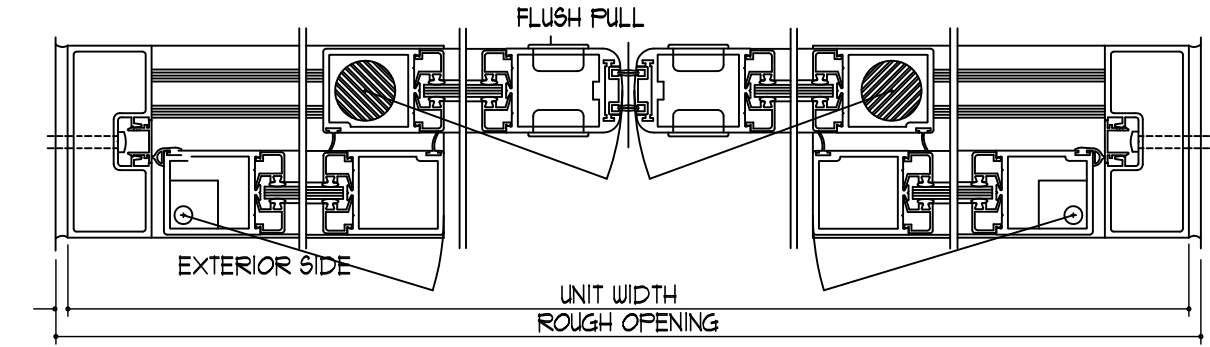
09 EXTERIOR SLIDING DOOR HEAD/SILL DETAIL  
SCALE: 3"=1'-0"



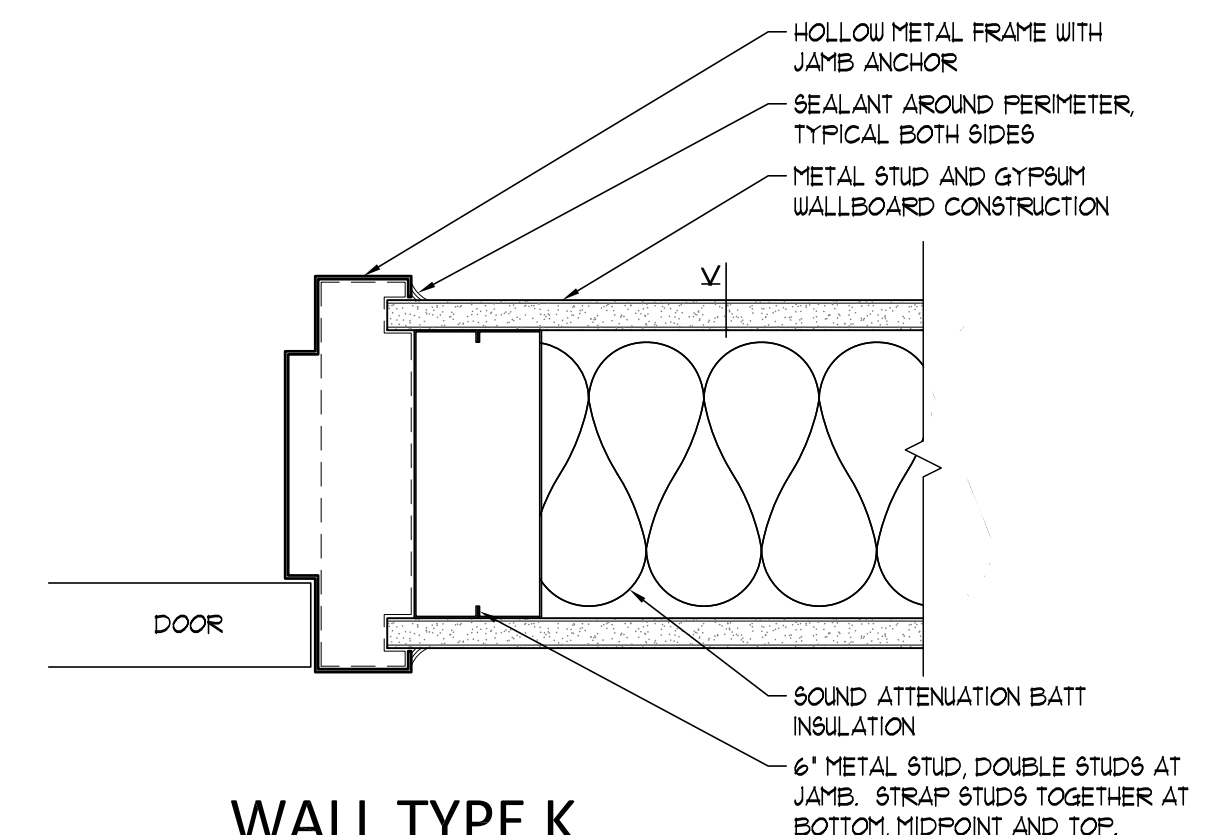
05 WALL TYPE J JAMB - HOLLOW METAL DOUBLE EGRESS FRAME - RATED  
SCALE: 3"=1'-0"



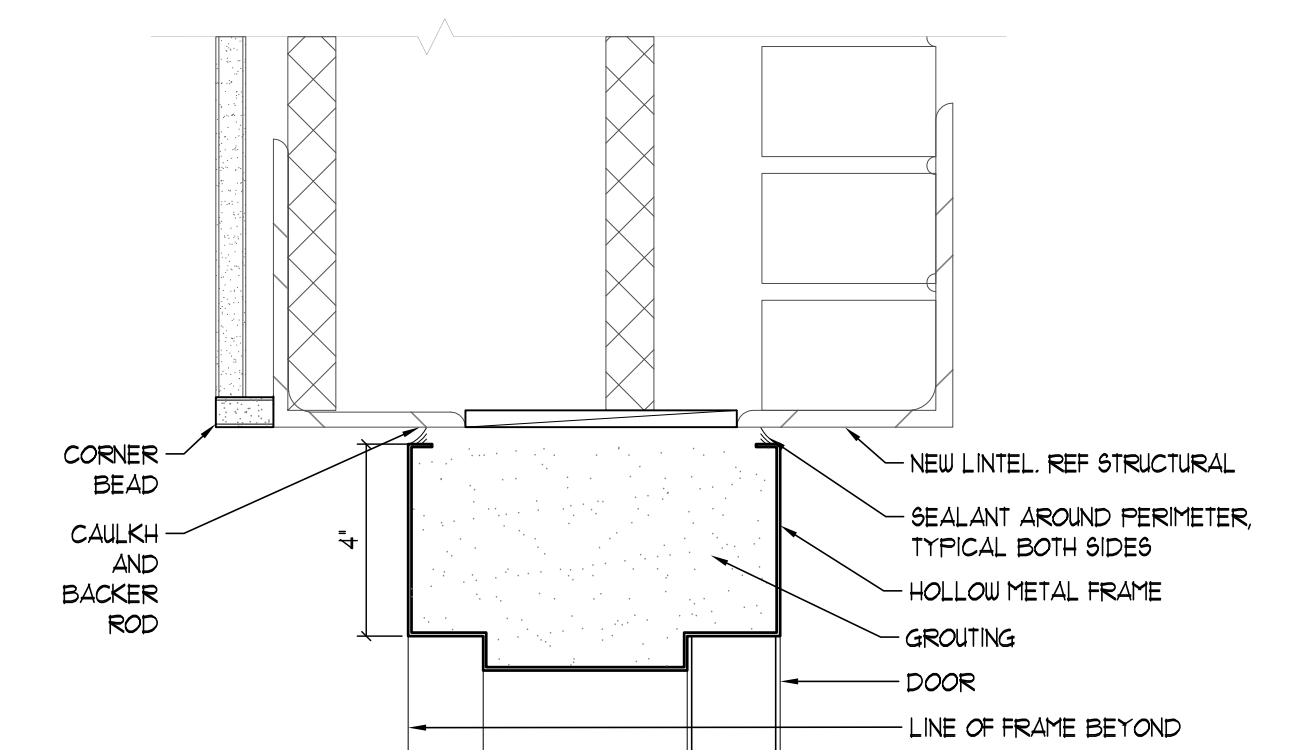
04 WALL TYPE J JAMB - HOLLOW METAL DOUBLE EGRESS FRAME - NON-RATED  
SCALE: 3"=1'-0"



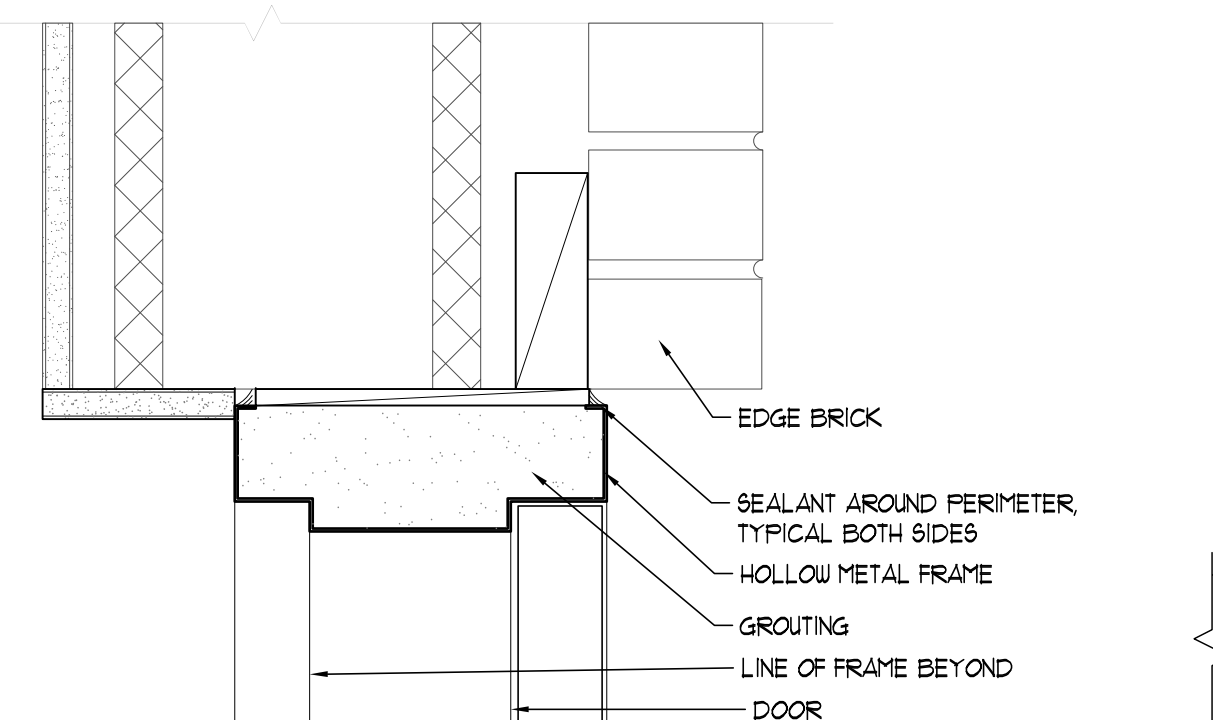
08 EXTERIOR SLIDING DOOR JAMB DETAIL  
SCALE: 3"=1'-0"



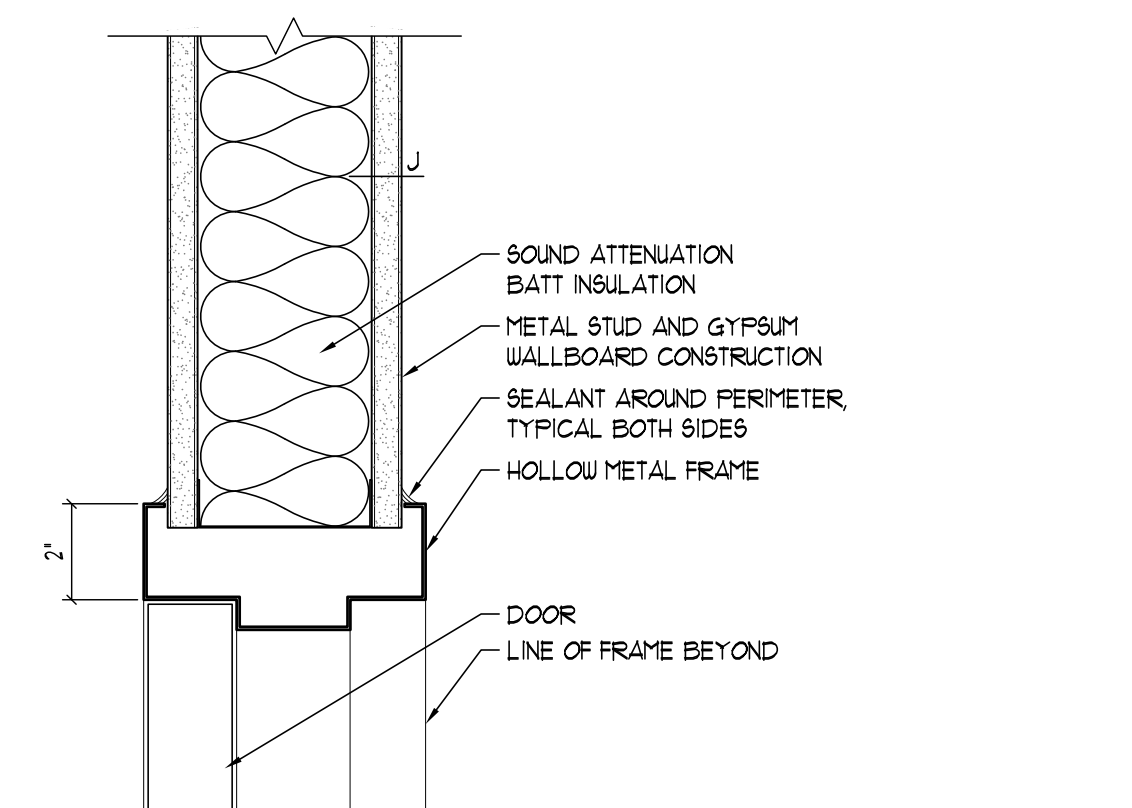
10 WALL TYPE K JAMB - HOLLOW METAL TYPICAL DOOR FRAME  
SCALE: 3"=1'-0"



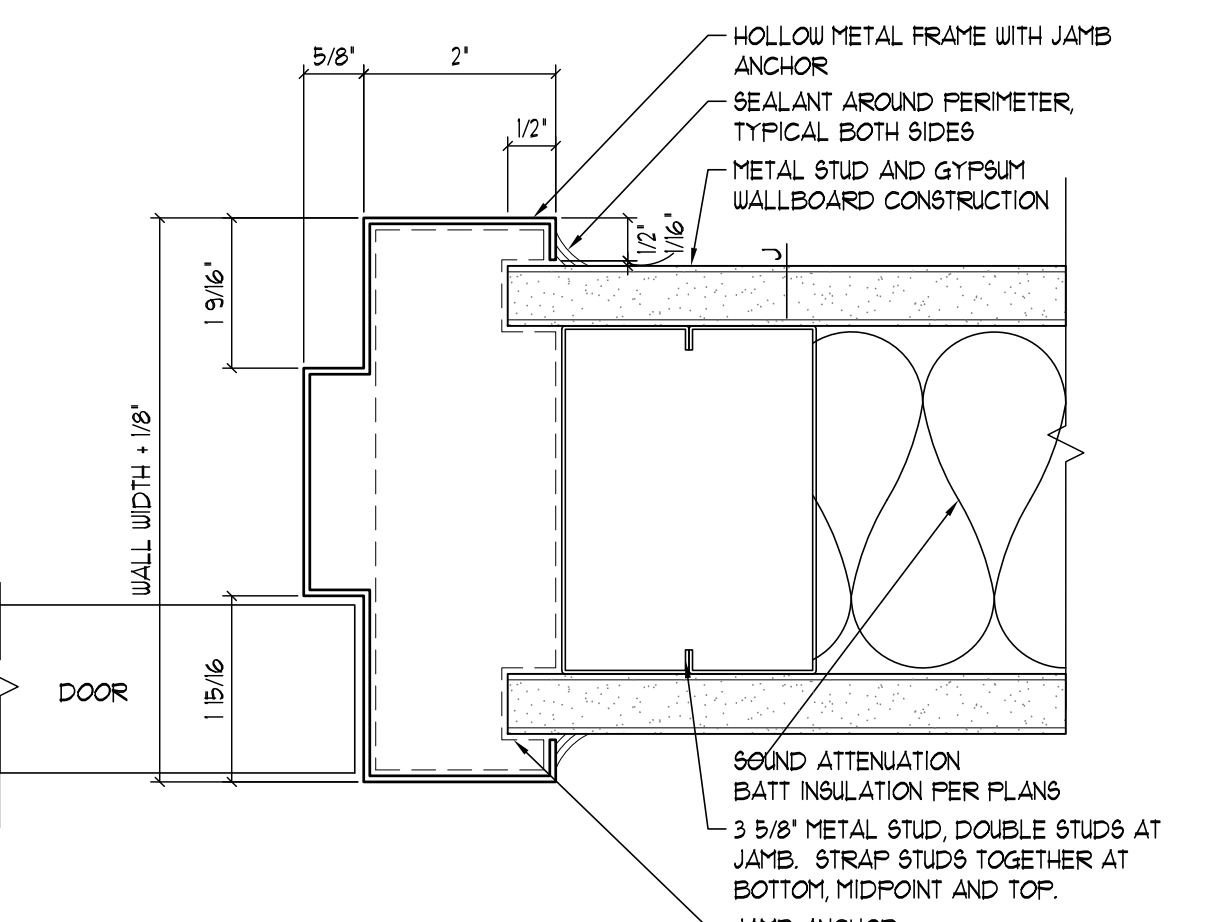
07 HEAD EXTERIOR FRAME  
SCALE: 3"=1'-0"



06 JAMB EXTERIOR FRAME  
SCALE: 3"=1'-0"



03 WALL TYPE J HEAD - HOLLOW METAL TYPICAL DOOR FRAME  
SCALE: 3"=1'-0"



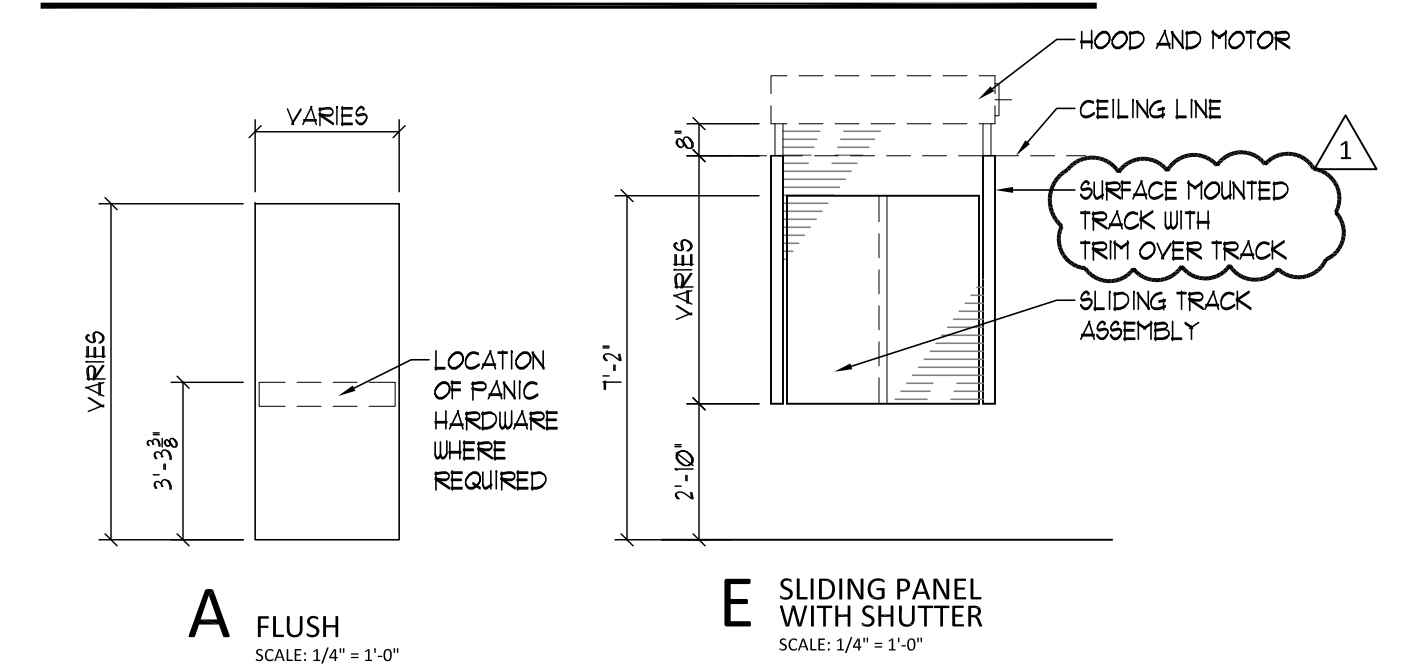
02 WALL TYPE J TYPICAL JAMB - HOLLOW METAL  
SCALE: 6"=1'-0"

01 NOT USED  
SCALE: 3"=1'-0"

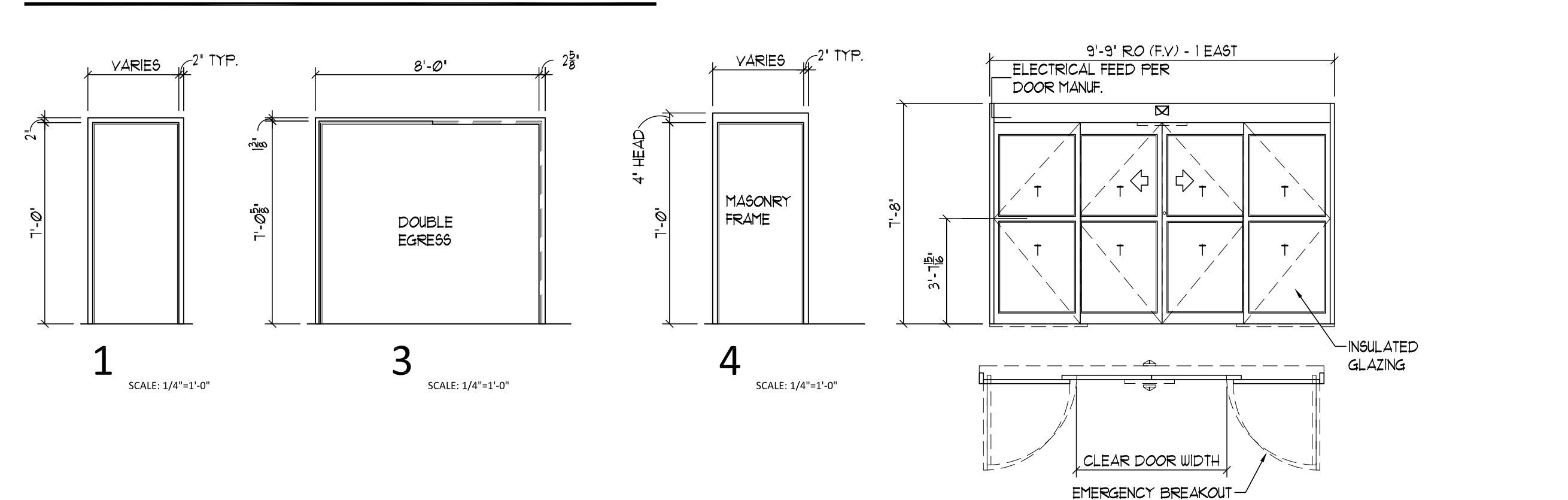
OPENING SCHEDULE													
NUMBER	LABEL (MIN)	OPENING INFORMATION			DOOR SIZE/BORROWED LIGHT SIZE		FRAME		GLAZING	HDW SET	OPENING DETAILS		
		WxH	THICKNESS	ELEV.	MATL	ELEV.	MATL				HEAD	JAMB	SILL
IE1-A	--	3'-0" x 7'-0"	1 3/4"	A	SCW	I	HM	--	--	3E	03	02	--
IE1-B	--	3'-0" x 7'-0"	1 3/4"	A	SCW	I	HM	--	--	3E	03	02	--
IE2	--	3'-0" x 7'-0"	1 3/4"	A	SCW	I	HM	--	--	1L	03	02	--
IE3	--	3'-0" x 7'-0"	1 3/4"	A	SCW	I	HM	--	--	1L	03	02	--
IE4	--	3'-0" x 7'-0"	1 3/4"	A	SCW	I	HM	--	--	1L	03	02	--
IE5	--	3'-0" x 7'-0"	1 3/4"	A	SCW	I	HM	--	--	2G	03	02	--
IE6	--	3'-0" x 7'-0"	1 3/4"	A	SCW	I	HM	--	--	1L	03	02	--
IE6A-A	--	3'-0" x 7'-0"	1 3/4"	A	SCW	I	HM	--	--	4B	03	02	--
IE6A-B	--	3'-0" x 7'-0"	1 3/4"	A	SCW	I	HM	--	--	4B	03	02	--
IE7	--	3'-0" x 7'-0"	1 3/4"	A	SCW	I	HM	--	--	1L	03	02	--
IE8	--	3'-0" x 7'-0"	1 3/4"	A	SCW	I	HM	--	--	1L	03	02	--
IE9	--	3'-0" x 7'-0"	1 3/4"	A	SCW	I	HM	--	--	1L	03	02	--
IE10	--	3'-0" x 7'-0"	1 3/4"	A	SCW	I	HM	--	--	1L	03	02	--
IE11	--	3'-0" x 7'-0"	1 3/4"	A	SCW	I	HM	--	--	4P	03	02	--
IE12	45 MIN	3'-0" x 7'-0"	1 3/4"	A	SCW	I	HM	--	--	9H-3C	03	02	CII
IE13	--	3'-0" x 7'-0"	1 3/4"	A	SCW	I	HM	--	--	1L	03	02	--
IE14	--	3'-0" x 7'-0"	1 3/4"	A	SCW	I	HM	--	--	1L	03	02	--
IE15	--	3'-0" x 7'-0"	1 3/4"	A	SCW	I	HM	--	--	1L	03	02	--
IE16	--	3'-0" x 7'-0"	1 3/4"	A	SCW	I	HM	--	--	1L	03	02	--
IE17	--	3'-0" x 7'-0"	1 3/4"	A	SCW	I	HM	--	--	1L	03	02	--
IE18	--	3'-0" x 7'-0"	1 3/4"	A	SCW	I	HM	--	--	4E	03	02	--
IE19	--	3'-0" x 7'-0"	1 3/4"	A	SCW	I	HM	--	--	3E	03	02	--
IE20	45 MIN	3'-0" x 7'-0"	1 3/4"	A	SCW	I	HM	--	--	5D	03	02	CII
IE21	--	3'-0" x 7'-0"	1 3/4"	A	SCW	I	HM	--	--	1L	03	02	--
IE22	45 MIN	3'-0" x 7'-0"	1 3/4"	A	SCW	I	HM	--	--	9H-3C	03	02	CII
IE23	--	3'-0" x 7'-0"	1 3/4"	A	SCW	I	HM	--	--	1L	03	02	--
IE24	--	3'-0" x 7'-0"	1 3/4"	A	SCW	I	HM	--	--	2G	03	02	--
IE25	--	3'-0" x 7'-0"	1 3/4"	A	SCW	I	HM	--	--	1L	03	02	--
IE26-A	--	3'-6" x 7'-0"	1 3/4"	A	SCW	I	HM	--	--	2G	03	02	--
IE26-B	--	3'-6" x 7'-0"	1 3/4"	A	SCW	I	HM	--	--	2G	03	02	--
IE27	--	3'-0" x 7'-0"	1 3/4"	A	SCW	I	HM	--	--	3E	03	02	--
IE28	--	3'-0" x 7'-0"	1 3/4"	A	SCW	I	HM	--	--	3E	03	02	--
IE29	--	3'-0" x 7'-0"	1 3/4"	A	SCW	I	HM	--	--	3E	03	02	--
IE30	--	3'-0" x 7'-0"	1 3/4"	A	SCW	I	HM	--	--	1L	03	02	--
IE61	--	3'-0" x 7'-0"	1 3/4"	A	SCW	I	HM	--	--	4B	03	02	--
IE68	--	3'-0" x 7'-0"	1 3/4"	A	SCW	I	HM	--	--	4B	03	02	--
300B	45 MIN	3'-6" x 7'-0"	1 3/4"	A	SCW	4	HM	--	--	E2	07	06	--
300C	--	3'-0" x 7'-0"	1 3/4"	A	SCW	I	HM	--	--	5D	03	02	--
300E	--	3'-6" x 7'-0"	1 3/4"	A	SCW	I	HM	--	--	8E	03	02	--
300F	--	3'-0" x 7'-0"	1 3/4"	A	SCW	I	HM	--	--	8E	03	02	--
300G	--	3'-6" x 7'-0"	1 3/4"	A	SCW	I	HM	--	--	8E	03	02	--
300A-A	--	9'-0" x 7'-0"	--	MFGR	AL	0	AL	T	--	09	08	--	FV, RO, ASL
300A-B	--	9'-0" x 7'-0"	--	MFGR	AL	0	AL	T	--	09	08	--	FV, RO, ASL

REFER TO PROJECT MANUAL/SPECIFICATIONS FOR HARDWARE SCHEDULES  
\*\* ALWAYS UNLOCKED FROM INSIDE. LOCKED FROM OUTSIDE AFTER HOURS. VERIFY FUNCTION WITH OWNER

DOOR ELEVATIONS:



FRAME ELEVATIONS:



GENERAL OPENING NOTES:

- A. ALL FRAMES ARE TO BE WELDED CONSTRUCTION.
- B. PROVIDE DOUBLE STRUCTURAL STUDS AT JAMBS WITH OPENINGS GREATER THAN 4'-0".
- C. REFER TO THE PARTITION TYPES FOR ADDITIONAL INFORMATION.
- D. PROVIDE FULL HEIGHT STRUCTURAL STUDS TO THE STRUCTURAL DECK ABOVE AT ALL FRAMED OPENINGS.
- E. PROVIDE SOUND ATTENUATION BATT INSULATION WHERE INDICATED ON THE FLOOR PLANS.
- F. ALL FRAMES ARE TO BE GROUDED SOLID.
- G. ALL FRAMES ARE TO BE SPOT GROUDED AT THE JAMB ANCHORS.
- H. PROVIDE MINIMUM THREE JAMB ANCHORS PER JAMB SIDE.
- I. ALL RATED DOORS SHALL INCLUDE RATED HARDWARE AND FRAMES.
- J. PROVIDE DOOR ARMOR ON PUSH SIDE AS INDICATED ON SCHEDULE. ARMOR SHALL BE ADHERED WITH SELF-ADHESIVE.
- K. MAGNETIC HOLD OPENS SHALL BE TIED INTO FIRE ALARM SYSTEM AND SUPPLIED BY VENDOR.
- L. ACCESS CONTROL AND POWER SUPPLY SHALL BE PROVIDED BY VENDOR.
- M. PROVIDE SILENCERS FOR ALL DOOR FRAMES.
- N. ALL DOORS WITH MANUAL FLUSH BOLTS SHALL HAVE DUST PROOF STRIKE.
- O. REFER TO ARCHITECTURAL FLOOR PLANS FOR LOCATIONS OF CARD READERS AND PUSH PADS THAT SHALL BE PROVIDED FOR AUTOMATIC DOORS.

COMMON REMARKS FOR THE OPENING SCHEDULE:

- ACCORDION DOOR
- ACOUSTICAL PANEL
- AUTOMATIC
- BI-FOLD
- BI-PARTING
- BORROWED LIGHT
- BUTT GLAZED
- CARD READER
- COUNTER SHUTTER
- DOUBLE DOORS
- DOUBLE EGRESS DOORS
- DUTCH DOORS
- EMERGENCY STRIKE
- ENTRANCE SLIDER
- EXISTING TO BE RELOCATED
- EXISTING TO REMAIN
- FIRE CURTAIN
- FIRE SHUTTER
- FIXED PANEL
- HOLD OPEN(S)
- ICU SLIDER
- INSULATED
- KEY PAD
- LEAD LINED
- MOTORIZED
- OVERHEAD COILING DOOR
- OVERHEAD SECTIONAL DOOR
- OVERHEAD SHUTTER
- PAINT
- PASS-THRU
- PUSH PAD
- RF SHIELDING
- REVOLVING DOOR
- SCREEN
- SCRELIGHT
- SLIDING GLASS
- SLOPED
- STORMFRONT
- TIE INTO FIRE ALARM SYSTEM
- TIE INTO SECURITY SYSTEM
- TRIPLE PANEL
- WON DOOR

OPENING SCHEDULE LEGEND:

- NOTE: NOT ALL HARDWARE LISTED IN THE LEGEND IS UTILIZED IN THIS PROJECT.
- DOOR: AL ALUMINUM, ASL AUTO-SLIDER, GL GLAZING REFER TO GLAZING, LG LAMINATED GLASS, HM HOLLOW METAL, PAINT, SCW SOLID CORE WOOD, RATED OR NON-RATED, IG GALVANIZED, G GALVANIZED, FRAME: AL ALUMINUM, HM HOLLOW METAL, GLAZING: C CLEAR GLASS, E ETCHED/FROSTED, F FIRE RATED, P PLASTIC (SUICIDE RESISTANT), R ARCHITECTURAL RESIN, S SPANDREL, T TEMPERED GLASS, LG LAMINATED GLASS, HINGES: H1 BALL BEARING BUTT HINGES, H2 CONTINUOUS HINGES, H3 ELECTRIC CONTINUOUS HINGES, H4 CONTINUOUS GEARED HINGES, H5 CONCEALED HINGE, H6 PIVOTS, H7 SWING CLEAR OFFSET HINGE, H8 DOUBLE ACTING SPRING PIVOT, LATCH: L1 PASSAGE, L2 EXIT DEVICE, L3 PRIVACY, L4 HOSPITAL FLUSH/FULL, L5 INACTIVE TRIM, L6 OFFICE/ENTRANCE, L7 FLUSH/FULL, L8 CLASSROOM, L9 STOREROOM, L10 HOTEL/OTEL, L11 MANUAL FLUSH BOLTS, L12 AUTOMATIC FLUSH BOLTS, L13 BOTTOM FLUSH BOLT, L14 DEADBOLT, L15 CYLINDER ONLY, L16 ELECTRONIC EXIT DEVICE, L17 ELECTRONIC LOCKSET, L18 ANTI-LIGATURE, MISC ABBREVIATIONS: ETR EXISTING TO REMAIN, N/A NOT APPLICABLE, FV FIELD VERIFY (GO TO FIELD VERIFY PRIOR TO FABRICATION), RO ROUGH OPENING, REMARKS: 1. ANTI LIGATURE HARDWARES, 2. INSULATED AND GALVANIZED DOOR AND FRAME, 3. ADD COAT HOOK, 4. HARDWARE BY DOOR MANUFACTURER, 5. ADD SMOKE & DRAFT CONTROL KIT, 6. NON-REMOVABLE PIN, 7. GALVANIZED FRAME, 8. PROVIDE ONE LATCH FOR BOTTOM LEAF, 9. PROVIDE ONE LATCH FOR TOP LEAF, 10. PROVIDE DOOR PROTECTION ON BOTH SIDES, 11. KEYED BOTH SIDES, 12. PROVIDE INTEGRAL BLINDS IN VISION PANEL, WEATHER STRIPPING, THRESHOLD, ASYMMETRIC, AUTOMATIC DOOR BOTTOM, PERIMETER GASKETING, DRAIN STRIP, SUEEP, SEAL: S1 WEATHER STRIPPING, S2 THRESHOLD, S3 ASYMMETRIC, S4 AUTOMATIC DOOR BOTTOM, S5 PERIMETER GASKETING, S6 DRAIN STRIP, S7 SUEEP, PROTECTION: P1 KICK PLATE, P2 DOOR ARMOR, P3 MOP PLATE, P4 DOOR EDGE PROTECTION, CONTROL: C1 CLOSER STANDARD, C2 CLOSER W/ MAGNETIC HOLD OPENS, C3 CLOSER W/ DELAYED ACTION, C4 WALL STOP, C5 FLOOR STOP, C6 OVERHEAD STOP, C7 MAGNETIC LOCK, C8 ELECTRIC STRIKE, C9 AUTOMATIC DOOR OPERATOR, C10 DOOR OPERATOR FLUSH PADS, C11 ACCESS CONTROL CARD READER, C12 COORDINATOR, C13 CORDED STRIKE AND RESCUE STOP, C14 CLOSER CONCEALED, C15 CLOSER W/ INTEGRAL STOP, C16 ROLLER BUMPER, C17 DELAYED EGRESS SYSTEM

ADDENDUM: Clarification to window shutter 04/16/13	CONSULTANTS: The Estopinal Group 820 Jordan Street, Suite 507 Shreveport, LA 71101 tel: 318.424.3700 fax: 318.424.3764	PROJECT MANAGERS AND ENGINEERS: TNF A VETERAN OWNED COMPANY 3 EXECUTIVE COURT, UNIT 4 SOUTH BARRINGTON, IL 60010	Drawing Title OPENING SCHEDULE - I EAST Approved: Project Director	Project Title RENOVATE ED & PRIMARY CARE Phase 2 Location SHREVEPORT VAMC 510 EAST STONER AVE Date 01/09/13 Checked JAH Drawn CSH	Project Number 667-10-100 Building Number 1E Drawing Number A14.E1 Dwg. 40 of 112	Office of Construction and Facilities Management Department of Veterans Affairs
---	---	---	--	--	---	--