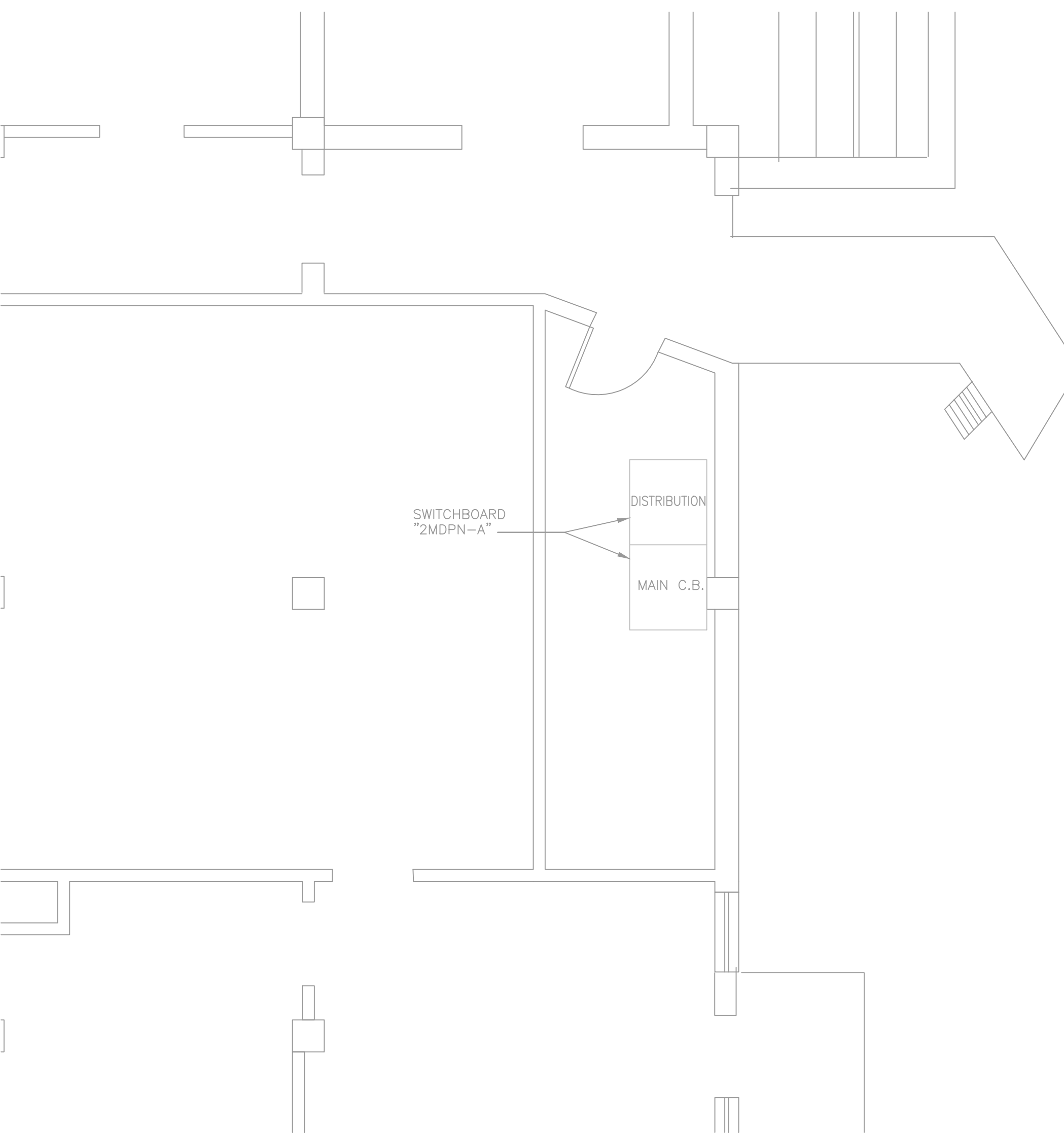
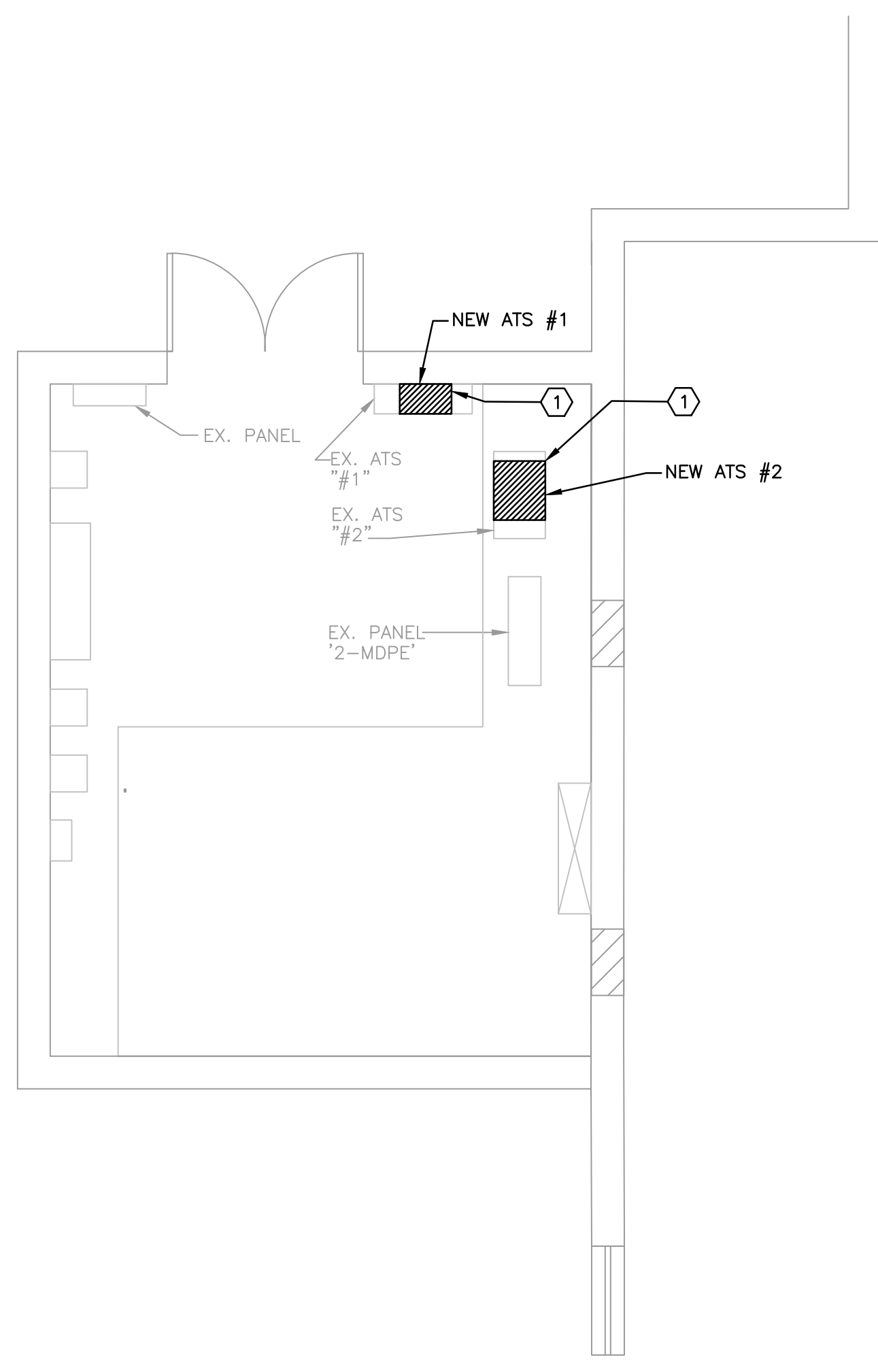


three inches = one foot
one and one half inches = one foot
one inch = one foot
three quarters inch = one foot
one half inch = one foot
three eighths inch = one foot
one quarter inch = one foot
one eighth inch = one foot

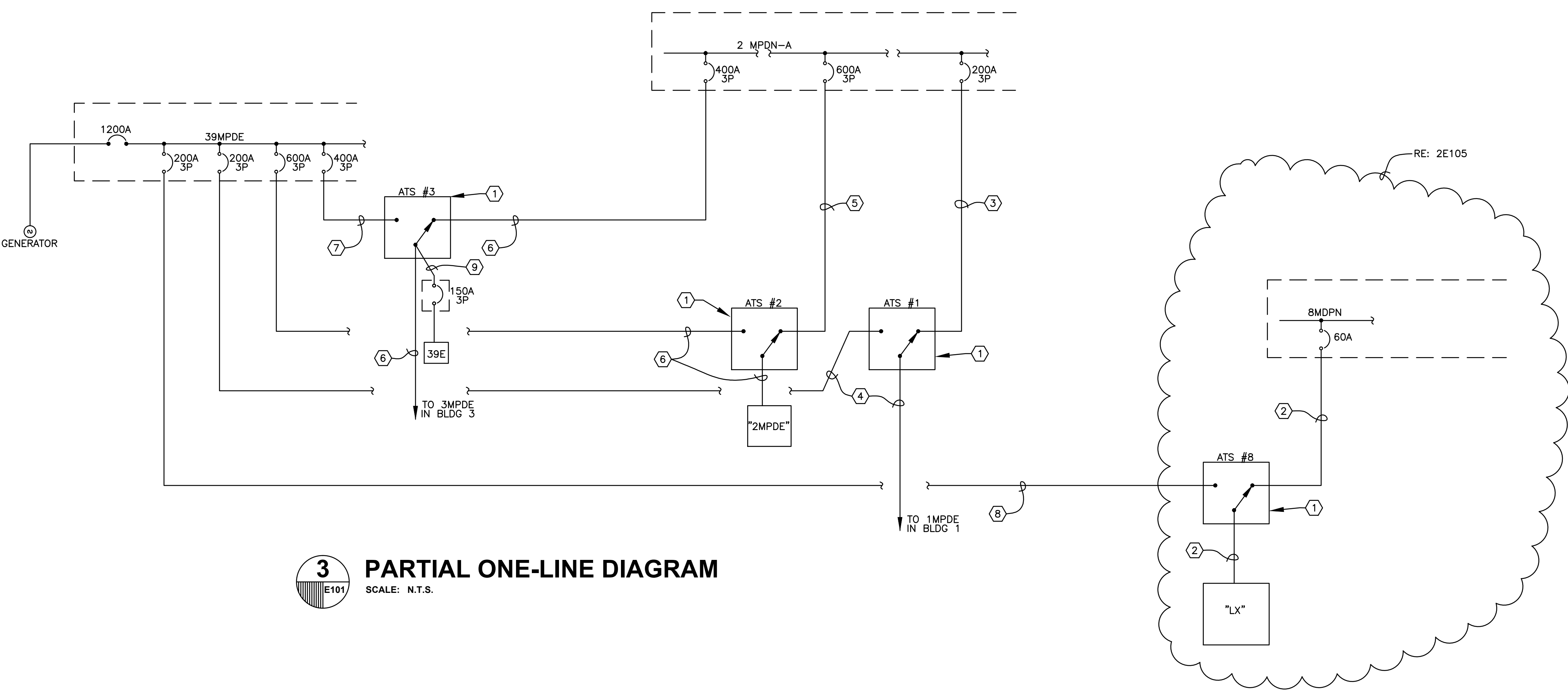


1 BUILDING 2 FIRST FLOOR PLAN
SCALE: 1/4" = 1'-0"

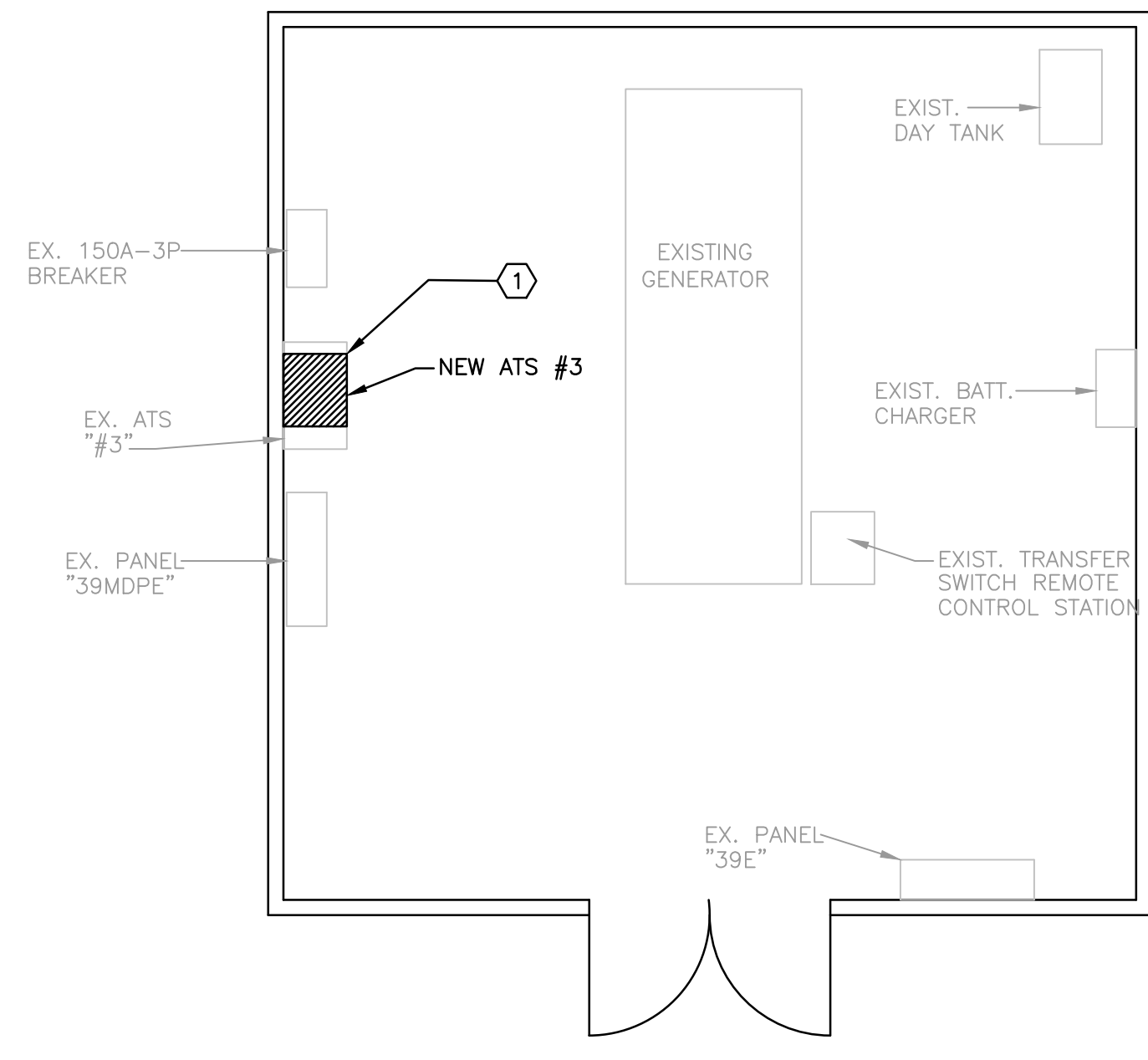
- ELECTRIC NOTES**
- ① REPLACE EXISTING TRANSFER SWITCH WITH NEW TRANSFER SWITCH & RECONNECT TO EXISTING FEEDERS. SEE SHEET E100 FOR TRANSFER SWITCH SCHEDULE. ALSO RECONNECT GENERATOR START CONDUCTORS, REMOTE CONTROL & ANNUNCIATION CONDUCTORS, & ELEVATOR CONTROL CIRCUIT CONDUCTORS (WHERE APPLICABLE)
 - ② EXISTING 4 #6 & 1 #8 GRND - 1" C. TO REMAIN
 - ③ EXISTING 4 #3/0 & 1 #6 GRND - 2" C. TO REMAIN
 - ④ EXISTING 8 #250MCM & 2 #2 GRND IN 2 - 3" C. TO REMAIN
 - ⑤ EXISTING 8 #350MCM & 2 #1 GRND IN 2 - 3" C. TO REMAIN
 - ⑥ EXISTING 8 #500MCM & 2 #1/0 GRND IN 2 - 3 1/2" C. TO REMAIN
 - ⑦ EXISTING 4 #500MCM & 1 #3 GRND - 3 1/2" C. TO REMAIN
 - ⑧ EXISTING 3 #250MCM, 1 #3/0, & 1 #4 GRND - 3 1/2" C TO REMAIN
 - ⑨ EXISTING 4 #1/0 & 1 #6 GRND - 2" C. TO REMAIN



2 BUILDING 2 BASEMENT PLAN
SCALE: 1/4" = 1'-0"



3 PARTIAL ONE-LINE DIAGRAM
SCALE: N.T.S.



4 BUILDING 39 PLAN
SCALE: 1/4" = 1'-0"

| | | | | | | | | | | | | | | | | |
|--|--|--|--|--|--|--|--|--|--|--|---|---|---|---|---|---|
| <div>Revisions:</div> <table><tr><td> </td><td> </td></tr><tr><td> </td><td> </td></tr><tr><td> </td><td> </td></tr><tr><td> </td><td> </td></tr><tr><td> </td><td> </td></tr></table> | | | | | | | | | | | <div>CONSULTANTS:</div> <div><div>E E Consultants, Inc. PROFESSIONAL ELECTRICAL ENGINEERS 301 Jackson St. Suite 204 Alexandria, LA 71301 PH: (318) 445-8870 FAX: (318) 445-4350</div><div><div>Professional Seal:</div><div></div></div></div> | <div>ARCHITECT/ENGINEERS:</div> <div>12021-CAL</div> <div><div></div><div>Barron Heinberg & Brocato Architecture, Engineering Planning, Interior Design 1015 Wisteria Street Alexandria, Louisiana 71301 Tel: 318-443-7291 Fax: 318-487-0678</div></div> | <div>Drawing Title</div> <div>BUILDING 2 & 39 PARTIAL PLANS & ONE-LINE</div> <div>Approved: Project Director</div> | <div>Project Title</div> <div>A&E DESIGN REPLACEMENT OF TRANSFER SWITCH FINAL SUBMITTAL</div> <div>Location</div> <div>VAMC; ALEXANDRIA, LA.</div> <div>Date</div> <div>JULY 13, 2012</div> <div>Checked</div> <div>RJD</div> <div>Drawn</div> <div>EEC</div> | <div>Project Number</div> <div>502-11-111</div> <div>Building Number</div> <div>2 & 39</div> <div>Drawing Number</div> <div>E101</div> <div>Dwg. 3 of 7</div> | <div>Office of Facilities Management</div> <div> DEPARTMENT of Veterans Affairs</div> |
| | | | | | | | | | | | | | | | | |
| | | | | | | | | | | | | | | | | |
| | | | | | | | | | | | | | | | | |
| | | | | | | | | | | | | | | | | |
| | | | | | | | | | | | | | | | | |
| | | | | | | | | | | | | | | | | |
| | | | | | | | | | | | | | | | | |
| | | | | | | | | | | | | | | | | |
| | | | | | | | | | | | | | | | | |